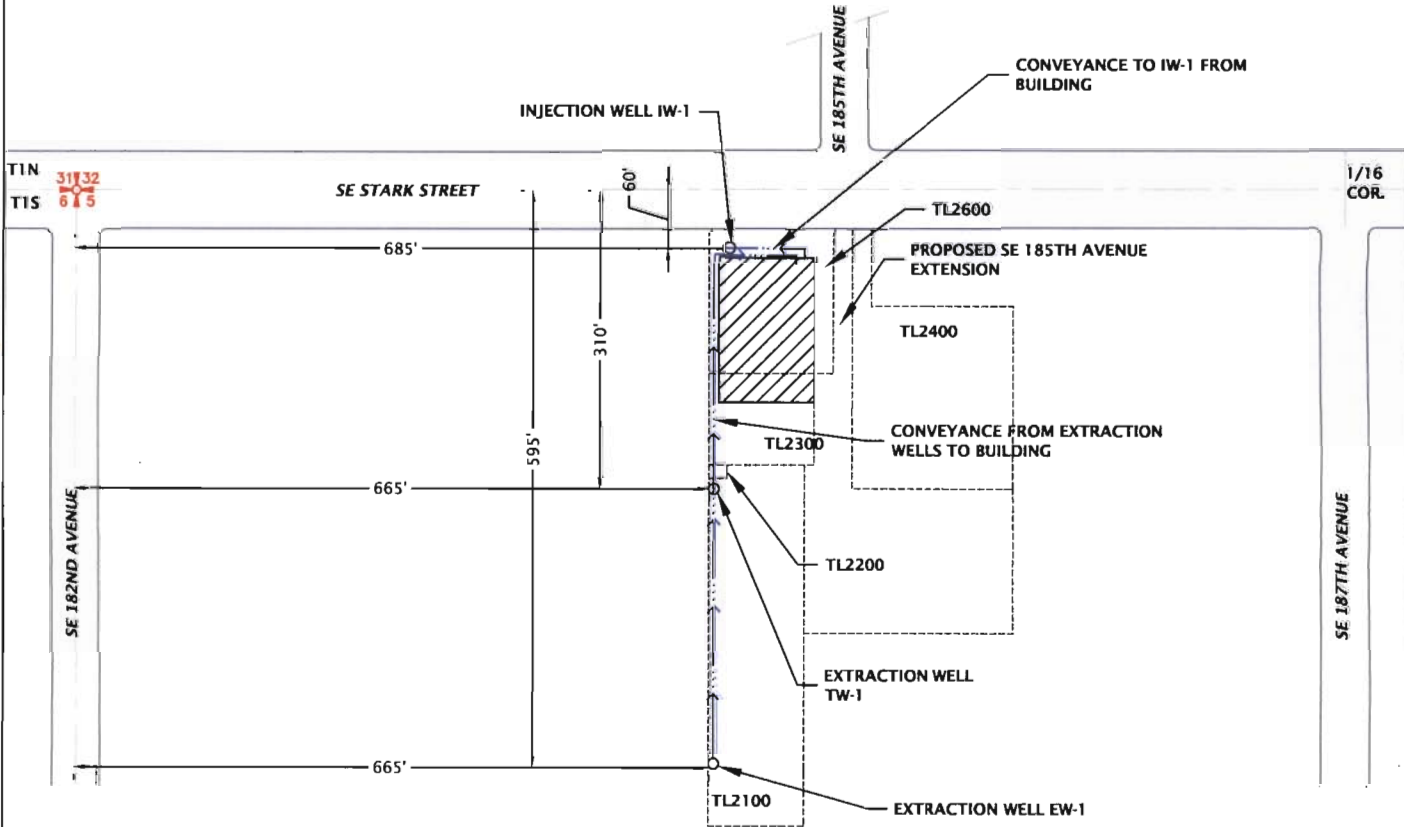


APPLICATION MAP  
 MULTNOMAH COUNTY FACILITIES  
 AND  
 PROPERTY MANAGEMENT  
 NW 1/4, NW 1/4  
 SEC 5, T1S, R3E, W.M.



PLACE OF USE (BUILDING AIR CONDITIONING, ACREAGE NOT APPLICABLE)

APPLICATION NUMBER G-17467  
 PERMIT NUMBER \_\_\_\_\_

THE PURPOSE OF THIS MAP IS TO IDENTIFY THE LOCATION OF THE WATER RIGHT. IT IS NOT INTENDED TO PROVIDE INFORMATION RELATIVE TO THE LOCATION OF PROPERTY OWNERSHIP BOUNDARIES.

RECEIVED

JUN 3 2011

WATER RESOURCES DEPT  
 SALEM, OREGON



Printed By: aday | Print Date: 5/10/2011 3:15:25 PM  
 File Name: J:\E\LRS\LRS-10\LRS-10-02\Figures\CAD\LRS-10-02-AM.dwg | Layout: FIGURE 1

**GEODESIGN** INC  
 15575 SW Sequoia Parkway - Suite 100  
 Portland OR 97224  
 Off 503.968.8787 Fax 503.968.3068

LRS-10-02

FEBRUARY 2011

MULTNOMAH COUNTY FACILITIES AND PROPERTY  
 MANAGEMENT APPLICATION MAP

PROPOSED EAST MULTNOMAH COUNTY COURTHOUSE  
 GRESHAM, OR

FIGURE 1