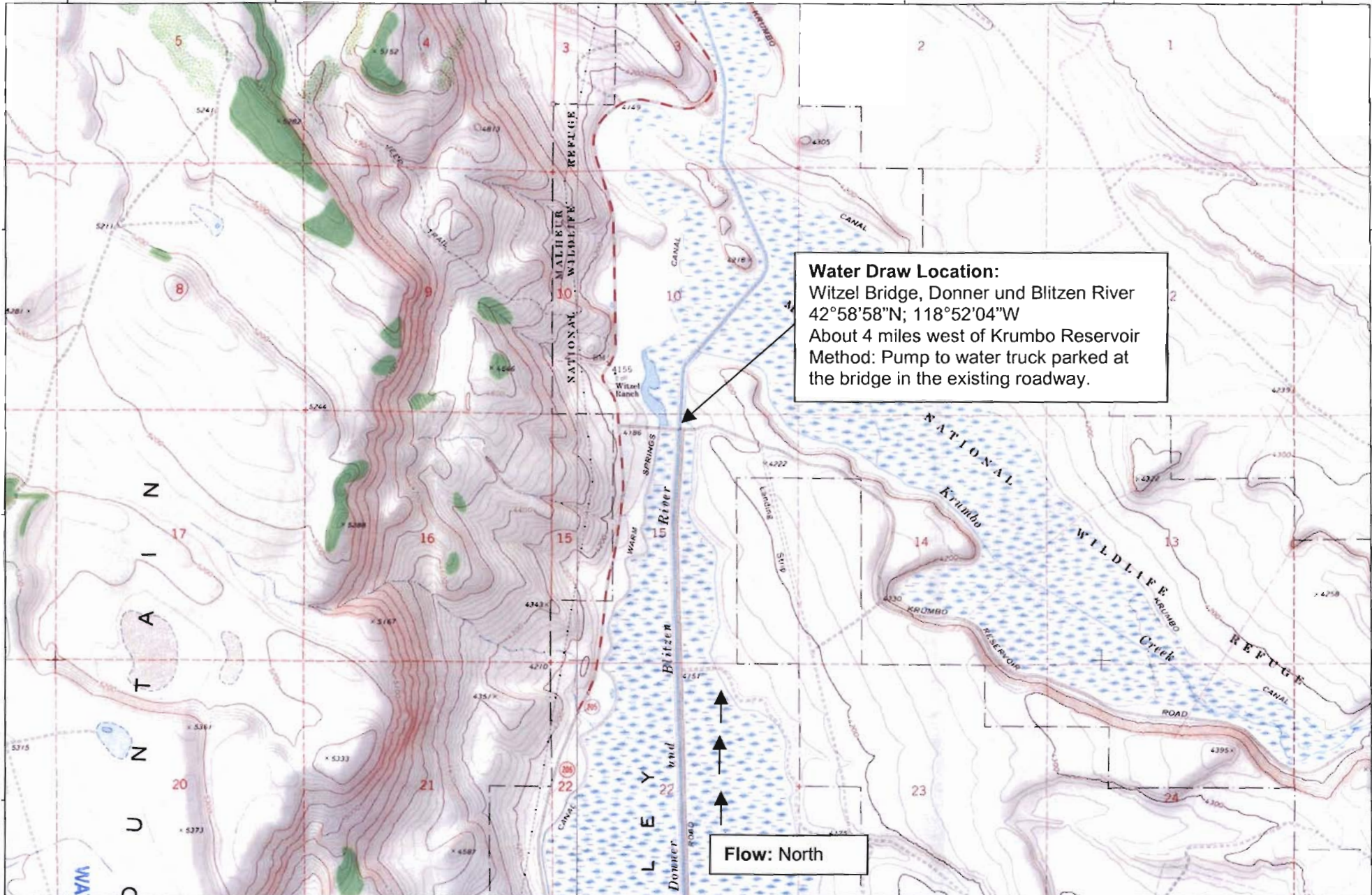


118°55'00" W 118°54'00" W 118°53'00" W 118°52'00" W 118°51'00" W 118°50'00" W WGS84 118°49'00" W

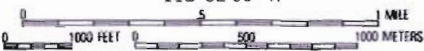
42°59'00" N
42°58'00" N
42°57'00" N

42°59'00" N
42°58'00" N
42°57'00" N



Water Draw Location:
Witzel Bridge, Donner und Blitzen River
42°58'58"N; 118°52'04"W
About 4 miles west of Krumbo Reservoir
Method: Pump to water truck parked at
the bridge in the existing roadway.

Flow: North



Map created with TOPO! ©2003 National Geographic (www.nationalgeographic.com/topo)

POB 30S 31E SEC 15 NW, NE
HARNEY CO. WORTH 10

RECEIVED
APR 12 2006
WATER RESOURCES DE
SALEM, OREGON

TN* /MN
16°