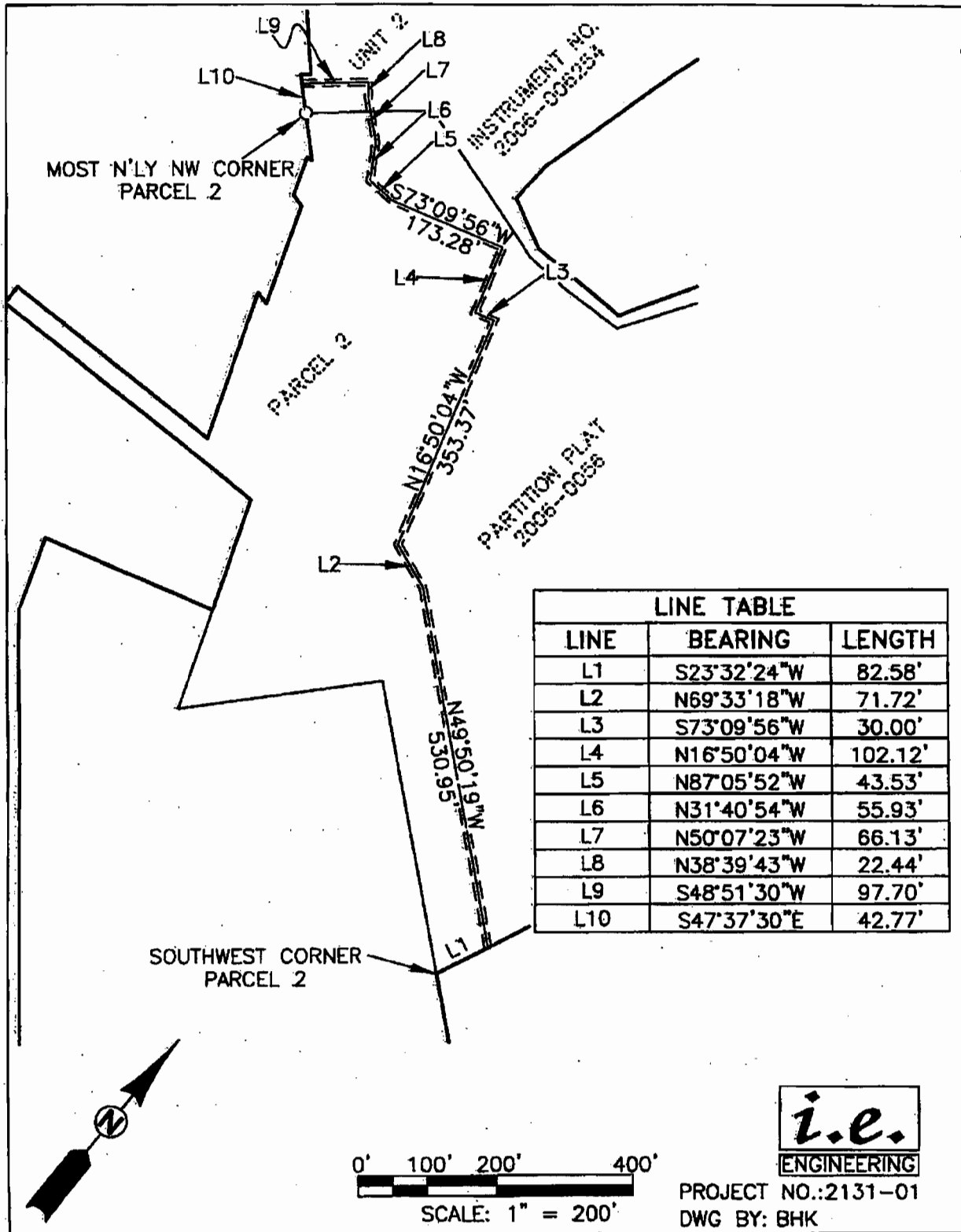


EXHIBIT "B"



S-87731



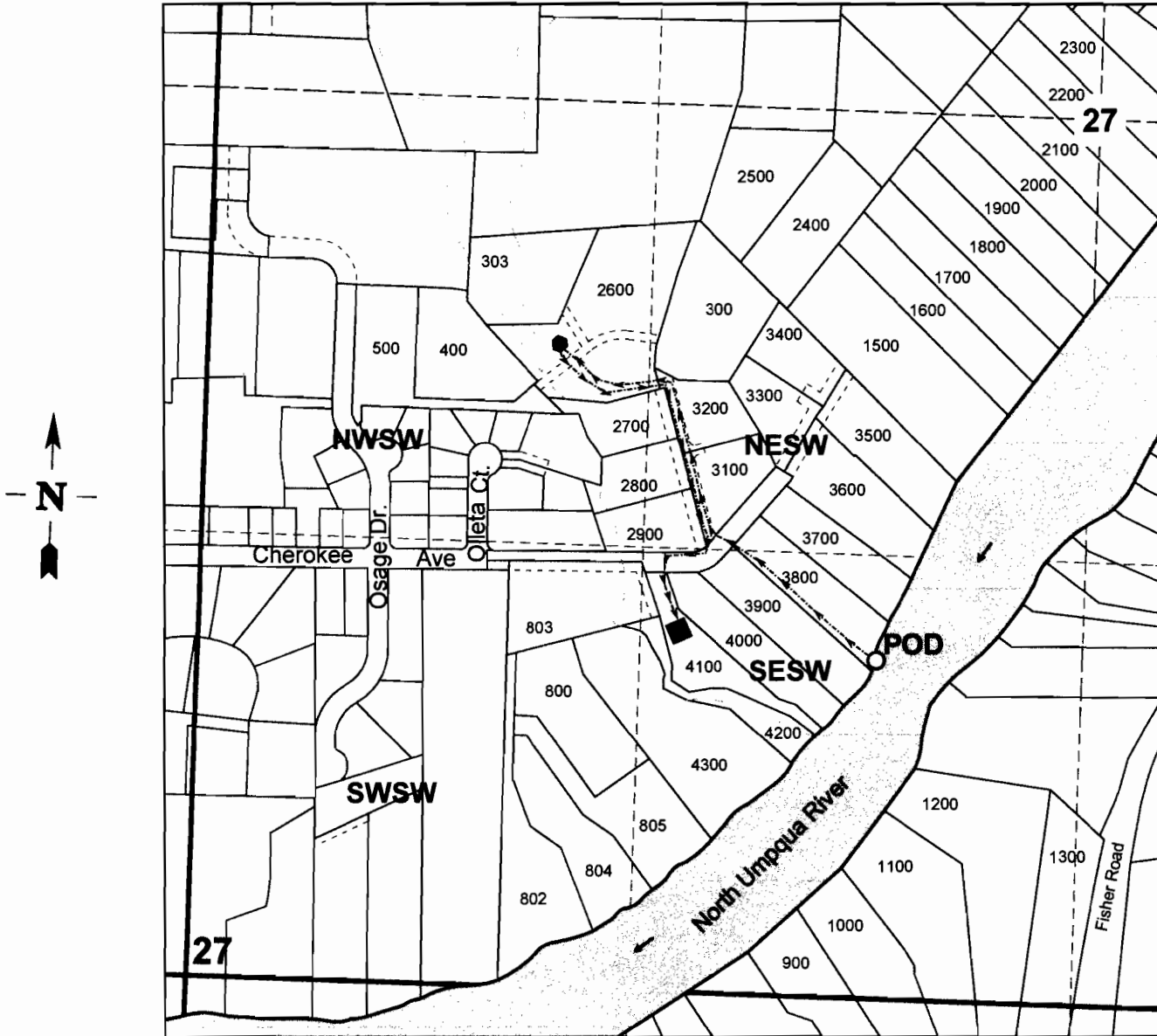
PROJECT NO.: 2131-01  
DWG BY: BHK

RECEIVED

JUN 23 2011

WATER RESOURCES DEPT  
SALEM, OREGON

SEC.27 T.26S. R.6W. W.M.  
 DOUGLAS COUNTY  
 Scale 1" = 500'  
 Bothwell Application Map



POD is 1640' south and 635' west from the center of Section 27.

**RECEIVED**

JUN 23 2011

WATER RESOURCES DEPT  
 SALEM, OREGON

S-8773)