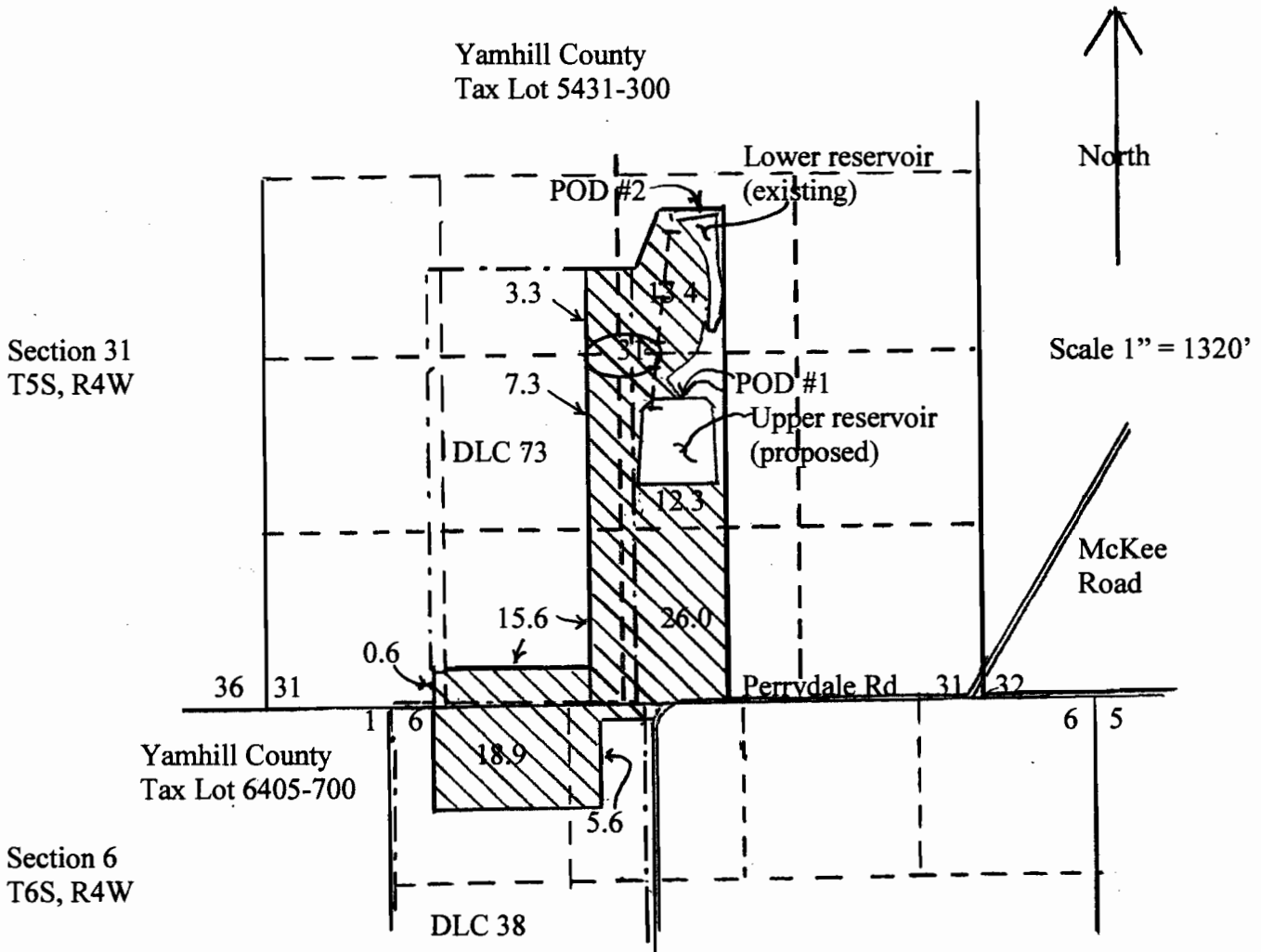


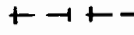


ROBERT L. and LEANN R. MCKEE
 SURFACE WATER RIGHT, GROUND WATER RIGHT,
 and RESERVOIR APPLICATION MAP



POD #1 for upper reservoir is located 400' east and 350' south from the center of Section 31, T5S, R4W

POD #2 for lower reservoir is located 550' east and 1000' north from the center of Section 31, T5S, R4W (existing reservoir P-77020)

-  Area (103.4 acres) to be irrigated
-  - - - DLC boundary
-  + - + - Pipeline

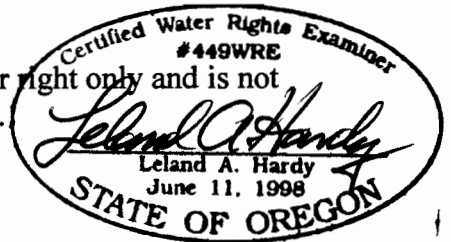
RECEIVED

JUL 06 2011

WATER RESOURCES DEPT
 SALEM, OREGON

Note: The 1/4 1/4 lines have been projected using tax lot maps, government land survey maps, an aerial photograph and best professional judgment.

This map was prepared for the purpose of identifying the location of a water right only and is not intended to provide legal dimensions or location of property ownership lines.



RENEWAL DATE: 6/30/2013

OWRD Basic Web Mapping Application (beta)

Locate a place on the map ▶Use Advanced Map ▶Help ▶Links ▶

Zoom In Zoom Out Pan Full Extent Identify

OWRD Data

Base Data

Imagery

SWNW

Selected Point

Latitude: 45.095217 , Longitude: -123.234904
Oregon Lambert Coordinate: 606255.27, 1231116.22
Perform a peak discharge estimate at this point
This point is located in the following TRSQQ:

TRSQQ: 05.00S-04.00W-31-SWNW

County: Yamhill
Basin: Willamette
WM District: 16
WM Region: NW
Withdrawn Area:
WAB: SALT CR > S YAMHILL R - AT MOUTH (73562)
Priority WAB:
Rule 4D: Rules apply
Groundwater Restricted:
Scenic Water Way:
Division 33: LOWER COLUMBIA
Water Quality Limited: Yes
Water Rights: See Water Rights in this section (Platcard)
Well Logs: See Well Logs in this section

RECEIVED

JUL 06 2011

WATER RESOURCES DEPT
SALEM, OREGON

OWRD Basic Web Mapping Application (beta)

Zoom In Zoom Out Pan Full Extent Identify

- OWRD Data
 - Rule Boundaries
 - Scenic Waterwa
 - Withdrawn Area
 - Deschutes Mitig
 - GW restricted a
 - NMFS Rule 4D
 - Division 33
- Political Boundaries
- Water Availability
 - Priority WABS
 - Water Availabili
- Water Rights
 - Ground water
 - Surface water
 - Storage Water
- Surface water
- Base Data
- Imagery

Locate a place on the map ▶ Use Advanced Map ▶ Help ▶ Links ▶

Selected Point

Latitude: 45.095663 , Longitude: -123.231926
 Oregon Lambert Coordinate: 607029.19, 1231253.17
Perform a peak discharge estimate at this point
 This point is located in the following TRSQQ:

TRSQQ: 05.00S-04.00W-31-SENW

County: Yamhill
 Basin: Willamette
 WM District: 16
 WM Region: NW
 Withdrawn Area:
 WAB: SALT CR > S YAMHILL R - AT MOUTH (73562)
 Priority WAB:
 Rule 4D: Rules apply
 Groundwater Restricted:
 Scenic Water Way:
 Division 33: LOWER COLUMBIA
 Water Quality Limited: Yes
 Water Rights: See Water Rights in this section (Platcard)
 Well Logs: See Well Logs in this section

RECEIVED
 JUL 06 2011
 WATER RESOURCES DEPT
 SALEM, OREGON

OWRD Basic Web Mapping Application (beta)

Zoom In Zoom Out Pan Full Extent Identify

Locate a place on the map ▶ Use Advanced Map ▶ Help ▶ Links ▶

Selected Point

Latitude: 45.092362 , Longitude: -123.230039
Oregon Lambert Coordinate: 607476.25, 1230034.35
Perform a peak discharge estimate at this point
This point is located in the following TRSQQ:

TRSQQ: 05.00S-04.00W-31-NESW

County: Yamhill
Basin: Willamette
WM District: 16
WM Region: NW
Withdrawn Area:
WAB: SALT CR > S YAMHILL R - AT MOUTH (73562)
Priority WAB:
Rule 4D: Rules apply
Groundwater Restricted:
Scenic Water Way:
Division 33: LOWER COLUMBIA
Water Quality Limited:
Water Rights: [See Water Rights in this section \(Platcard\)](#)
Well Logs: [See Well Logs in this section](#)

OWRD Data

- Rule Boundaries
 - Scenic Waterwa
 - Withdrawn Area
 - Deschutes Mitig
 - GW restricted a
 - NMFS Rule 4D
 - Division 33
- Political Boundaries
- Water Availability
 - Priority WABS
 - Water Availabili
- Water Rights
 - Ground water
 - Surface water
 - Storage Water
- Surface water
- Base Data
- Imagery

RECEIVED
JUL 06 2011
WATER RESOURCES DEPT
SALEM, OREGON

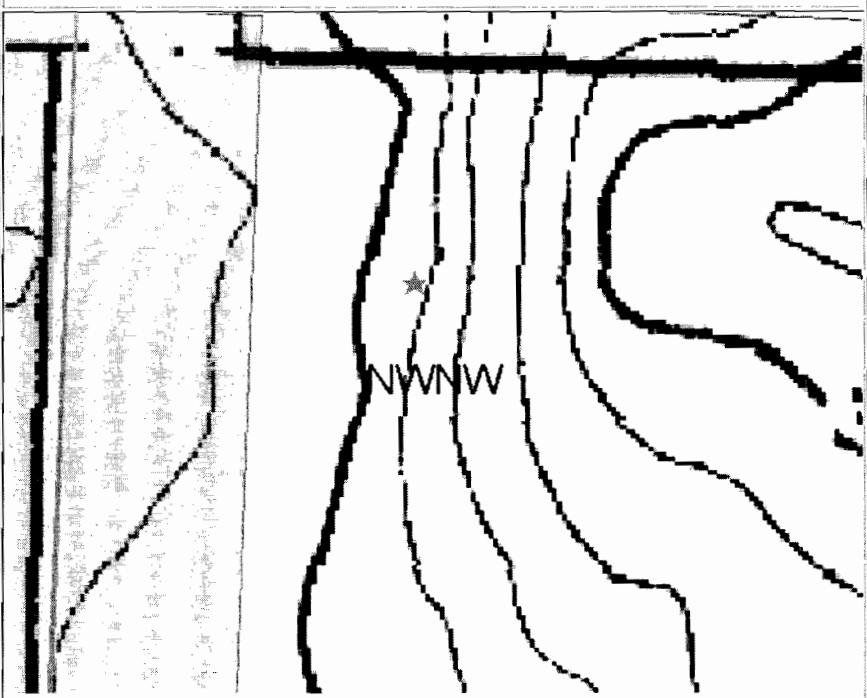
OWRD Basic Web Mapping Application (beta)

Locate a place on the map ▶ Use Advanced Map ▶ Help ▶ Links ▶

Zoom In Zoom Out Pan Full Extent Identify

OWRD Data

- Rule Boundaries
 - Scenic Waterwa
 - Withdrawn Area
 - Deschutes Mitig
 - GW restricted a
 - NMFS Rule 4D
 - Division 33
- Political Boundaries
- Water Availability
 - Priority WABS
 - Water Availabili
- Water Rights
 - Ground water
 - Surface water
 - Storage Water
- Surface water
- Base Data
- Imagery



Selected Point

Latitude: 45.085080 , Longitude: -123.232182
Oregon Lambert Coordinate: 606834.81, 1227399.50
[Perform a peak discharge estimate at this point](#)
This point is located in the following TRSQQ:

TRSQQ: 06.00S-04.00W-06-NWNW

County: Yamhill
Basin: Willamette
WM District: 16
WM Region: NW
Withdrawn Area:
WAB: [SALT CR > S YAMHILL R - AT MOUTH \(73562\)](#)
Priority WAB:
Rule 4D: Rules apply
Groundwater Restricted:
Scenic Water Way:
Division 33: LOWER COLUMBIA
Water Quality Limited:
Water Rights: [See Water Rights in this section \(Platcard\)](#)
Well Logs: [See Well Logs in this section](#)

RECEIVED

JUL 06 2011

WATER RESOURCES DEPT
SALEM, OREGON