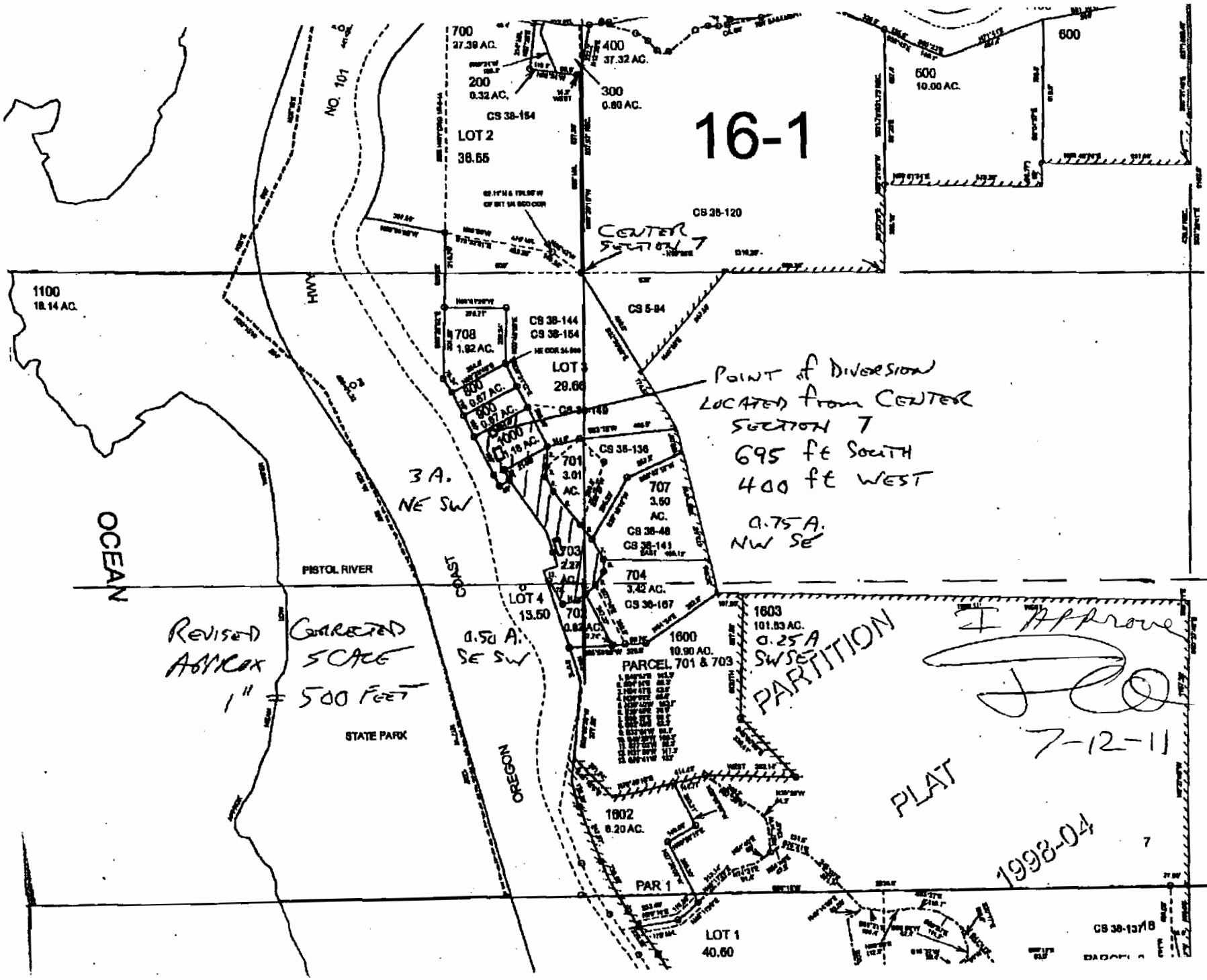


S-87737



POINT OF DIVERSION  
 LOCATED FROM CENTER  
 SECTION 7  
 695 FE SOUTH  
 400 FE WEST  
 Q.75 A.  
 NW SE

REVISED  
 ABSTRACT

CORRECTED  
 SCALE

1" = 500 FEET

STATE PARK

I Approve

JCO

7-12-11

PARCEL 701 & 703  
 PARTITION  
 PLAT

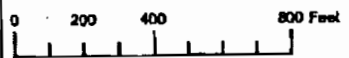
1998-04

SEE MAP 38S 14W

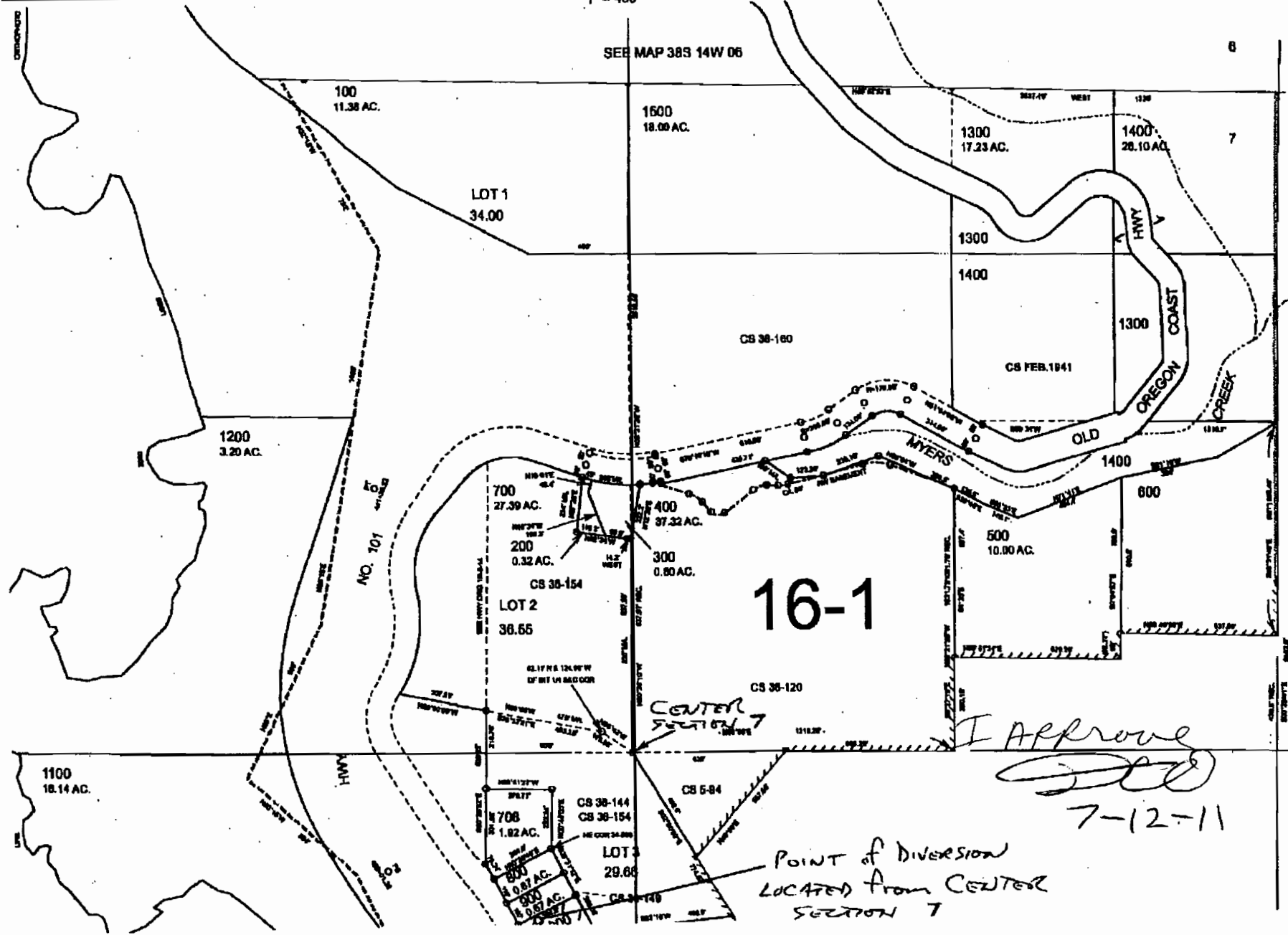
SECTION 07 T.38S. R.14W. W.M.

CURRY COUNTY

1" = 400'



15778-5

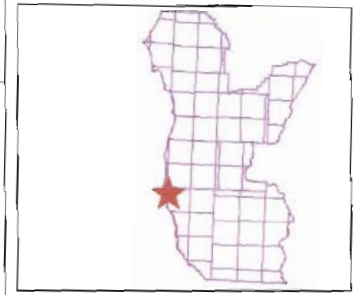
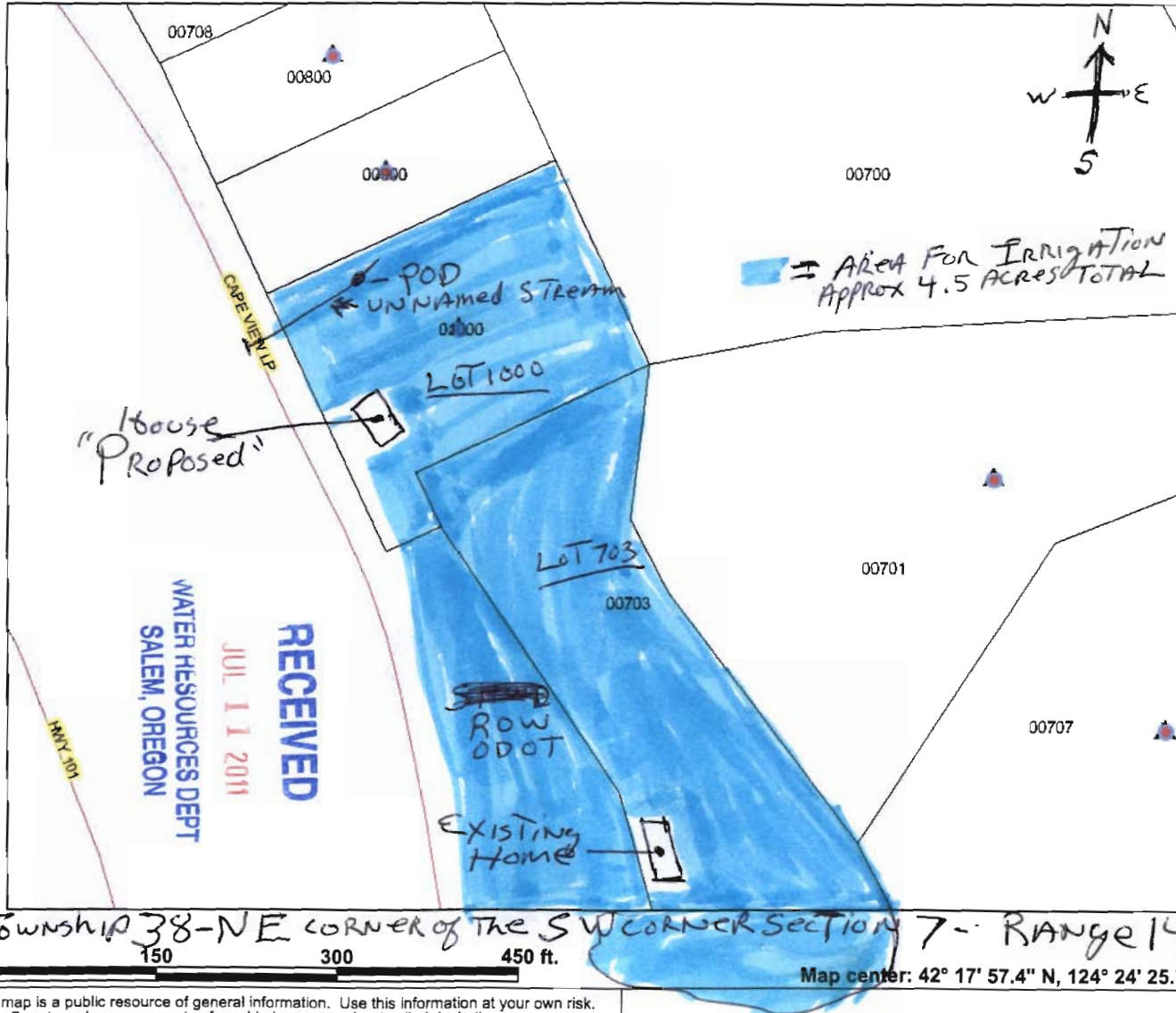


16-1

I Approve  
*[Signature]*  
7-12-11

POINT of DIVERSION  
LOCATED FROM CENTER  
SECTION 7

# Curry County Enterprise GIS



- ### Legend
- TOWNSHIPS
  - SITUS
  - TAX CODES
  - ▲ ASSESSMENT
  - ~ ROADS
  - PARCELS
  - ▭ CITY LIMITS
  - ▭ URBAN GROWTH BOUNDARY

Scale: 1:1,601

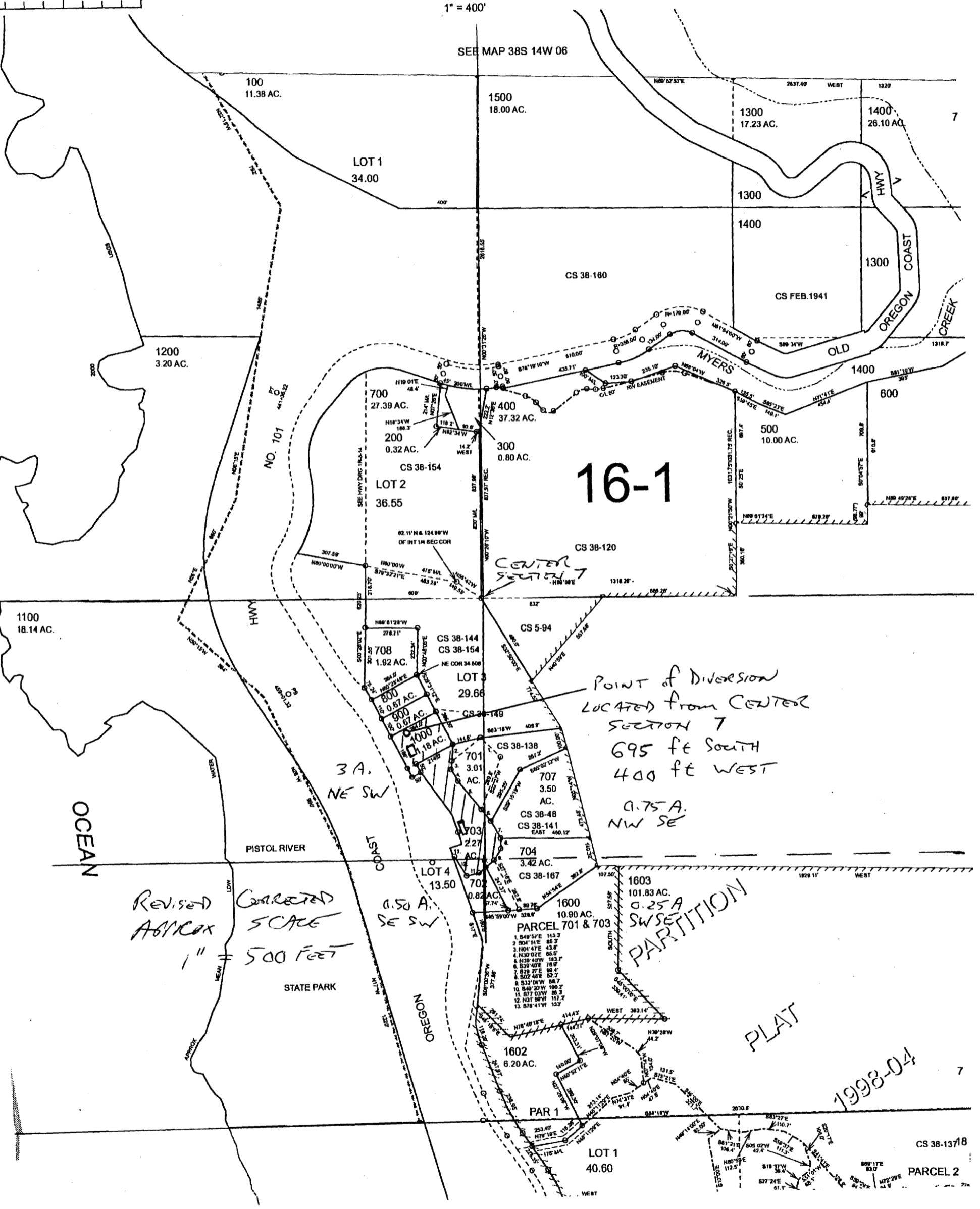
This map is a public resource of general information. Use this information at your own risk. Curry County makes no warranty of any kind, expressed or implied, including any warranty of merchantability, fitness for any particular purpose or any other matter.

13778-5

SECTION 07 T.38S. R.14W. W.M.  
CURRY COUNTY

1" = 400'

200 400 800 Feet



SEE MAP 38S 14W 06

100  
11.38 AC.

1500  
18.00 AC.

1300  
17.23 AC.

1400  
28.10 AC.

LOT 1  
34.00

CS 38-180

CS FEB.1941

1200  
3.20 AC.

700  
27.39 AC.

400  
37.32 AC.

200  
0.32 AC.

CS 38-154

16-1

LOT 2  
36.55

CENTER SECTION 7

CS 38-120

1100  
18.14 AC.

POINT OF DIVERSION  
LOCATED FROM CENTER  
SECTION 7  
695 FE SOUTH  
400 FE WEST  
0.75 A.  
NW SE

3 A.  
NE SW

OCEAN

PISTOL RIVER

Revised Corrected  
Approx SCALE  
1" = 500 FEET

LOT 3  
29.66

LOT 4  
13.50

0.50 A.  
SE SW

STATE PARK

OREGON  
COAST

PARCEL 701 & 703  
PARTITION PLAT

1998-04

PARCEL 701 & 703  
1. 54°57'E 143.3'  
2. 90°41'E 85.3'  
3. 104°47'E 43.8'  
4. 130°02'E 65.5'  
5. 143°40'W 183.7'  
6. 53°40'E 78.9'  
7. 82°27'E 89.4'  
8. 80°48'E 52.7'  
9. 53°04'W 88.7'  
10. 84°20'W 100.2'  
11. 87°03'W 88.3'  
12. 121°50'W 157.2'  
13. 87°41'W 137'

1602  
8.20 AC.

PAR 1

LOT 1  
40.60

CS 38-137B

PARCEL 2