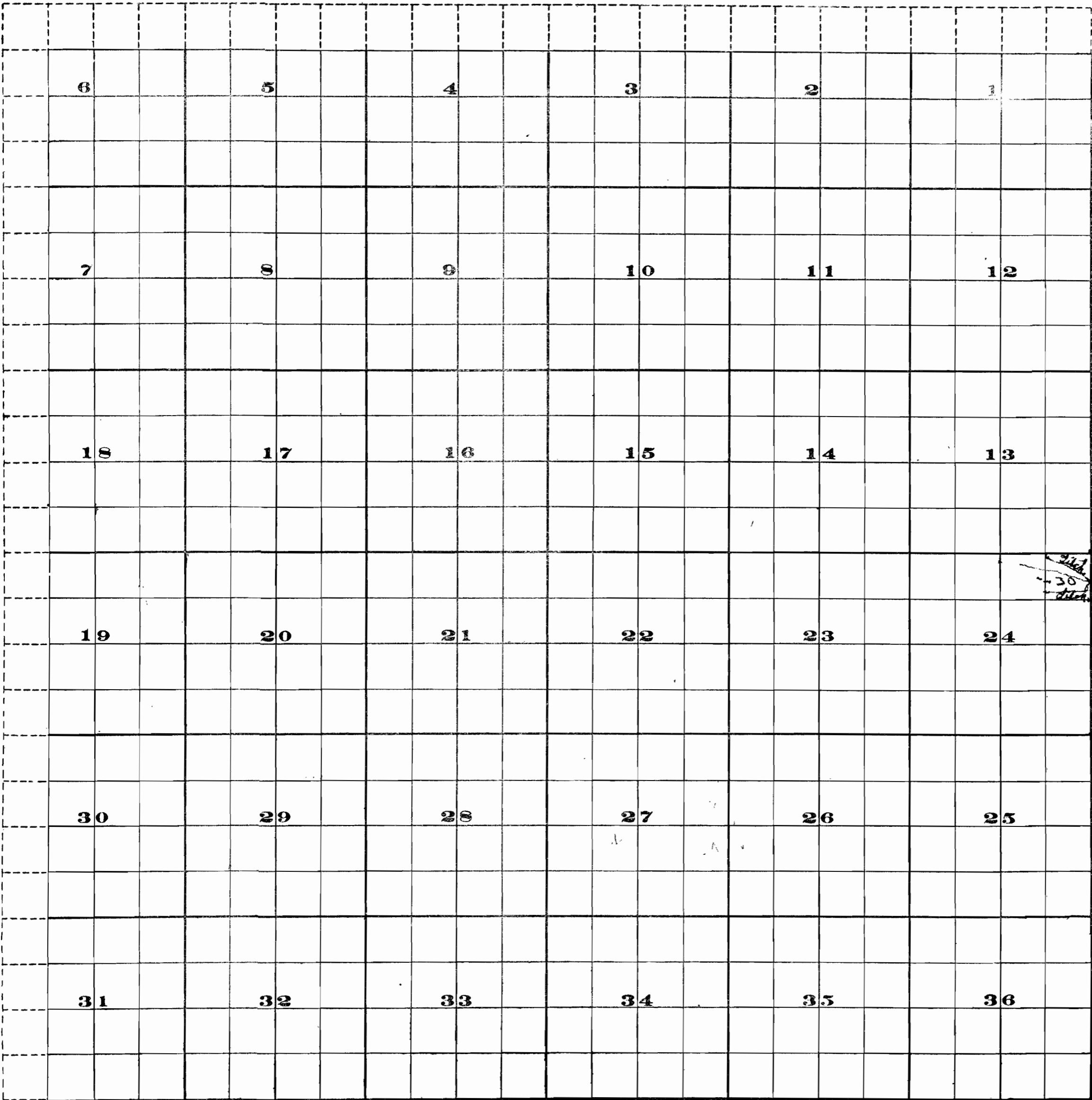


OFFICE OF STATE ENGINEER
SALEM, OREGON
SEP 30 1914

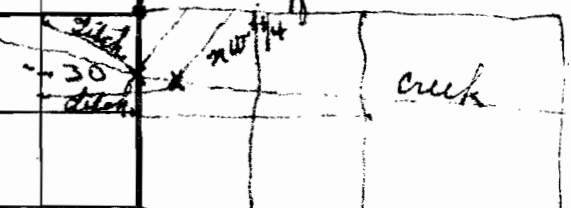
Township 14,

Range 34 E W.M.

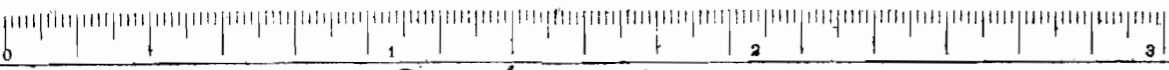
Application No. 2486
Permit No. 1367



cross line
Point of division of No. 1014
division point of South



Sec 19.7.14 S R 33 E W.M.



Scale of Feet.

OFFICE OF STATE ENGINEER

BIPOLE 1817

AUG 5 1912

711 ORG

Application No. 1
Permit No. 8

