

Map Showing Portion of Land to be Irrigated

on T.C. Beymer's Tract on

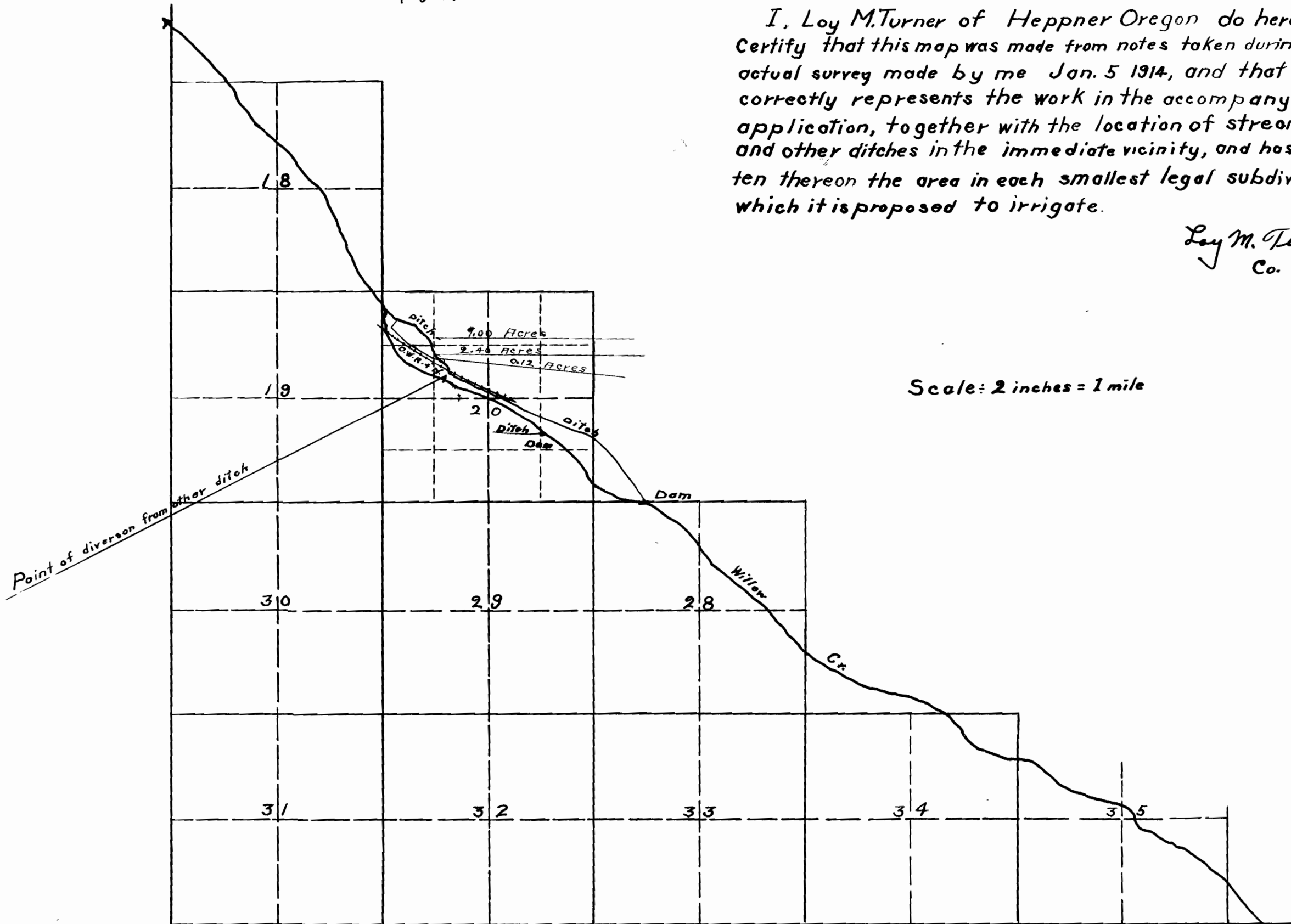
Willow Creek Morrow County Oregon.

3409 Tp. 1 S. R. 25 E. W. M.

1891

I, Loy M. Turner of Heppner Oregon do hereby Certify that this map was made from notes taken during an actual survey made by me Jan. 5 1914, and that it correctly represents the work in the accompanying application, together with the location of streams and other ditches in the immediate vicinity, and has written thereon the area in each smallest legal subdivision which it is proposed to irrigate.

Loy M. Turner
Co. Surveyor.



Scale: 2 inches = 1 mile