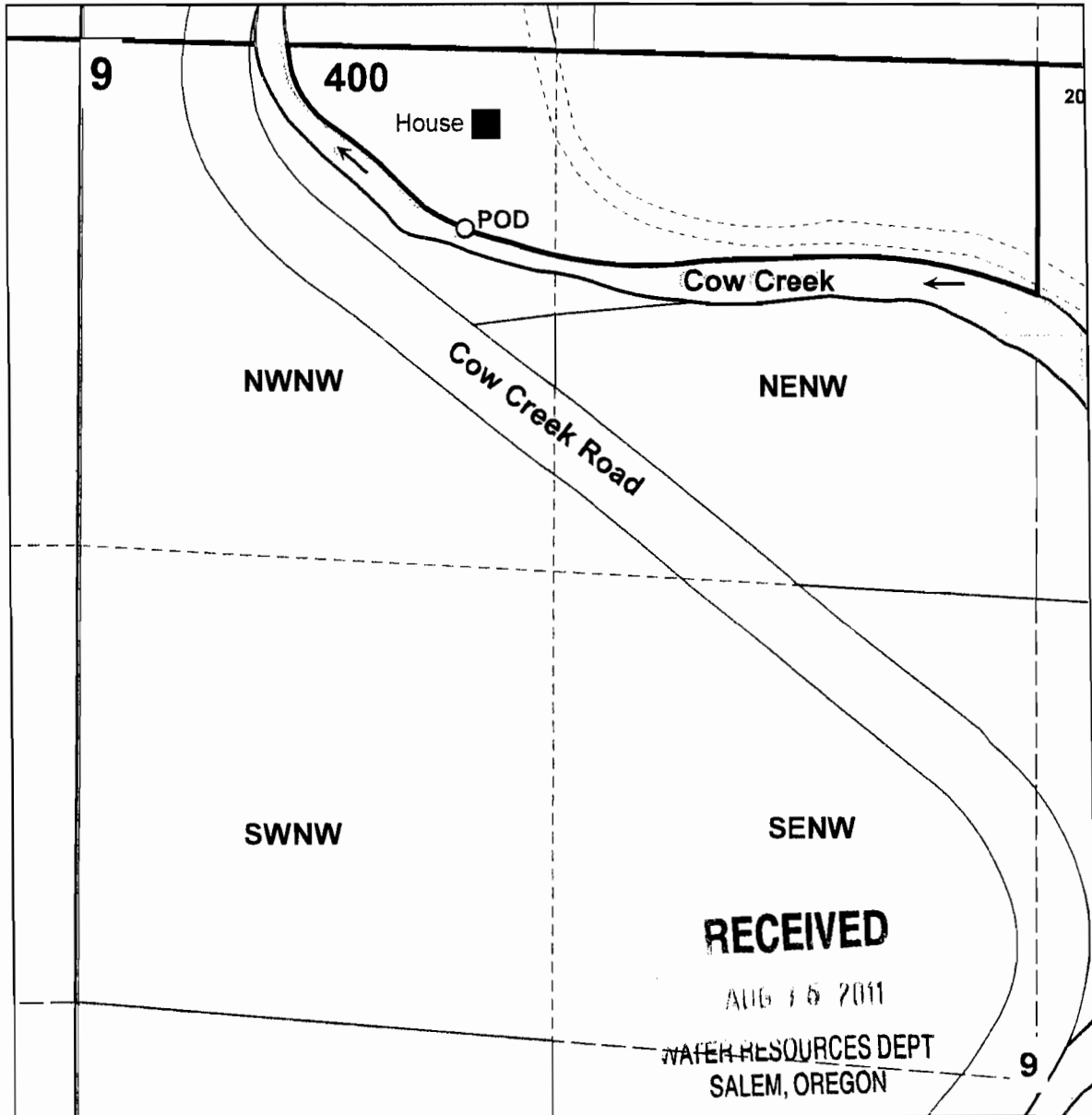


Application Map for
David Quesada and Jan Nelson

NW1/4 SEC.9 T.31S. R.7W. W.M.
DOUGLAS COUNTY
Scale 1" = 500'

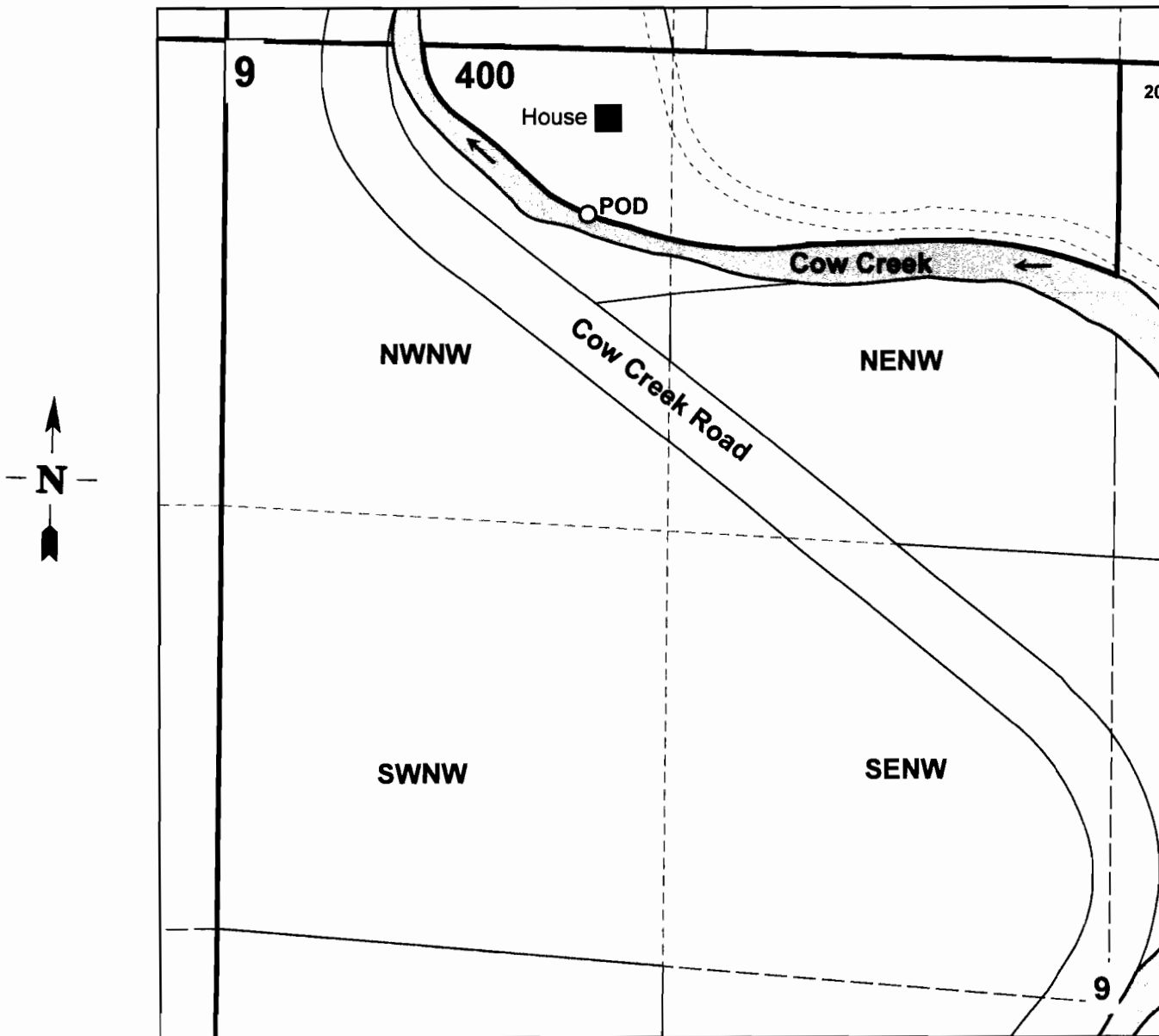


Point of Diversion is 500 ft. south and 1100 ft. East
from the NW Corner of Section 9

S-87744

Application Map for
David Quesada and Jan Nelson

NW1/4 SEC.9 T.31S. R.7W. W.M.
DOUGLAS COUNTY
Scale 1" = 500'



Point of Diversion is 500 ft. south and 1100 ft. East
from the NW Corner of Section 9

RECEIVED

S-87744

AUG 15 2011
WATER RESOURCES DEPT
SALEM, OREGON