

PLAT
OF
LOOSLEY-WOOD RIVER DITCH

accompanying
Application to enlarge and extend
Scale 1" = 40 chs.
Surveyed Nov. 1909

By Don J. Zumwalt.

I, Don J. Zumwalt, of Klamath Falls, Oregon, do hereby certify that this map was made from notes taken during an actual survey made by me on November 12, 1909, and that it correctly represents the works described in the accompanying application, together with the location of streams and other ditches in the immediate vicinity, and has written thereon the area in each smallest legal subdivision which it is proposed to cover.

Don J. Zumwalt.
Surveyor.

Application No. 1137
Enlargement Permit No. 81

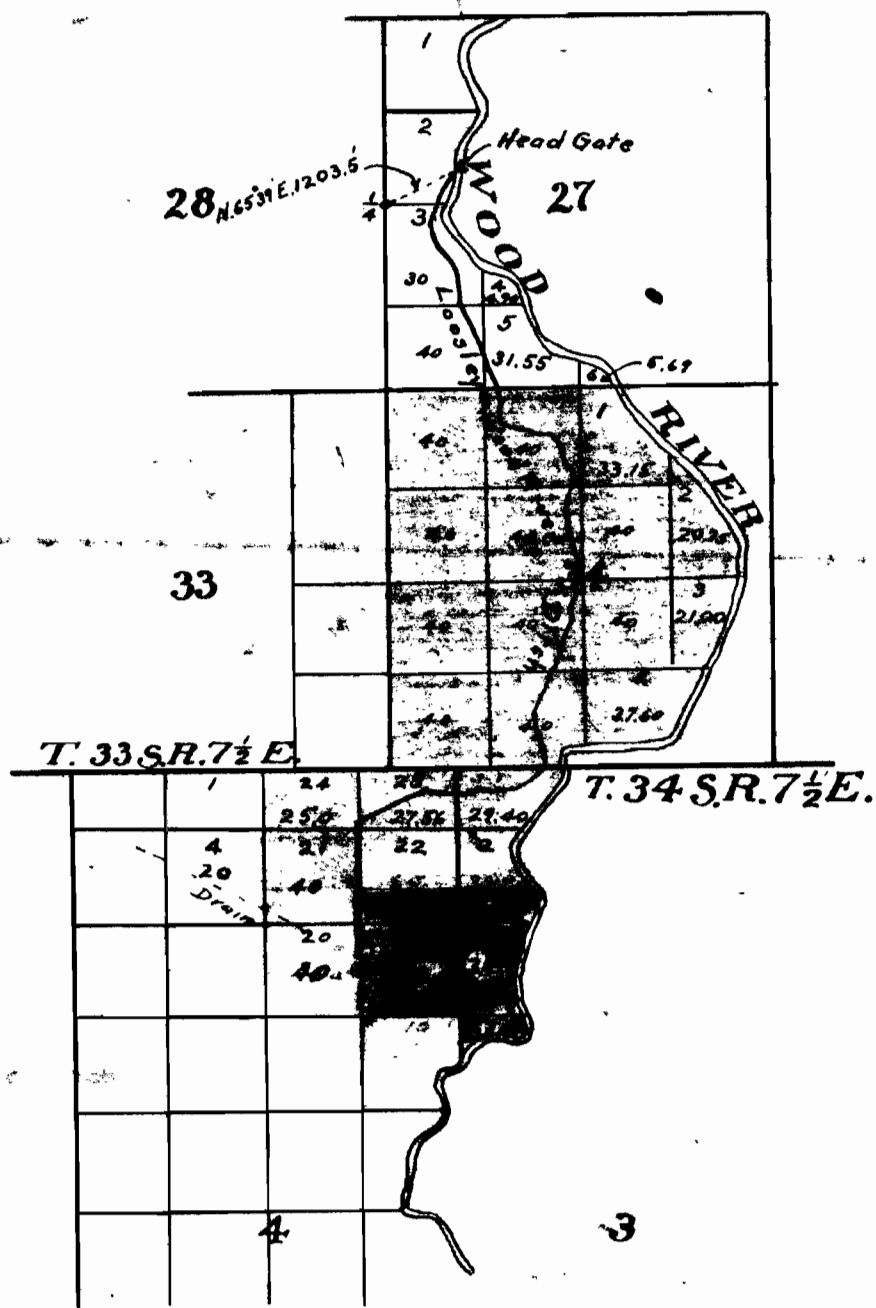


Table of Courses and Distances

From the $\frac{1}{4}$ Sec. Cor. between Secs. 27 & 28, T. 33 S. R. 7 $\frac{1}{2}$ E. to the Head Gate of the Loosley-Wood River Ditch, is N. 65° 39' E. 1203.5 ft., thence down the ditch:

- | | |
|--|--|
| 1. S. 39° 0' W. 510' | 20. S. 9° 50' E. 600' |
| 2. S. 30° 33' W. 100' | 21. S. 29° 0' E. 310' |
| 3. S. 9° 03' W. 200' | 22. S. 8° 40' W. 350' |
| 4. S. 9° 46' W. 200' | 23. S. 41° 48' W. 310' |
| 5. S. 5° 40' W. 42' | 24. S. 3° 05' E. 310' |
| 6. S. 20° 26' E. 100' | 25. S. 38° 52' W. 200' |
| 7. S. 35° 47' E. 400' To present Ditch | 26. S. 8° 28' W. 350' |
| 8. S. 21° 58' E. 120' | 27. S. 24° 19' W. 710' |
| 9. S. 4° 55' E. 150' | 28. S. 28° 01' E. 700' |
| 10. S. 0° 50' W. 320' | 29. S. 2° 52' W. 200' |
| 11. S. 23° 45' E. 1200' To Waste Gate | 30. S. 43° 43' W. 230' |
| 12. S. 11° 43' E. 400' | 31. S. 59° 51' W. 200' |
| 13. S. 17° 27' E. 200' To Lateral SW. | 32. S. 82° 19' W. 400' |
| 14. S. 88° 12' E. 160' | 33. N. 74° 40' W. 250' |
| 15. S. 64° 56' E. 260' | 34. S. 76° 36' W. 750' To point S. 24° 42' W. from NE. Cor. Sec. 4, T. 34 S. R. 7 $\frac{1}{2}$ E. |
| 16. S. 87° 12' E. 250' | 35. N. 77° 45' W. 600' |
| 17. S. 18° 45' E. 150' | 36. S. 41° 09' W. 860' |
| 18. S. 39° 35' E. 400' | 37. S. 0° 23' W. 1740' Terminus |
| 19. S. 20° 26' W. 400' | |

NOTE:- Portion tinted red indicates land covered by existing ditch.
Portion tinted yellow indicates land to be covered by enlargement.

1137

T.35.S.



LEGEND:
 Tracts as colored show lands as covered by Water right Permits, Certificates or Klamath County Court Decrees, on lands of the Fort Klamath Meadows Co.

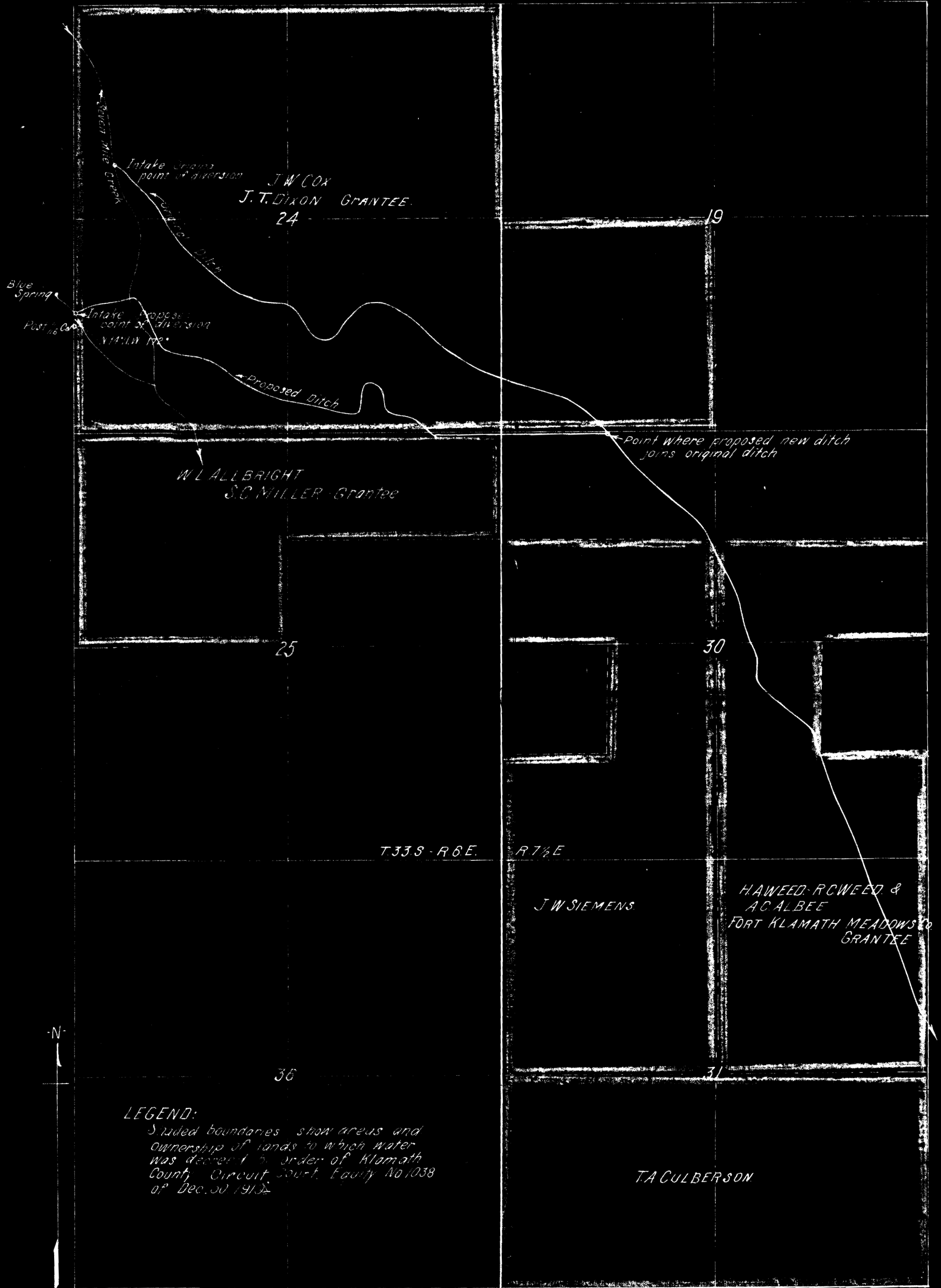
MAP
 SHOWING LOCATION OF
MEADOWS DRAINAGE DISTRICT
 KLAMATH CO. ORE.
 SCALE 2000' = 1"

UPPER KLAMATH LAKE

C. T. Darley

C. T. Darley
Chief Engineer

LEGEND



LEGEND:

Shaded boundaries show areas and ownership of lands to which water was decreed by order of Klamath County Circuit Court, Equity No 1038 of Dec. 30 1912.

MAP SHOWING DITCHES ORIGINAL & PROPOSED
 OUT OF SEVEN MILE CREEK
 KLAMATH CO. ORE.
 Scale 1"=1000'

PLAT
OF
LOOSLEY-WOOD RIVER DITCH

accompanying
Application to enlarge and extend
Scale 1" = 40 chs.
Surveyed Nov. 1909

By Don J. Zumwalt.

I, Don J. Zumwalt, of Klamath Falls, Oregon, do hereby certify that this map was made from notes taken during an actual survey made by me on November 12, 1909, and that it correctly represents the works described in the accompanying application, together with the location of streams and other ditches in the immediate vicinity, and has written thereon the area in each smallest legal subdivision which it is proposed to cover.

Don J. Zumwalt.
Surveyor.

Application No. 1137
Enlargement Permit No. 81

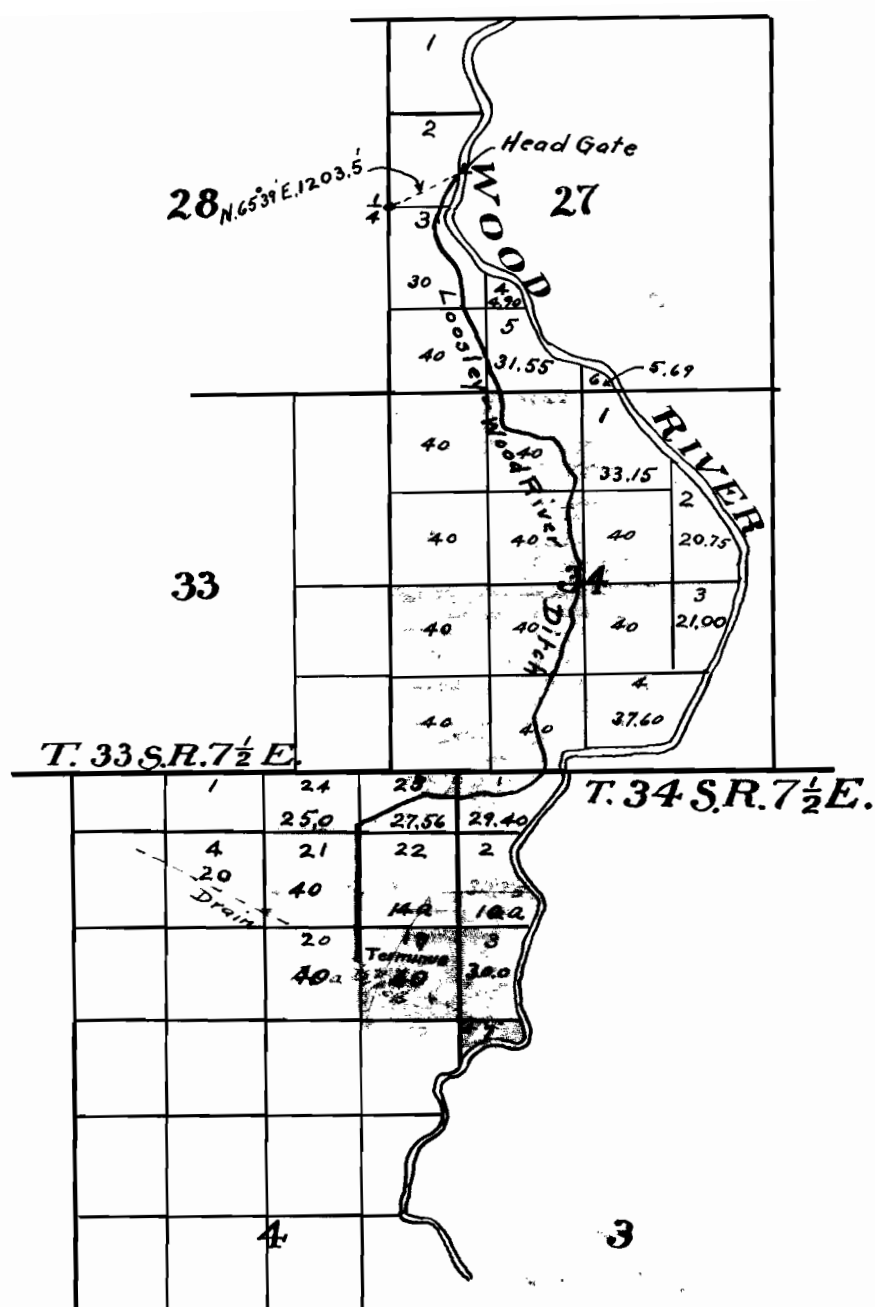


Table of Courses and Distances

From the $\frac{1}{4}$ Sec. Cor. between Secs. 27 & 28, T. 33 S. R. 7 $\frac{1}{2}$ E. to the Head Gate of the Loosley-Wood River Ditch, is N. 65° 39' E. 1203.5 ft.; thence down the ditch:

- | | |
|--|--|
| 1. S. 39° 0' W. 510' | 20. S. 9° 50' E. 600' |
| 2. S. 30° 33' W. 100' | 21. S. 29° 0' E. 310' |
| 3. S. 9° 03' W. 200' | 22. S. 8° 40' W. 350' |
| 4. S. 9° 46' W. 200' | 23. S. 41° 48' W. 310' |
| 5. S. 5° 40' W. 42' | 24. S. 3° 05' E. 310' |
| 6. S. 20° 26' E. 100' | 25. S. 38° 52' W. 200' |
| 7. S. 35° 47' E. 400' To present Ditch | 26. S. 8° 28' W. 350' |
| 8. S. 21° 58' E. 120' | 27. S. 24° 19' W. 710' |
| 9. S. 4° 55' E. 150' | 28. S. 28° 01' E. 700' |
| 10. S. 0° 50' W. 320' | 29. S. 2° 52' W. 200' |
| 11. S. 23° 45' E. 1200' To Waste Gate | 30. S. 43° 43' W. 230' |
| 12. S. 11° 43' E. 400' | 31. S. 59° 51' W. 200' |
| 13. S. 17° 27' E. 200' To Lateral SW. | 32. S. 82° 19' W. 400' |
| 14. S. 88° 12' E. 160' | 33. N. 74° 40' W. 250' |
| 15. S. 64° 56' E. 260' | 34. S. 76° 36' W. 750' To a point S. 24° 42' ^{466'} W. from |
| 16. S. 87° 12' E. 250' | NE. Cor. Sec. 4, T. 34 S. R. 7 $\frac{1}{2}$ E. |
| 17. S. 18° 45' E. 150' | 35. N. 77° 45' W. 600' |
| 18. S. 39° 35' E. 400' | 36. S. 41° 09' W. 860' |
| 19. S. 20° 26' W. 400' | 37. S. 0° 23' W. 1740' Terminus |

NOTE:- Portion tinted red indicates land covered by existing ditch.
Portion tinted yellow indicates land to be covered by enlargement.

1137