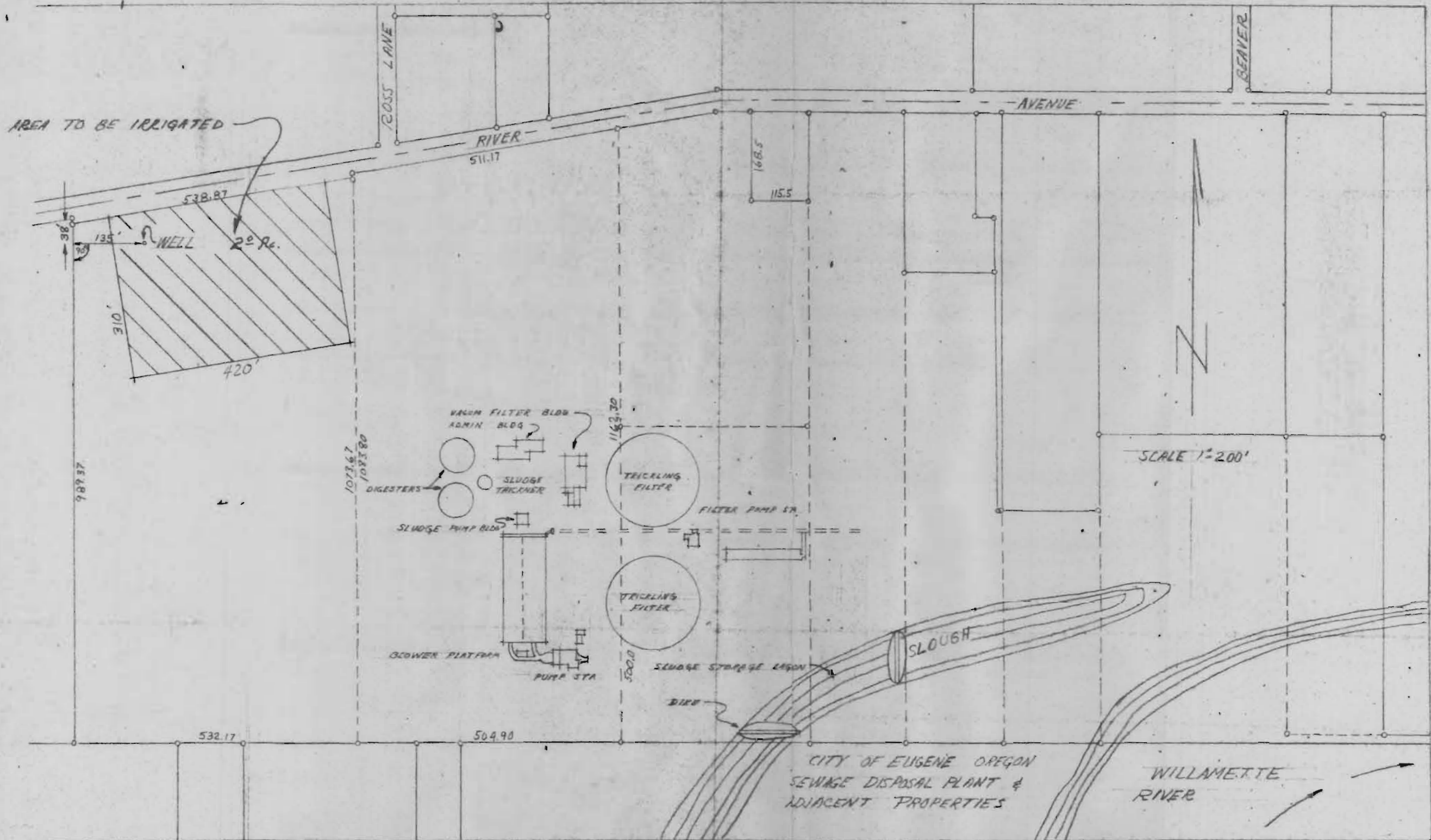
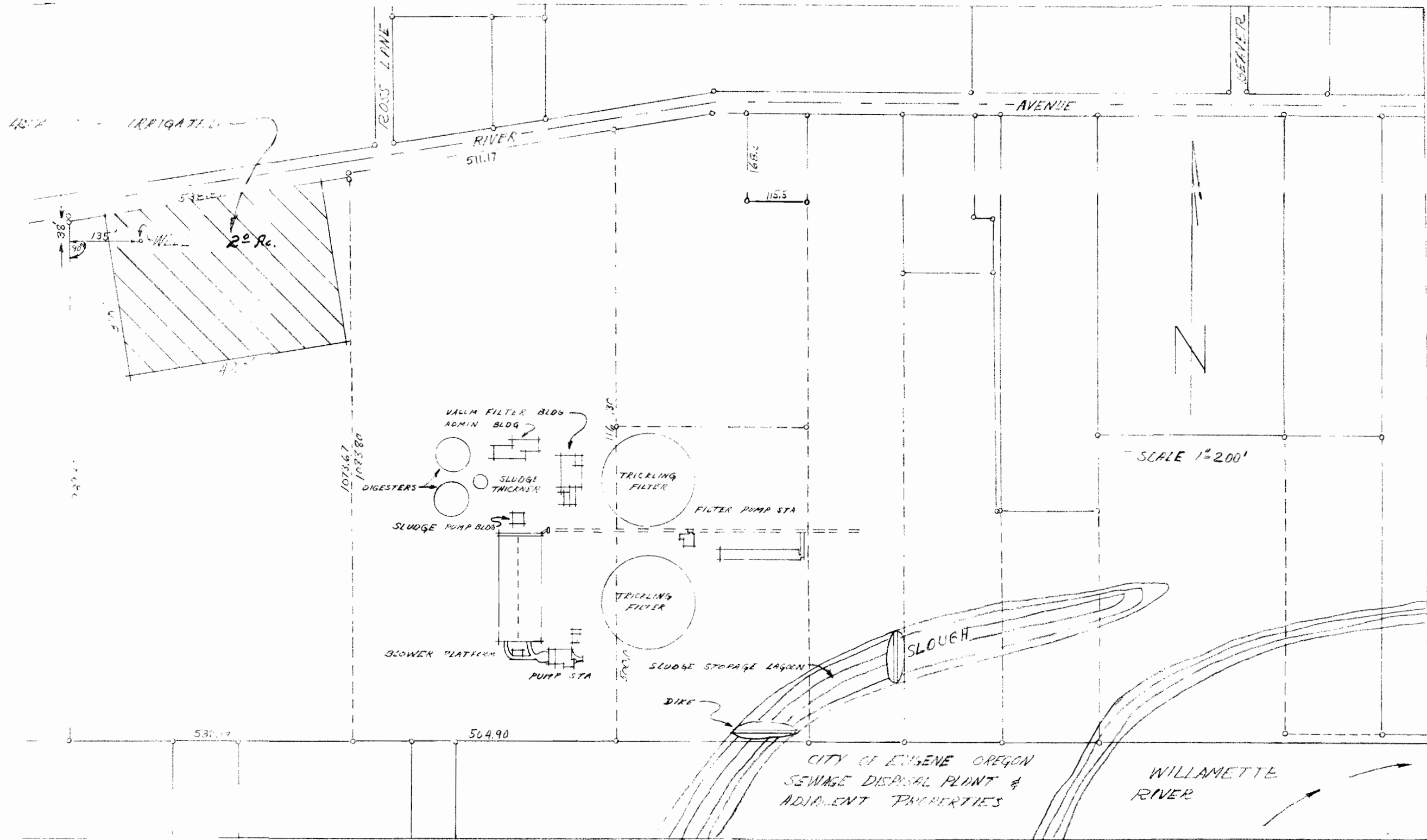


Application No. G-3148
Permit No. G-2965



LOCATION : NE 1/4 NW 1/4 SEC. 13 T17S R4W WM.

Application No. G-3148
 Permit No. G-2965



LOCATION = NE 1/4 NW 1/4 SEC. 13 T17S R4W WM

Application No. G-3148
 Permit No. G-2965