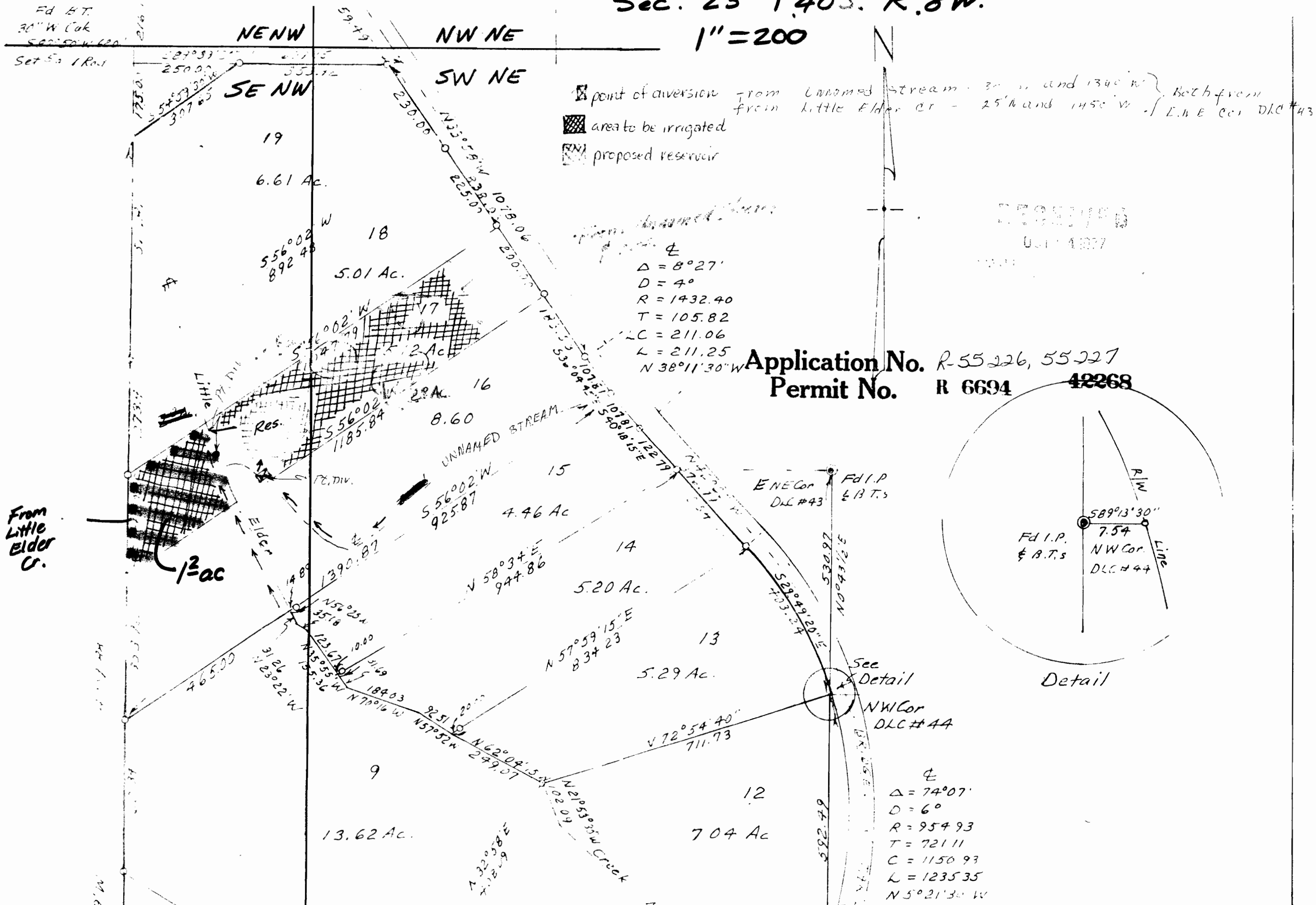


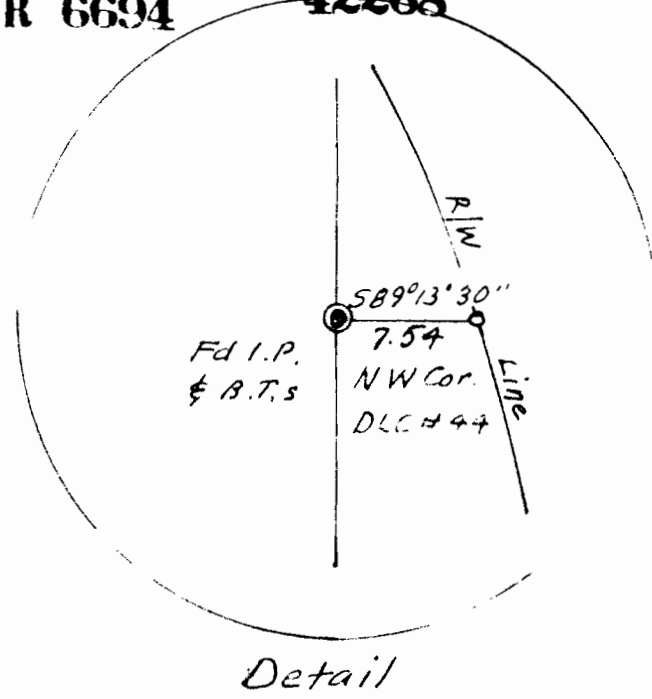
Sec. 23 T40S. R.8W.

1" = 200



$\Delta = 8^{\circ}27'$   
 $D = 4^{\circ}$   
 $R = 1432.40$   
 $T = 105.82$   
 $C = 211.06$   
 $L = 211.25$   
 $N 38^{\circ}11'30" W$

Application No. R-55226, 55227  
 Permit No. R 6694 42268



$\Delta = 74^{\circ}07'$   
 $D = 6^{\circ}$   
 $R = 954.93$   
 $T = 721.11$   
 $C = 1150.93$   
 $L = 1235.35$   
 $N 5^{\circ}21'30" W$

Fd B.T.  
 30" W Cor  
 S 82°50' W 120'  
 Set 5a 1 Row

From Little Elder Cr.

1/2 ac

See Detail  
 NW Cor  
 DLC #44

