

to Water Resources Dept

FROM Victor Flores

RECEIVED

FEB 19 2008

WATER RESOURCES DEPT
SALEM, OREGON

Re G 16882 -

George J. Gerspacher. is authorized to
act as my representative in helping
me file for water rights.

V

Sincerely
Victor Flores

2/19/08

RECEIVED

FEB 19 2008

WATER RESOURCES DEPT
SALEM, OREGON

616882

To: Water Resources Dept
From: Victor Flores

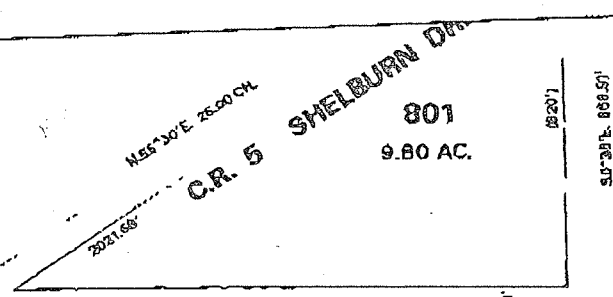
IT IS MY INTENTION TO USE
EITHER HAND SALS TO IRRIGATE THE EXISTING
WATER RIGHT AND THE 15.7 ACRES APPLIED
FOR OR A WHEEL LINE. THERE WILL
BE EITHER 4" OR 6" PIPE ^{USED} FROM THE
WELL TO THE 15.7 ACRES

Sincerely

Victor Flores

Victor Flores
2/19/08

6 16882
Aerial Map

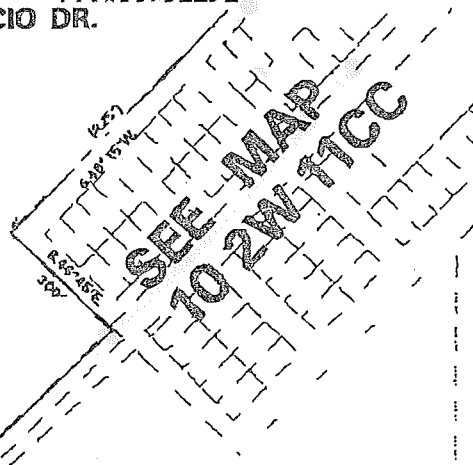


C.R. 4 JEFFERSON - SCIO DR.

800
38.21 AC.

★
37 ACRES

LOT 6
53.20 AC.



SW COR.
LEWIS STEWART
D.L.C. 54

1/4 COR.

SEE MAP
10 2W 15A

Non-a

| | |
|----|----|
| 10 | 11 |
| 15 | 14 |

10 2W 10

02/28/05.10:16:33. Mon

RECEIVED

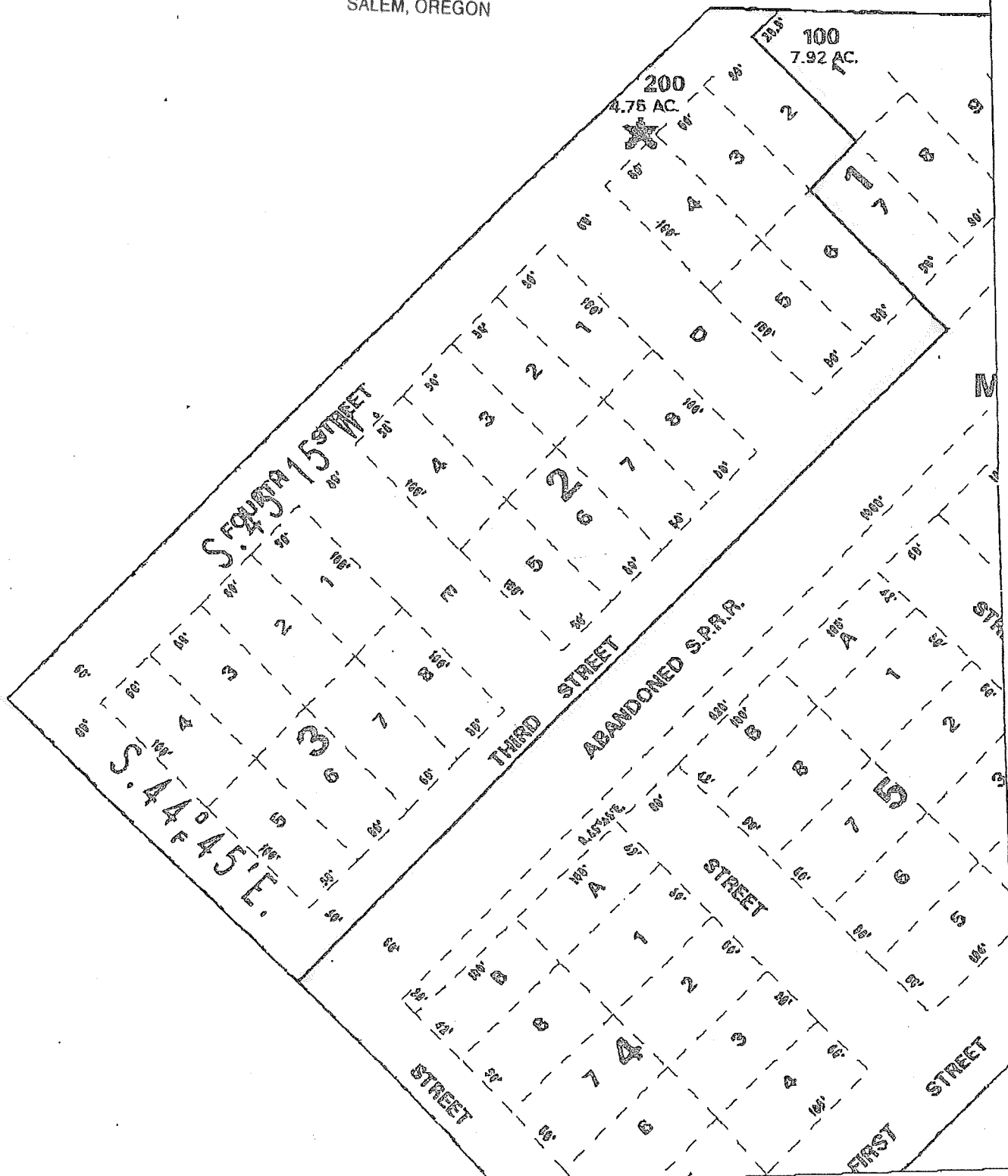
FEB 19 2008

WATER RESOURCES DEPT
SALEM, OREGON

RECEIVED

FEB 19 2008

WATER RESOURCES DEPT
SALEM, OREGON



THIS MAP WAS PREPARED FOR
ASSESSMENT PURPOSES ONLY

SEE MAP 10 2W 9

140-15
P&S CO. PART INTEREST
N.E. 1/4 Sec. 24

95-8

SEE MAP 10 2W 3
SEE 10 T100S. R. 02W. W. 11.
MINN. COUNTY, OREGON

SEE MAP 10 2W 15

SEE MAP
10 2W 15A

SEE MAP 10 2W 11

10 2W 10

RECEIVED

FEB 19 2008

WATER RESOURCES DEPT
SALEM, OREGON

THIS MAP WAS PREPARED FOR
ASSESSMENT PURPOSES ONLY

SEE MAP 10 2W 9

140-15

95-8

SEE MAP 10 2W 3
SE 10 T.10S. R.02W. W.M.
LINN COUNTY, OREGON

SEE MAP 10 2W 10

10 2W 10

SEE MAP 10 2W 11

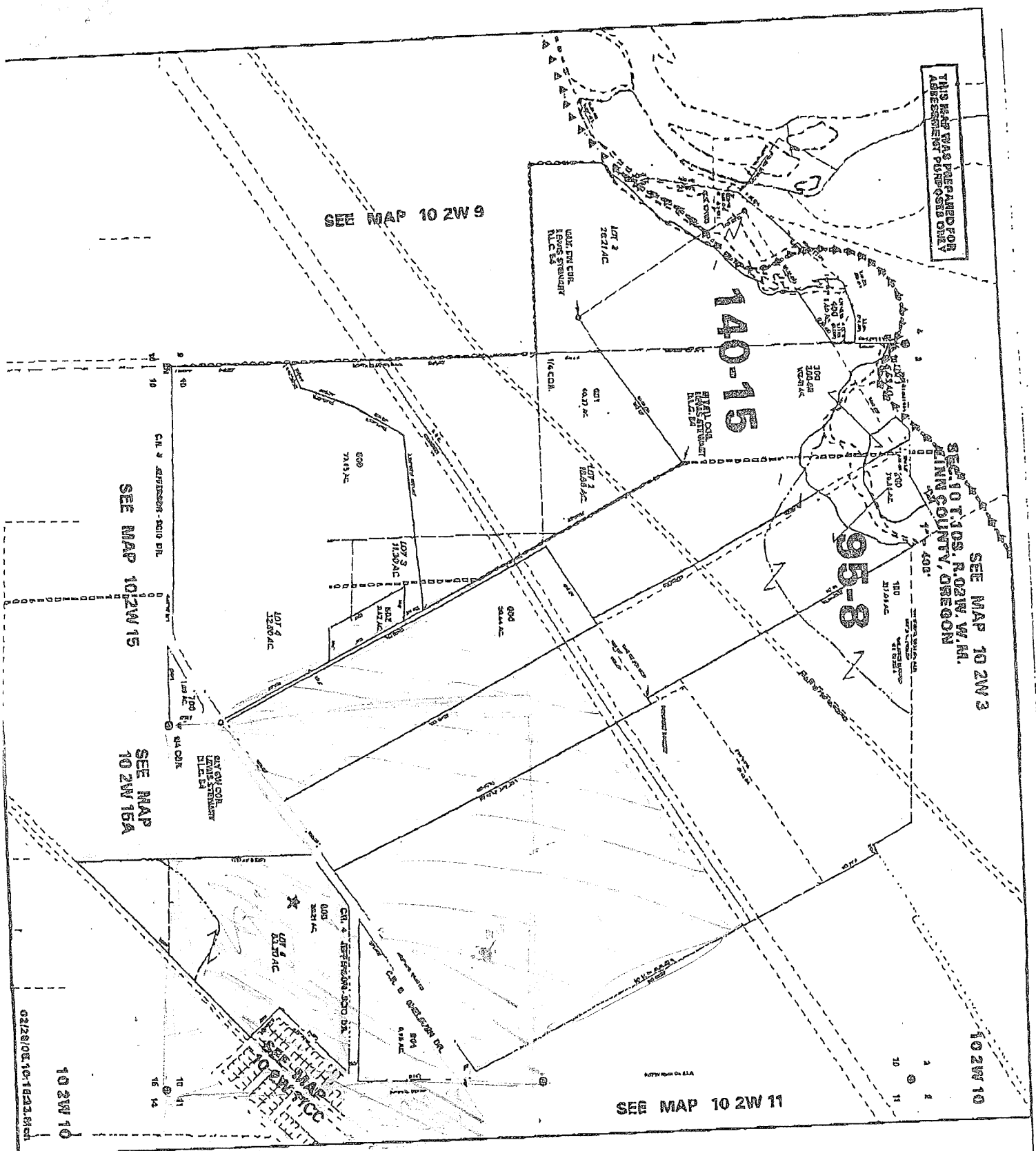
SEE MAP 10 2W 15

SEE MAP 10 2W 16A

RECEIVED

FEB 19 2008

WATER RESOURCES DEPT
SALEM, OREGON



G. L. THURSTON

GR - 79

SECS. 10, 11 & 15, T. 10 S., R. 2 W., W.M. RECEIVED OVER THE COUNTER
LINN COUNTY, OREGON

Scale: 1" = 10 Chains

January 4, 1956

RECEIVED

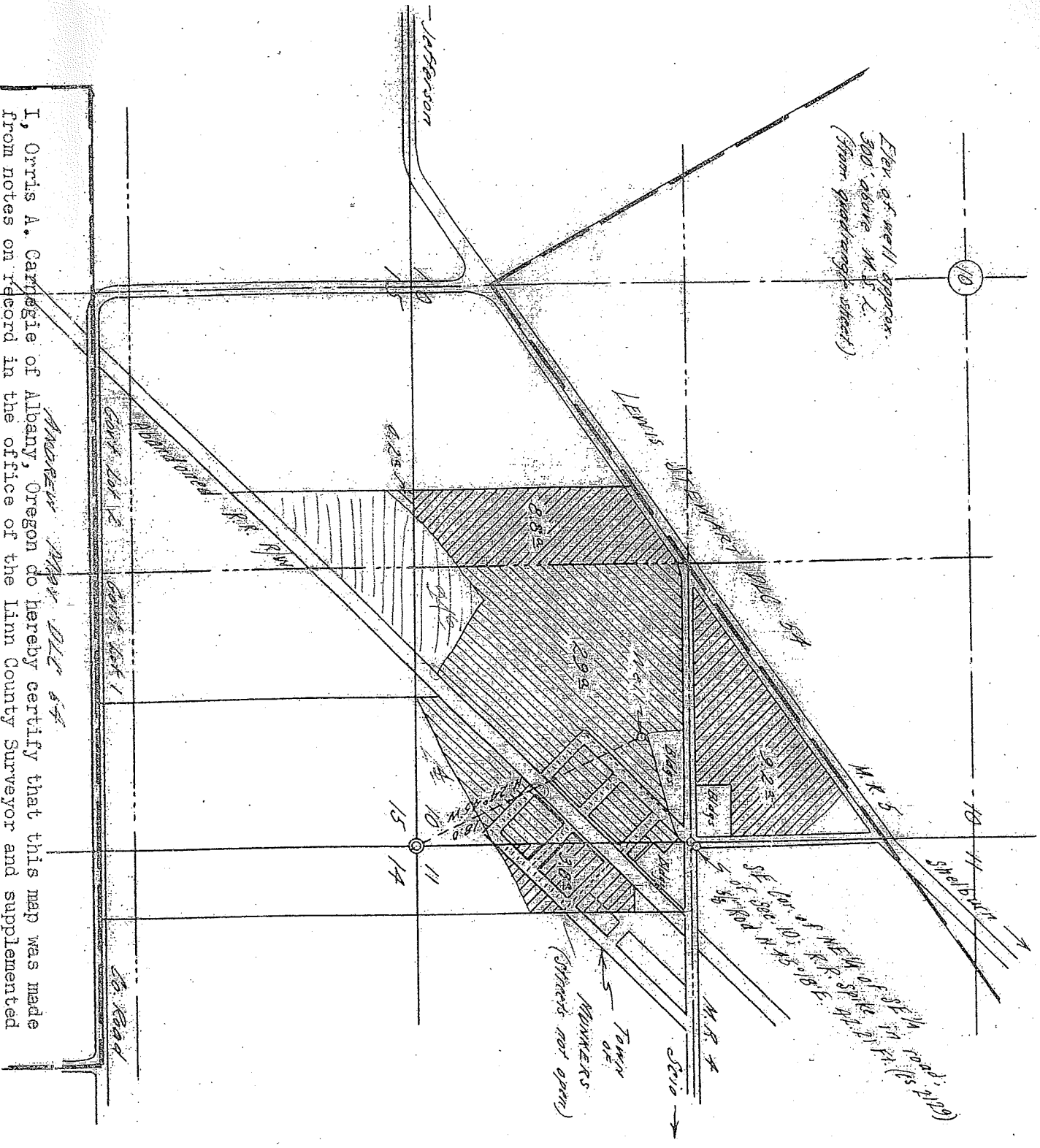
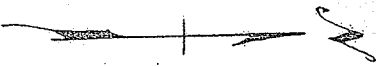
RECEIVED

FEB 19 2008

JUN 28 2011

WATER RESOURCES DEPT
SALEM, OREGON

WATER RESOURCES DEPT
SALEM, OREGON



I, Orris A. Carnegie of Albany, Oregon do hereby certify that this map was made from notes on record in the office of the Linn County Surveyor and supplemented by information taken from the latest aerial photographs; that the monument shown on this map consisting of a railroad spike (from which a 5/8" iron rod bears N. 45° 18' E. 42.21 feet) is the Southeast corner of the Northeast quarter of the Southeast quarter of Section 10 in T. 10 S., R. 2 W. of the Will. Mer. in Linn County, Oregon.

Total acreage applied for = 15.7

- 10 S 2w sec 10 Sw **SE** = 4.2
- 10 S 2w sec 10 SE **SE** = 16.3
- 10 S 2w sec 15 NE NE = 3.9
- 10 S 2w sec 15 NW NE = 6.3

REGISTERED
OREGON
LAND SURVEYOR

Orris A. Carnegie
MAY 9 1947
ORRIS A. CARNEGIE
213