

T 12 S, R 3 W, Sections:

15, 16, 20, 21, 22

From The NE NE corner Sec 21

Well 1: 1320' S 400' W

Well 2: 1656' S 300' W

Well 3: 1980' S 100' W

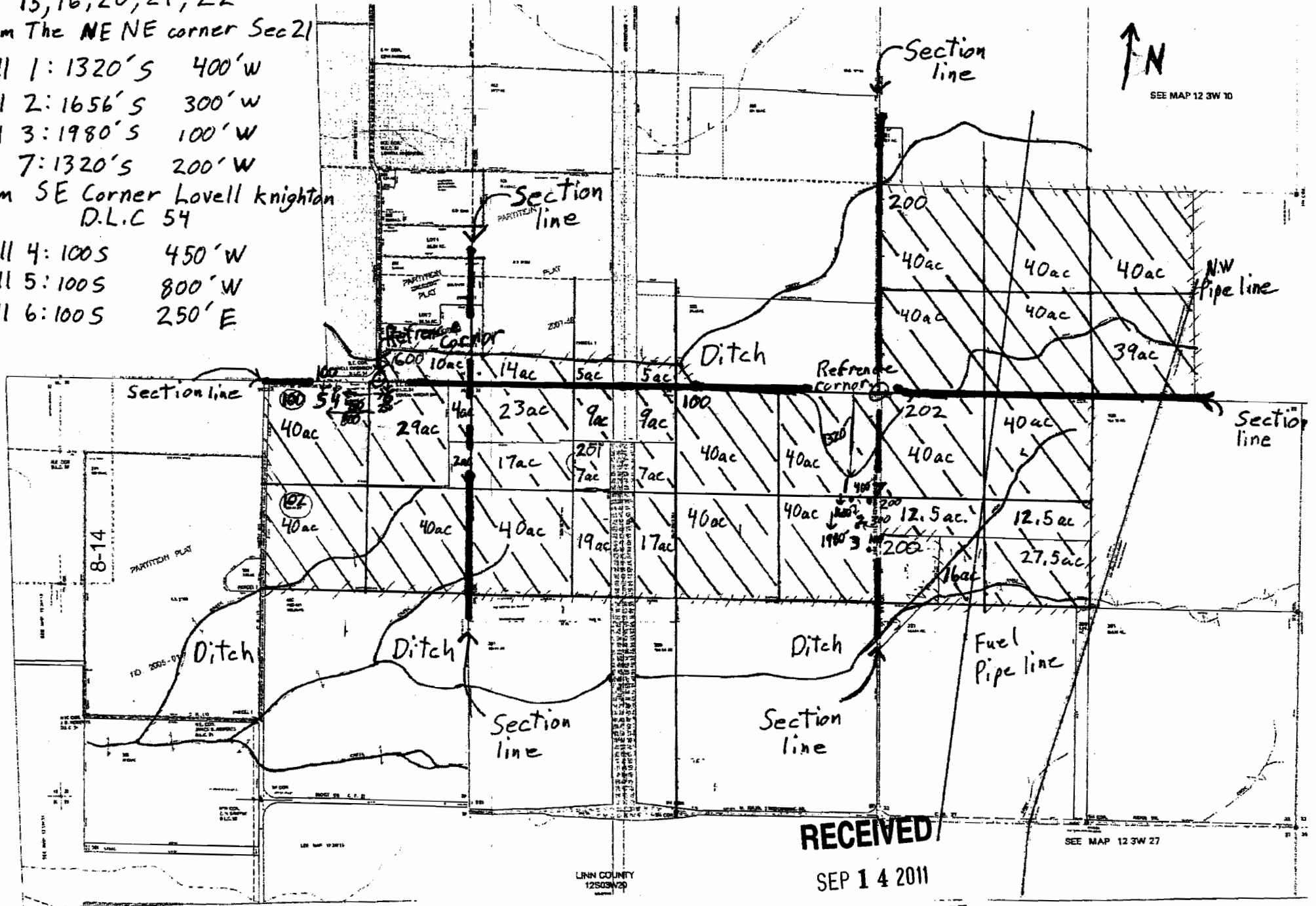
Well 7: 1320' S 200' W

From SE Corner Lovell knightan  
D.L.C 54

Well 4: 100 S 450' W

Well 5: 100 S 800' W

Well 6: 100 S 250' E



RECEIVED

SEP 14 2011

WATER RESOURCES DEPT  
SALEM, OREGON

G-17488

LINN COUNTY  
12803V20

SEE MAP 12 3W 27

WORK COPY

T12S, R3W, Sections:

15, 16, 20, 21, 22

From The NE NE corner Sec 21

Well 1: 1320'S 400'W

Well 2: 1656'S 300'W

Well 3: 1980'S 100'W

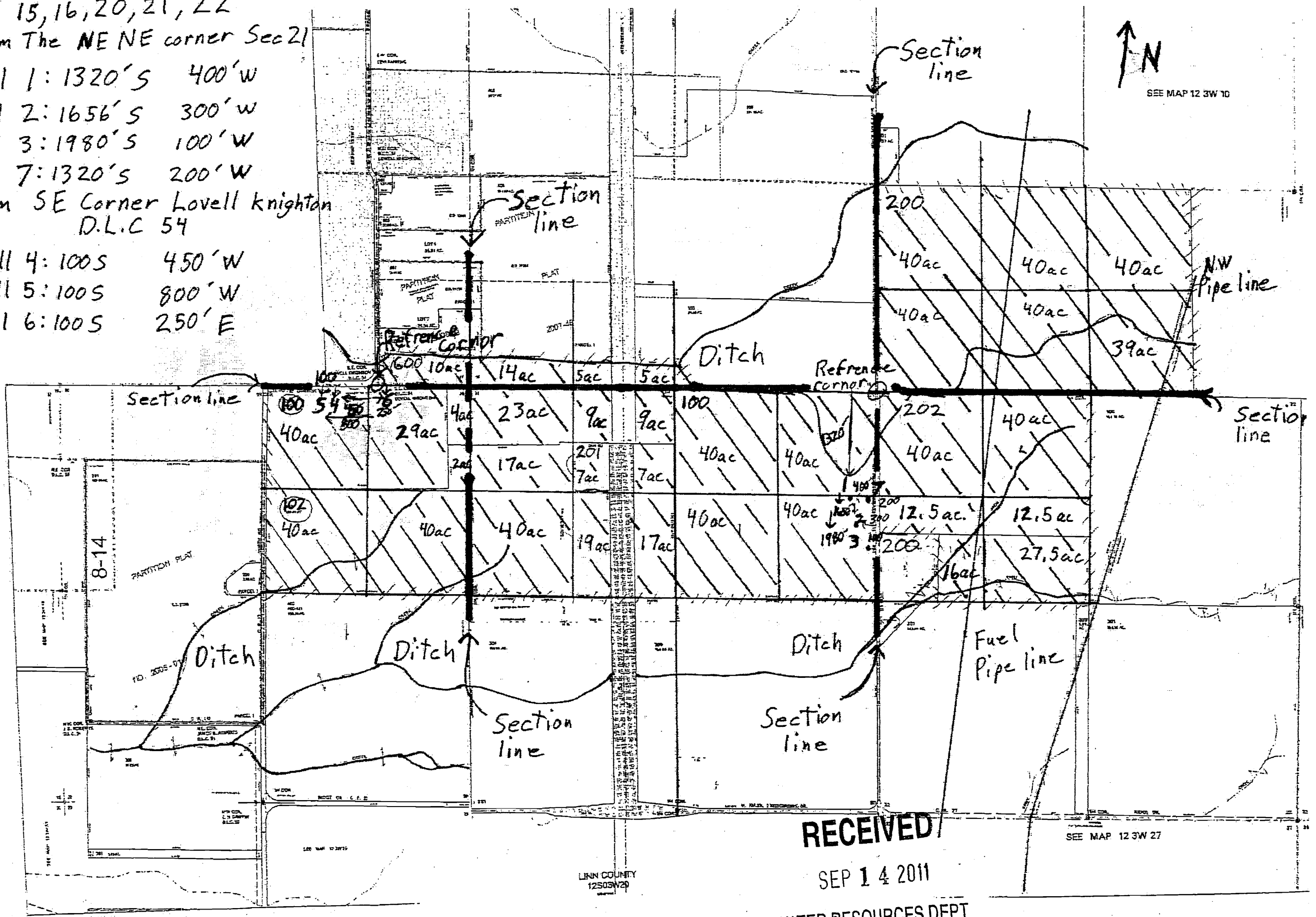
Well 7: 1320'S 200'W

From SE Corner Lovell knighton D.L.C 54

Well 4: 100S 450'W

Well 5: 100S 800'W

Well 6: 100S 250'E



G-17488

RECEIVED

SEP 14 2011

WATER RESOURCES DEPT  
SALEM OREGON