

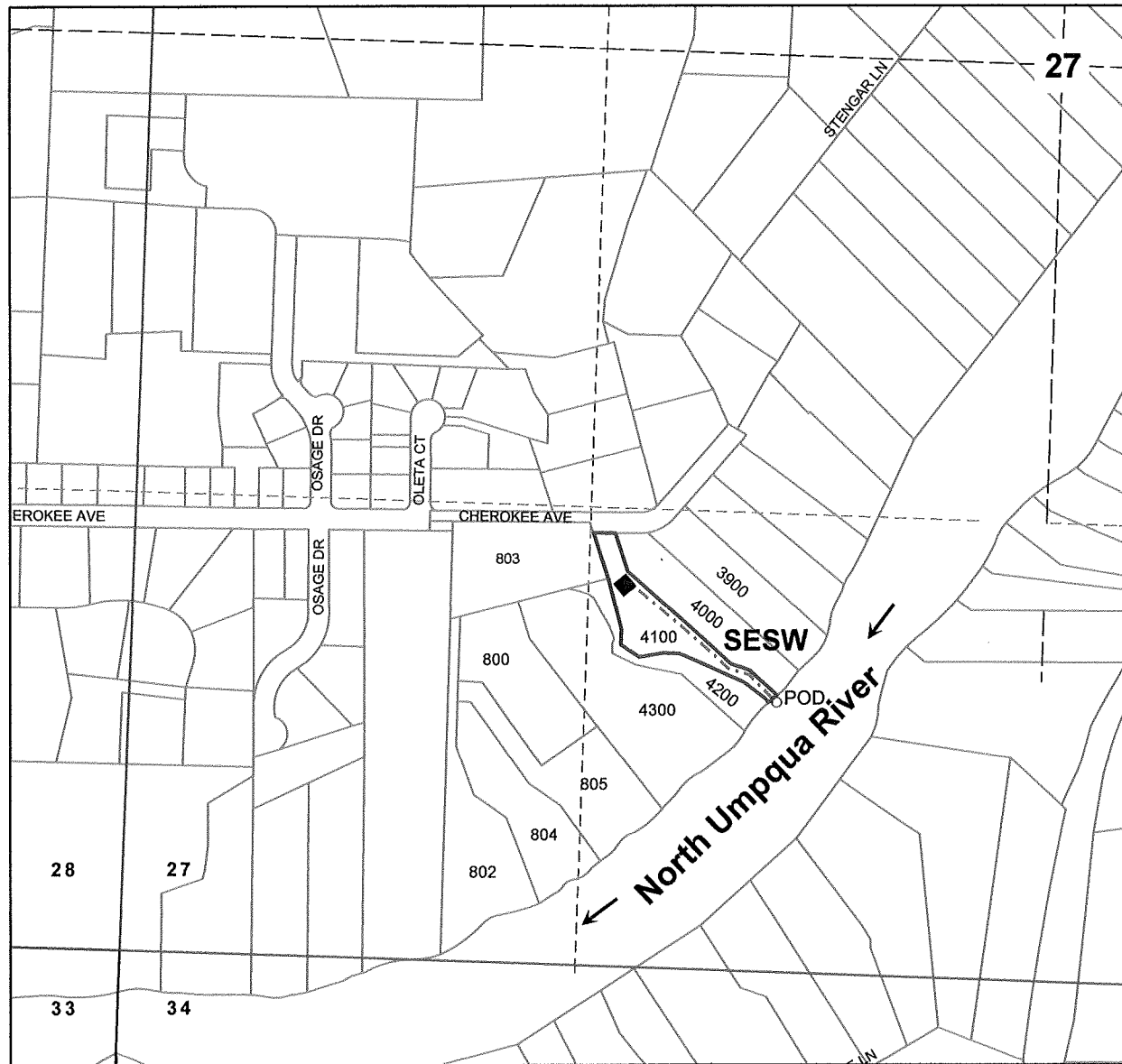
RECEIVED

SEP 20 2011

WATER RESOURCES DEPT
SALEM, OREGON

SEC.27 T.26S. R.6W. W.M.
DOUGLAS COUNTY
Scale 1" = 500'

AMENDED Bothwell Application Map



POD: 780 ft. N. and 1900 E. from the SW corner of Sec. 27

App S-87731