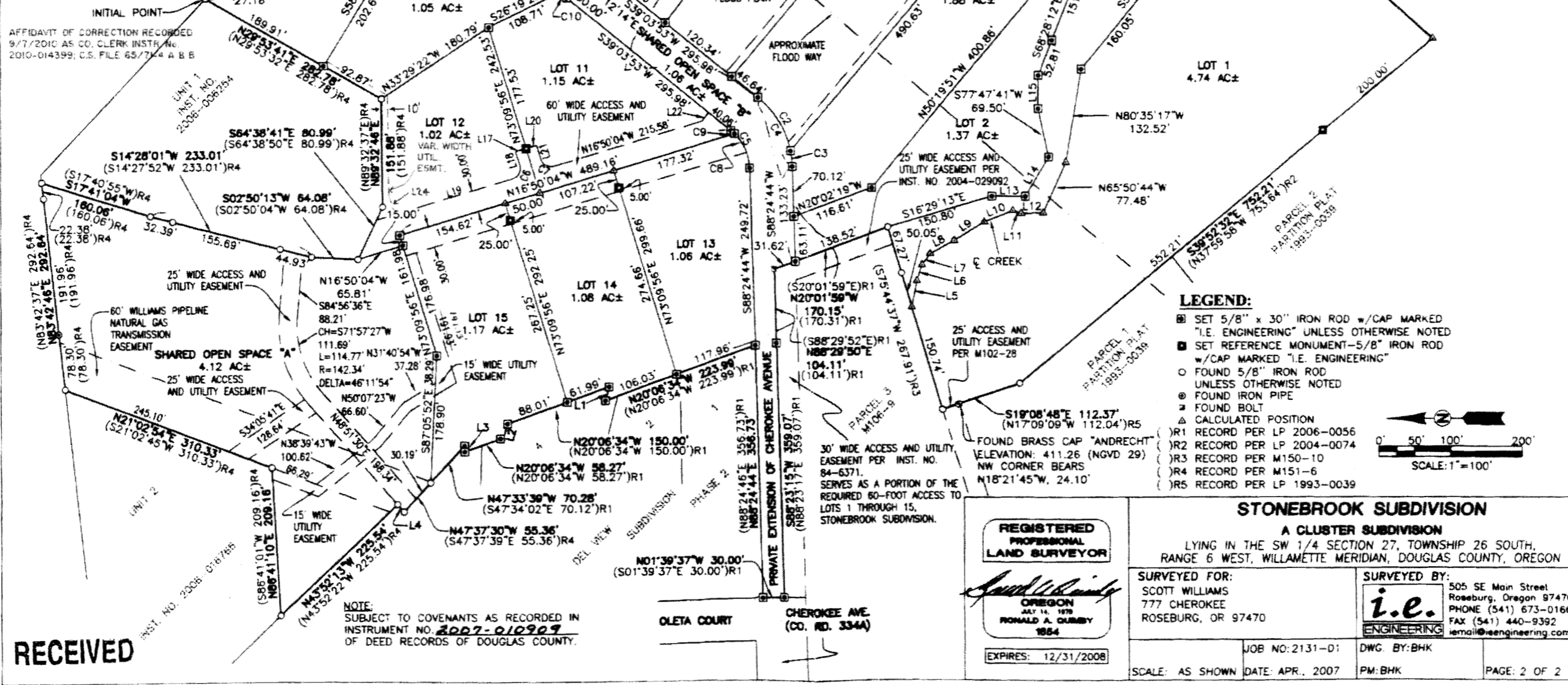


LINE	BEARING	LENGTH
L1	S75°06'34"E	20.00'
L2	N75°06'34"W	20.00'
L3	N86°33'36"E	8.38'
L4	N49°06'14"E	14.20'
L5	S78°47'14"E	37.75'
L6	S71°54'48"E	23.47'
L7	S53°31'37"E	19.40'
L8	S28°25'38"E	38.25'
L9	S32°14'30"E	48.70'
L10	S22°05'21"E	42.43'
L11	S18°13'49"W	12.48'
L12	S00°37'06"E	30.43'
L13	N00°26'54"E	46.30'
L14	S59°07'25"E	63.96'
L15	S89°52'15"E	46.71'
L23	S28°47'46"W	46.42'
L24	N73°09'56"E	26.90'

LINE	BEARING	LENGTH
L17	N16°50'04"W	15.00'
L18	S73°09'56"W	20.00'
L19	N16°50'04"W	199.64'
L20	S16°50'04"E	15.00'
L21	S73°09'56"W	20.00'
L22	S50°56'07"E	15.76'

CURVE	CHORD BEARING	CHORD LENGTH	RADIUS	CURVE LENGTH	DELTA
C1	N33°55'50"E	23.27'	130.00'	23.30'	10°16'07"
C2	N58°50'58"E	88.01'	130.00'	89.78'	39°34'09"
C3	N83°31'23"E	22.16'	130.00'	22.19'	9°46'41"
C4	N63°44'18"E	108.54'	130.00'	111.97'	49°20'50"
C5	N63°44'19"E	58.44'	70.00'	60.29'	49°20'51"
C6	S61°50'04"E	21.21'	15.00'	23.56'	90°00'00"
C7	S28°09'56"E	21.21'	15.00'	23.56'	90°00'00"
C8	N66°27'21"E	52.35'	70.00'	53.65'	43°54'45"
C9	N41°46'56"E	6.64'	70.00'	6.64'	5°26'05"
C10	N33°55'50"E	12.53'	70.00'	12.55'	10°16'07"



VOL. 22 PAGE 44 B

RECEIVED

WATER RESOURCES DEPT SALEM, OREGON

**REGISTERED PROFESSIONAL LAND SURVEYOR**

*Scott Williams*

OREGON  
JULY 14, 1979  
RONALD A. DUMBY  
1954

EXPIRES: 12/31/2008

**STONEBROOK SUBDIVISION**

A CLUSTER SUBDIVISION

LYING IN THE SW 1/4 SECTION 27, TOWNSHIP 26 SOUTH, RANGE 6 WEST, WILLAMETTE MERIDIAN, DOUGLAS COUNTY, OREGON

SURVEYED FOR:  
SCOTT WILLIAMS  
777 CHEROKEE  
ROSEBURG, OR 97470

SURVEYED BY:  
**i.e.**  
ENGINEERING  
505 SE Main Street  
Roseburg, Oregon 97470  
PHONE (541) 673-0166  
FAX (541) 440-9392  
email@ieengineering.com

JOB NO: 2131-01  
DATE: APR., 2007  
DWG. BY: BHK  
PM: BHK

SCALE: AS SHOWN  
PAGE: 2 OF 2

NOTE:  
SUBJECT TO COVENANTS AS RECORDED IN INSTRUMENT NO. 2007-010909 OF DEED RECORDS OF DOUGLAS COUNTY.

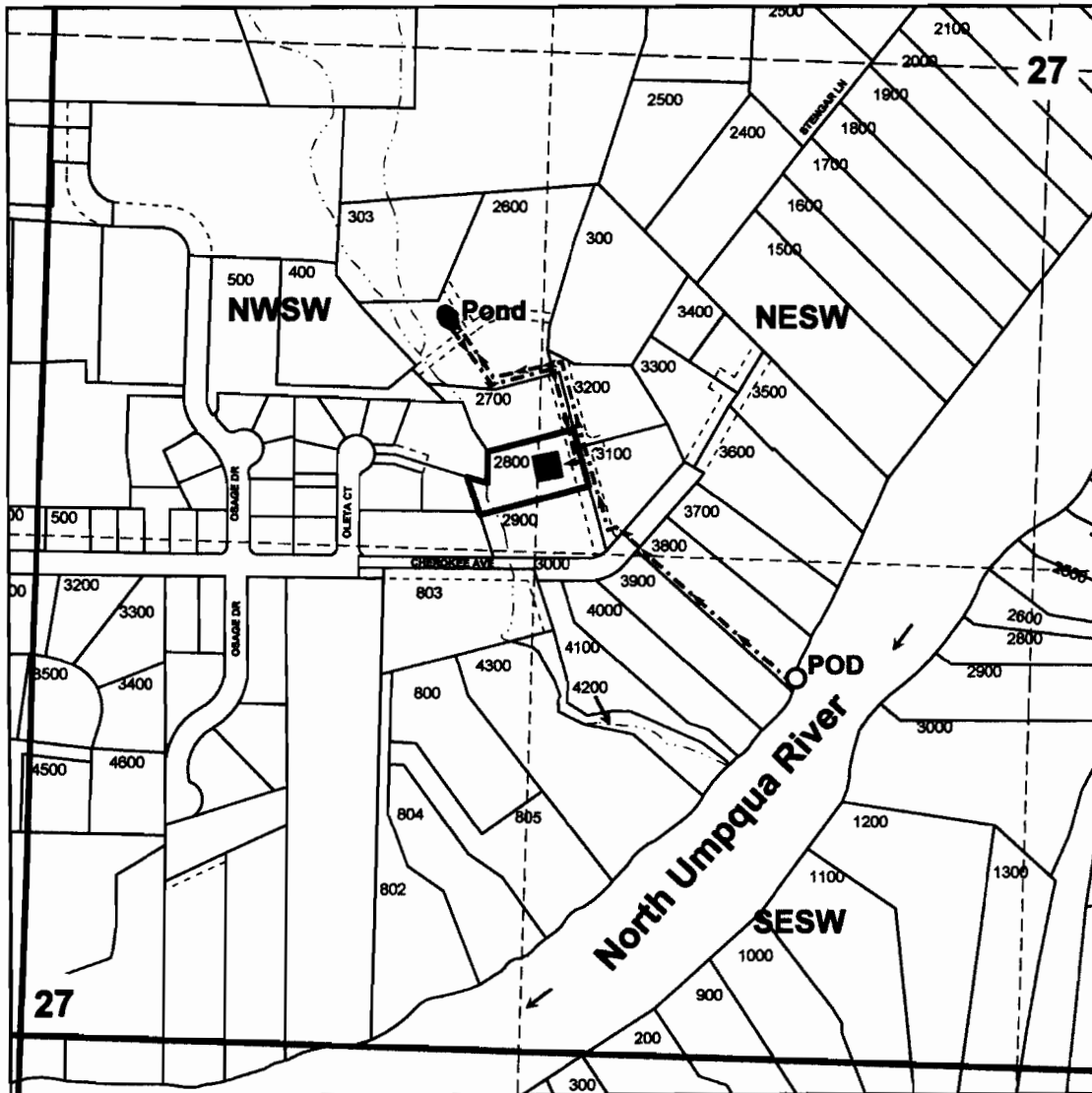
INST. NO. 2008-016785

INST. NO. 2008-008254

AFFIDAVIT OF CORRECTION RECORDED 9/7/2010 AS CO. CLERK INSTR. NO. 2010-014399; C.S. FILE 65/714 A & B

INITIAL POINT

**SEC.27 T.26S. R.6W. W.M.  
DOUGLAS COUNTY  
Scale 1" = 500'  
Abernathy Application Map**



**RECEIVED**

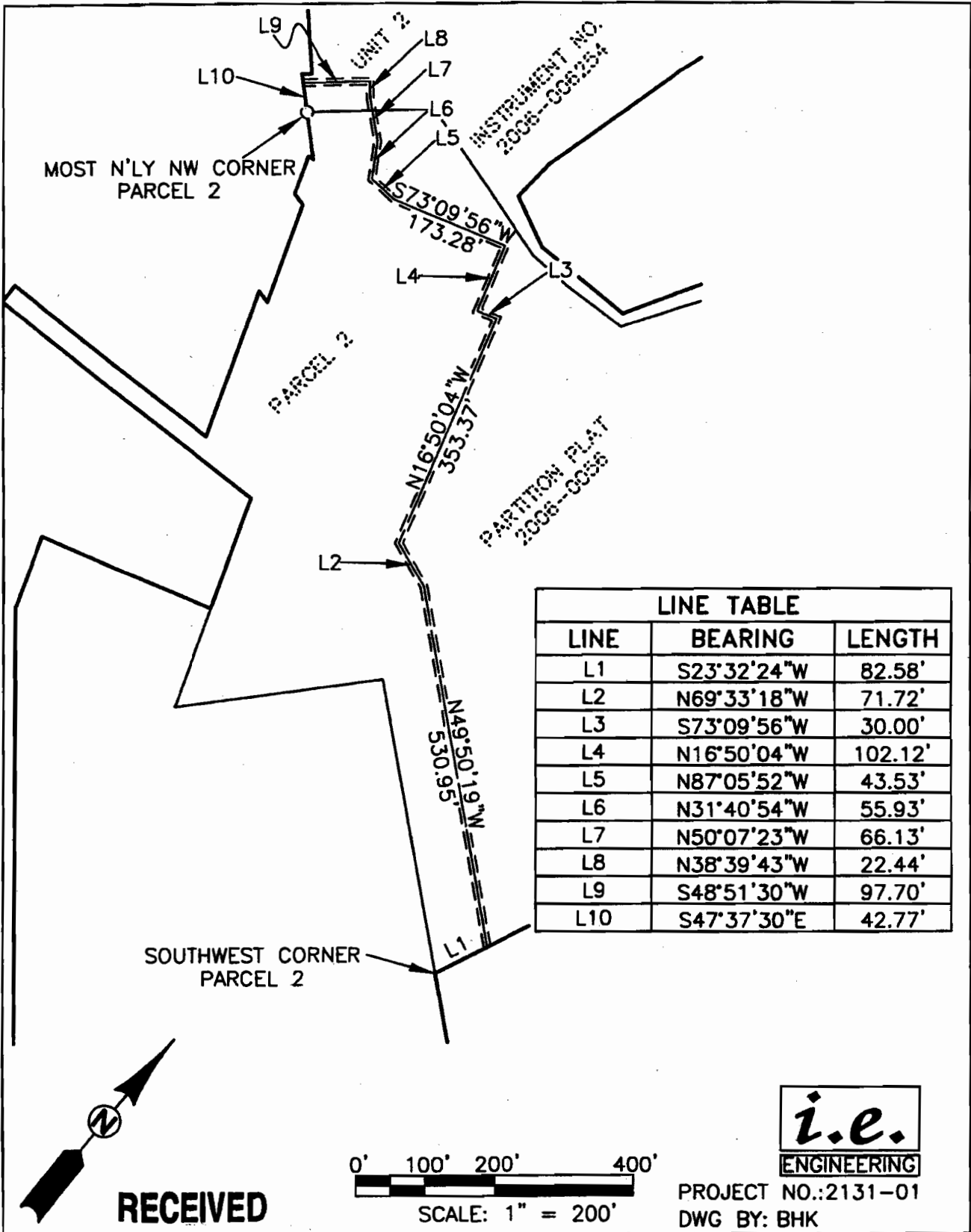
SEP 27 2011

WATER RESOURCES DEPT  
SALEM, OREGON

POD is 1640 ft. south and 635 ft. west from the center of Section 27

S-87758

# EXHIBIT "B"



RECEIVED

SEP 27 2011

WATER RESOURCES DEPT  
SALEM, OREGON

S-87758