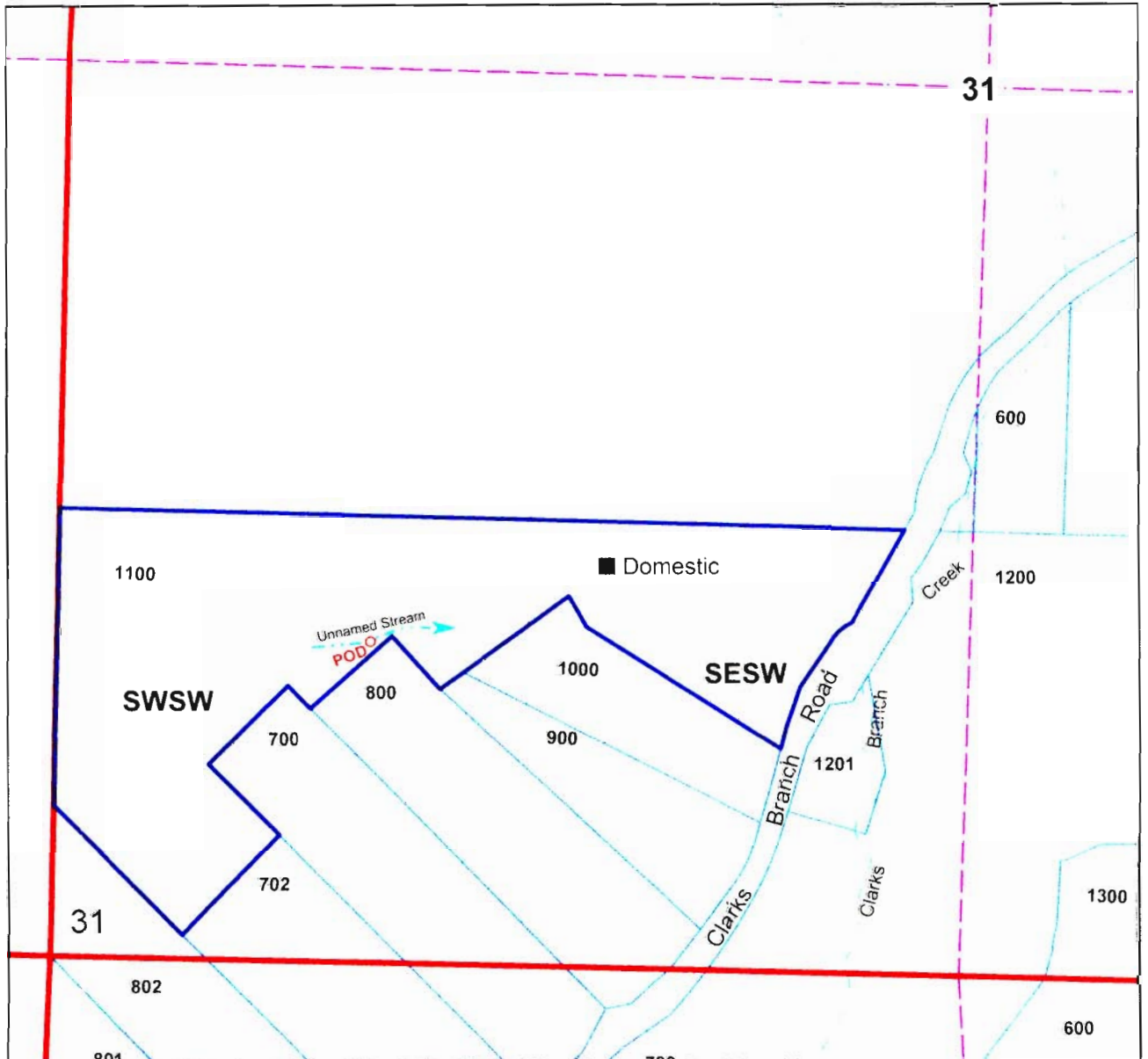


**Application Map for
Nancy Duncan**

**SECTION 31 T.28S. R.5W. W.M.
DOUGLAS COUNTY
Scale 1" = 500'**



**Point of diversion is 955 ft. north and 950 ft. east
from the Southwest Corner of Section 31.**

RECEIVED

S-81760

WATER RESOURCES DEPT
SALEM, OREGON