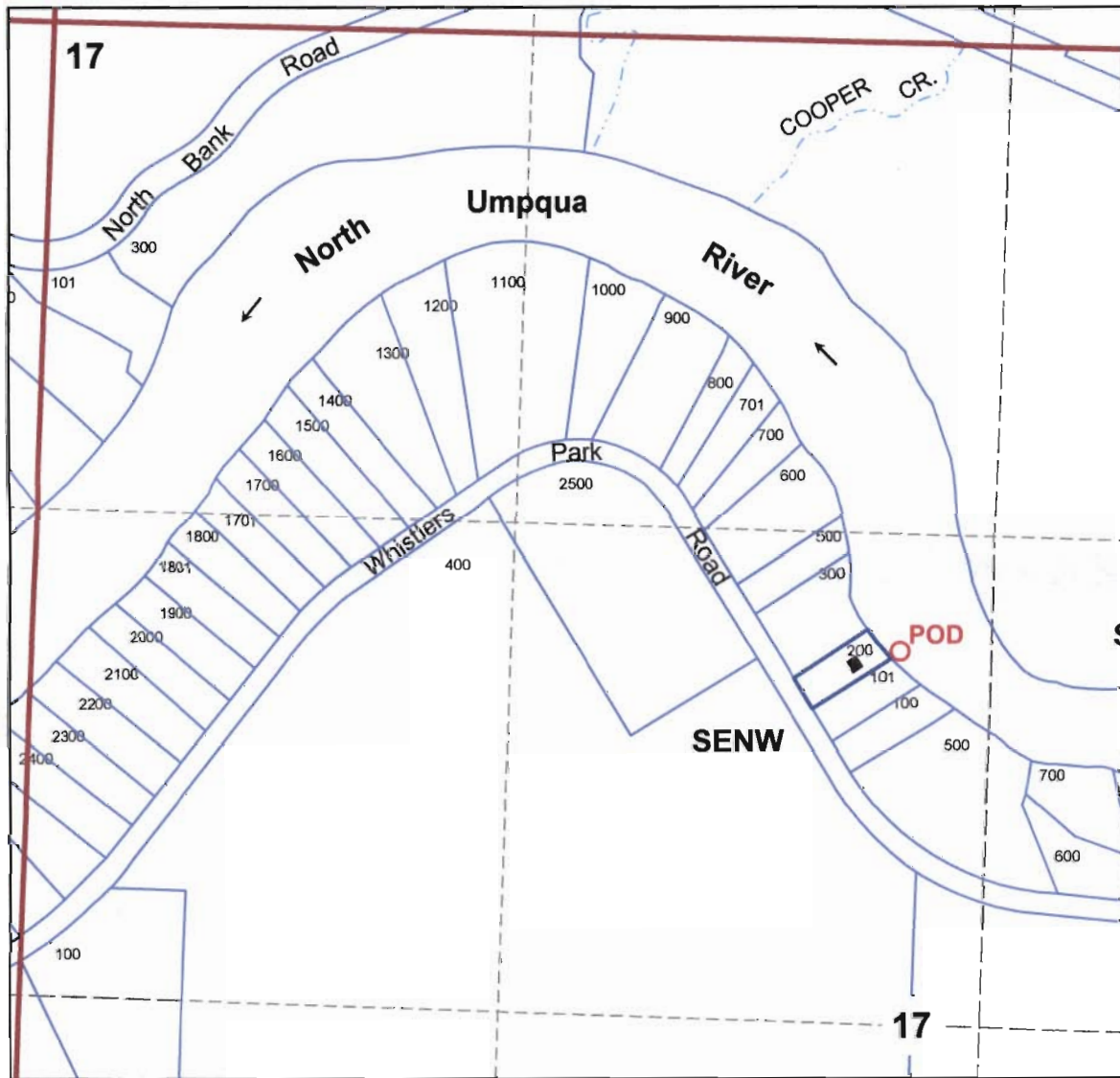
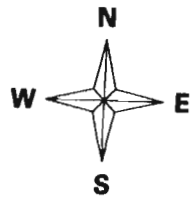


RECEIVED

OCT 14 2011

SEC.17 T.26S. R.4W. W.M.  
DOUGLAS COUNTY  
Scale 1" = 1000'

WATER RESOURCES DEPT  
SALEM, OREGON



Point of diversion is 1650 ft. south and 250 ft. west from the North Quarter Corner of Section 17.

S-87761