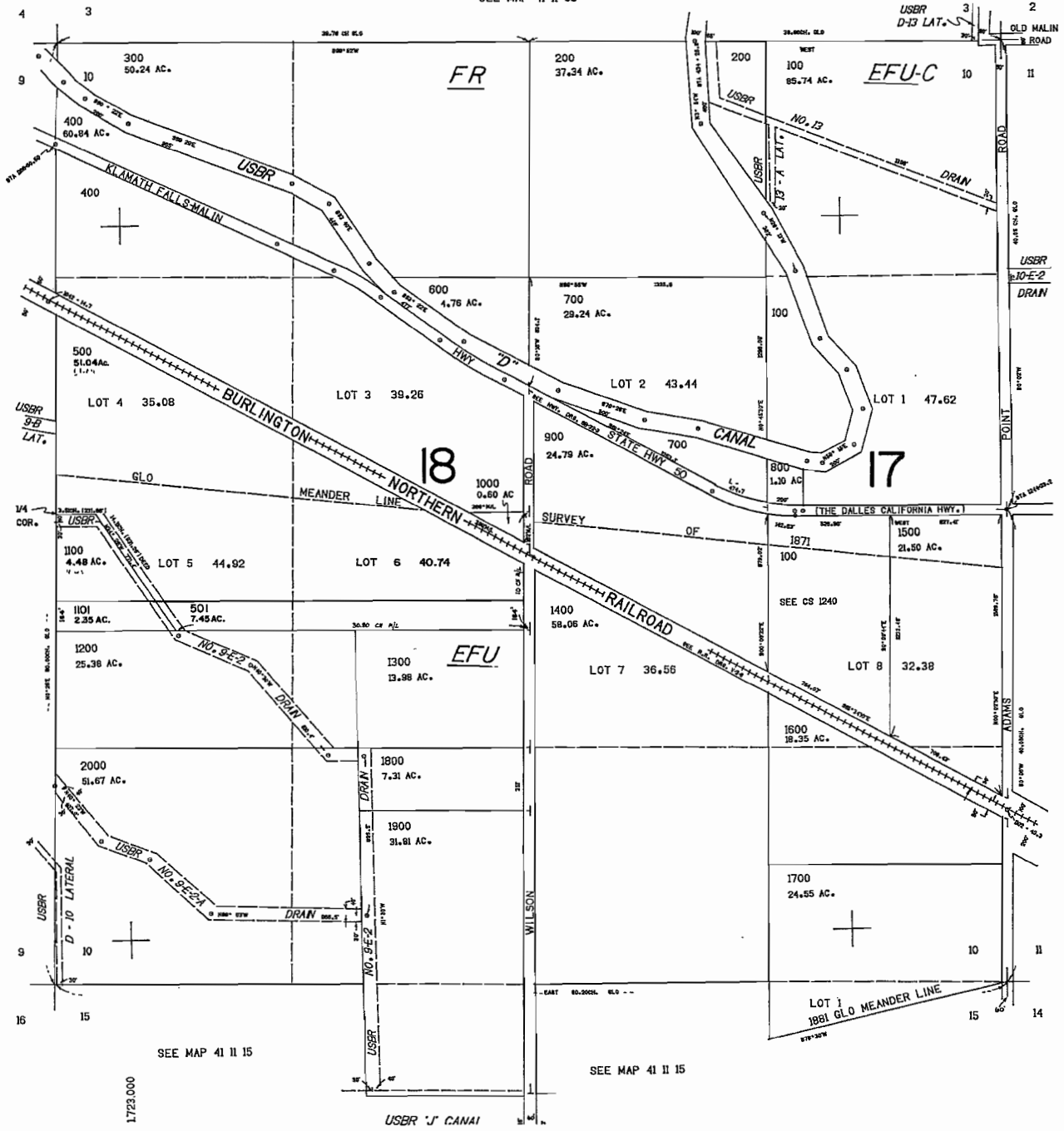


SECTION 10 T.41S. R.11E. W.M.
KLAMATH COUNTY

41 11 10

THIS MAP WAS PREPARED FOR
ASSESSMENT PURPOSE ONLY.

1"=400'
SEE MAP 41 11 03



G-17497

SEE MAP 41 11 03

SEE MAP 41 11 11

WATER RESOURCES DEPT
SALEM, OREGON

OCT 19 2011

RECEIVED

SEE MAP 41 11 15

SEE MAP 41 11 15

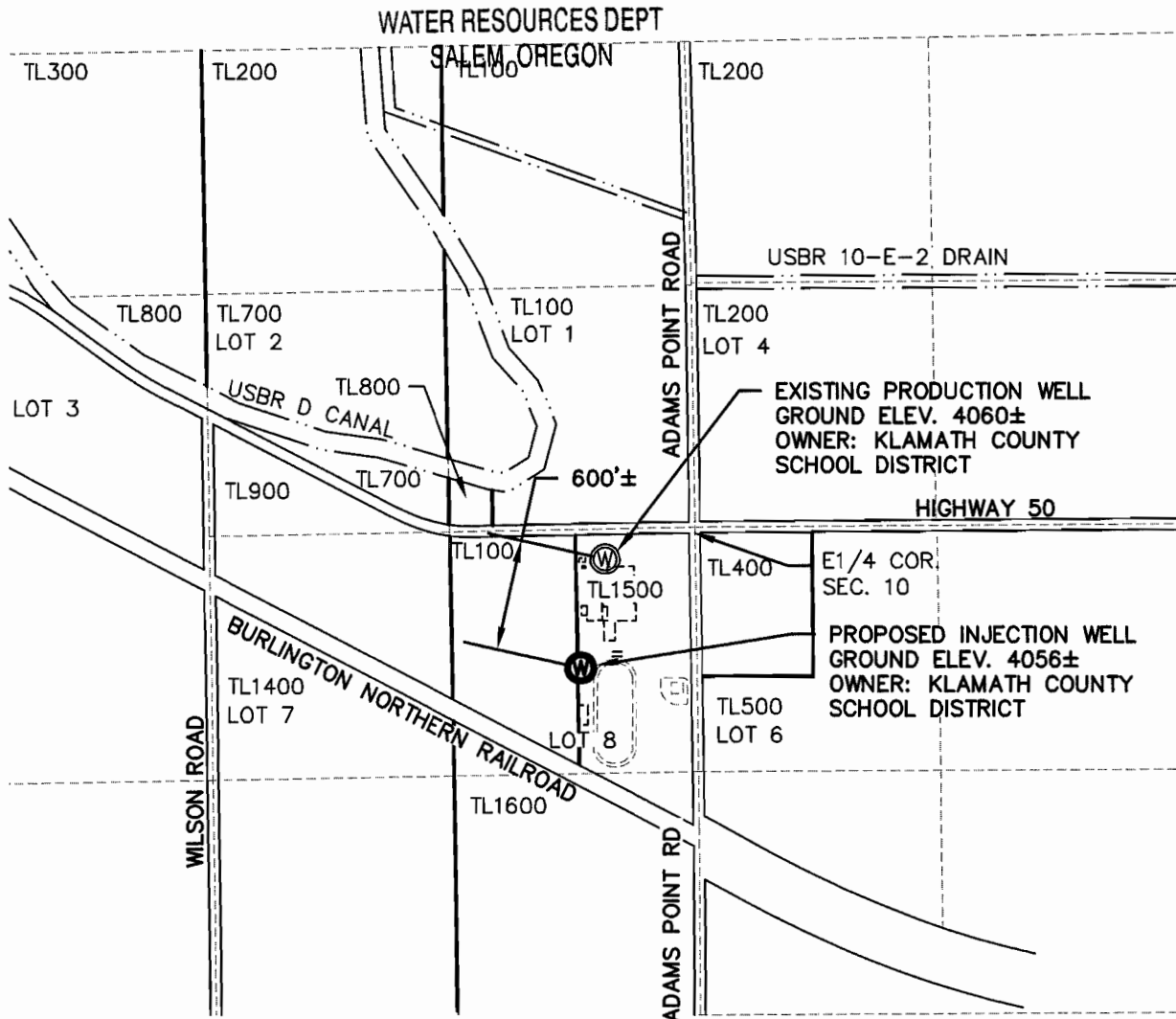
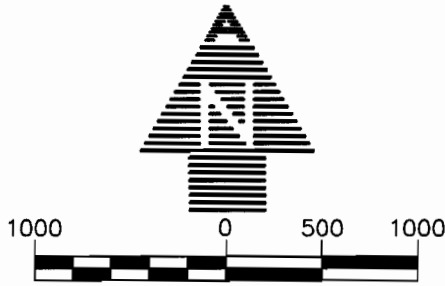
127.000

41 11 10

LOST RIVER HIGH SCHOOL GROUNDWATER APPLICATION MAP

RECEIVED NE 1/4 SE 1/4, SEC. 10
T41S, R11E, W.M.

OCT 19 2011



EXISTING PRODUCTION WELL LOCATION:
165' SOUTH AND 485' WEST OF THE
EAST 1/4 CORNER SECTION 10.

PROPOSED INJECTION WELL LOCATION:
740'± SOUTH AND 620'± WEST OF THE
EAST 1/4 CORNER SECTION 10.

LEGEND

TL1600 TAX LOT NUMBER
LOT 7 GOVERNMENT LOT
NUMBER

----- 1/4 1/4 LINE
————— TAX LOT LINE

⊙ EXISTING PRODUCTION WELL
⊙ PROPOSED INJECTION WELL

ADKINS
SINCE 1983

CONSULTING
ENGINEERS, INC.

Engineers ▲ Planners ▲ Surveyors

2950 Shasta Way · Klamath Falls, Oregon 97603 · (541) 884-4666 · FAX (541) 884-5335
Klamath Falls, Oregon

9/30/11

LRHS_Base

1122-27

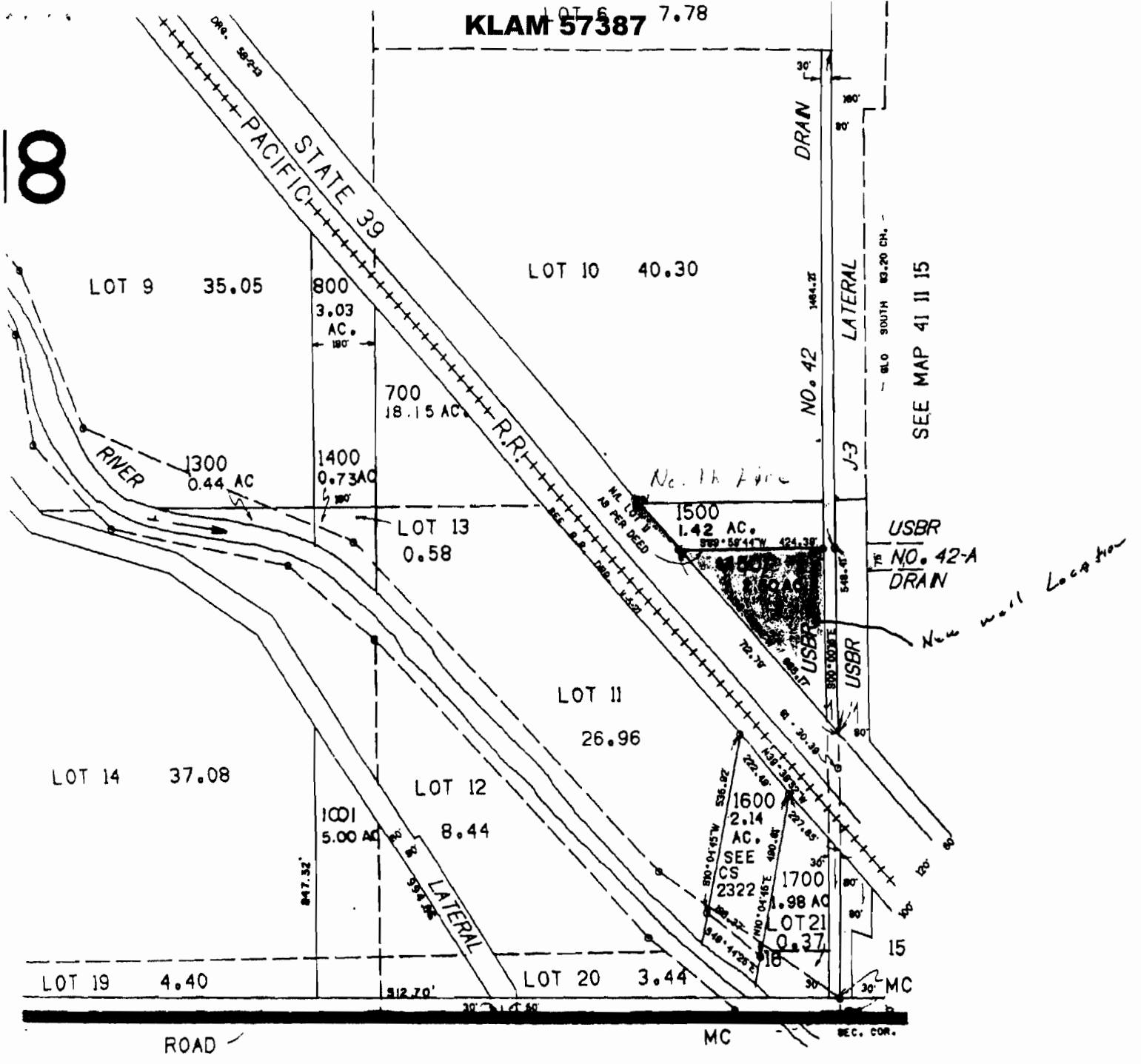
**LOST RIVER HIGH SCHOOL
GROUNDWATER
APPLICATION MAP**

KLAMATH COUNTY SCHOOL DISTRICT

KLAMATH COUNTY, OREGON

G-17497

18



R N I A



RECEIVED

122.000

JUN 07 2010

WATER RESOURCES DEPT
SALEM, OREGON

G-17497

LAND OWNER SUBMITTED MAP

41 11