

Davis: T3S R13E 0 Tax Lots 2700, 4100, 4200  
 T4S R13E 0 Tax Lots 500, 701



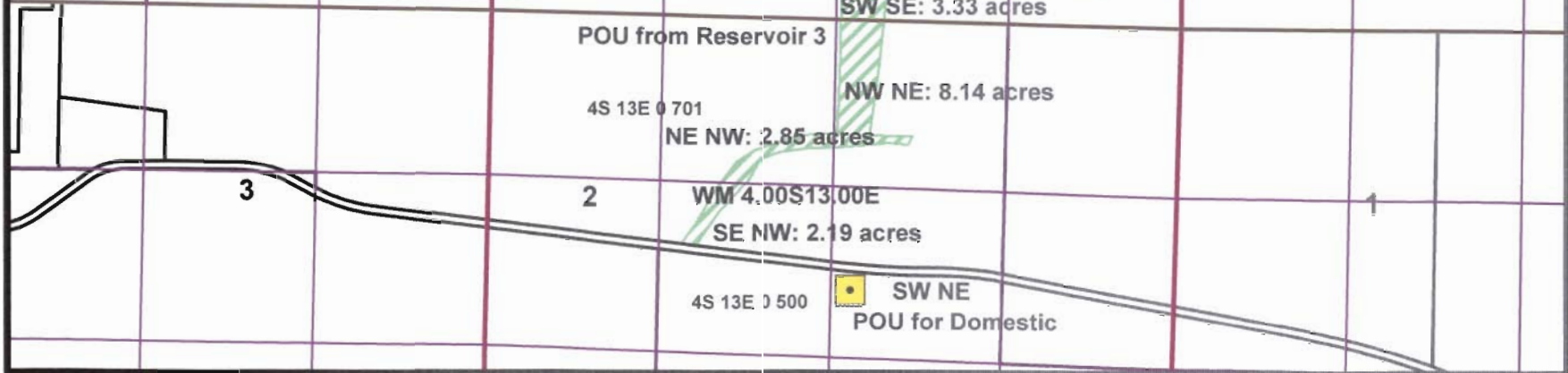
**RECEIVED**  
 NOV 03 2011  
 WATER RESOURCES DEPT  
 SALEM, OREGON

Spring 2 POD: Diversion is 351' North and 1,104' West of SE Corner Sec 26, T3S R13E WM

Reservoir 2: Centerpoint of dam is 1,221' south and 937' west of the NE Corner, Section 35, T3S R13E WM

Spring 3 POD: Diversion is 652' North and 2,226' West of SE Corner Sec 35, T3S R13E WM

Reservoir 3: Reservoir is 436' North and 2,174' West of the SE Corner, Section 35, T3S R13E WM



R-87763

Scale: 1" = 1320'

Davis: T3S R13E Sec 33 Tax Lots 100 and 400

RECEIVED

NOV 03 2011

WATER RESOURCES DEPT  
SALEM, OREGON

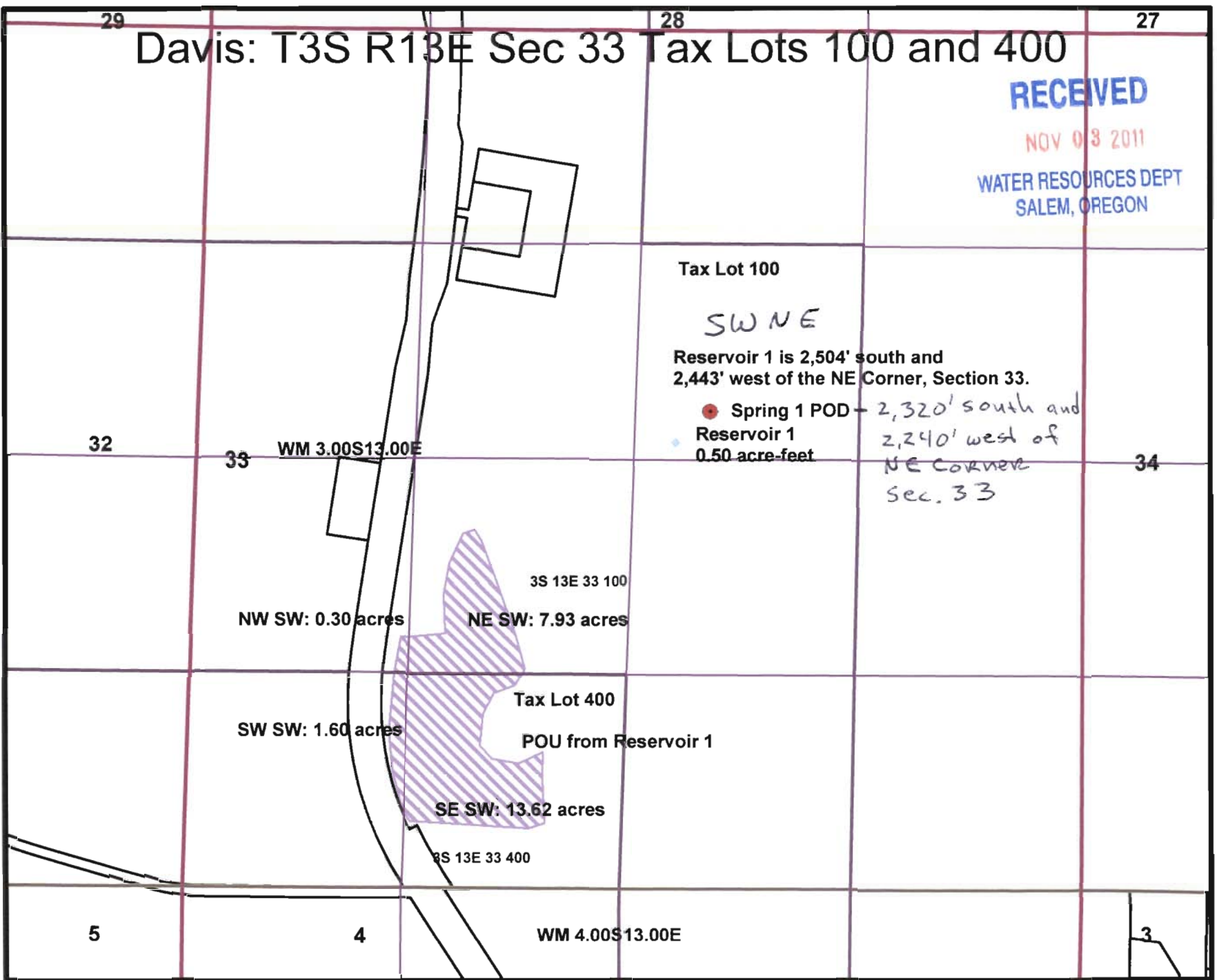


Tax Lot 100

SWNE

Reservoir 1 is 2,504' south and  
2,443' west of the NE Corner, Section 33.

- Spring 1 POD - 2,320' south and 2,240' west of NE corner Sec. 33
- Reservoir 1 0.50 acre-feet



R-87763

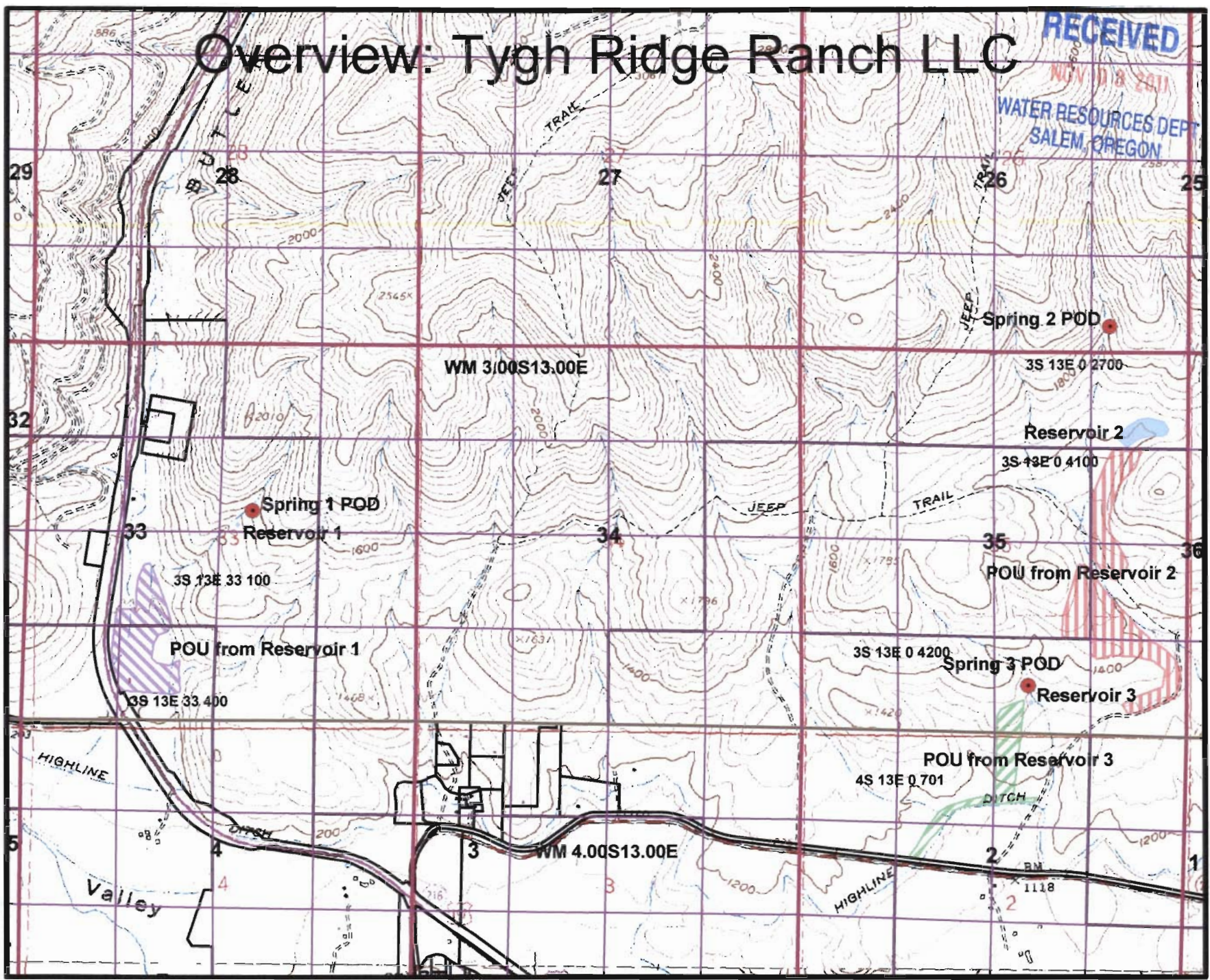
Scale: 1" = 800'



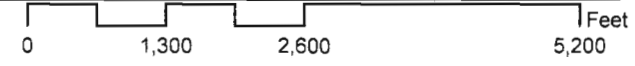
# Overview: Tygh Ridge Ranch LLC

RECEIVED

NOV 18 2011  
WATER RESOURCES DEPT  
SALEM, OREGON



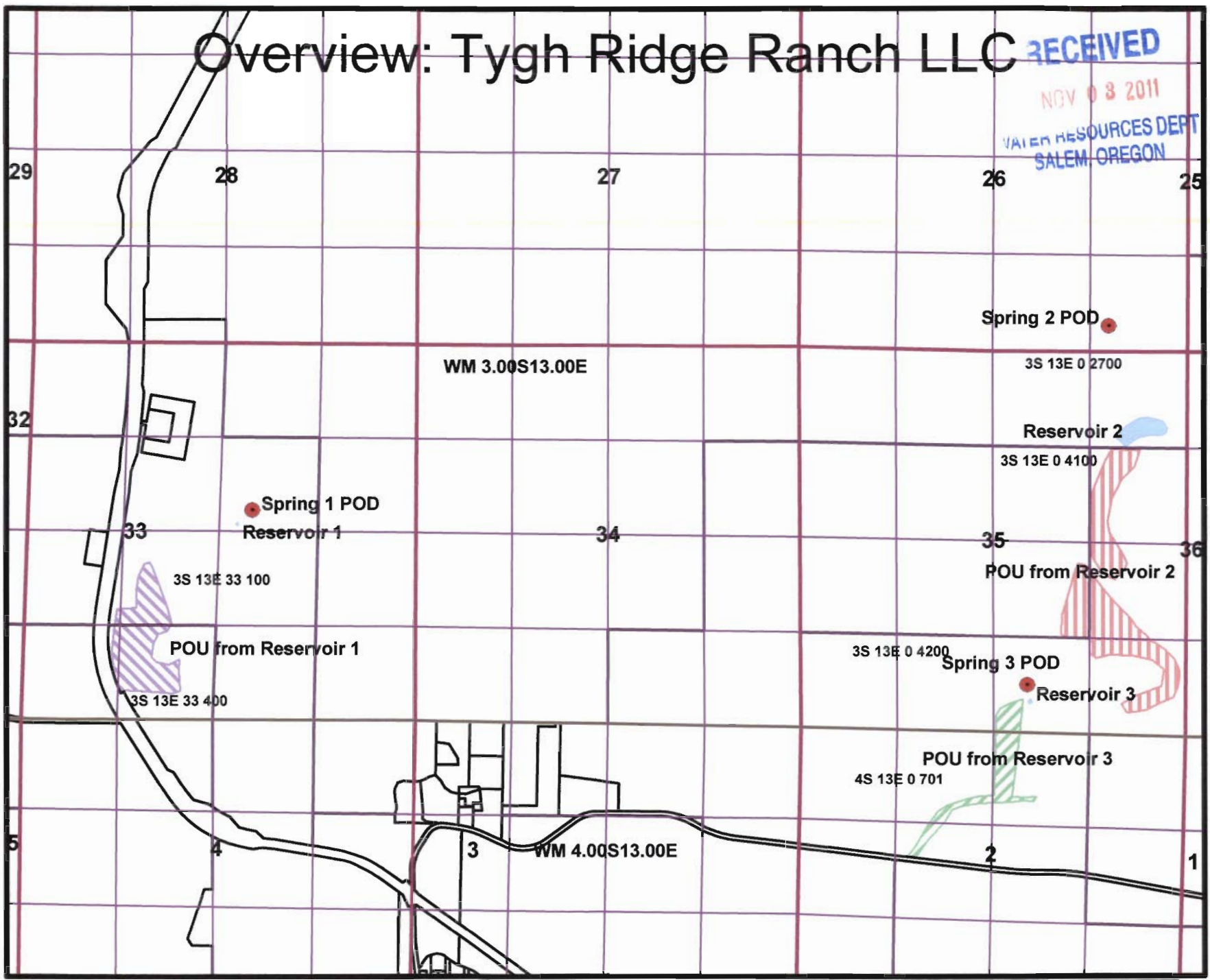
R-87763





# Overview: Tygh Ridge Ranch LLC

RECEIVED  
NOV 03 2011  
WATER RESOURCES DEPT  
SALEM, OREGON

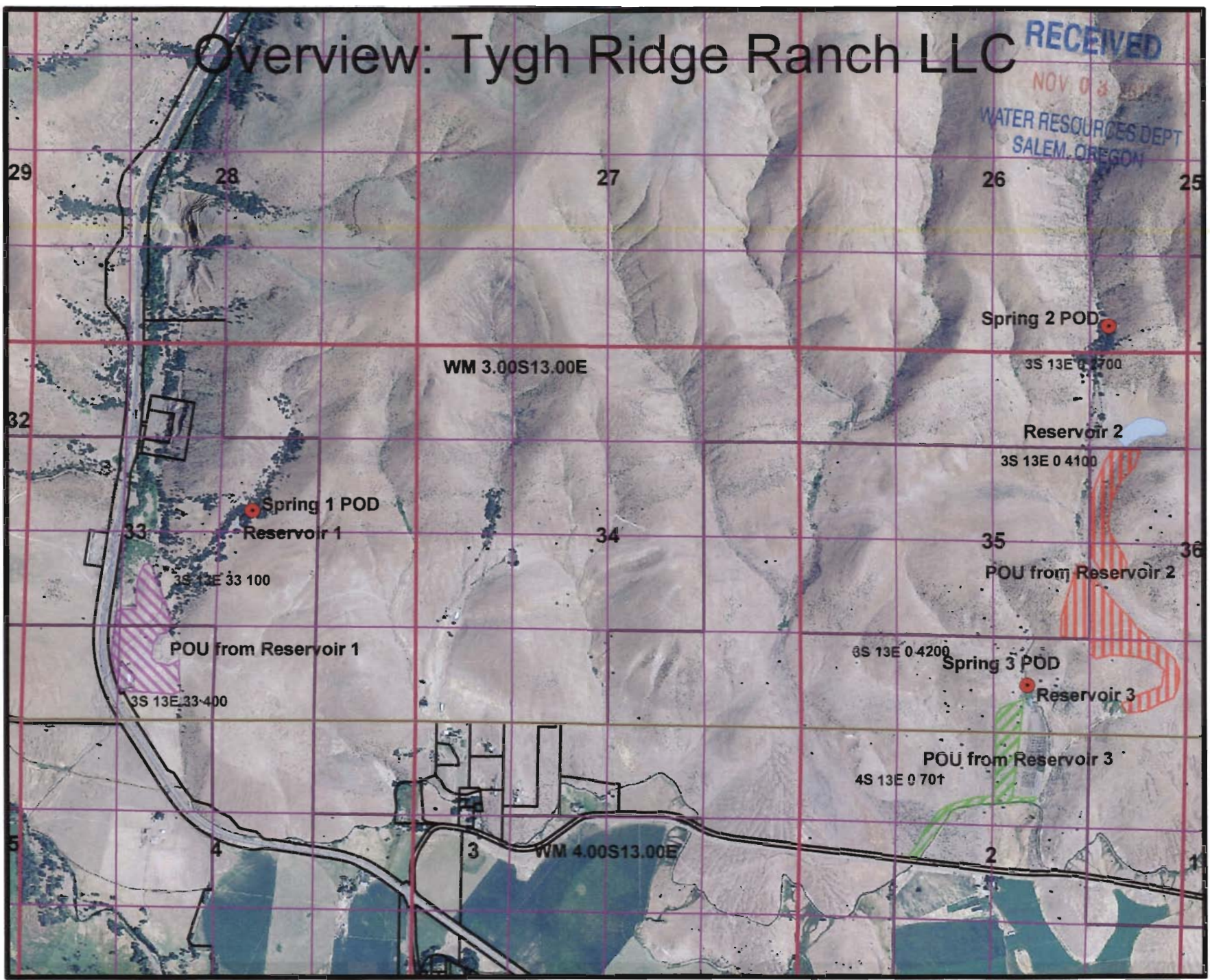


R-87763

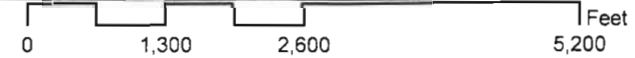


# Overview: Tygh Ridge Ranch LLC

RECEIVED  
NOV 03 2011  
WATER RESOURCES DEPT  
SALEM, OREGON



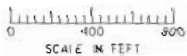
R-87763



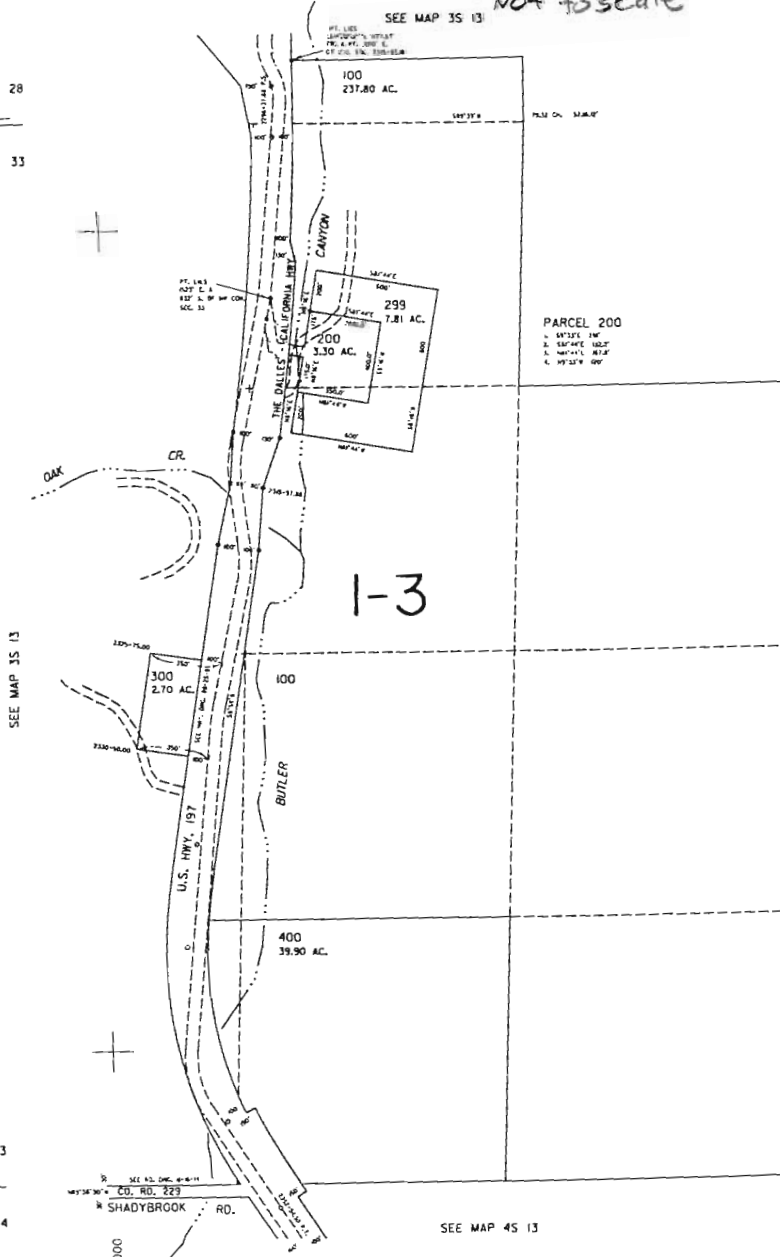
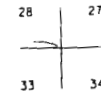
THIS MAP WAS PREPARED FOR  
ASSESSMENT PURPOSE ONLY

SECTION 33 T.3S. R.13E. W.M.  
WASCO COUNTY

3S 13 33



1" = 400' *Not to scale*



SEE MAP 35 13

SEE MAP 35 13



**RECEIVED**  
NOV 03 2011  
WATER RESOURCES DEPT  
SALEM, OREGON

1-3

R-87763

582,000

Revised 9/27/00, 9C

3S 13 33

RECEIVED

04S13E

NOV 03 2011

THIS MAP WAS PREPARED FOR ASSESSMENT PURPOSE ONLY

0 1,000 2,000 4,000 Feet

Not to scale

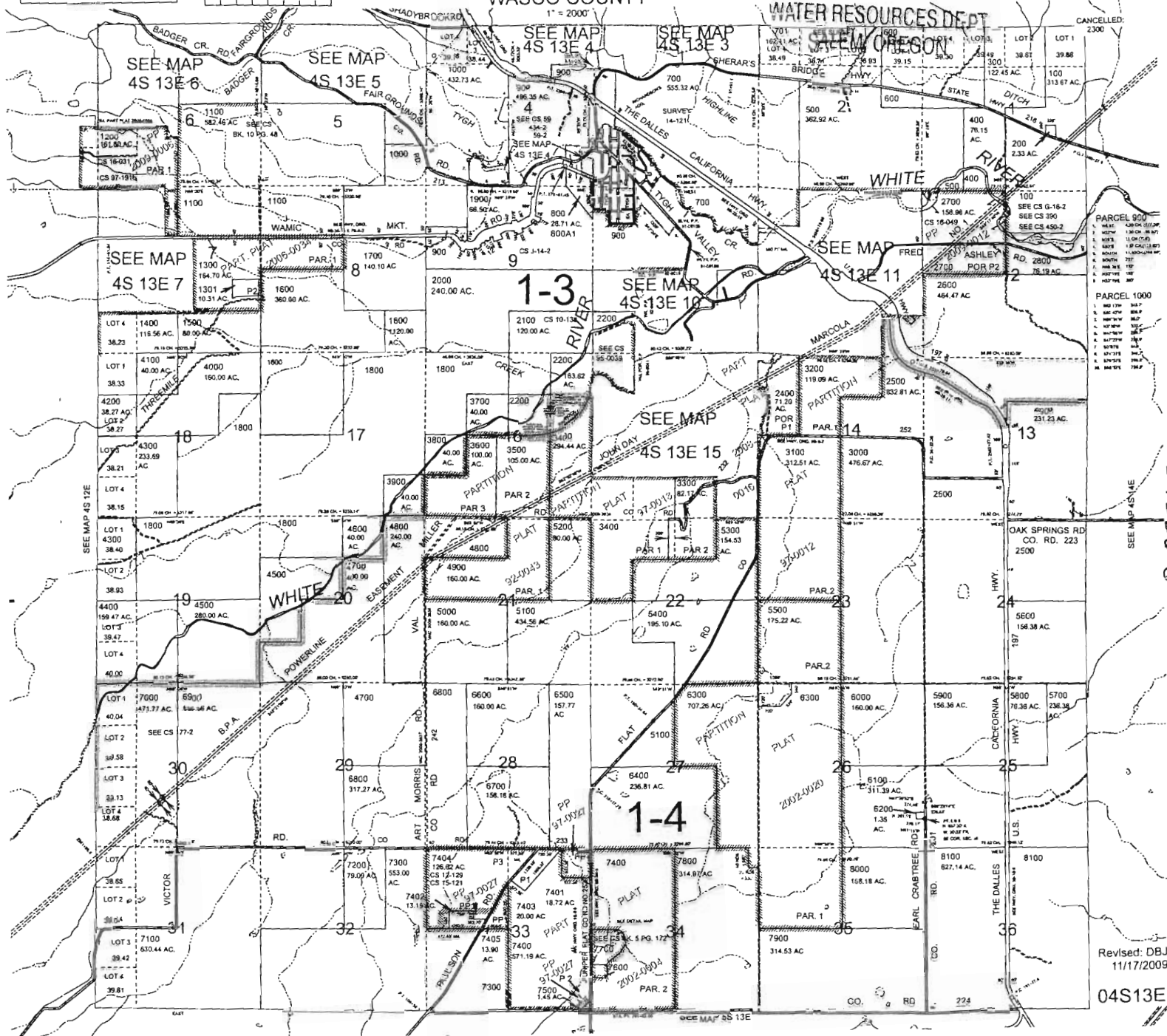
T.4S. R.13E. W.M. WASCO COUNTY

SEE MAP 4S 13E 4

SEE MAP 4S 13E 3

WATER RESOURCES DEPT SALEM OREGON

CANCELLED 2300



R-87763

Revised: DBJ 11/17/2009

04S13E



RECEIVED

NOV 03 2011

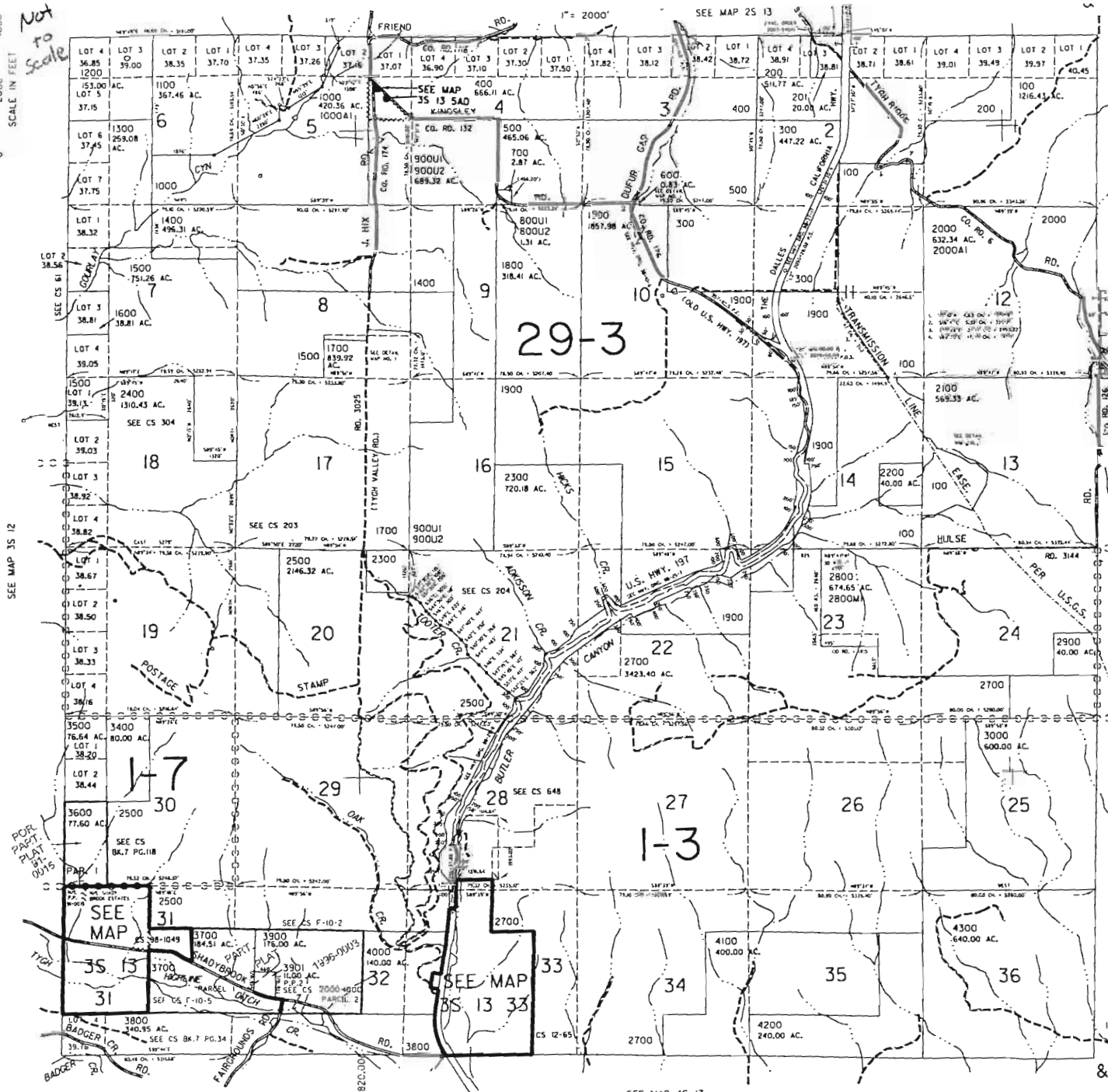
29778-2

WATER RESOURCES DEPT  
SALEM, OREGON

CANCELLED NO.  
2600  
3200  
3300  
3100

Revised  
1/29/2004, 9C  
35 13  
& INDEX

Not to Scale  
SCALE IN FEET  
0 2000 4000



SEE MAP 45 13

590.000