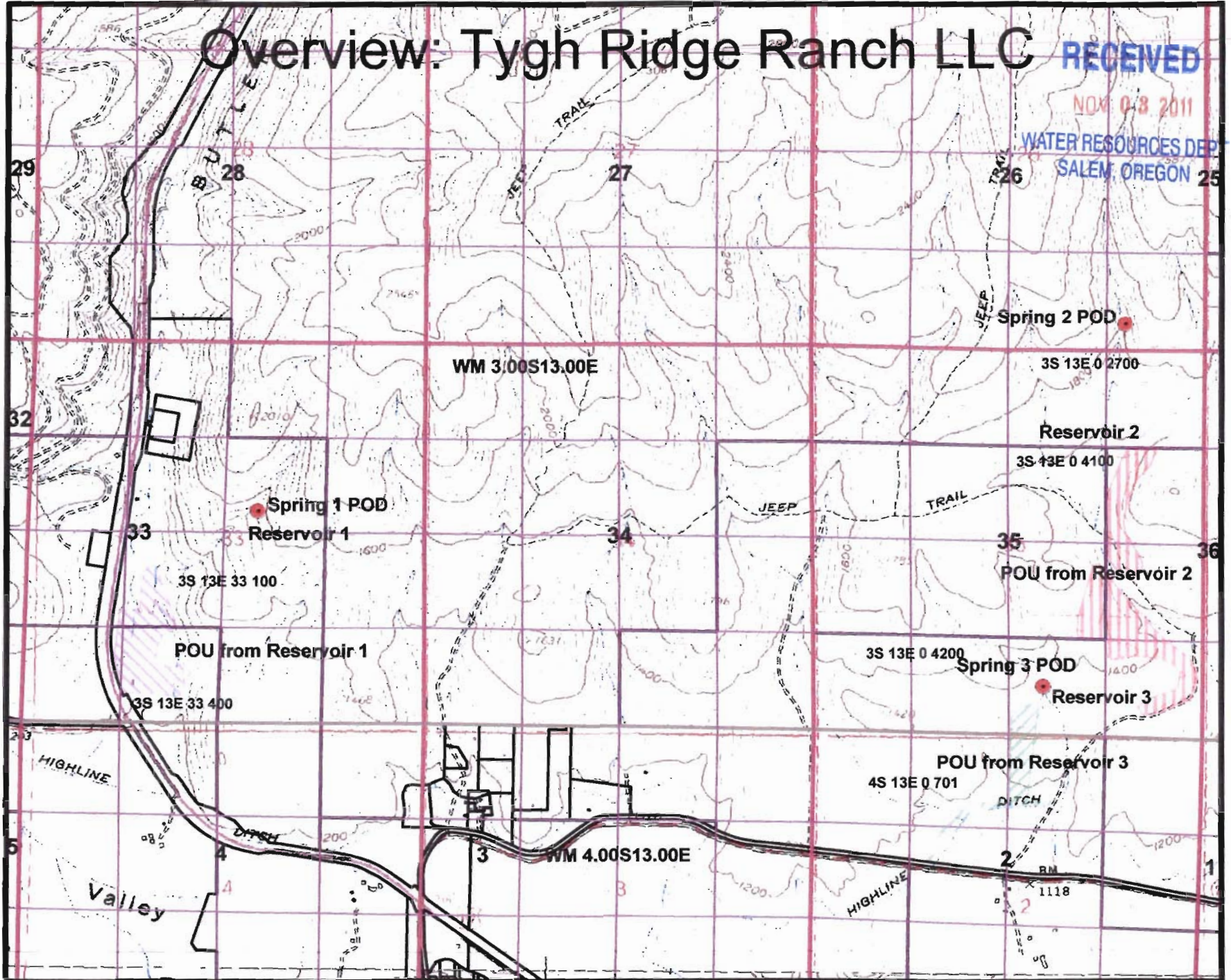


# Overview: Tygh Ridge Ranch LLC

RECEIVED

NOV 03 2011

WATER RESOURCES DEPT  
SALEM, OREGON



507764

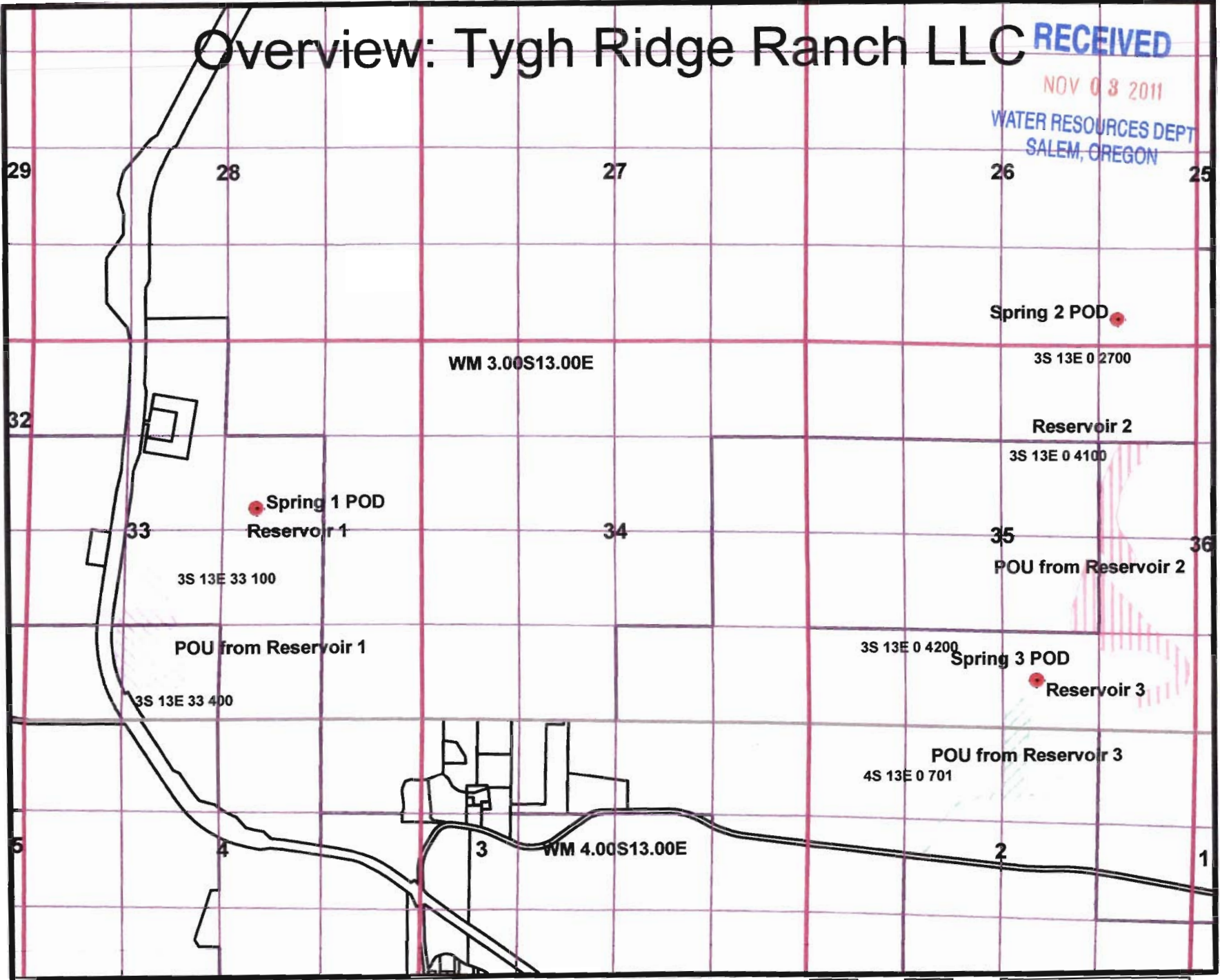
0 1,300 2,600 5,200 Feet

# Overview: Tygh Ridge Ranch LLC

RECEIVED

NOV 03 2011

WATER RESOURCES DEPT  
SALEM, OREGON



29

28

27

26

25

32

WM 3.00S13.00E

3S 13E 0 2700

Spring 2 POD

Reservoir 2

3S 13E 0 4100

33

Spring 1 POD

Reservoir 1

34

35

POU from Reservoir 2

3S 13E 33 100

POU from Reservoir 1

3S 13E 0 4200

Spring 3 POD

Reservoir 3

3S 13E 33 400

POU from Reservoir 3

4S 13E 0 701

5

4

3

WM 4.00S13.00E

2

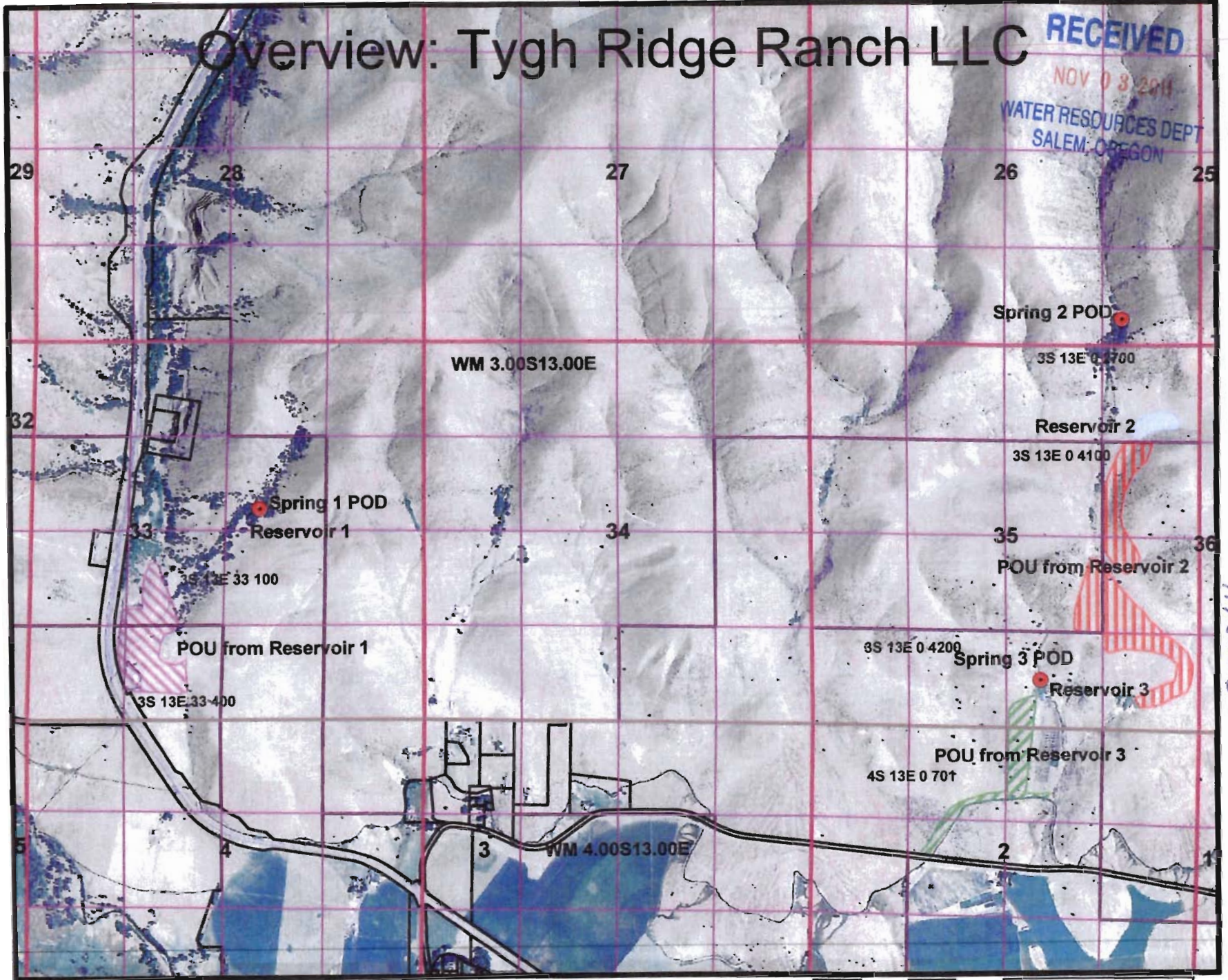
1

0 1,300 2,600 5,200 Feet

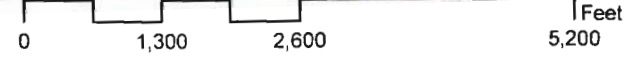
5-87764

# Overview: Tygh Ridge Ranch LLC

RECEIVED  
NOV 03 2011  
WATER RESOURCES DEPT  
SALEM, OREGON



1977-05



Davis: T3S R13E 0 Tax Lots 2700, 4100, 4200

27

T4S R13E 0 Tax Lots 500, 701

25

Spring 2 POD: Diversion is 351' North and 1,104' West of SE Corner Sec 26, T3S R13E WM

Reservoir 2: Centerpoint of dam is 1,221' south and 937' west of the NE Corner, Section 35, T3S R13E WM

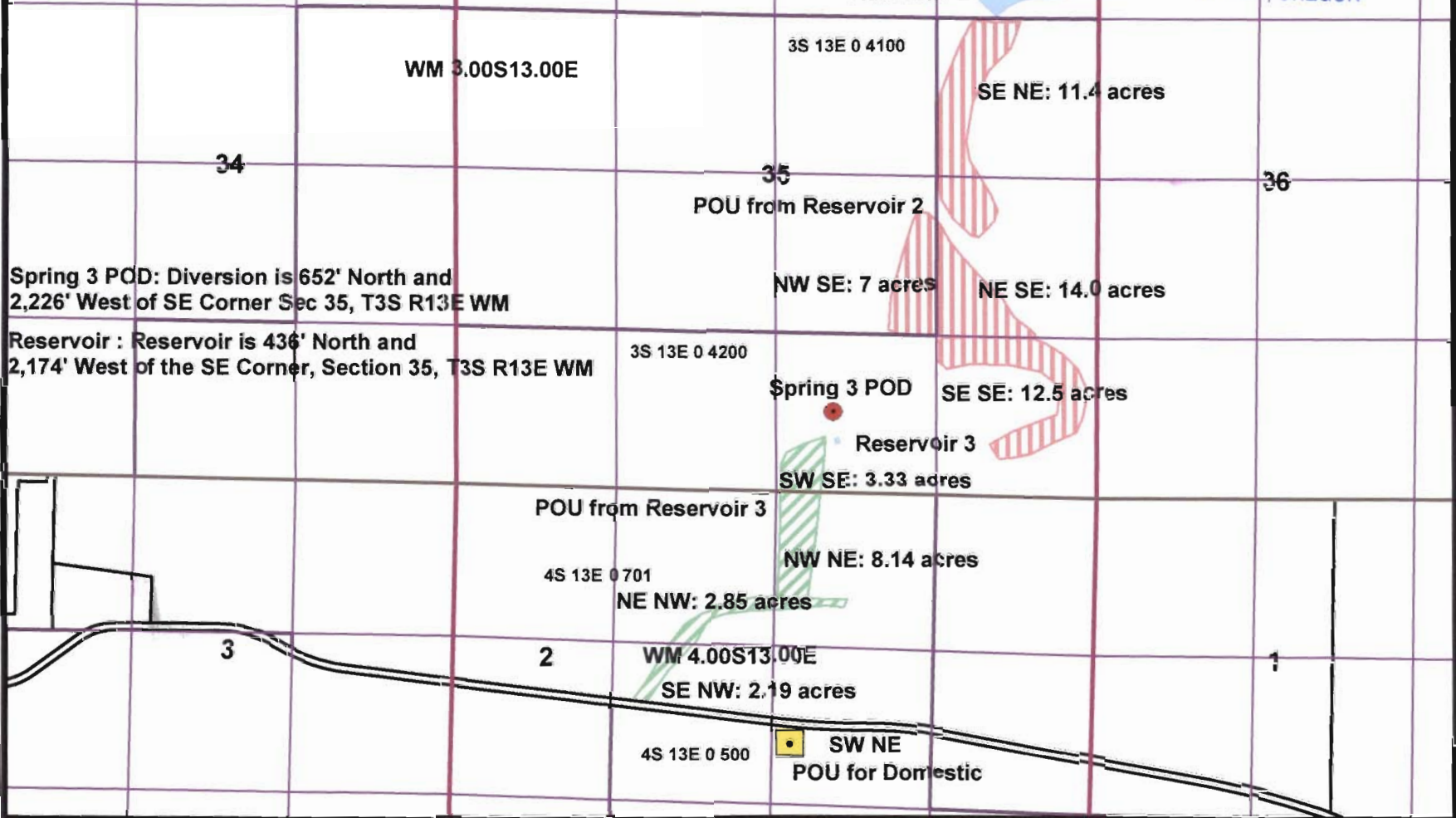
Spring 3 POD: Diversion is 652' North and 2,226' West of SE Corner Sec 35, T3S R13E WM

Reservoir : Reservoir is 436' North and 2,174' West of the SE Corner, Section 35, T3S R13E WM

RECEIVED

NOV 03 2011

WATER RESOURCES DEPT  
SALEM, OREGON



WM 3.00S13.00E

3S 13E 0 2700

NE NE

Reservoir 2

3S 13E 0 4100

SE NE: 11.4 acres

34

35

POU from Reservoir 2

36

NW SE: 7 acres

NE SE: 14.0 acres

3S 13E 0 4200

Spring 3 POD

SE SE: 12.5 acres

Reservoir 3

SW SE: 3.33 acres

POU from Reservoir 3

4S 13E 0 701

NW NE: 8.14 acres

NE NW: 2.85 acres

3

2

WM 4.00S13.00E

SE NW: 2.19 acres

1

4S 13E 0 500

SW NE  
POU for Domestic

5-87764

Scale: 1" = 1320'

# Davis: T3S R13E Sec 33 Tax Lots 100 and 400

RECEIVED

NOV 03 2011

WATER RESOURCES DEPT  
SALEM, OREGON

Tax Lot 100

SW NE

Reservoir 1 is 2,504' south and  
2,443' west of the NE Corner, Section 33.

- Spring 1 POD - 2,320' South and  
2,240' west of  
NE Corner  
Sec 33
- Reservoir 1  
0.50 acre-feet

WM 3.00S13.00E

3S 13E 33 100

NW SW: 0.30 acres

NE SW: 7.93 acres

Tax Lot 400

SW SW: 1.60 acres

POU from Reservoir 1

SE SW: 13.62 acres

3S 13E 33 400

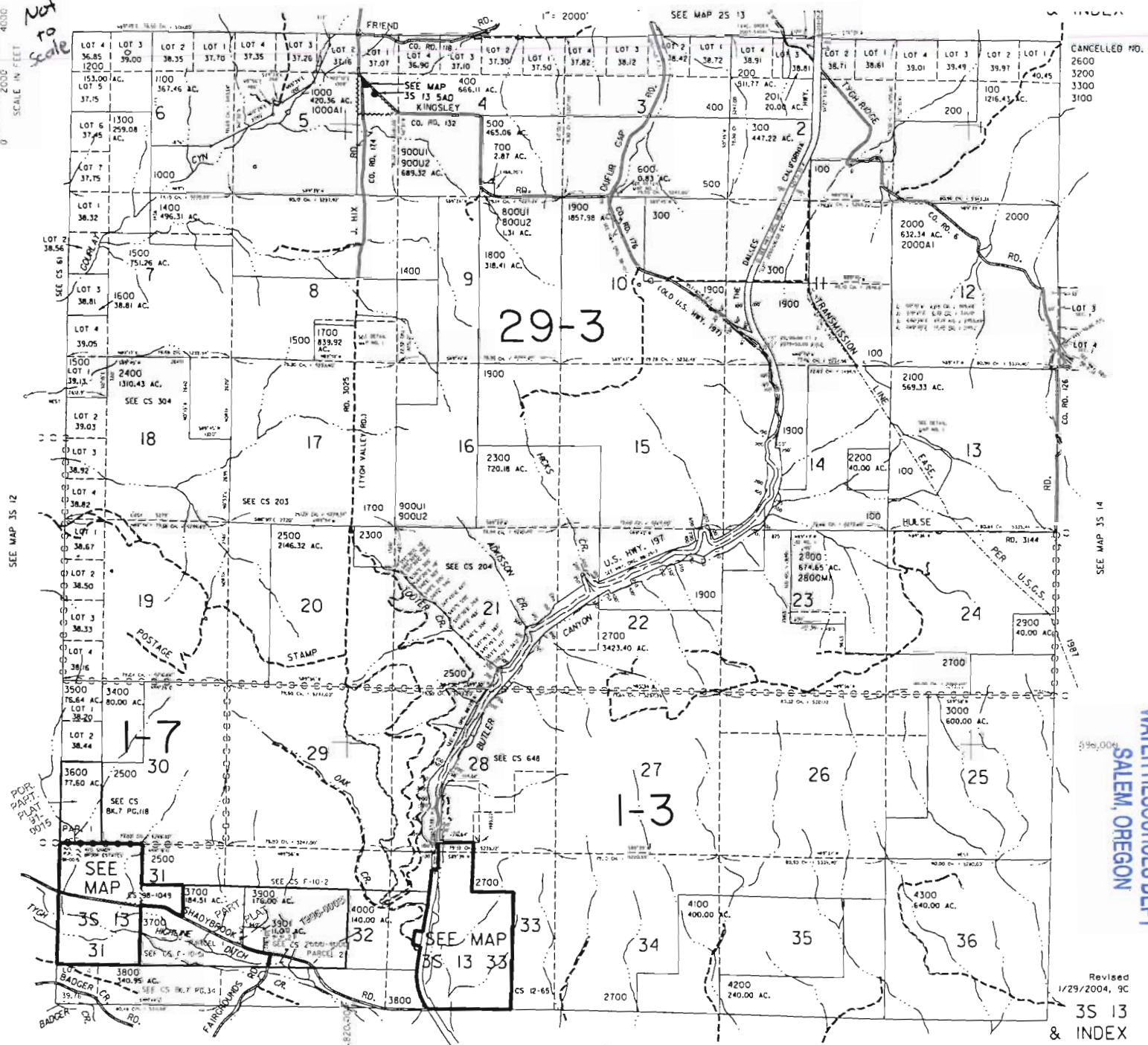
WM 4.00S13.00E

5-87764

Scale: 1" = 800'

SCALE IN FEET  
2000  
4000

Not to Scale



CANCELLED NO.  
2600  
3200  
3300  
3100

SEE MAP 35 12

SEE MAP 35 14

SEE MAP 45 13

WATER RESOURCES DEPT  
SALEM, OREGON

1977-8-5

NOV 03 2011

RECEIVED

Revised  
1/29/2004, 9C  
35 13  
& INDEX

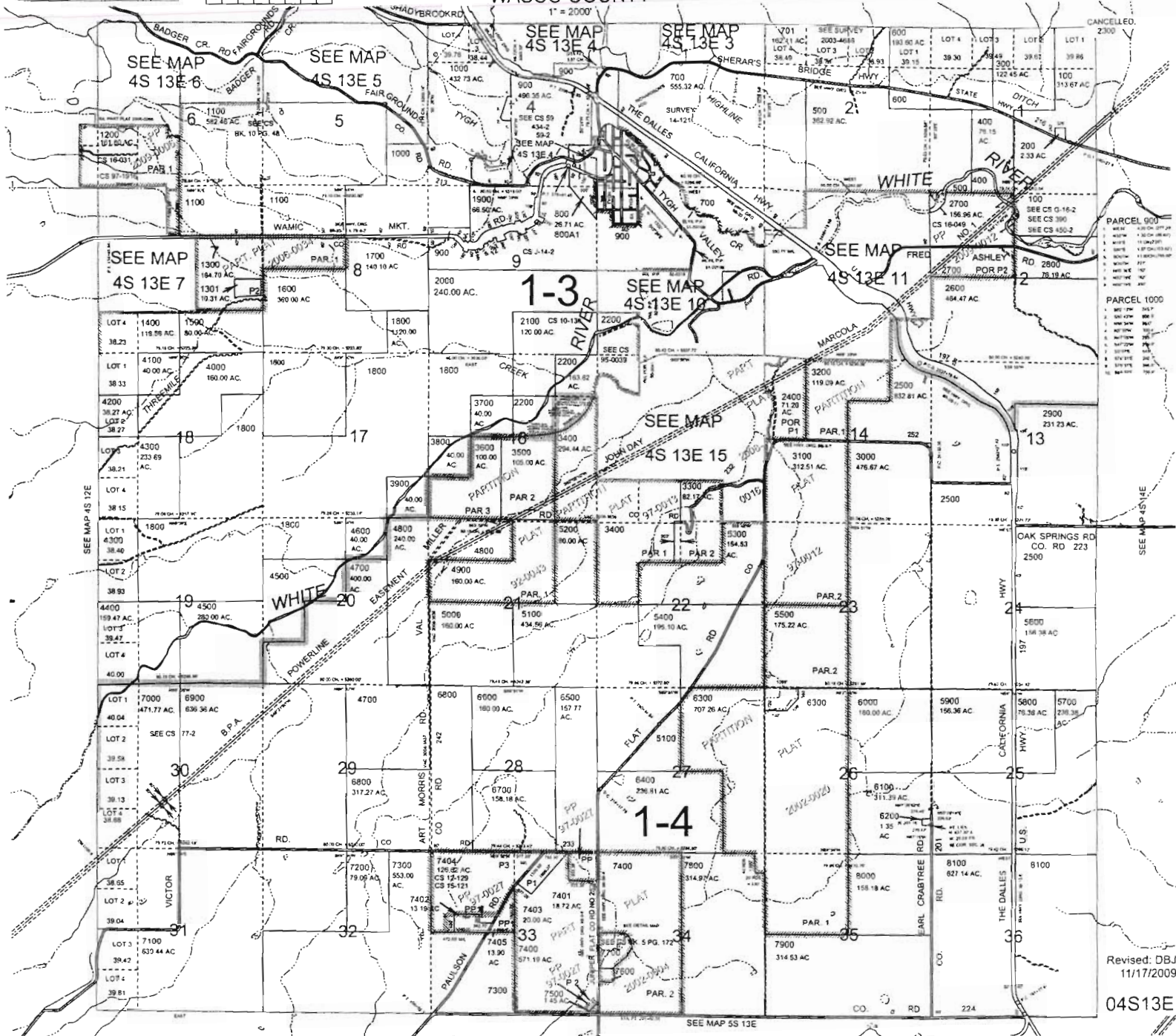
THIS MAP WAS PREPARED FOR ASSESSMENT PURPOSE ONLY

Not to scale

T.4S. R.13E. W.M. WASCO COUNTY

04S13E

0 1,000 2,000 4,000 Feet  
1" = 2000'



1978-5

RECEIVED

NOV 03 2011

WATER RESOURCES DEPT  
SALEM, OREGON

Revised: DBJ  
11/17/2009

04S13E

RECEIVED  
NOV 08 2011  
WATER RESOURCES DEPT  
SALEM, OREGON

h977485

THIS MAP WAS PREPARED FOR  
ASSESSMENT PURPOSE ONLY



29 28  
32 33

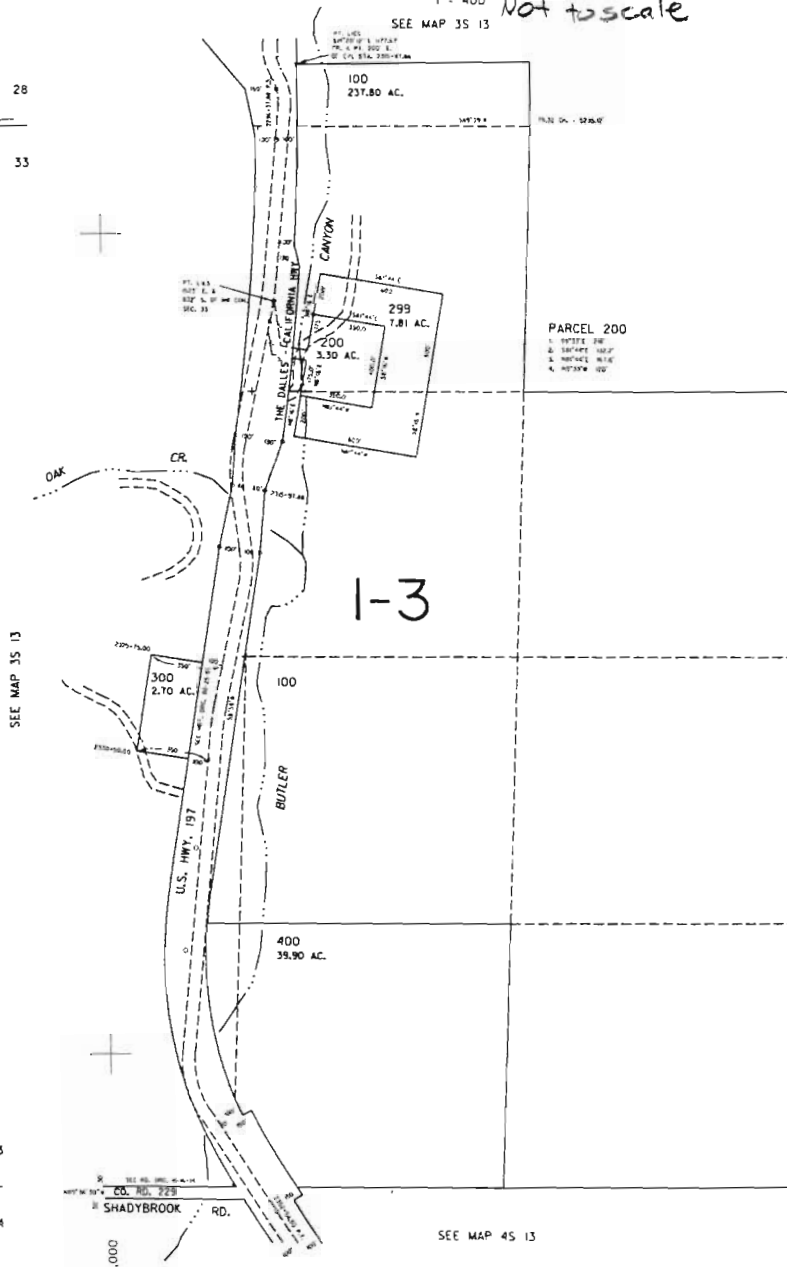
SECTION 33 T.3S. R.13E. W.M.  
WASCO COUNTY

1" = 400' *Not to scale*

SEE MAP 35 13

3S 13 33

28 27  
33 34



SEE MAP 35 13

SEE MAP 35 13

32 33  
5 4

33 34  
4 3

SEE MAP 45 13

Revised 9/27/00, 9C

3S 13 33

1:872,000

582,000