

T 26 S; R 33 E

T 26 S; R 34 E

NESE

NWSW

NESW

1

6

6.22 AC

SESE

SWSW

SESW

TL 301

TL 1701

TL 400

NENE

NWNW

NENW

5.82 AC

HARN 1414 WELL LOCATION:
1,295' SOUTH & 900' EAST
FROM THE NW CORNER
SEC 7, T26S R34E, W.M.

12

7

12.29 AC

25.61 AC

SENE

SWNW


SENW

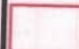
RECEIVED


NOV 14 2011

WATER RESOURCES DEPT
SALEM, OREGON

Map to Accompany Water Right
Application in the Name of
Jeffery T & Erin Maupin

 Proposed Area to be Irrigated

 Taxlot Boundaries

 Well Location

N



1" = 330'

TR 30 SEP 2011

G-17505

THIS MAP WAS PREPARED FOR ASSESSMENT PURPOSE ONLY

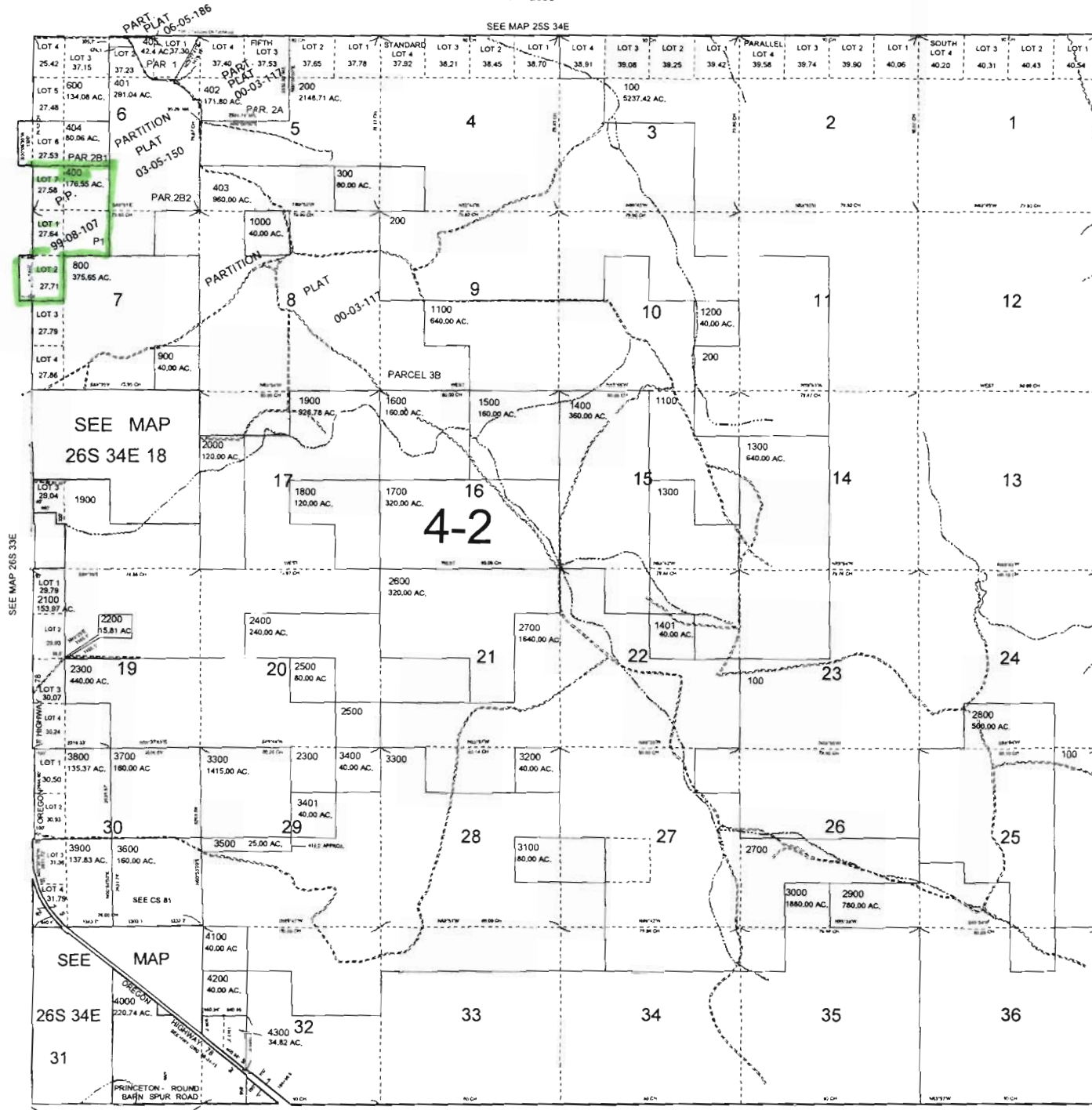
T.26S. R.34E. W.M.
HARNEY COUNTY
1" = 2000'

26S 34E
& INDEX



RECEIVED
NOV 14 2011
WATER RESOURCES DEPT
SALEM, OREGON

G-17505



CANCELLED NO.
500
700
4001

PRINTED ON
May 06, 2008
26S 34E
& INDEX