

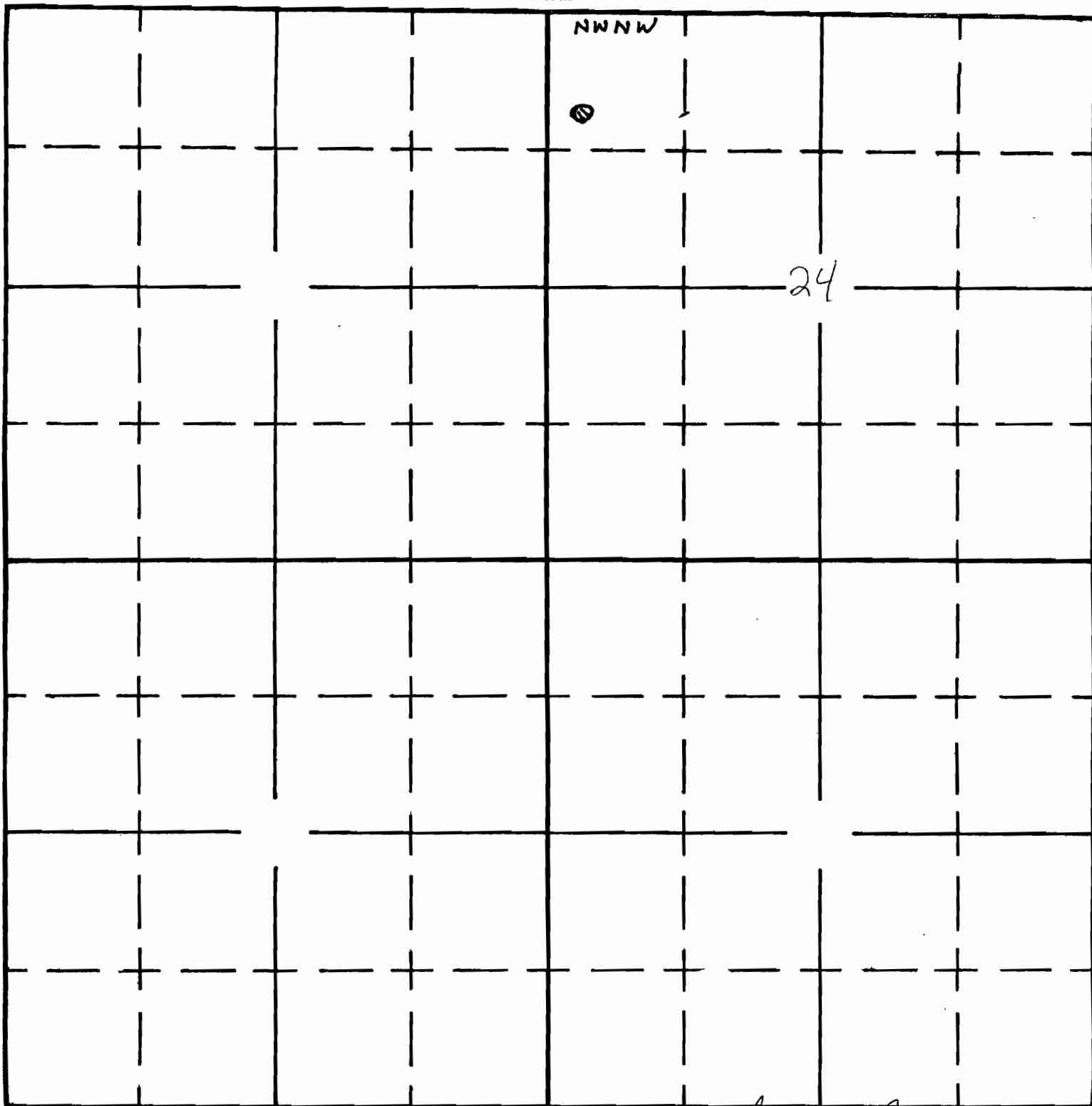
SECTION

See attached plot.

1 inch = 1320'

TOWNSHIP 9S, RANGE 3W, W. M.

North Tax lot 300



R-87767

552' South

188' East

from NW corner section 24

[Handwritten Signature] 11/9/11

NO 2117

OFFICE OF THE
SARAH J. HARRIS

LEGEND

LINE TYPES

- TAX LOT BOUNDARY OLD PROPERTY LINE
- ROAD RIGHT-OF-WAY VACATED RIGHT-OF-WAY
- RAILROAD RAILROAD RIGHT-OF-WAY
- STREAM, LAKE, ETC. STREAM, LAKE, ETC.
- TAX LOT BOUNDARY NON-BOUNDARY
- SUBDIVISION BOUNDARY PARTITION PLAT HDY.
- TAX CODE BOUNDARY EASEMENT

SYMBOL TYPES

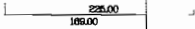
- DLC
- CONTROL POINTS
- SURVEY MONUMENTS
- G.L.O. CORNERS
- SECTION 1/4 SEC 1/16 SEC
-

NUMBERS

TAX CODE NO.
000 00 00 0

ACREAGE - ALL ACREAGES EXCLUDE ANY PORTION THAT MAY LIE WITHIN THE INDICATED PUBLIC RIGHT OF WAYS.

TICK MARKS - WHEN A TICK MARK IS INDICATED ON THE EXTENSION OF A LINE, THEN THE DIMENSION GOES TO THE TICK MARK. GENERALLY THIS IS USED WHEN DIMENSIONS GO INTO PUBLIC RIGHT OF WAYS.



ARROWS ARE USED WITH DIMENSIONS IN AREAS OF GREATER COMPLEXITY.

NOTICE: This map was created for Assessor's Office use ONLY.



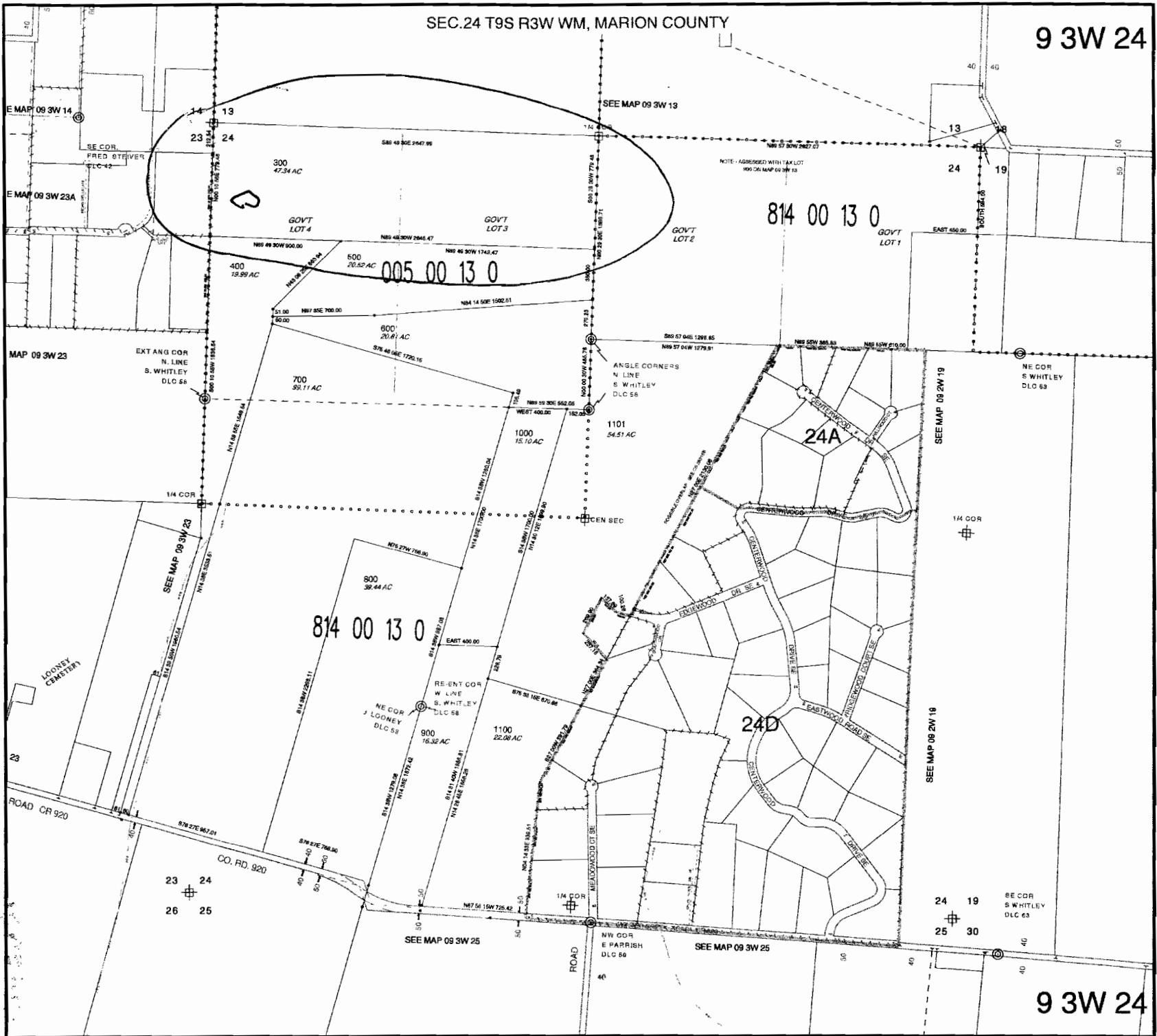
SCALE 1" = 400'
or 1:4800

Plot file created: August 16, 2007
\\simg009w24\tr\app\l...

R-87767

SEC.24 T9S R3W WM, MARION COUNTY

9 3W 24



9 3W 24