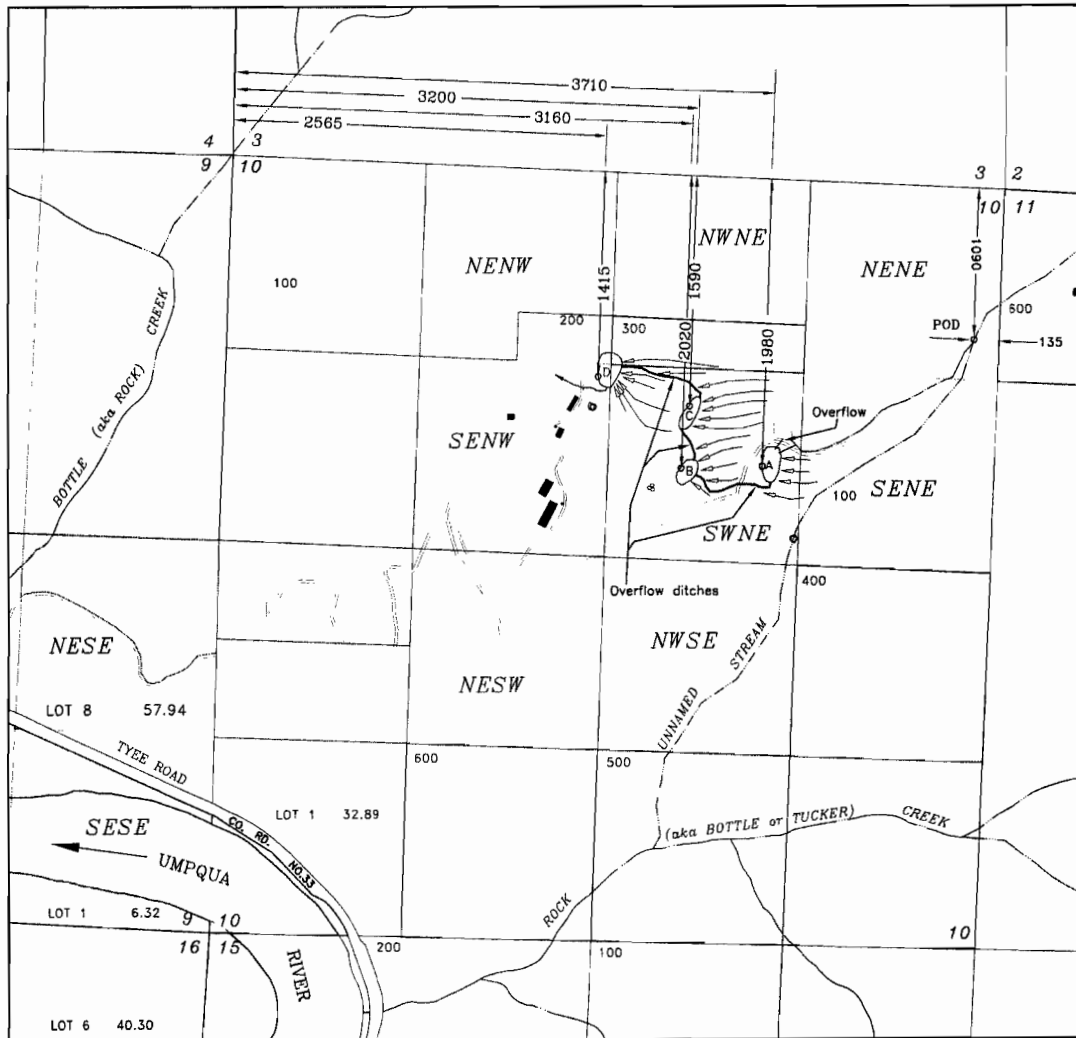


APPLICATION TO STORE WATER  
 IN 4 RESERVOIRS IN THE NAME OF:  
 KIRPAL LIGHT SATSANG, INC.  
 TOWNSHIP 25 SOUTH, RANGE 7 WEST, W.M.  
 DOUGLAS COUNTY OREGON

**RECEIVED**

NOV 22 2011

WATER RESOURCES DEPT  
 SALEM, OREGON



USE OF WATER - MULTI-PURPOSE

Scale  
 1 inch = 1320 feet

**A** Reservoir identification

◦ Location of outlets in reservoirs & pod for Unnamed Stream

For purpose of locating POD's & outlets, perpendicular directions are referenced from points of beginning (NW & NE COR Section 10) extending along section boundary lines

Runoff - No Channel

Reservoirs are connected via overflow ditches & pipelines so that water collected in upper reservoirs drains to lower reservoirs

This map is not intended to provide legal dimensions or locations of property ownership lines

Base Map: Douglas County GIS  
 2005 FSA Aerial Photos  
 USGS Quadrangle

JORDAN ENGINEERING  
 460 JORDAN LANE  
 ROSEBURG, OR 97471  
 (541) 673-1931

7/28/2011 n.e.d.

R-87768

IN 4 RESERVOIRS IN THE NAME OF:

RECE

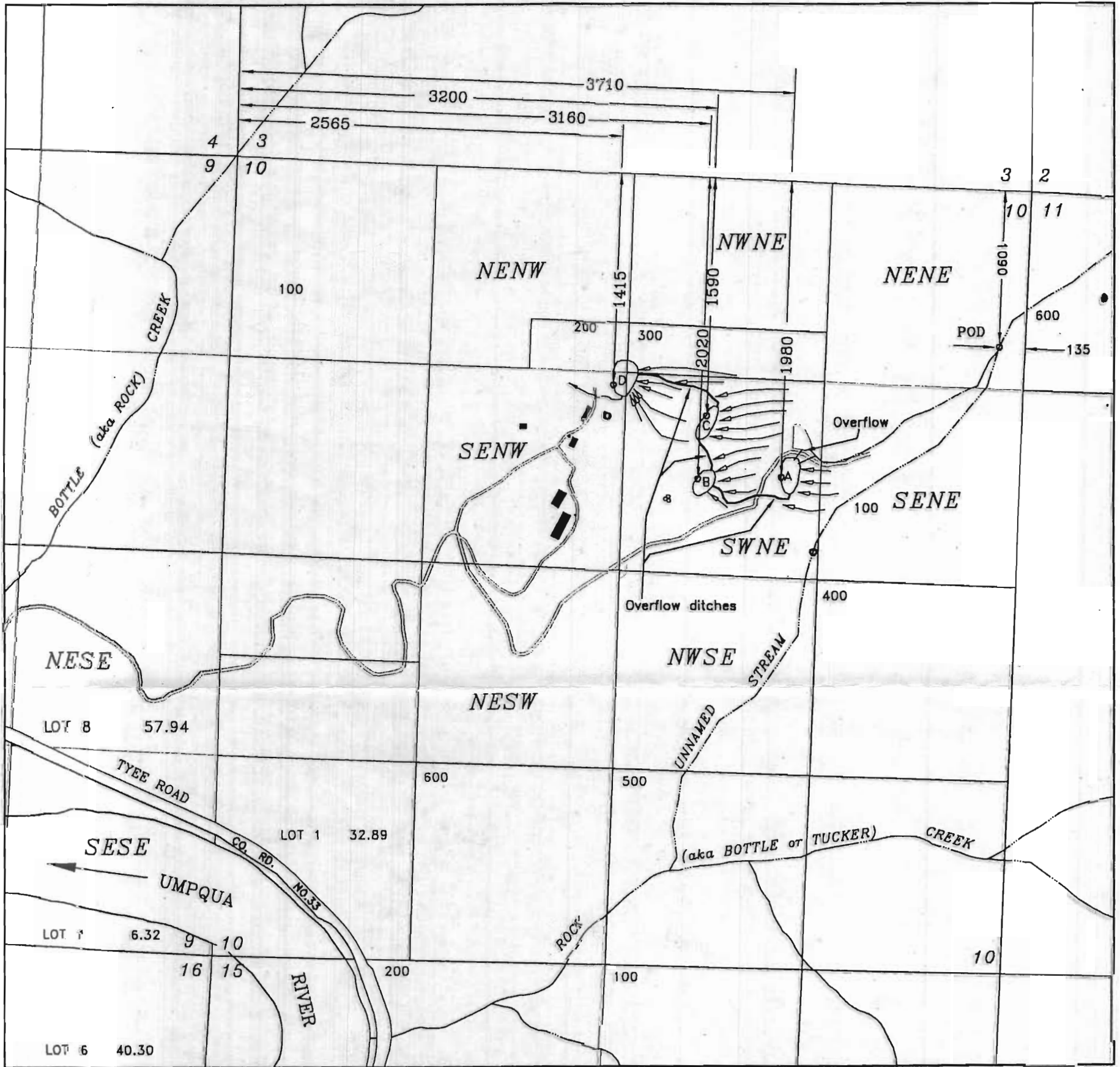
KIRPAL LIGHT SATSANG, INC.

NOV 2

TOWNSHIP 25 SOUTH, RANGE 7 WEST, W.M.

WATER RESOU  
SALEM, OF

DOUGLAS COUNTY OREGON



NORTH

USE OF WATER - MULTI-PURPOSE

Scale

WORK COPY

R-87768