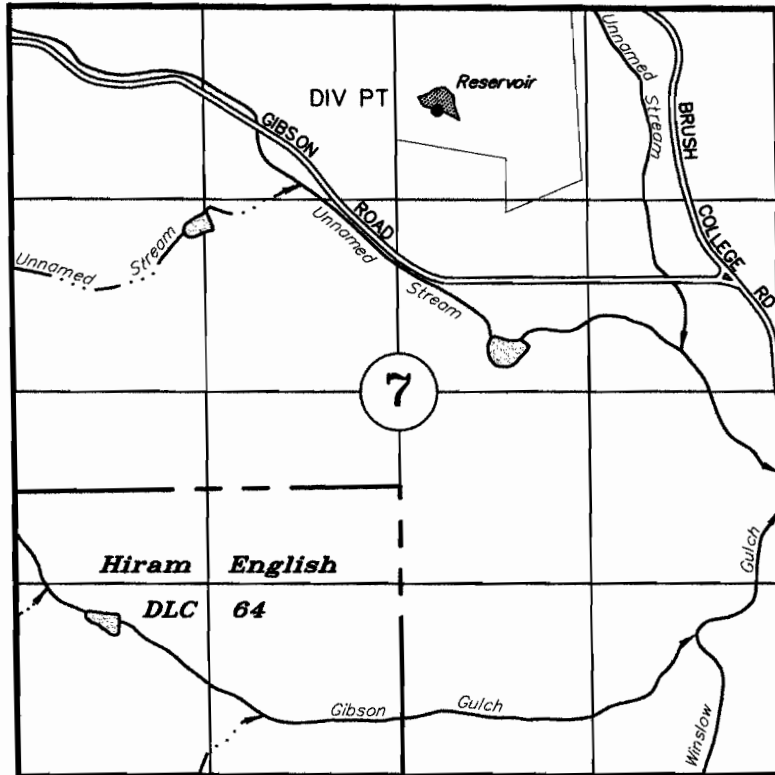


# T7S, R3W, WM

POLK COUNTY



TAX LOT:  
7.3.7 00208

DIV PT: 705' SOUTH & 290' EAST OF N 1/4 COR SEC 7

## APPLICATION TO STORE WATER

Application No. R-87769 Permit No. \_\_\_\_\_

**X NOVO, LLC**

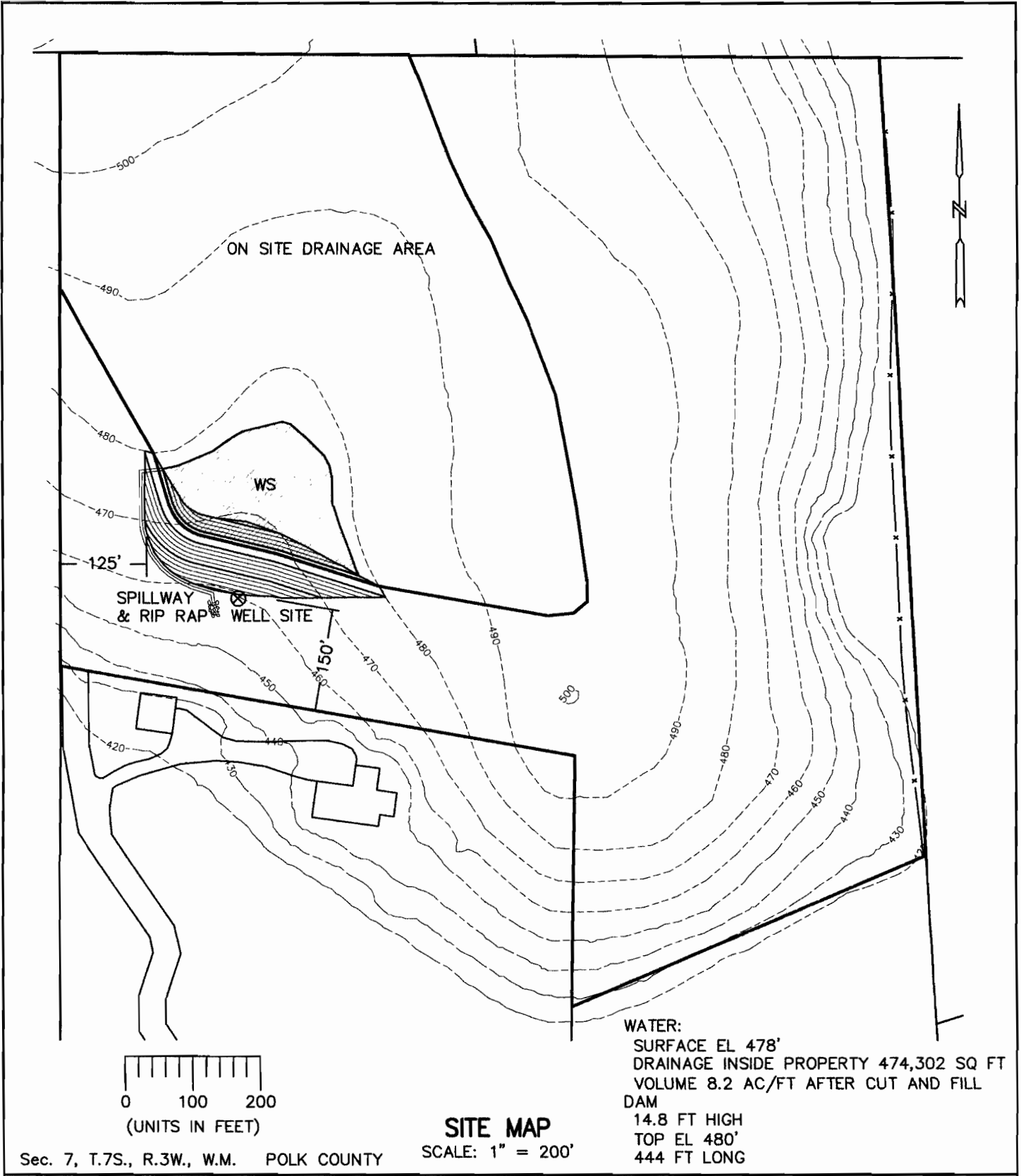
SEPTEMBER 26, 2011  
SCALE 1" = 1320'



NOTE: This map is not intended to provide legal dimensions or locations of property ownership lines.

Renewal Date: December 31, 2011

R-87769



**PROPOSED DAM**

**X NOVO, LLC, CRAIG WILLIAMS, manager**

3285 Gibson Road - Salem, OR

**RECEIVED**

NOV 28 2011

WATER RESOURCES DEPT  
SALEM, OREGON

R-87769

DRAWN BY: MRD

CHECKED BY: CFB

SCALE: 1"=200'

DATE: 10-04-2011

BOATWRIGHT ENGINEERING, INC.  
 2613 12th St. SE. SALEM OR. 97302  
 TEL. (503)363-9225 FAX (503)363-1051

480

470

460

-100

0

100

200

# DAM & RESERVOIR CROSS SECTION

SCALE HORIZ: 1" = 40'  
VERT: 1" = 4'

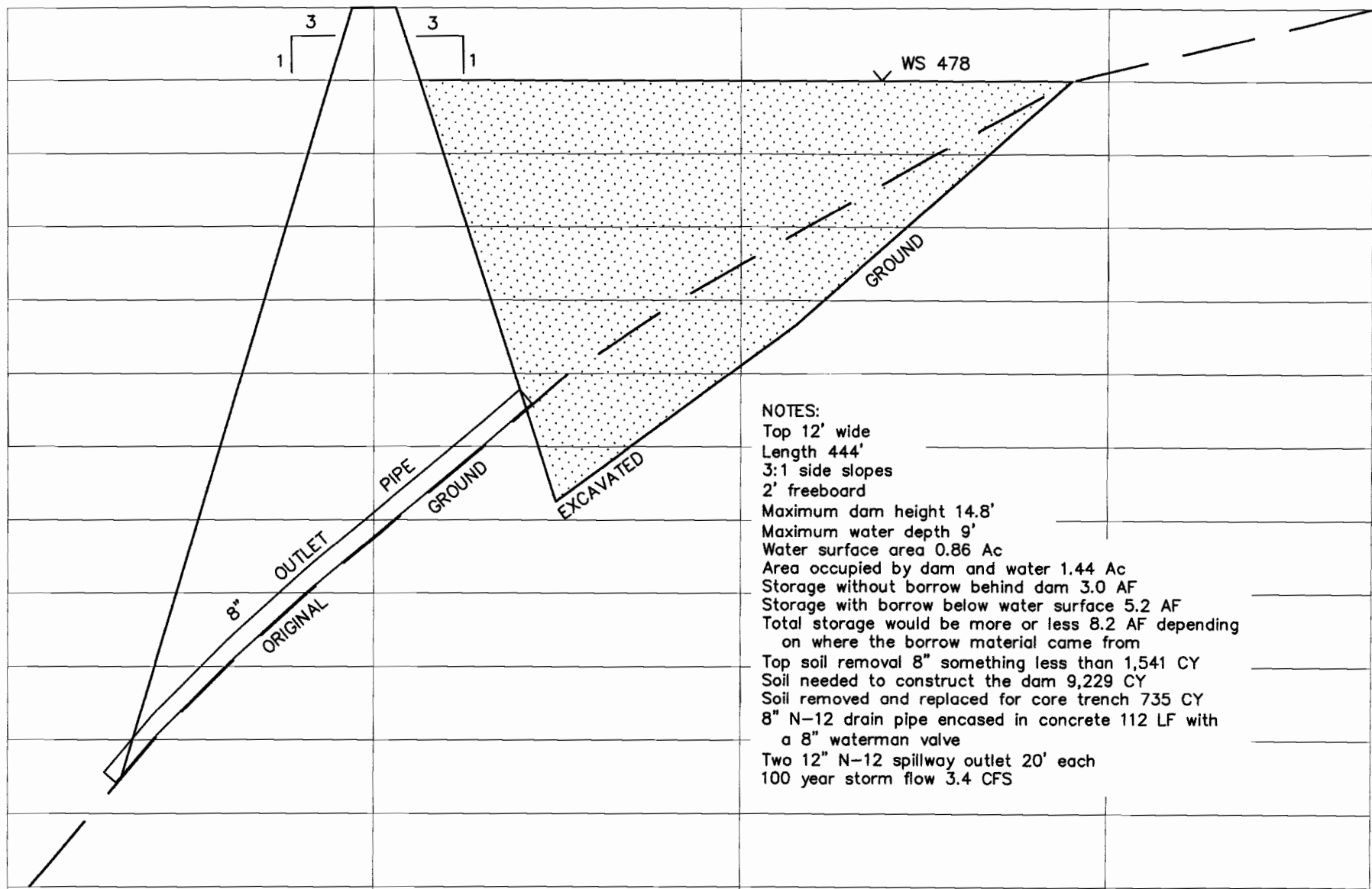
X NOVO, LLC, Craig Williams, manager

R-87769

RECEIVED

NOV 28 2011

WATER RESOURCES DEPT  
SALEM, OREGON  
Boyd Wright Engineering, Inc.  
October 13, 2011



- NOTES:
- Top 12' wide
  - Length 444'
  - 3:1 side slopes
  - 2' freeboard
  - Maximum dam height 14.8'
  - Maximum water depth 9'
  - Water surface area 0.86 Ac
  - Area occupied by dam and water 1.44 Ac
  - Storage without borrow behind dam 3.0 AF
  - Storage with borrow below water surface 5.2 AF
  - Total storage would be more or less 8.2 AF depending on where the borrow material came from
  - Top soil removal 8" something less than 1,541 CY
  - Soil needed to construct the dam 9,229 CY
  - Soil removed and replaced for core trench 735 CY
  - 8" N-12 drain pipe encased in concrete 112 LF with a 8" waterman valve
  - Two 12" N-12 spillway outlet 20' each
  - 100 year storm flow 3.4 CFS