

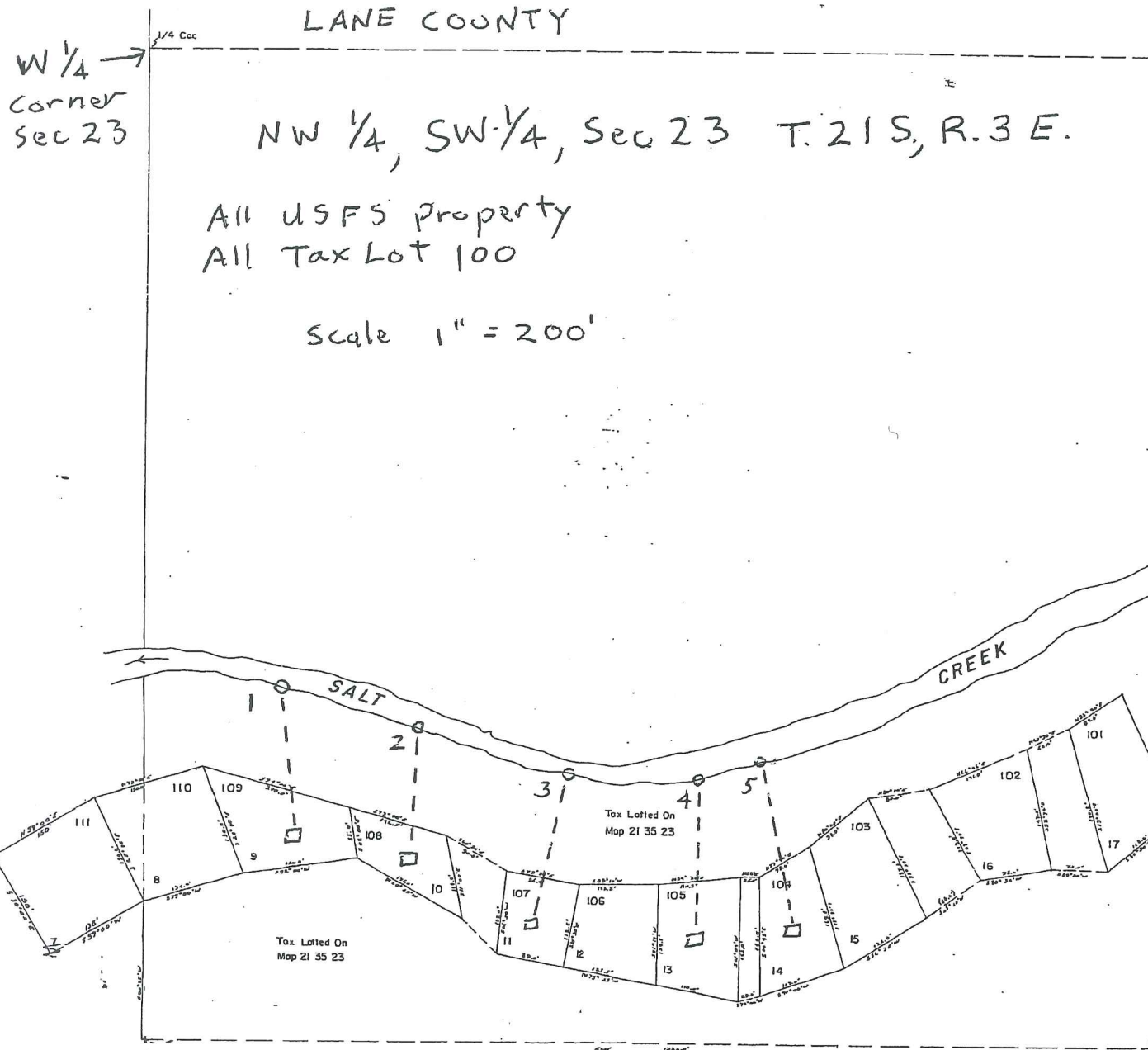
RECEIVED

DEC 14 2011

WATER RESOURCES DEPT
SALEM, OREGON

- POD 1: 850'S; 180'E
- POD 2: 900'S; 360'E
- POD 3: 960'S; 555'E
- POD 4: 970'S; 725'E
- POD 5: 945'S; 810'E

all from W 1/4 corner
section 23
T21S R3E



See Map 21 35 23

Appl. S-87499