


THIS MAP WAS PREPARED FOR ALLOCATION PURPOSES ONLY


SECTION 32 T38S R3W. WM. JACKSON COUNTY

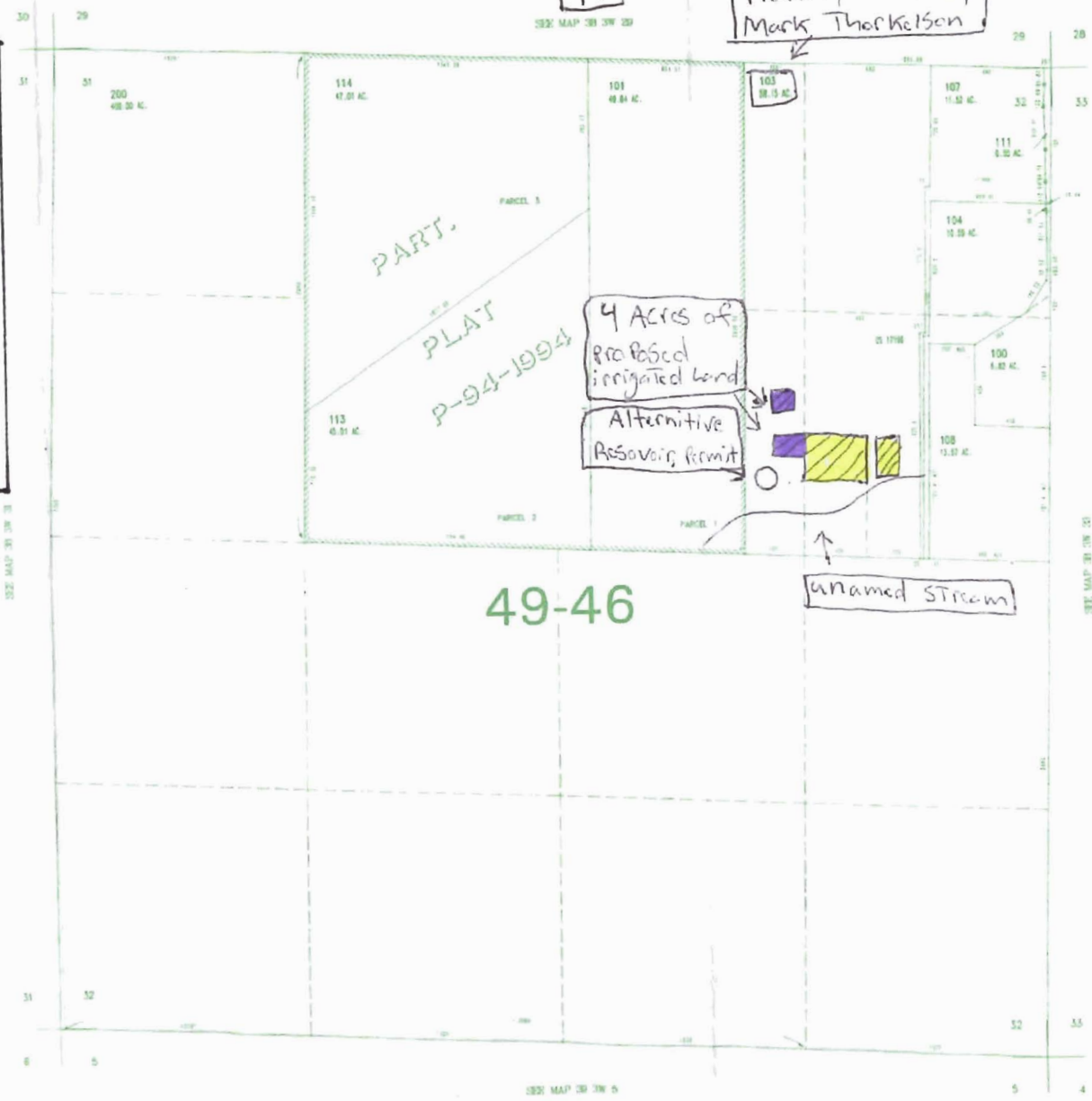


Property owned by Mark Thorkelson

Legend

 Proposed Irrigated Land in SW NE = 1 acre total

 Proposed Irrigated Land in SENE = 3 acres total



CANCELLED NO

METAFILE C:\WORKSPACE\284516\ PLAT.DWG
CREATED MONDAY, SEPTEMBER 12, 2006 6:23 AM BY: KIRKPAAJ

RECEIVED
DEC 19 2011
WATER RESOURCES DEPT
SALEM, OREGON

SECTION 32 T38S. R3W. W.M.
JACKSON COUNTY

SCALE ±
1" = 500 FEET

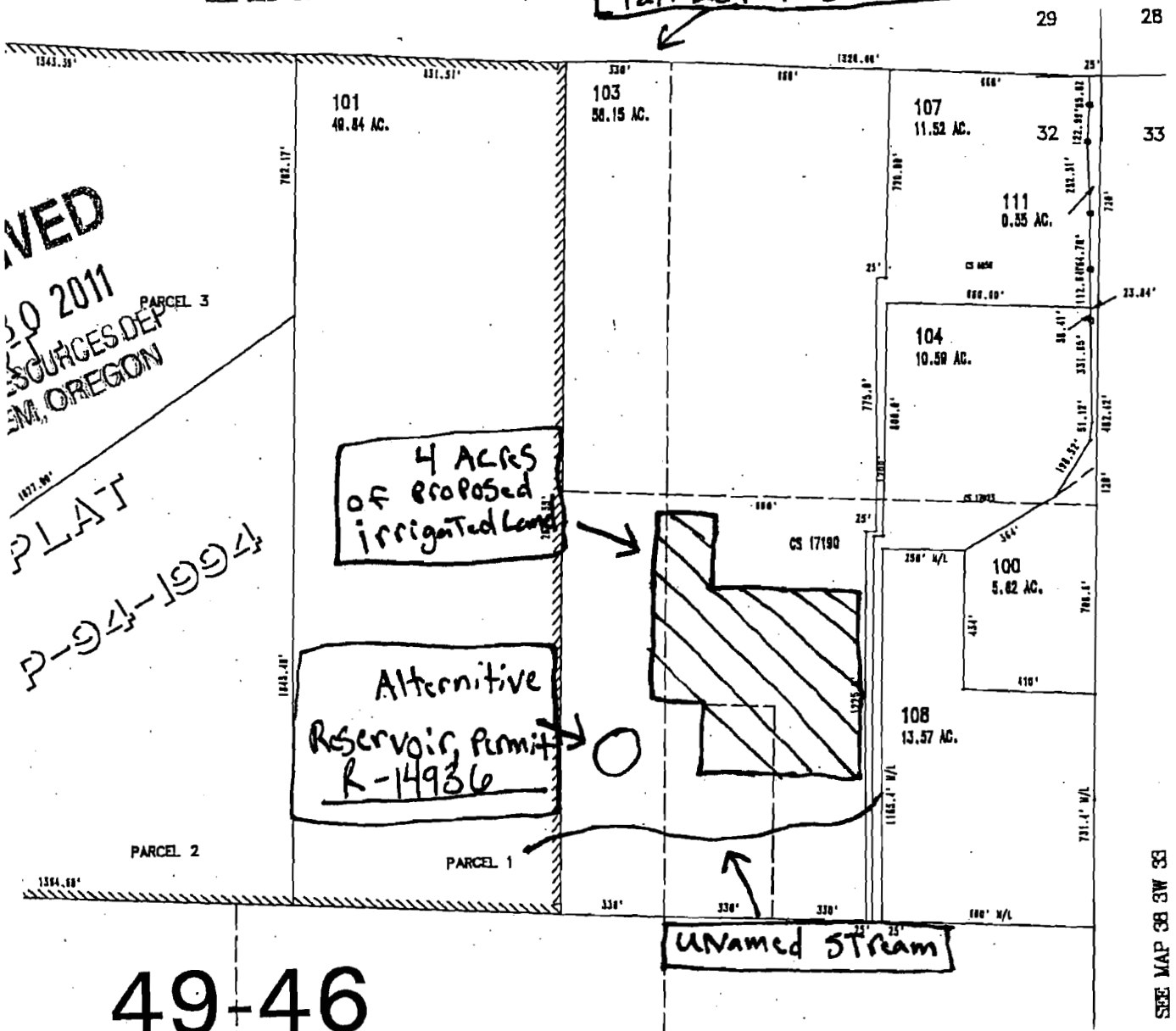
North

SEE MAP 38 3W 29

Property owned by
Mark Thorkelson,
TAX LOT 103

VED
30 2011
SOURCES DEP
EM, OREGON

PLAT
P-94-1994



49-46

ACRES

SE 1/4 NE 1/4

SW 1/4 NE 1/4

S-87771

SEE MAP 38 3W 33

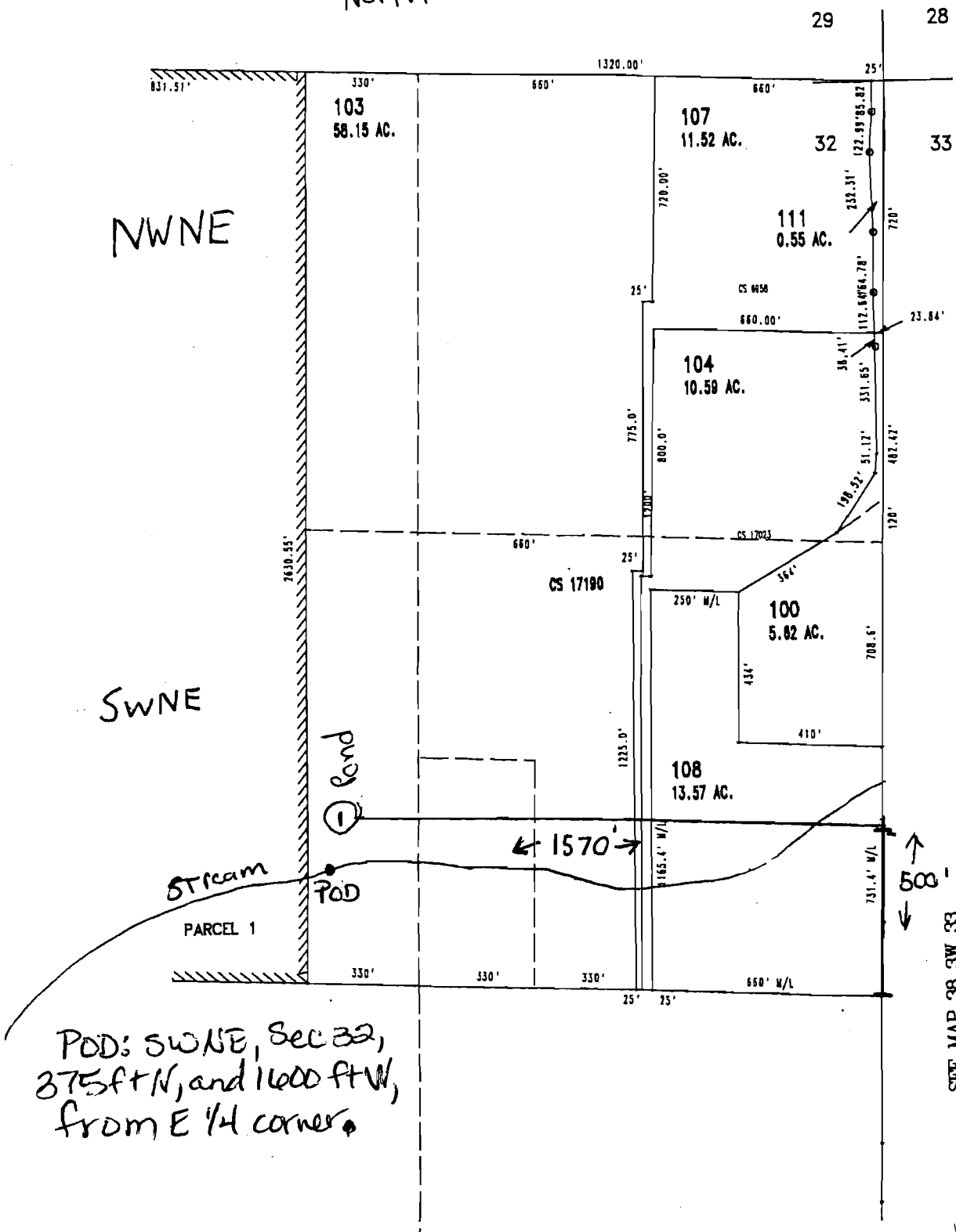
R-87671

T38S, R3W, Sec. 32

North

NWNE

SWNE



POD: SWNE, Sec 32,
375ft N, and 1600 ft W,
from E 1/4 corner.

RECEIVED
 DEC 06 2010
 WATER RESOURCES DEPT
 SALEM, OREGON

SEE MAP 38 3W 33

RECEIVED
 NOV 21 2011
 WATER RESOURCES DEPT
 SALEM, OREGON

R-87671
R14936

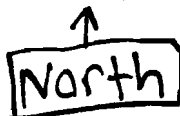
S-87771

Map 2

THIS MAP WAS PREPARED FOR
ASSESSMENT PURPOSE ONLY

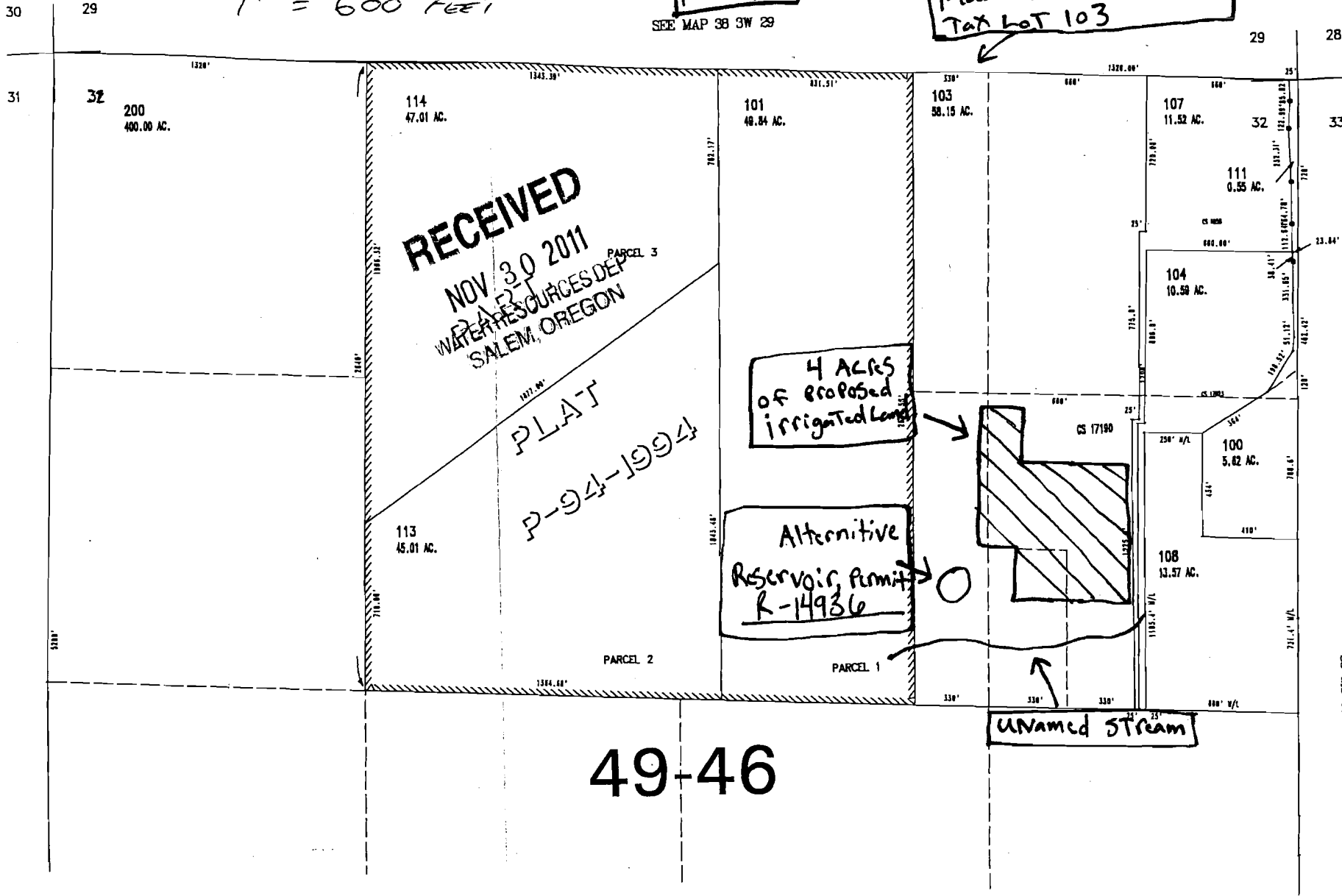
SECTION 32 T38S. R3W. WM.
JACKSON COUNTY

COLLECTED ADJUSTED
AS PER SCALE
1" = 600 FEET



SEE MAP 38 3W 29

Property owned by
Mark Thorkelson,
Tax Lot 103



RECEIVED
NOV 30 2011
OREGON DEPT OF
WATER RESOURCES
SALEM, OREGON

PLAT
P-94-1994

4 ACRES
OF PROPOSED
IRRIGATED LAND

Alternative
Reservoir, Permit
R-14936

UNAMED STREAM

49-46

5-6777

SEE MAP 38 3W 31

SEE MAP 38 3W 33

PLOT

RECEIVED

NOV 30 2017

WATER RESOURCES DEPT
SALEM, OREGON

RECEIVED

NOV 30 2017

WATER RESOURCES DEPT
SALEM, OREGON

0 400 Feet

1" = 500 feet



JACKSON
COUNTY
Oregon

This map is based on a digital database compiled by Jackson County from a variety of sources. Jackson County cannot accept responsibility for errors, omissions or positional accuracy. There are no warranties, expressed or implied.

File date: Nov 17, 2016; HGIS/planning/arc

S-01774

