

NW 1/4 Sec 31 T5N R29E W4W

5N2931B

Umatilla County

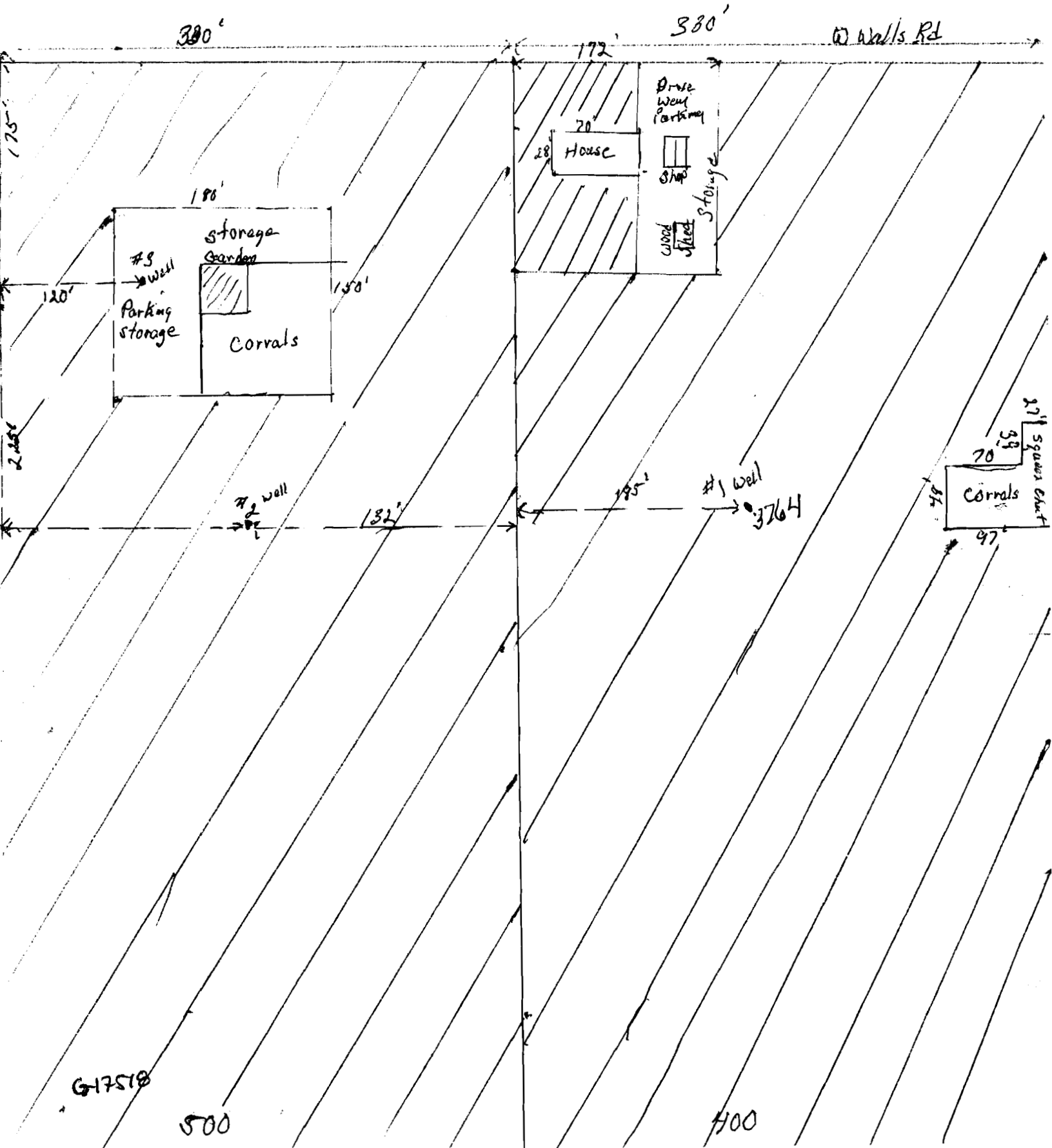
LOTS 400 & 500

RECEIVED

DEC 15 2011

WATER RESOURCES DEPT  
SALEM, OREGON

North ↑



617518

500

400

See Map 5N-29C

N 89° 58' 20" E 288.77'

(W WALLS ROAD)

(NO. 62)

30

66 RD.

3T

800  
4.22 AC.

701  
6.19 AC.

600  
3.80 AC.

500  
9.78 AC.

400  
3.75 AC.

300  
9.75 AC.

702  
4.75 AC.

700  
19.74 AC.

40.70

NW 1/4 NW 1/4

17.5 AC

NE 1/4 NE 1/4

8-3

LOT 2

900  
3.88 AC.

1100  
17.19 AC.

2600  
5.00 AC.

2500  
5.00 AC.

2400  
2.50 AC.

1000  
0.98 AC.

40-50

15' Easement

WORK COPY

ADJUSTED  
CORRECTED  
APPROX SCALE

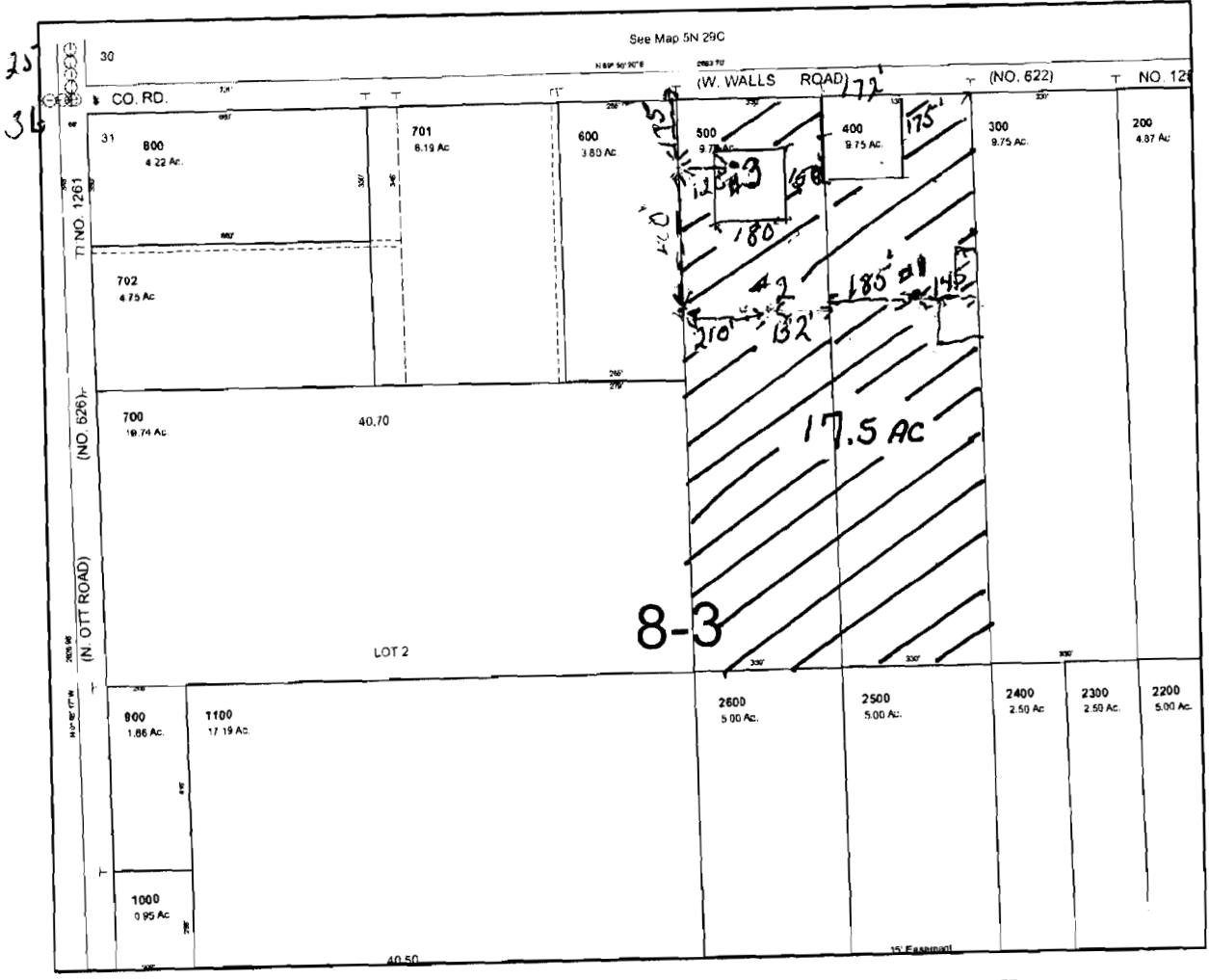
1" = 300 FEET

REC

DEC 1

G-17518

↑ north



RECEIVED

DEC 15 2011

WATER RESOURCES DEPT  
SALEM OREGON


5N2931B TL 400 & 500  
Scale 1" = 400'

William R Pelletier  
32184 W. Walls Rd  
Hermiston Or 97838

Lots 400+500

NE 1/4 NW 1/4 Sec 31 T5N R29E W.M.  
6-17-19

Well #1 + #2 is existing irrigation wells  
well #3 Domestic

 Area purpose to be Irrigated  
17.5 Acres.

25  
36

See Map 5N 29C

N 89° 52' 20" E 283.70'

30

CO. RD.

(W. WALLS ROAD) 77'

(NO. 622)

NO. 12

31  
800  
4.22 Ac.

701  
8.19 Ac.

600  
3.80 Ac.

500  
9.75 Ac.

400  
9.75 Ac.

300  
9.75 Ac.

200  
4.87 Ac.

702  
4.75 Ac.

700  
19.74 Ac.

40.70

nw 1/4 nw 1/4

8-3

17.5 AC

NE 1/4

NE 1/4

LOT 2

900  
1.86 Ac.

1100  
17.19 Ac.

2600  
5.00 Ac.

2500  
5.00 Ac.

2400  
2.50 Ac.

2300  
2.50 Ac.

2200  
5.00 Ac.

1000  
0.95 Ac.

40.50

15' Easement

11 NO. 1201

(NO. 626)

(N. OIL ROAD)

2000 FT W

RECEIVED

DEC 15 2011

WORK  
COPY

G-17518

This map was prepared for assessment purposes

# NW1/4 SEC 31 T5N R29E WM

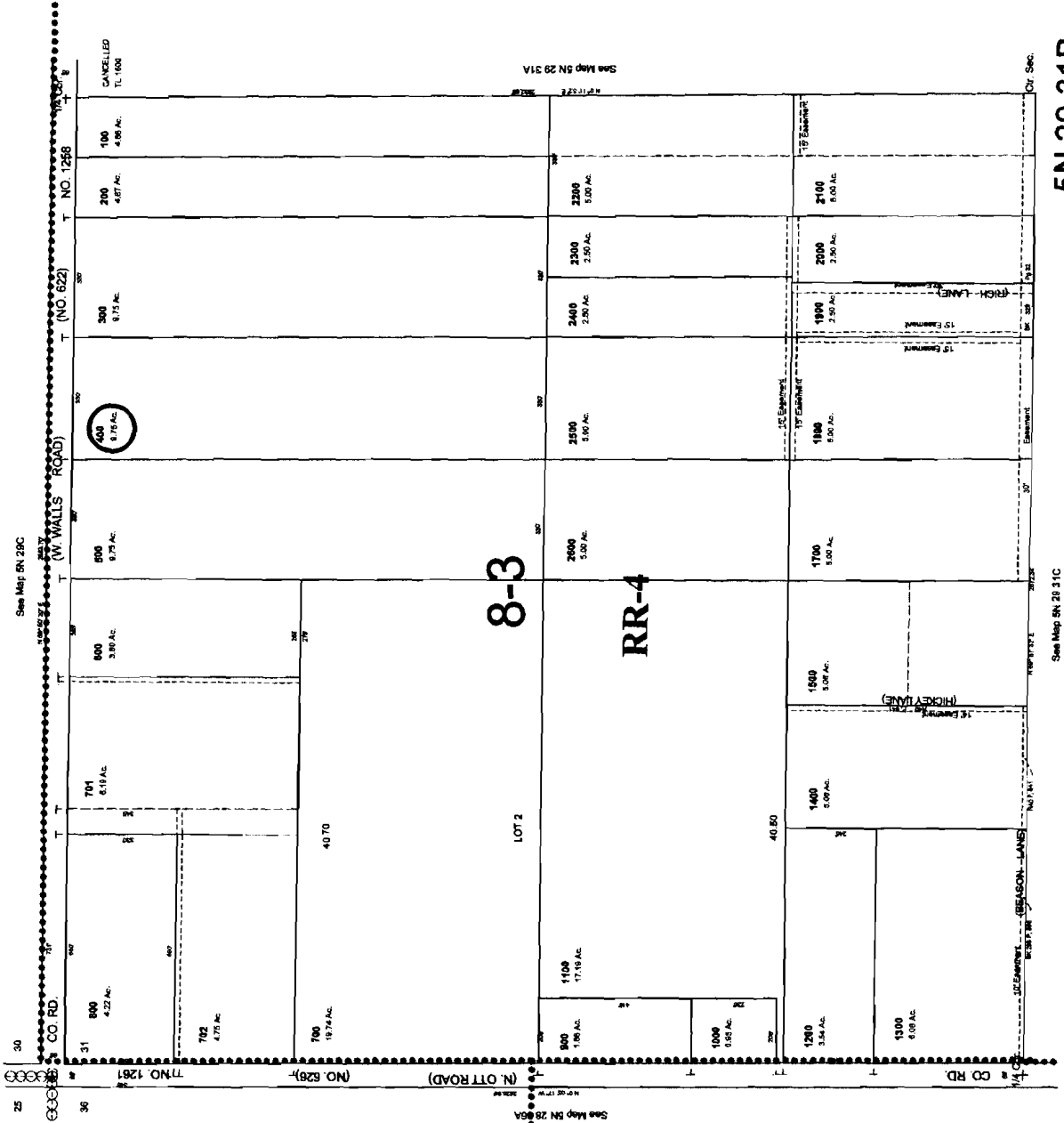
## UMATILLA COUNTY

SCALE 1"=200'

5N 29 31B

AERIAL PHOTO NO. 1P-101

9/28/06



5N 29 31B

RECEIVED

DEC 15 2011

WATER RESOURCES DEPT  
SALEM, OREGON

6-17518

This map was prepared for assessment purposes

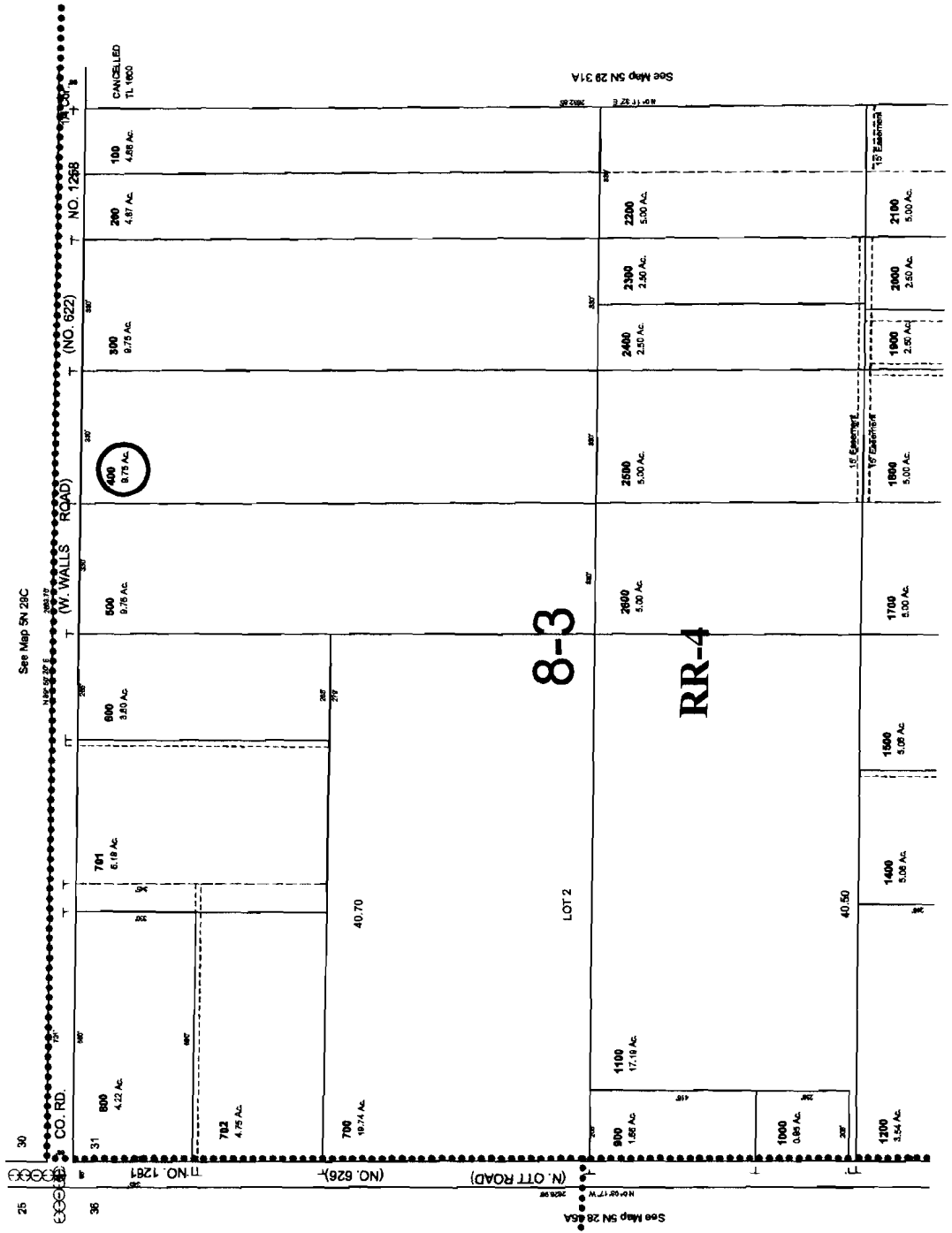
# NW1/4 SEC 31 T5N R29E WM UMATILLA COUNTY

92606

## 5N 29 31B

AERIAL PHOTO NO. 1P-101

SCALE 1"=200'



# 8-3

# RR-4

**RECEIVED**  
**DEC 15 2011**  
**WATER RESOURCES DEPT**  
**SALEM, OREGON**

G-17510