

This map.
Rec'd 9-20-11

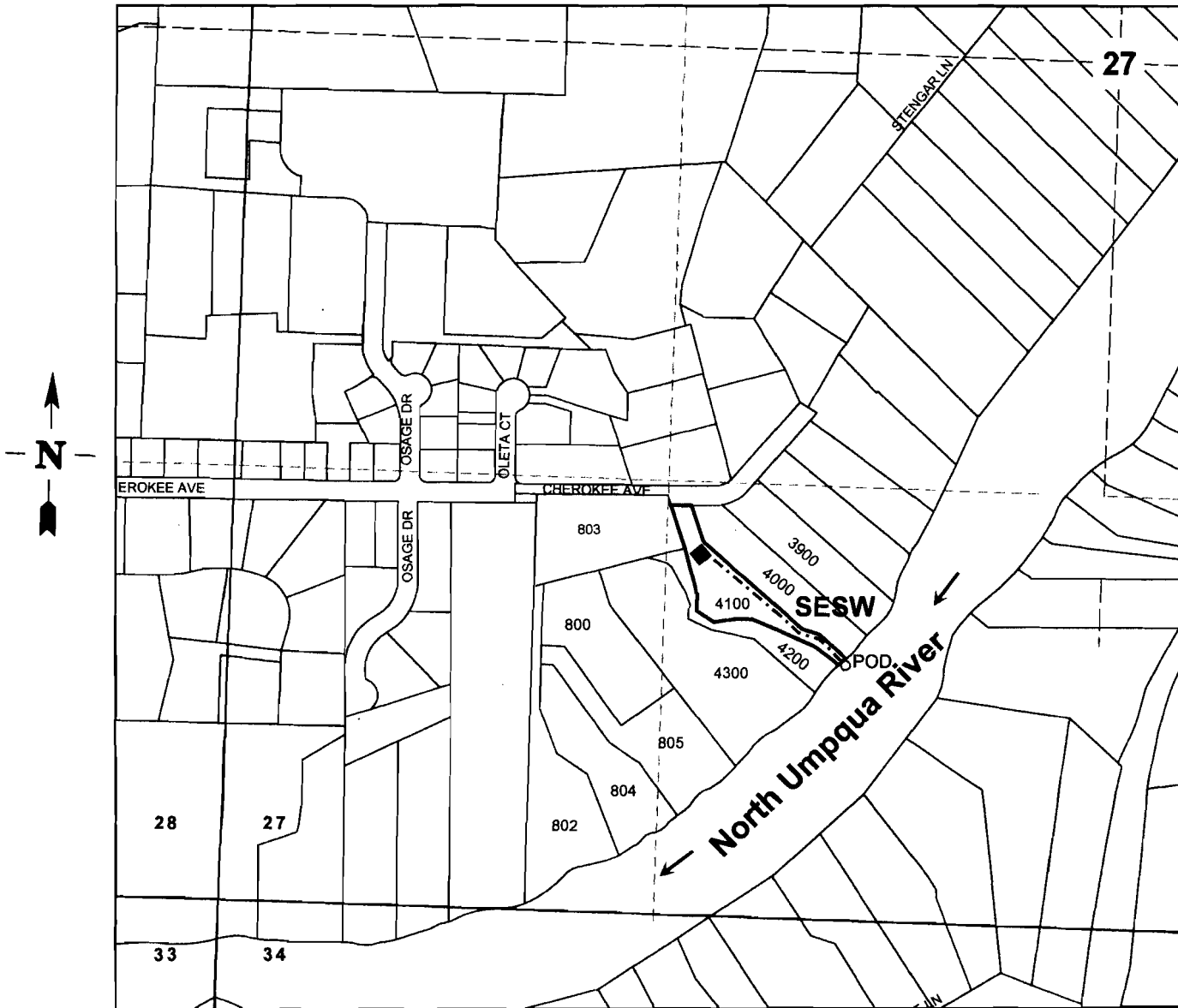
RECEIVED

SEP 20 2011

WATER RESOURCES DEPT
SALEM, OREGON

SEC. 27 T. 26S. R. 6W. W.M.
DOUGLAS COUNTY
Scale 1" = 500'

AMENDED Bothwell Application Map



POD: 780 ft. N. and 1900 E. from the SW corner of Sec. 27

App S-87731