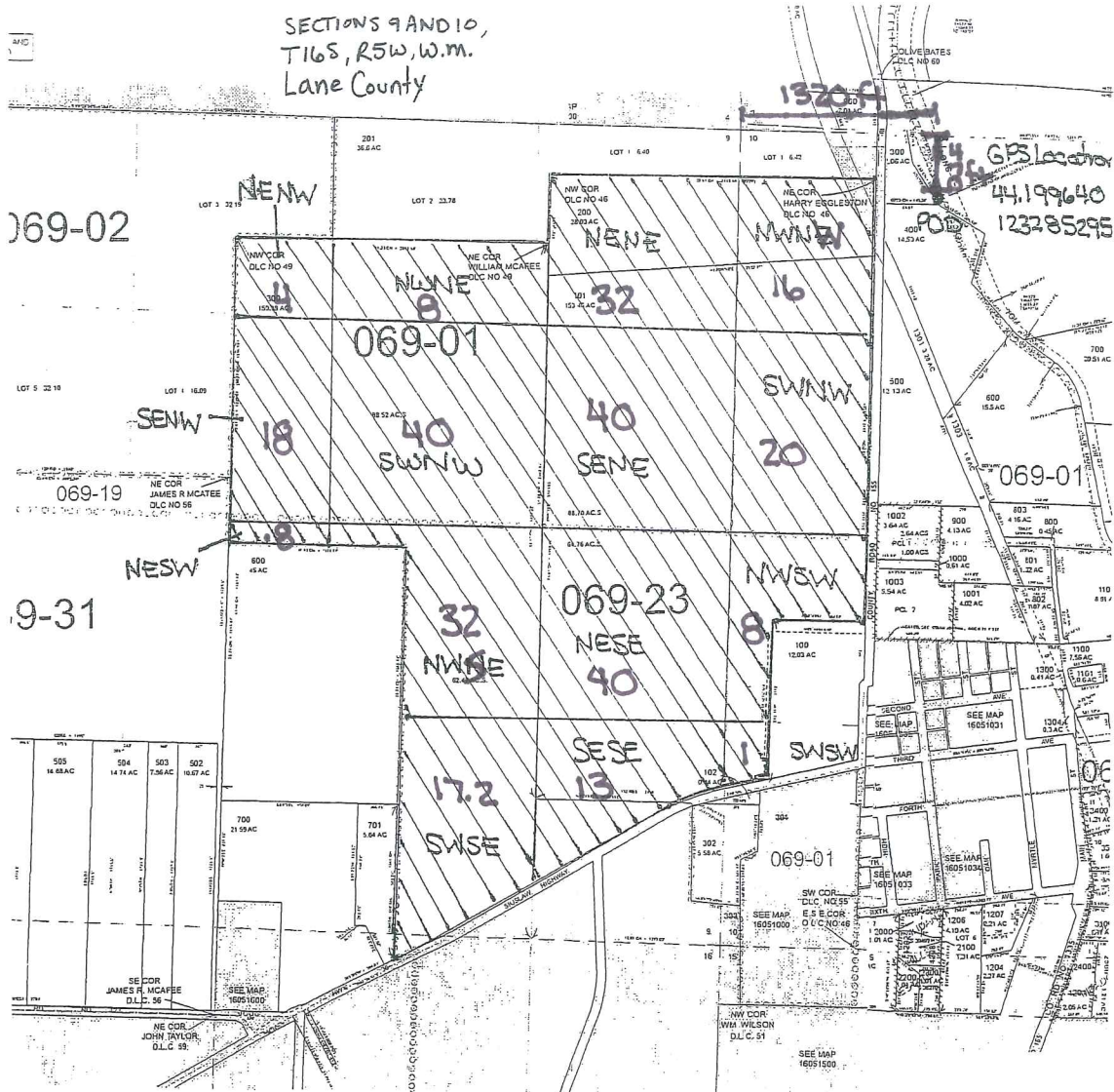


SECTIONS 9 AND 10,  
T16S, R5W, W.M.  
Lane County



069-02

069-19

9-31

503 16.8 AC	504 14.18 AC	505 10.87 AC	502 10.87 AC
SE COR JAMES R. MCAFEE D.L.C. 56			
NE COR JOHN TAYLOR D.L.C. 39			

↑  
NORTH

Scale: 1" = 1320 ft

RECEIVED

JAN 09 2012

WATER RESOURCES DEPT  
SALEM, OREGON

SECTIONS 9 AND 10,  
T16S, R5W, W.M.  
Lane County



*superseded*

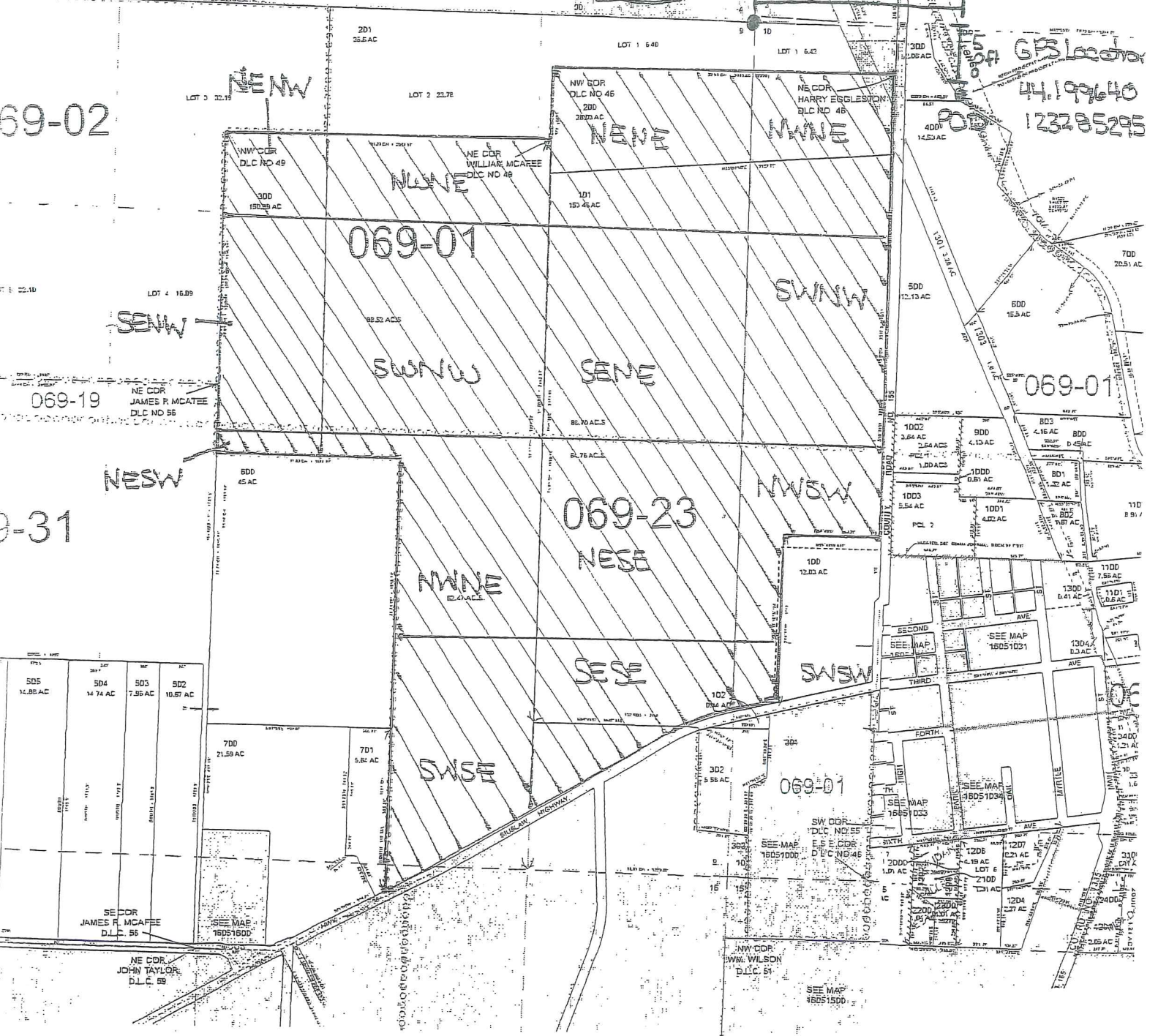
69-02

44199640  
123285295

069-19

3-31

SD5 14.86 AC	SD4 14.74 AC	SD3 7.56 AC	SD2 10.87 AC
SE COR JAMES R. MCAFFEE D.L.C. 56			
NE COR JOHN TAYLOR D.L.C. 55			



RECEIVED

DEC 23 2011

WATER RESOURCES DEPT  
SALEM, OREGON

S-87774