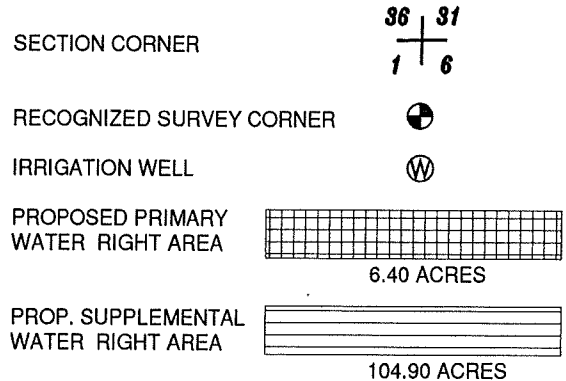


LEGEND	
DISCRIPTION	SYMBOLS
SECTION LINE	—————
QUARTER-QUARTER LINE	- - - - -
TAX LOT LINE	—————
CREEK	- - - - -
DITCH	===== ===== =====



NEW WELL LOCATION

R&R WELL No. 1: 1070' NORTH AND 80' EAST OF THE SE CORNER SECTION 31, T15S., R.43 E., W.M.

OWRD WELL # L104080

CERTIFICATE No.'s:
75332
75333
75337

PRIMARY WATER RIGHT PLACE OF USE (SEC., 1/4 1/4, ACRES, TAX LOT)

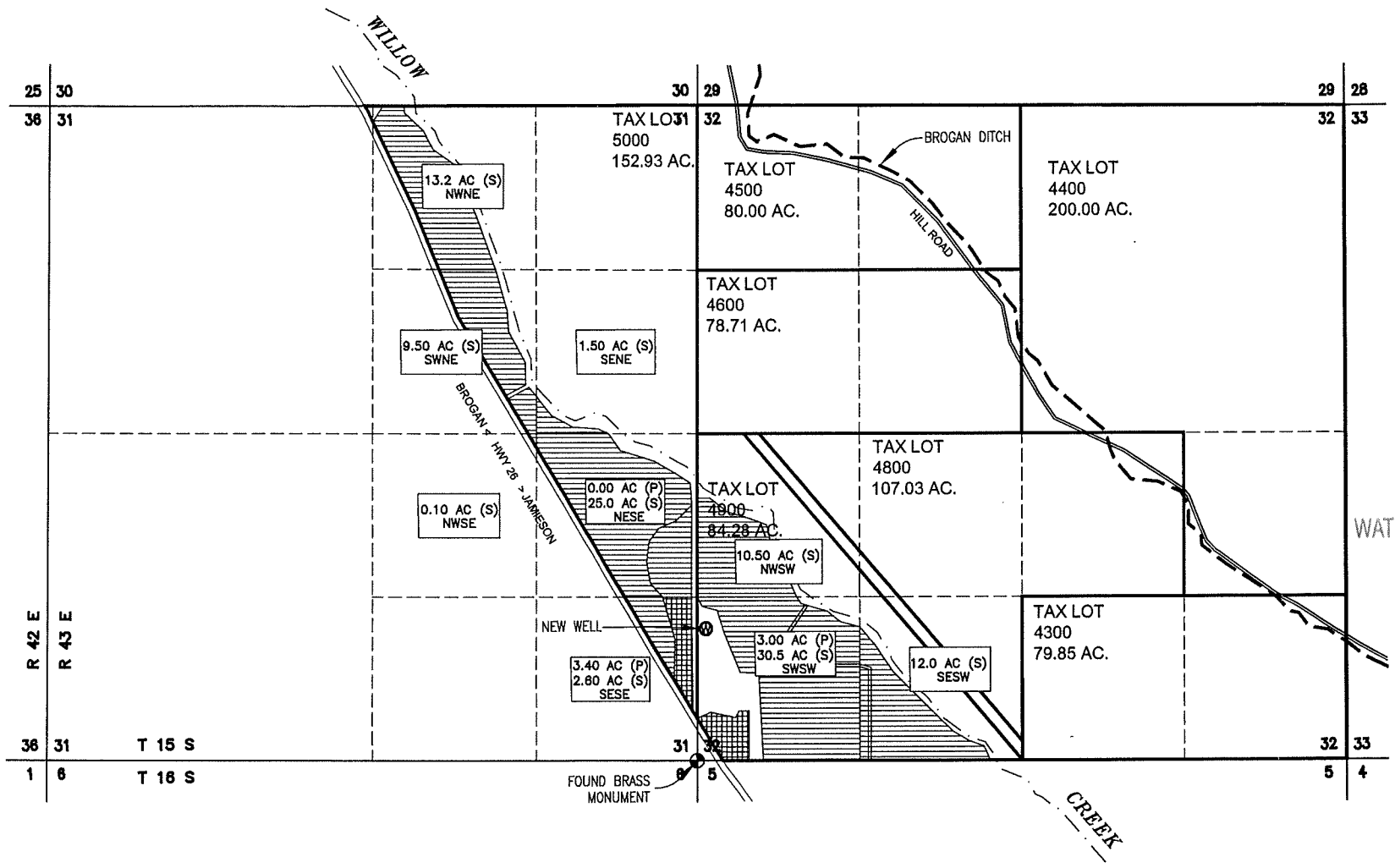
T.15 S. R. 43 E. SECTION 31:
 NESE 0.00 AC. TL5000
 (3.40 AC.) SESE 3.40 AC. TL5000

T.15 S. R. 43 E. SECTION 32:
 SWSW 3.00 AC. TL4900
 (3.00 AC.)

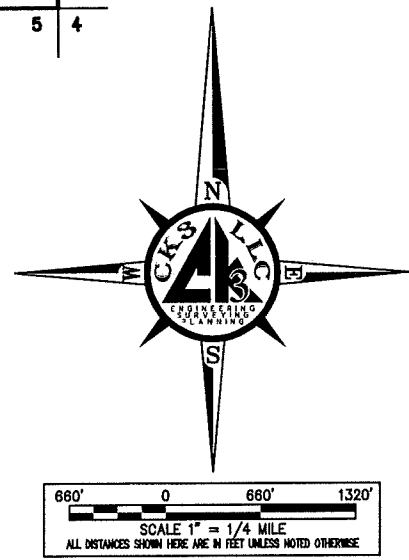
SUPPLEMENTAL WATER RIGHT PLACE OF USE (SEC., 1/4 1/4, ACRES, TAX LOT)

T.15 S. R. 43 E. SECTION 31:
 (51.90 AC.) NWNE 13.20 AC. TL5000
 SWNE 9.50 AC. TL5000
 SENE 1.50 AC. TL5000
 NESE 25.00 AC. TL5000
 NWSE 0.10 AC. TL5000
 SESE 2.60 AC. TL5000

T. 15 S. R. 43 E. SECTION 32:
 NWSW 10.50 AC. TL4900
 (53.00 AC.) SWSW 30.50 AC. TL4900
 SESW 12.0 AC. TL4900



RECEIVED
JAN 25 2012
WATER RESOURCES DEPT
SALEM, OREGON



DISCLAIMER

I, STEWART R. EDWARDS, HEREBY CERTIFY: THAT THIS MAP WAS MADE TO BE PART OF THE APPLICATION FOR WATER RIGHTS. SECTIONAL LINES SHOWN ARE APPROXIMATE AND THIS MAP IS NOT INTENDED FOR ANY OTHER USE AND DOES NOT GUARANTEE LAND OWNERSHIP.

G-17528

ENG. BY:	NA
APR. BY:	Stewart R. Edwards
DWG. BY:	PJW
DATE:	01/16/2012

#	REVISION	DATE
01		
02		
03		
04		

WATER RIGHT APPLICATION MAP

T 15 S, R 43 E,
SEC. 31 & 32, W.M.
MALHEUR COUNTY, OREGON

ROCKIN R CATTLE CO., LLC
PO Box 550
MERIDIAN, ID 83680

CK3, LLC
368 S.W. 5th Avenue
Ontario, Oregon 97914
Phn: (541) 889-5411
Fax: (541) 889-2074

CIVIL-STRUCTURAL-ELECTRICAL
ENGINEERING, SURVEYING & PLANNING

WRI

SHEET: 1 OF 1

JOB: CO-11017

THIS DRAWING, & ALL INFORMATION, HEREIN, REMAIN THE PROPERTY OF CK3, L.L.C. ALL RIGHTS ARE EXPRESSLY RESERVED & IT MAY NOT BE REPRODUCED IN WHOLE OR IN PART WITHOUT THE EXPRESSED WRITTEN CONSENT OF CK3, L.L.C.