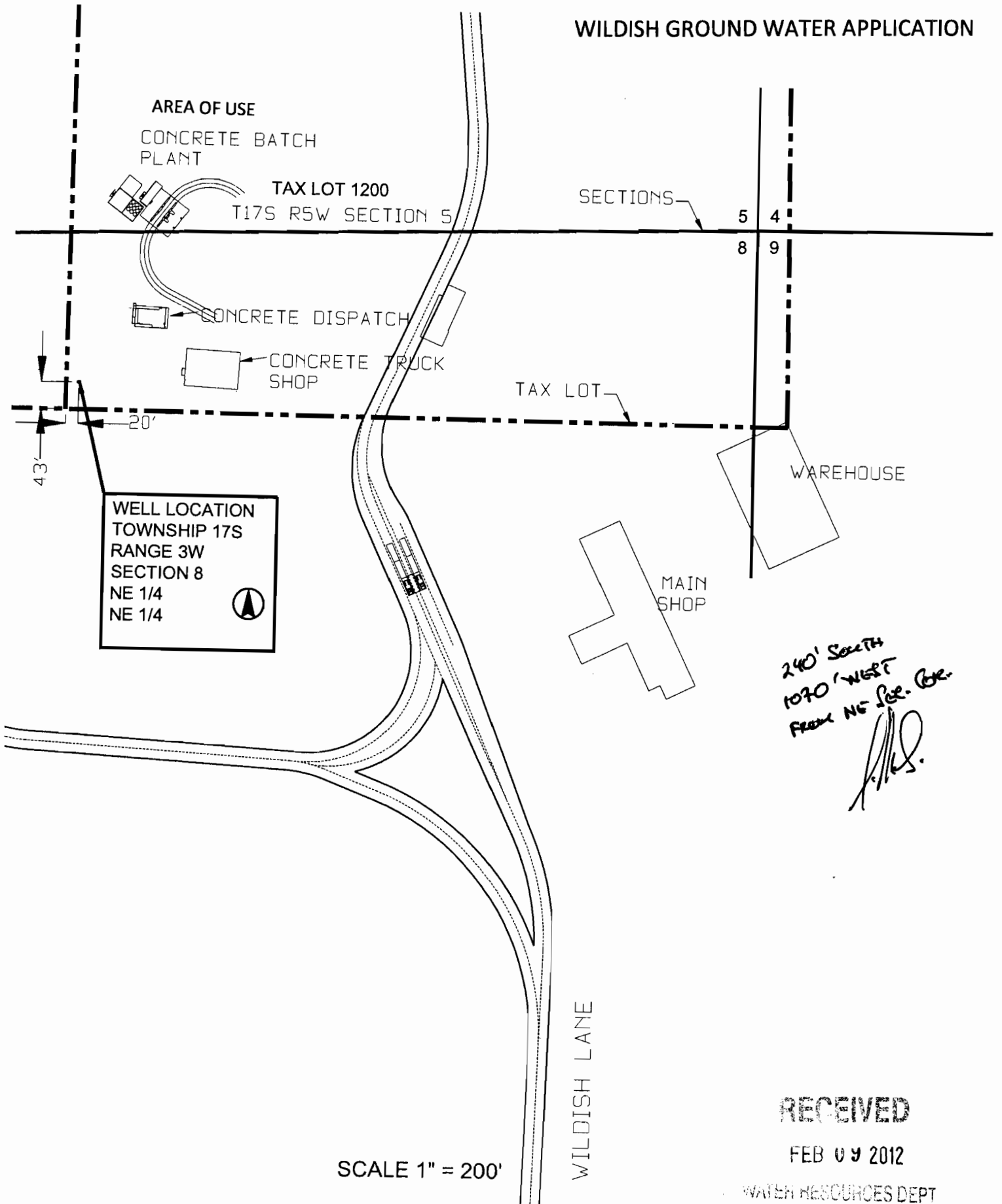


WILDISH GROUND WATER APPLICATION



240' SOUTH  
1070' WEST  
FROM NE 1/4 COR.  
*[Signature]*

RECEIVED

FEB 09 2012

WATER RESOURCES DEPT  
SALEM, OREGON

SCALE 1" = 200'

G-17532

Added by K Kavanagh  
2-10-12

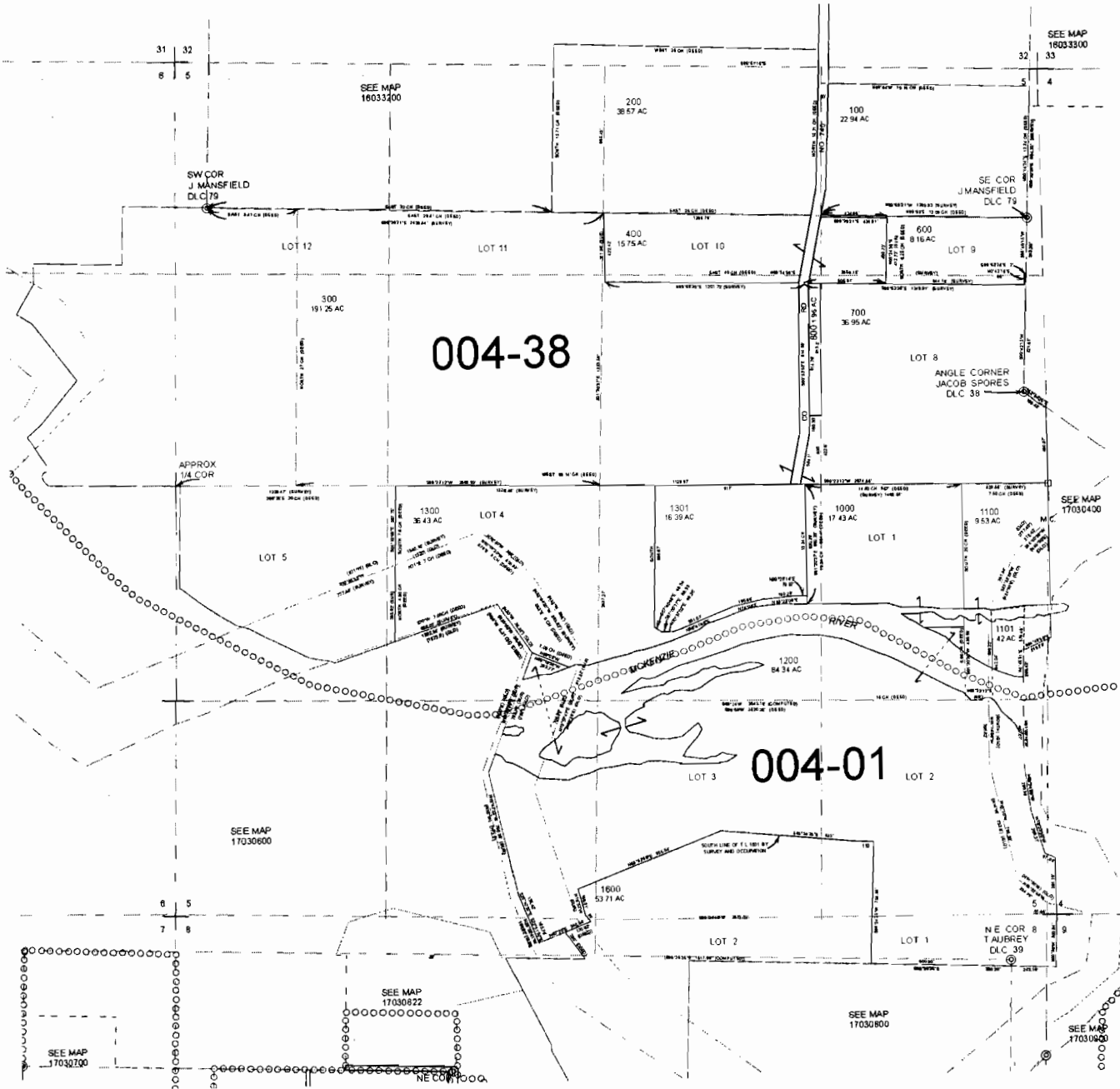
17030500

FOR ASSESSMENT AND  
TAXATION ONLY

SECTION 5 T.17S. R.3W. W.M.  
Lane County  
1" = 400'

GIS DATA  
1/26/2011 1:52:45 PM kmh

CANCELLED  
500  
900  
1400  
1500



REVISIONS  
02/20/11 - LEAT BT - CONVERT MAP TO GIS

17030500

G-17532