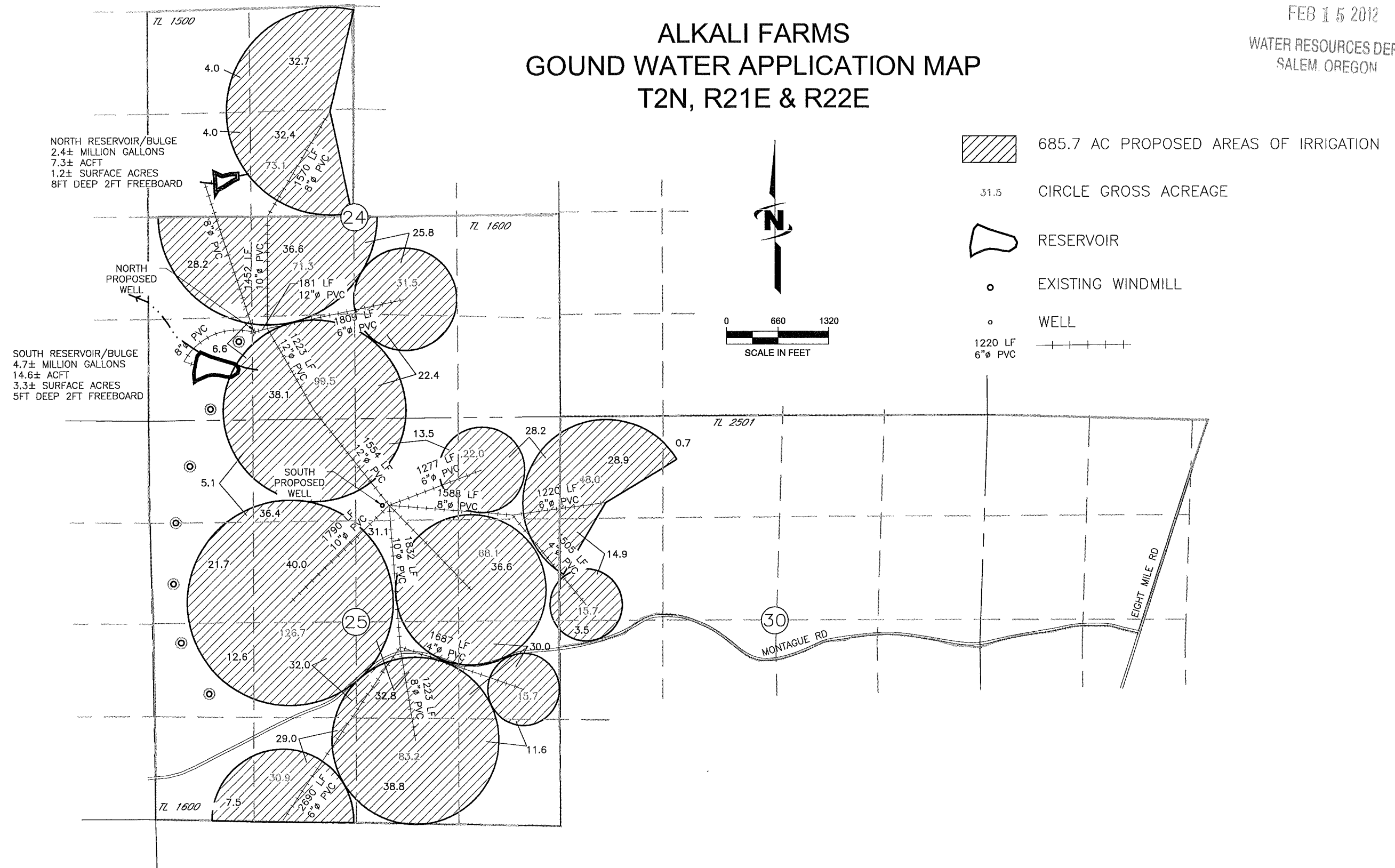


RECEIVED

FEB 15 2012

WATER RESOURCES DEPT
SALEM, OREGON

ALKALI FARMS GOUND WATER APPLICATION MAP T2N, R21E & R22E



NOTE:
THE PURPOSE OF THIS MAP IS TO IDENTIFY THE APPROXIMATE LOCATION
OF THE WATER RIGHT. IT IS NOT INTENDED TO PROVIDE INFORMATION
RELATIVE TO THE LOCATION OF PROPERTY OWNERSHIP BOUNDARY LINES.

DRAWING: F:\Project\30-08-016 - Porfily Water Rights Consulting\--00 Misc Engineering\Cad\ALKALI FARMS\circle.dwg
PRINTED BY: rwillard on 02/08/12 01:48 PM

Q-17535