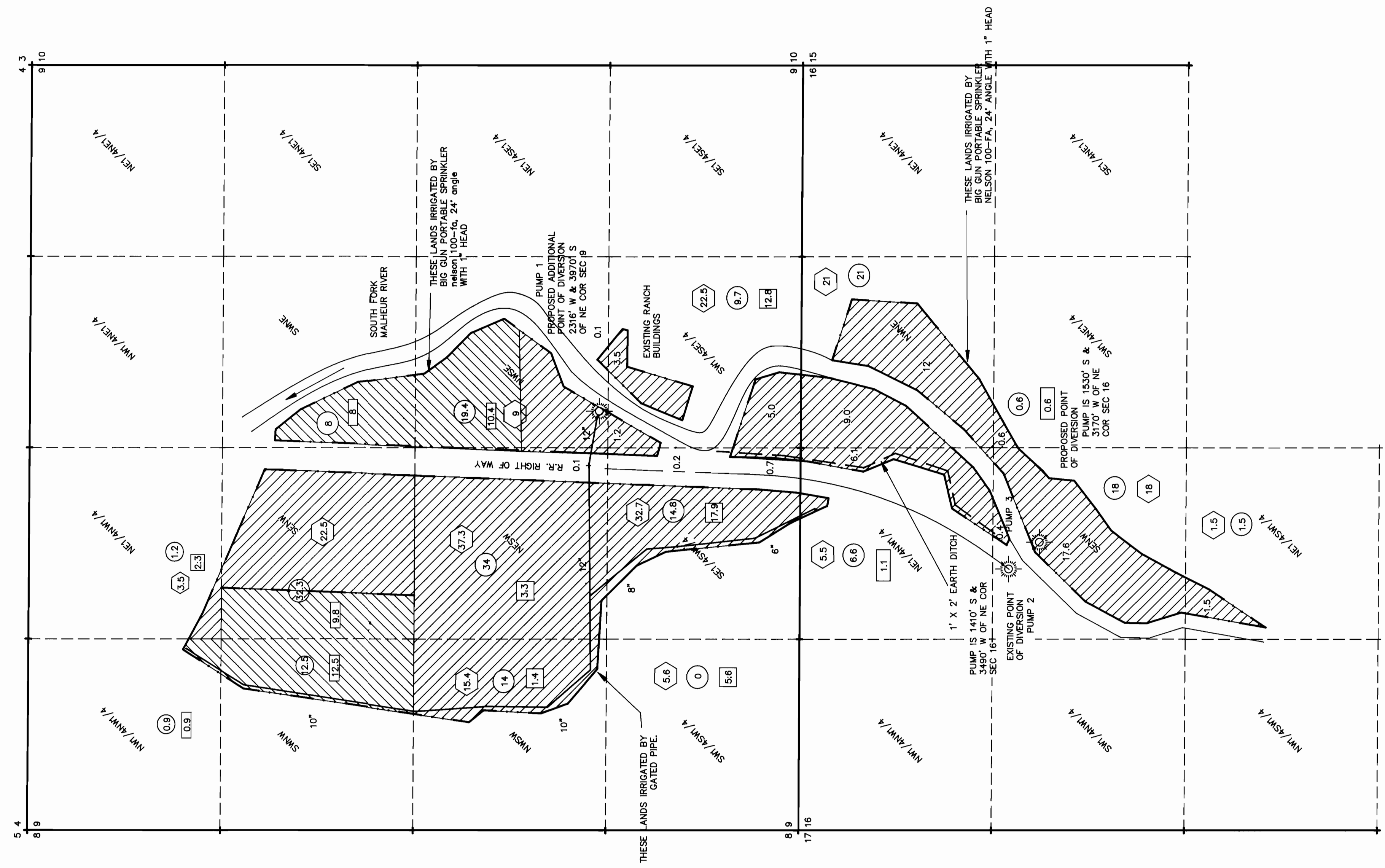


SECTIONS 9 AND 16
Twp. 24 S. R. 37 E. W.M.
Malheur County, Oregon
Tax Lot 700



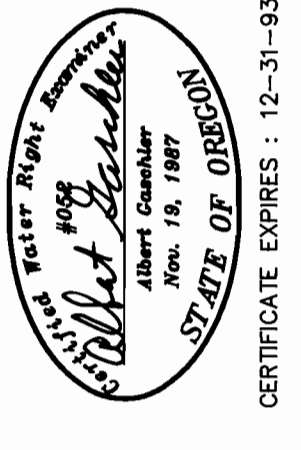
NOTES :
LANDS IRRIGABLE UNDER EXISTING PERMITS :
In Twp 24 S., R. 37 E., W.M.
Sec. 9 :
1) NE/4NW/4; 1.2 AC. EXIST. 1.5, TRANS. 0.3
2) SE/4NW/4; 22.5 AC. EXIST. 22.5, TRANS. NONE
3) NE/4SW/4; 34.0 AC. EXIST. 37.3, TRANS. 3.3
4) NW/4SW/4; 14.0 AC. EXIST. 15.4, TRANS. 1.4
5) SW/4SW/4; 10.0 AC. EXIST. 10.0, TRANS. NONE
6) SW/4SE/4; 0.0 AC. EXIST. 5.6, TRANS. 5.6
7) NW/4SE/4; 9.0 AC. EXIST. 9.0, TRANS. NONE
8) SW/4SE/4; 9.7 AC. EXIST. 22.5, TRANS. 12.8

Sec. 16 :
1) NE/4NW/4; 5.5 AC. EXIST. 5.5, TRANS. NONE
2) NW/4NE/4; 21.0 AC. EXIST. 21.0, TRANS. NONE
3) NW/4SW/4; 12.5 AC. EXIST. 12.5, TRANS. NONE
4) NE/4SW/4; 1.5 AC. EXIST. 1.5, TRANS. NONE

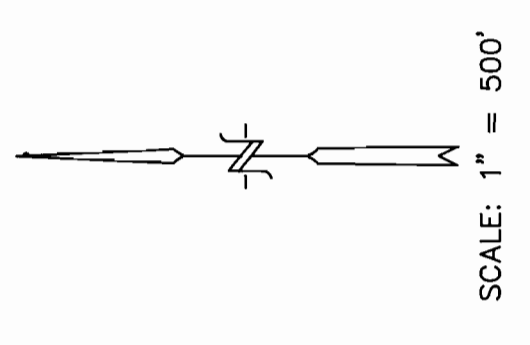
LANDS IRRIGABLE UNDER TRANSFERRED RIGHTS :
Sec. 9 :
1) NW/4NW/4; 0.9 ACRES
2) SE/4NW/4; 9.8 ACRES
3) SW/4NW/4; 12.5 ACRES
5) NW/4SE/4; 10.4 ACRES

Sec. 16 :
1) NE/4NW/4; 1.1 ACRES
2) SW/4NE/4; 0.6 ACRES

DISCLAIMER
I, ALBERT GASCHLER, HEREBY CERTIFY THAT THIS MAP WAS MADE TO BE A PART OF THE APPLICATION FOR A FINAL PROOF OF APPLIC. NO. T-6427. SECTIONAL LINES SHOWN ARE APPROXIMATE AND THIS MAP IS NOT INTENDED FOR ANY OTHER USE AND DOES NOT GUARANTEE LAND OWNERSHIP.



APPLICATION No.: T-6427
EXISTING PERMITS: VOL. 8, PG. 228 & VOL. 7, PG. 6973
PERMIT No.:
EXIST. CERT.: 51733



- LEGEND**
- GOVERNMENT CORNER
 - EXIST. WATER RIGHT
 - EARTH DITCH
 - PIPE LINE
 - PUMP
 - TRANSFERRED EXIST. RIGHT
 - EXIST. WATER RIGHT ACRES
 - PROPOSED ACRES TOTAL
 - EXIST. ACRES TRANSFERRED OUT
 - EXIST. ACRES TRANSFERRED IN

PUMP INFO.
PUMP 1: LAYNE & BOWLER PUMP, US ELEC. MOTOR, 30 HP, 1750 RPM, MOUNTED ON 42" CMP
PUMP 2: WESTERN PUMP, FAIRBANKS-MORSE MOTOR, 25 HP, 1750 RPM, MOUNTED ON 36" CMP
PUMP 3: WESTERN PUMP, US ELEC MOTOR, 30 HP, 1750 RPM, MOUNTED ON 36" CMP

WATER RIGHT EXAMINER'S MAP FOR:
J. B. FRANCHES
GASCHLER & CUMMINGS
CIVIL ENGINEERING—LAND SURVEYING—WATER RIGHTS
P.O. BOX 412 / 786 SUNSET DR., BBS-2101, ONTARIO, OREGON

CHECKED BY: AUS	DRAWN BY: BOB JR.	APPROVED BY: AUS
DATE: 9-30-93	DRAWING No. W05692-0529	REVISED:
SHEET 1 OF 3	JOB No. WO-5692	BK. PG.

FINAL PROOF