

TILLAMOOK COUNTY

1" = 2000'

This map was prepared for assessment purposes only

& INDEX

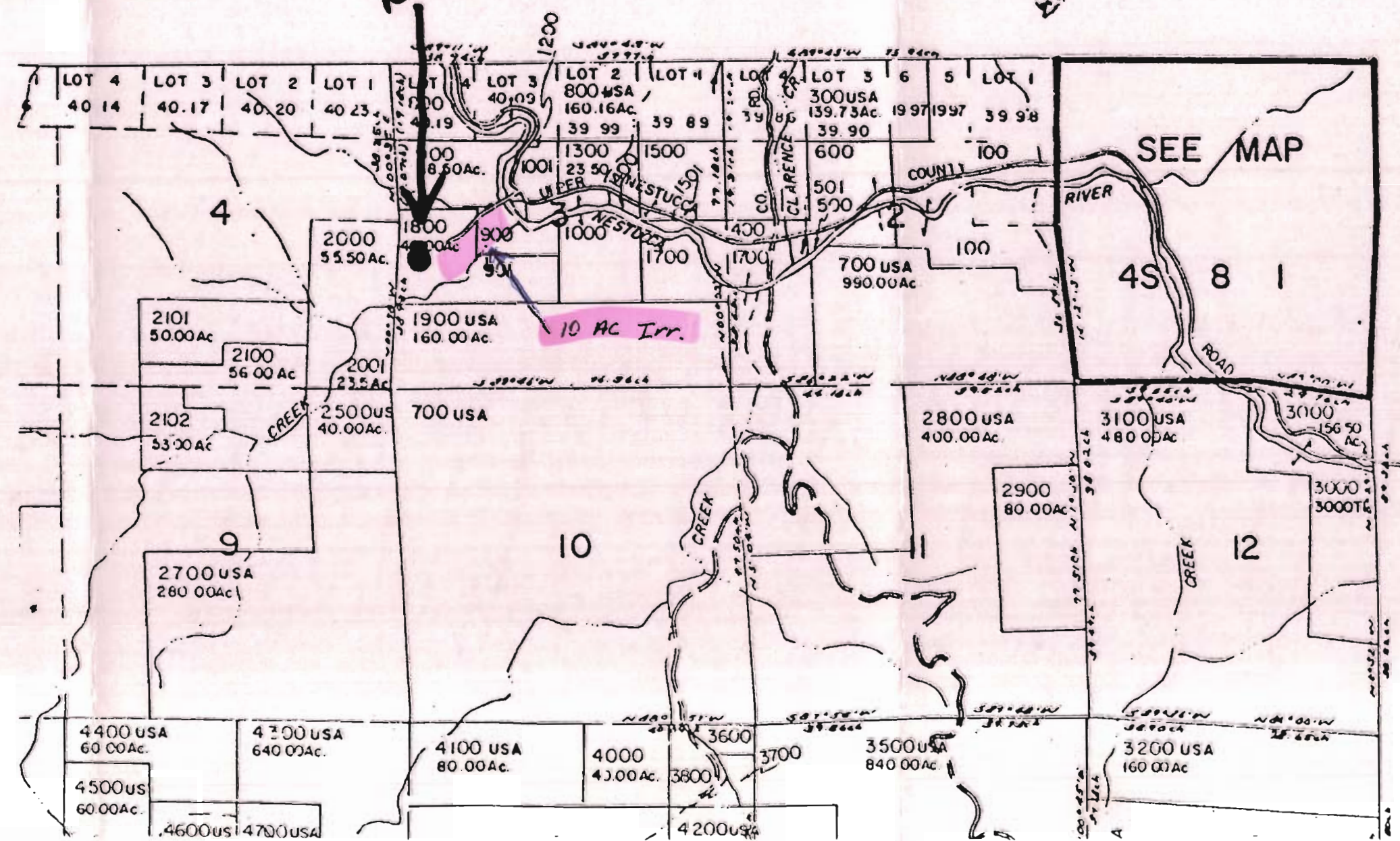
Application No. R-76158  
Permit No.

RECEIVED  
DEC 30 1994  
WATER RESOURCES DEPT.  
SALEM, OREGON

Application No. P-86950  
Permit No.

RECEIVED  
DEC 30 1994  
WATER RESOURCES DEPT.  
SALEM, OREGON  
CANCELLED  
2600  
1600  
1170  
1801  
101  
200  
3900

SEE MAP RES. 8



SEE MAP 4S 7