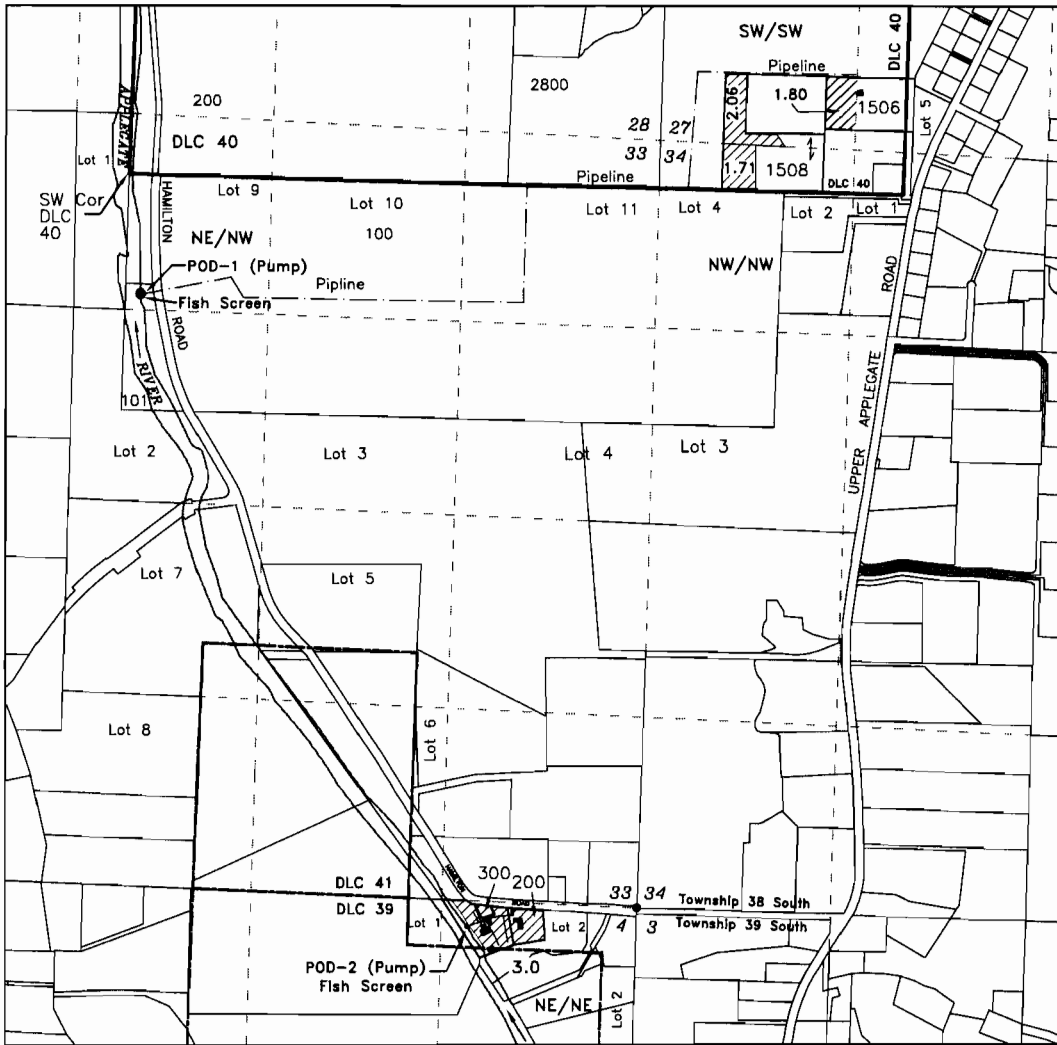


# APPLICATION TO USE STORED WATER

IN THE NAME OF: APPLGATE IRRIGATION COPRORATION  
 TOWNSHIP 38 & 39 SOUTH, RANGE 3 WEST, W.M.  
 JACKSON COUNTY, OREGON

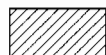


### POINTS OF DIVERSION

POD-1 - NE/NW, Lot 9, 820 feet South & 110 feet East from the SW corner of DLC 40, Section 33 Township 38S Range 3W, WM

POD-2 - NE/NE, Lot 2, 175 feet South & 1160 feet West from the NE corner of Section 4, Township 39S Range 3W, WM

SOURCE - Applegate Lake Reservoir under Permit R-7810 and Bureau of Reclamation Contract - 09XX101703



Place of Use 8.57 Acres - Irrigation

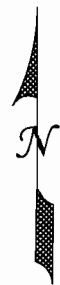
**RECEIVED**

APR 09 2012

WATER RESOURCES DEPT.  
 SALEM, OREGON

This map is not intended to provide legal dimensions or locations of property ownership lines

Base map - Jackson County GIS on 2005 FSA & 2010 Google aerial photo overlay for assumed best fit



Scale

1" = 1320'

Drawn 3/23/2012 n.e.d.

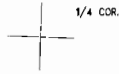
S-87796

IMPORTANT  
THIS MAP FOR ASSESSMENT  
AND TAXATION PURPOSES  
ONLY

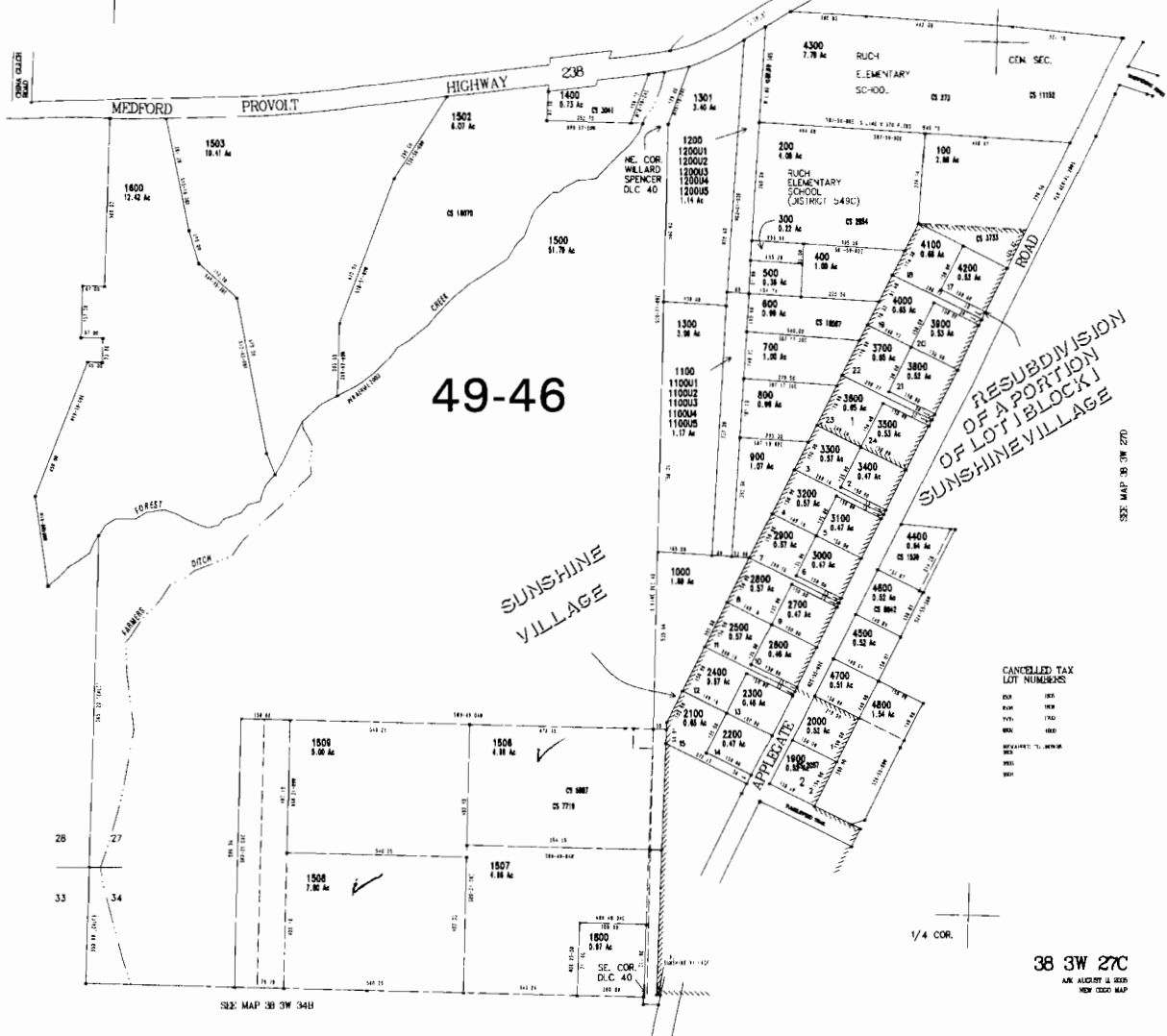
SW 1/4 SECTION 27 T.36S R.3W. W.M.  
JACKSON COUNTY

38 3W 27C

SCALE: 1 INCH = 200 FEET  
SEE MAP 38 3W 27B



SEE MAP 38 3W 28



SEE MAP 38 3W 27D

CANCELLED TAX  
LOT NUMBERS  
800 800  
900 900  
1000 1000  
1100 1100  
1200 1200  
1300 1300  
1400 1400  
1500 1500  
1600 1600  
1700 1700  
1800 1800  
1900 1900  
2000 2000  
2100 2100  
2200 2200  
2300 2300  
2400 2400  
2500 2500  
2600 2600  
2700 2700  
2800 2800  
2900 2900  
3000 3000  
3100 3100  
3200 3200  
3300 3300  
3400 3400  
3500 3500  
3600 3600  
3700 3700  
3800 3800  
3900 3900  
4000 4000  
4100 4100  
4200 4200  
4300 4300  
4400 4400  
4500 4500  
4600 4600  
4700 4700  
4800 4800  
4900 4900  
5000 5000  
5100 5100  
5200 5200  
5300 5300  
5400 5400  
5500 5500  
5600 5600  
5700 5700  
5800 5800  
5900 5900  
6000 6000  
6100 6100  
6200 6200  
6300 6300  
6400 6400  
6500 6500  
6600 6600  
6700 6700  
6800 6800  
6900 6900  
7000 7000  
7100 7100  
7200 7200  
7300 7300  
7400 7400  
7500 7500  
7600 7600  
7700 7700  
7800 7800  
7900 7900  
8000 8000  
8100 8100  
8200 8200  
8300 8300  
8400 8400  
8500 8500  
8600 8600  
8700 8700  
8800 8800  
8900 8900  
9000 9000  
9100 9100  
9200 9200  
9300 9300  
9400 9400  
9500 9500  
9600 9600  
9700 9700  
9800 9800  
9900 9900  
10000 10000

METATILE C:\WORKSPACE\NEW\2007\27\27C.DWG  
CREATED WEDNESDAY, FEBRUARY 14, 2007 9:42 AM BY: KIRKPALJ

RECEIVED

APR 09 2012

WATER RESOURCES DEPT  
SALEM, OREGON

S-87796