

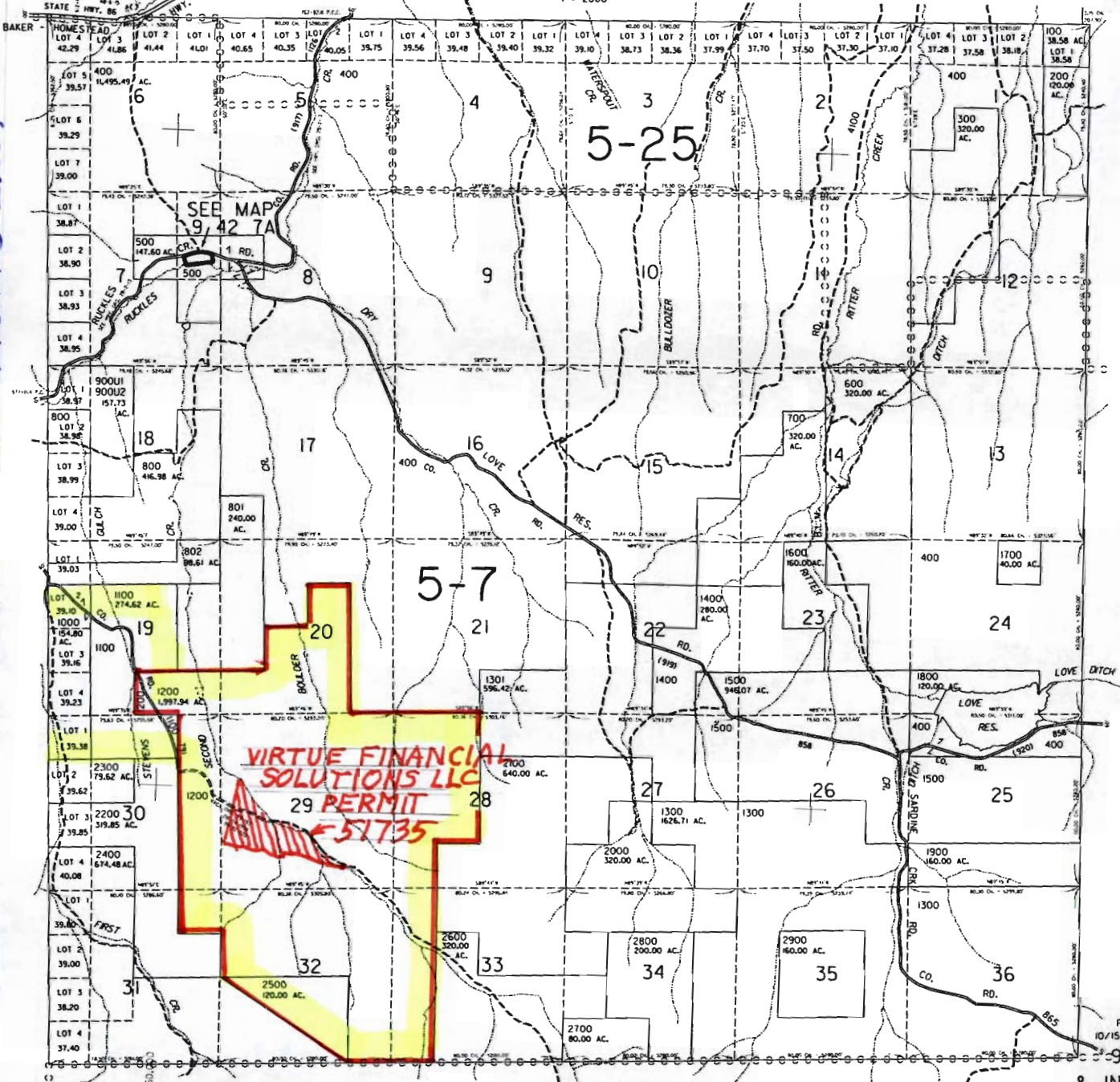
APPLICATION FOR A PERMIT
 TO USE GROUND WATER
 ASSESSORS MAP PARCEL 1200
 VIRTUE FINANCIAL SOLUTIONS LLC

THIS MAP WAS PREPARED FOR
 ASSESSMENT PURPOSE ONLY

T.9S. R.42E. W.M.
 BAKER COUNTY SEE MAP 8 42
 1" = 2000'

9 42
 & INDEX

0 2000 4000
 SCALE IN FEET



SEE MAP 9 43

410,000

Revised
 10/15/01, CS

9 42
 & INDEX

SEE MAP 10 42

RECEIVED

APR 13 2012

WATER RESOURCES DEPT
 SALEM, OREGON

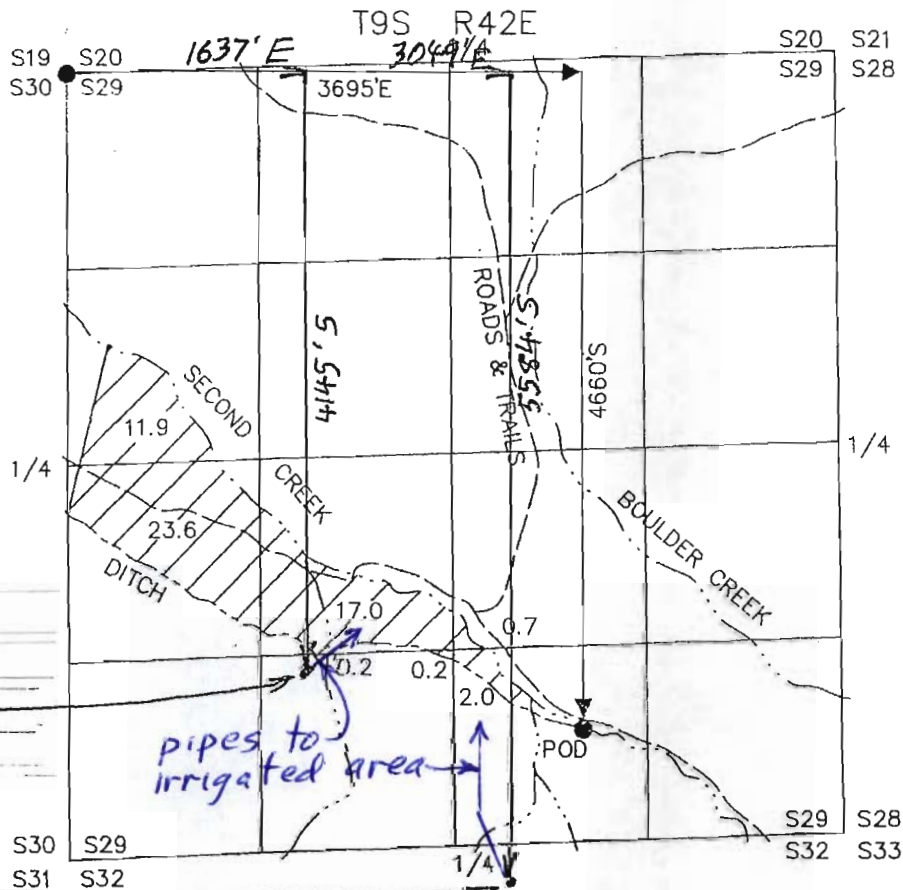
6-17-11

GROUND WATER APPLICATION MAP SUPPLEMENTAL TO PERMIT NO. 51735 VIRTUE FINANCIAL SOLUTIONS

P.O. BOX 477 BAKER CITY OR 97814
PORTION OF TAX LOT 1200



SCALE: 1" = 1320'



WELL #1
ID L-54162
SC 145793
N 44,749290
W 117,599180

SC 206287
N 44,746180
W 117,594360
WELL #2 ID # L-107097

TABLE OF AREAS PER 1/4 1/4 IN SECTION 29, T 9S 42E

- SW 1/4 of NW 1/4, 11.9 Acres
- NW 1/4 of SW 1/4, 23.6 Acres
- NE 1/4 of SW 1/4, 17.0 Acres
- SE 1/4 of SW 1/4, 0.4 acres
- SW 1/4 of SE 1/4, 2.0 acres
- NW 1/4 of SE 1/4, 0.7 acres

RECEIVED
APR 13 2012
WATER RESOURCES DEPT
SALEM, OREGON

~~617551~~
617551