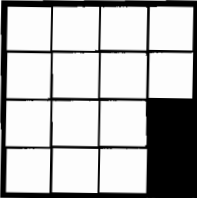


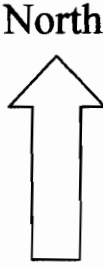
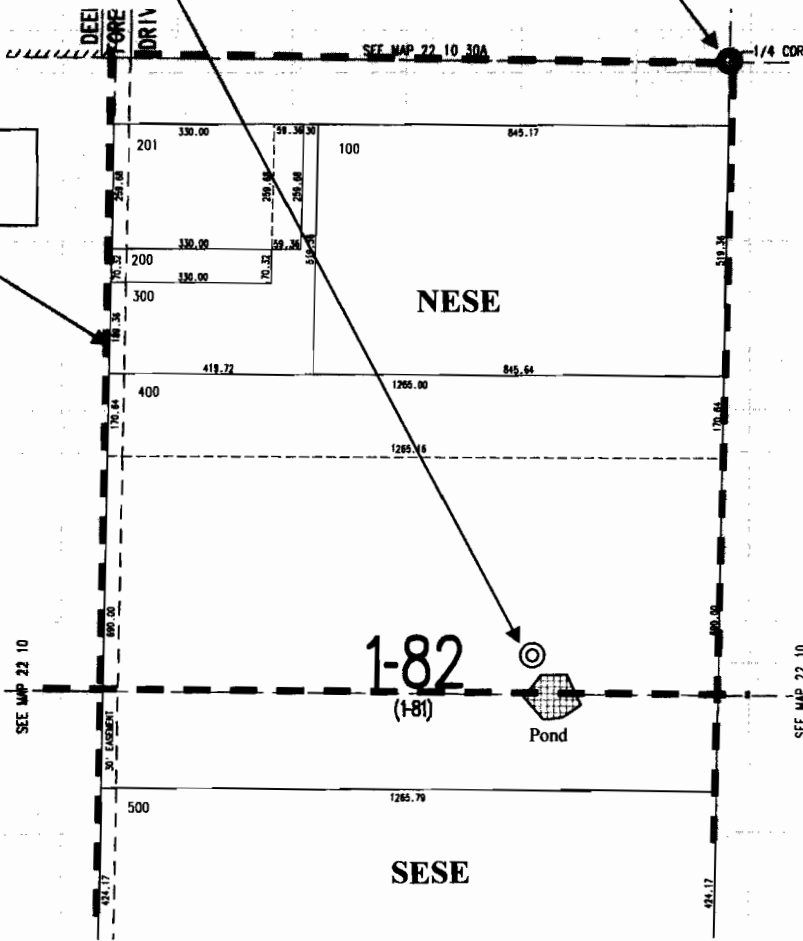
Proposed POD 500 feet West, 1,260 feet South of East quarter marker.

East quarter marker



T22S, R10E
Section 30

Quarter-Quarter section boundaries.



RECEIVED
APR 13 2012
WATER RESOURCES DEPT
SALEM, OREGON

Ground Water Application Map for John M. Lipkowitz (Tax Lot 400)

Proposed Place of Use Approximate Well Location Approximate Marker Location

1 inch equals 400 feet

April 11, 2012

John A. Short
Water Right Services, LLC
P.O. Box 1830
Bend, OR 97709
541-389-2837
johnshort@usa.com
www.oregonwater.us

67-17553