

# MAP TO ACCOMPANY APPLICATION

FOR WATER RIGHT TRANSFER

FROM OREGON DEPARTMENT OF CORRECTIONS

TO OREGON WATER RESOURCES DEPARTMENT

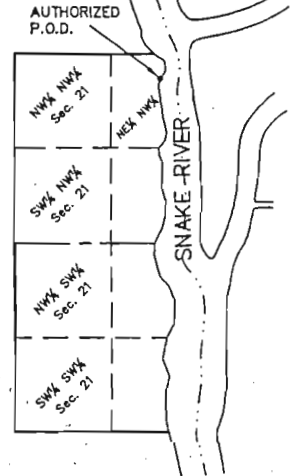
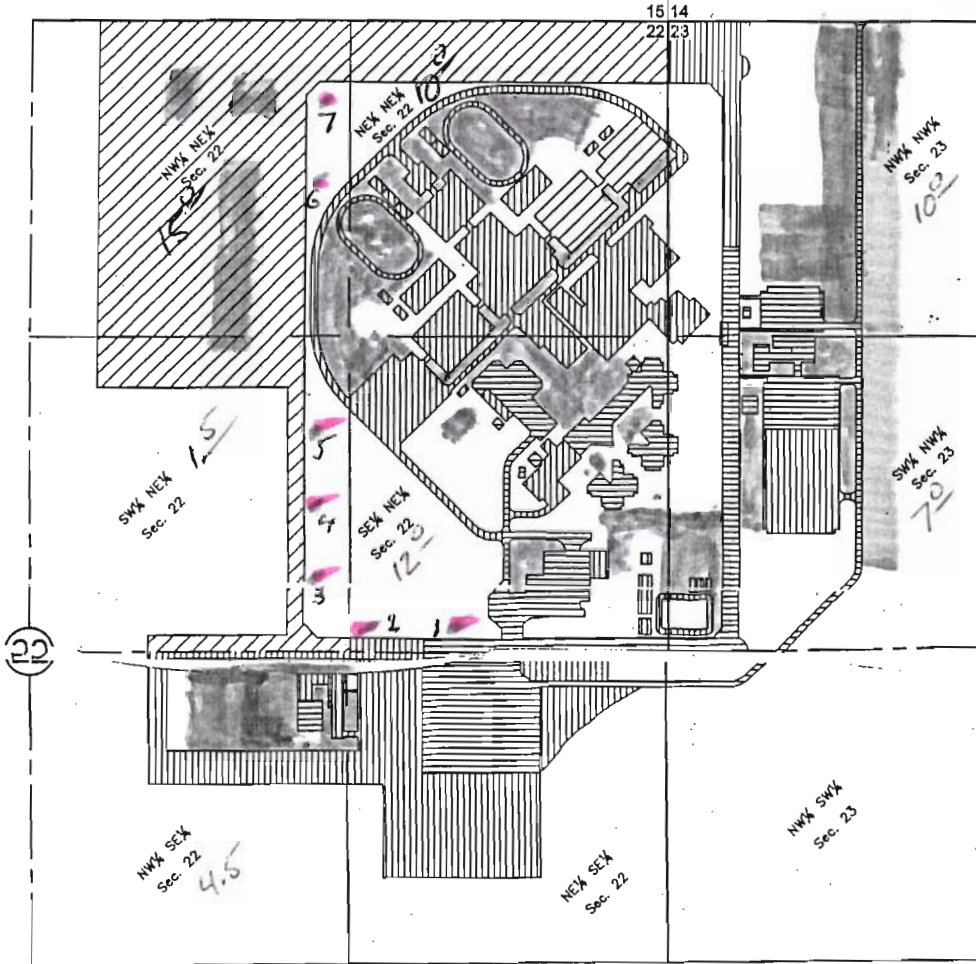
**RECEIVED**

APR 16 2012

WATER RESOURCES DEPT  
SALEM, OREGON

T. 17 S., R. 46 E., W.M.

T. 17 S., R. 47 E., W.M.



"FROM" P.O.D.  
SCALE: 1" = 1320'

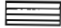


Authorized P.O.D. Located  
350' S. & 1980' E. of the  
NW Corner Sec. 21  
T. 17S., R. 47E., W. M.

SCALE: 1" = 400'

*Proposed wells*  
*Irrigated lawn areas*

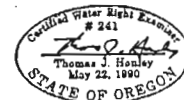
¼ ¼ & Sec.	Available Water Rights (Cert.#75566)	Phase 1 Lost Water Rights	Water Rights Transferred to O.P.R.D.	Water Rights Transfer to Oregon W.R.D.	Remaining Water Rights
NW¼ NE¼ Sec.22	39.2	0.0	27.2	0.6	11.4
SW¼ NE¼ Sec.22	40.0	0.0	7.2	0.2	32.6
NW¼ SE¼ Sec.22	40.0	0.5	0.0	4.5	35.0
NE¼ NE¼ Sec.22	39.4	0.0	10.6	12.1	16.7
SE¼ NE¼ Sec.22	40.0	8.0	0.0	5.8	26.2
NE¼ SE¼ Sec.22	40.0	6.6	0.0	12.4	21.0
NW¼ NW¼ Sec.23	39.2	2.6	0.0	3.1	33.5
SW¼ NW¼ Sec.23	39.8	5.7	0.0	3.2	30.9
NW¼ SW¼ Sec.23	39.8	0.5	0.0	0.0	39.3
Totals	357.4	23.9	45.0	41.9	246.6

## LEGEND

-  Phase 1 Lost Water Rights
-  Transferred Water Rights to Oregon State Parks and Recreation Dept.
-  Transfer Water Rights to Oregon Water Resources Department

Snake River Correctional Institution  
Malheur County  
December 18, 2001  
Amended October 14, 2002

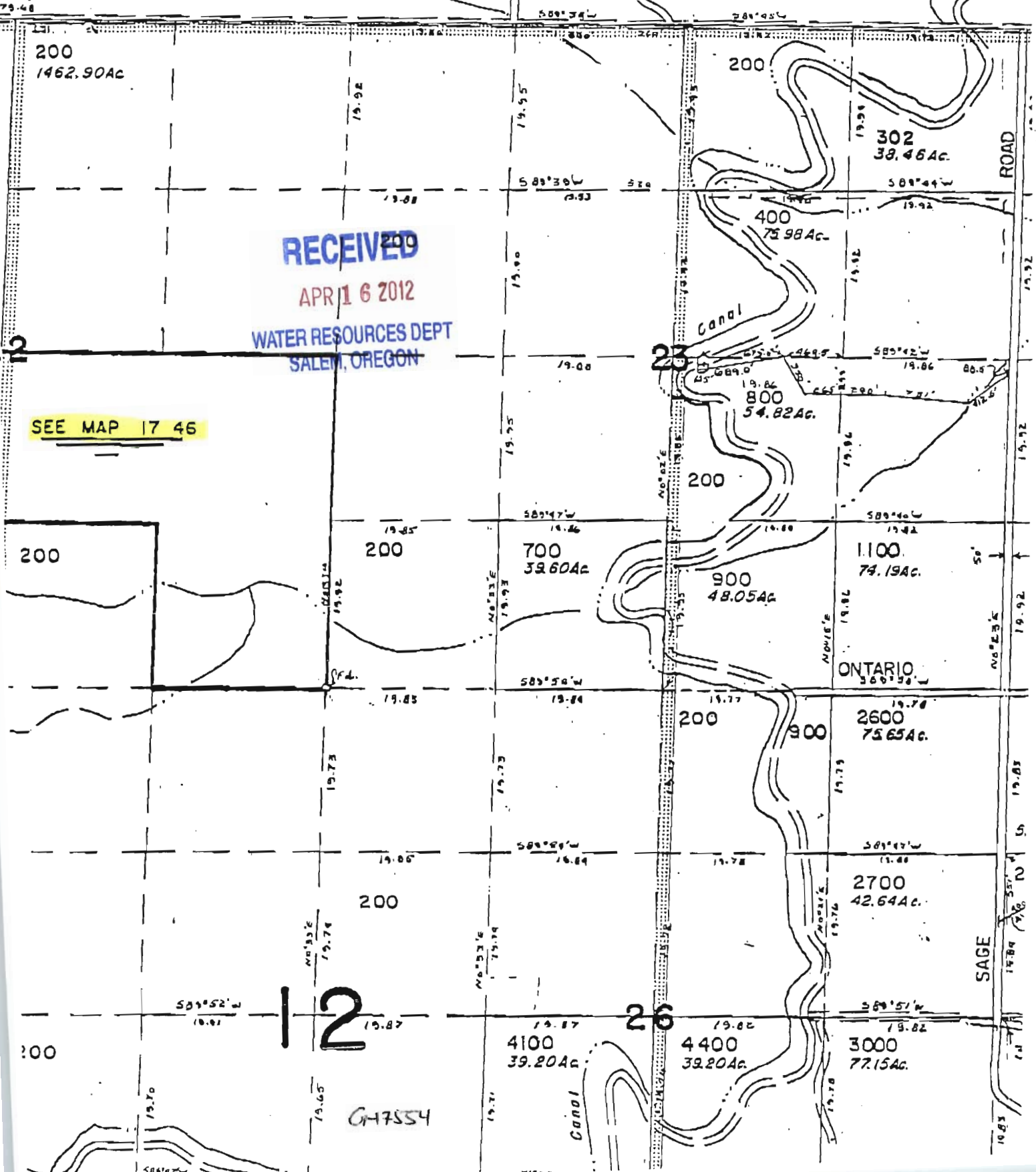
67-7554



Compliments of  
LAND TITLE  
This sketch is furnished  
to assist in property location  
and Land Title does not  
guarantee its accuracy.

# SE/4T.17S. R.46E.W.M. MALHEUR COUNTY

SCALE 1" = 1000'  
SEE MAP 17 46



**RECEIVED**  
APR 16 2012  
WATER RESOURCES DEPT  
SALEM, OREGON

SEE MAP 17 46

12

26

CH7554