

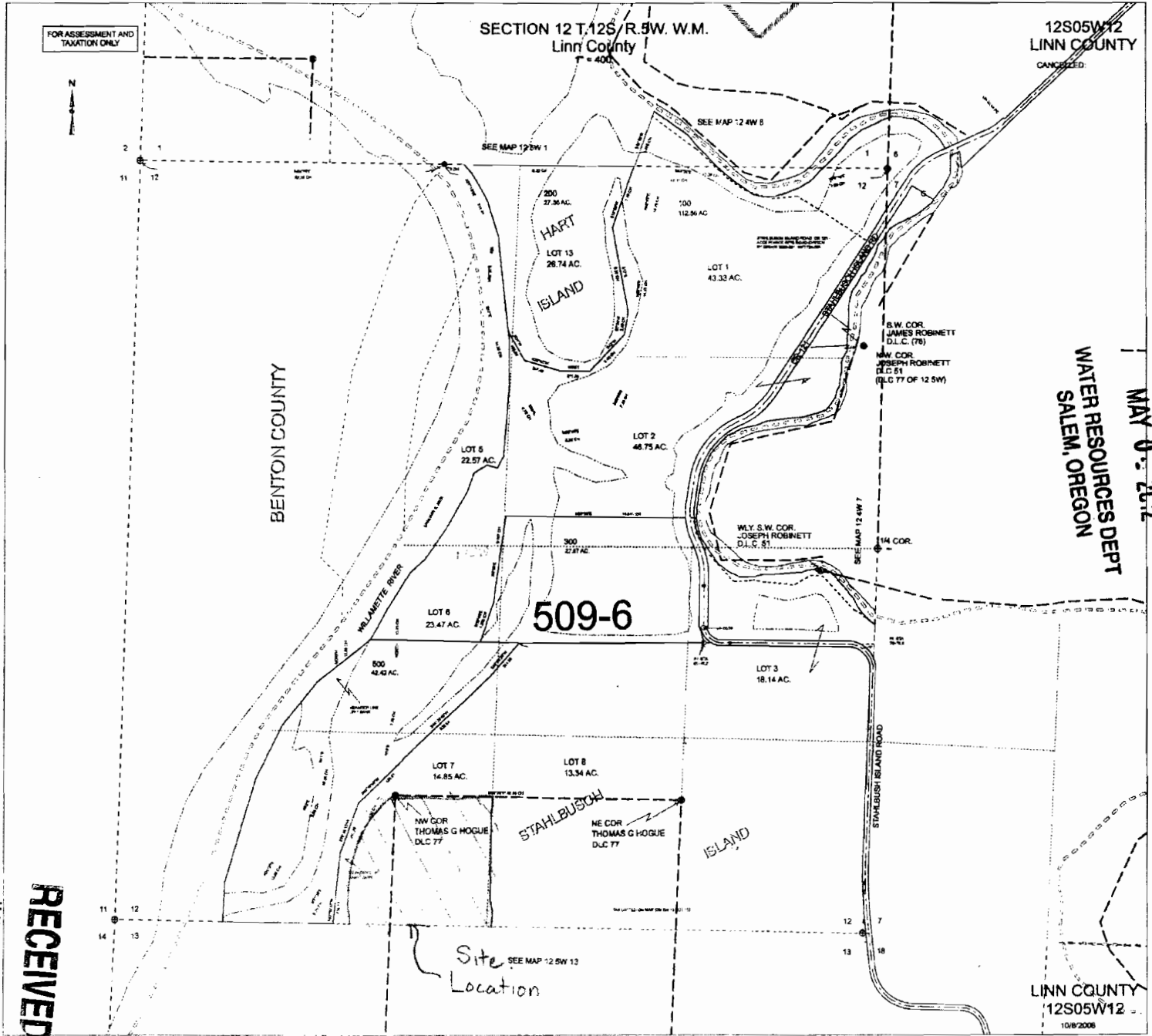
G-17560

Approx 111=1000'

WATER RESOURCES DEPT  
SALEM, OREGON

JUN 06 2012

RECEIVED



12S05W12  
LINN COUNTY  
CANCELLED

WATER RESOURCES DEPT  
SALEM, OREGON

MAY 06 2012

RECEIVED

LINN COUNTY  
12S05W12  
10/8/2008



RECEIVED

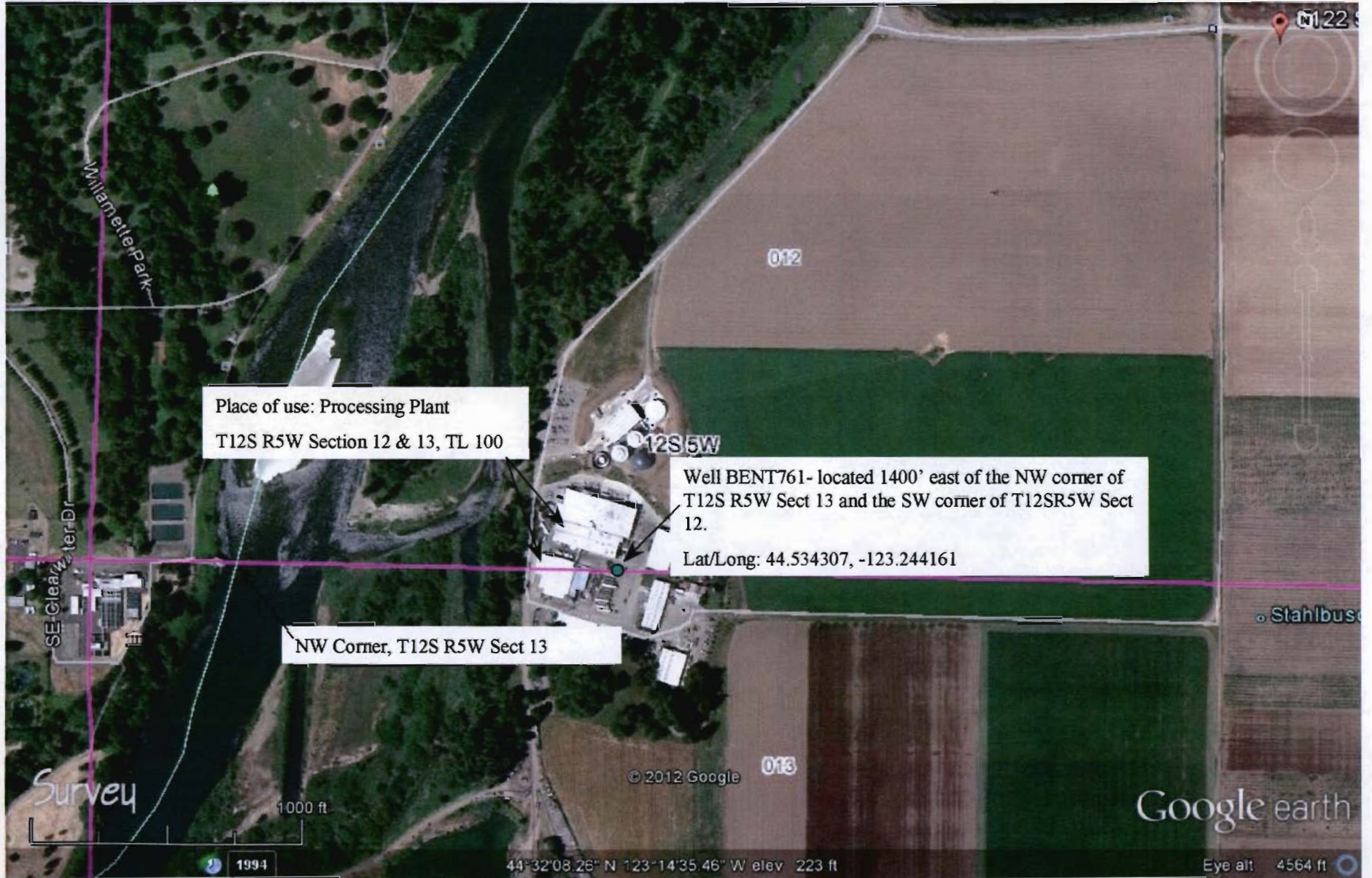
JUN 06 2012

WATER RESOURCES DEPT  
SALEM, OREGON

WK&K Land, Ltd. Industrial Water Right Application

T12S R5W Sect 12

012



Place of use: Processing Plant  
T12S R5W Section 12 & 13, TL 100

Well BENT761- located 1400' east of the NW corner of  
T12S R5W Sect 13 and the SW corner of T12SR5W Sect  
12.  
Lat/Long: 44.534307, -123.244161

NW Corner, T12S R5W Sect 13

Survey

1000 ft

© 2012 Google

013

Google earth

1994

44°32'08.26" N 123°14'35.46" W elev 223 ft

Eye alt 4564 ft