

1/4 SECTION CORNER

36 31

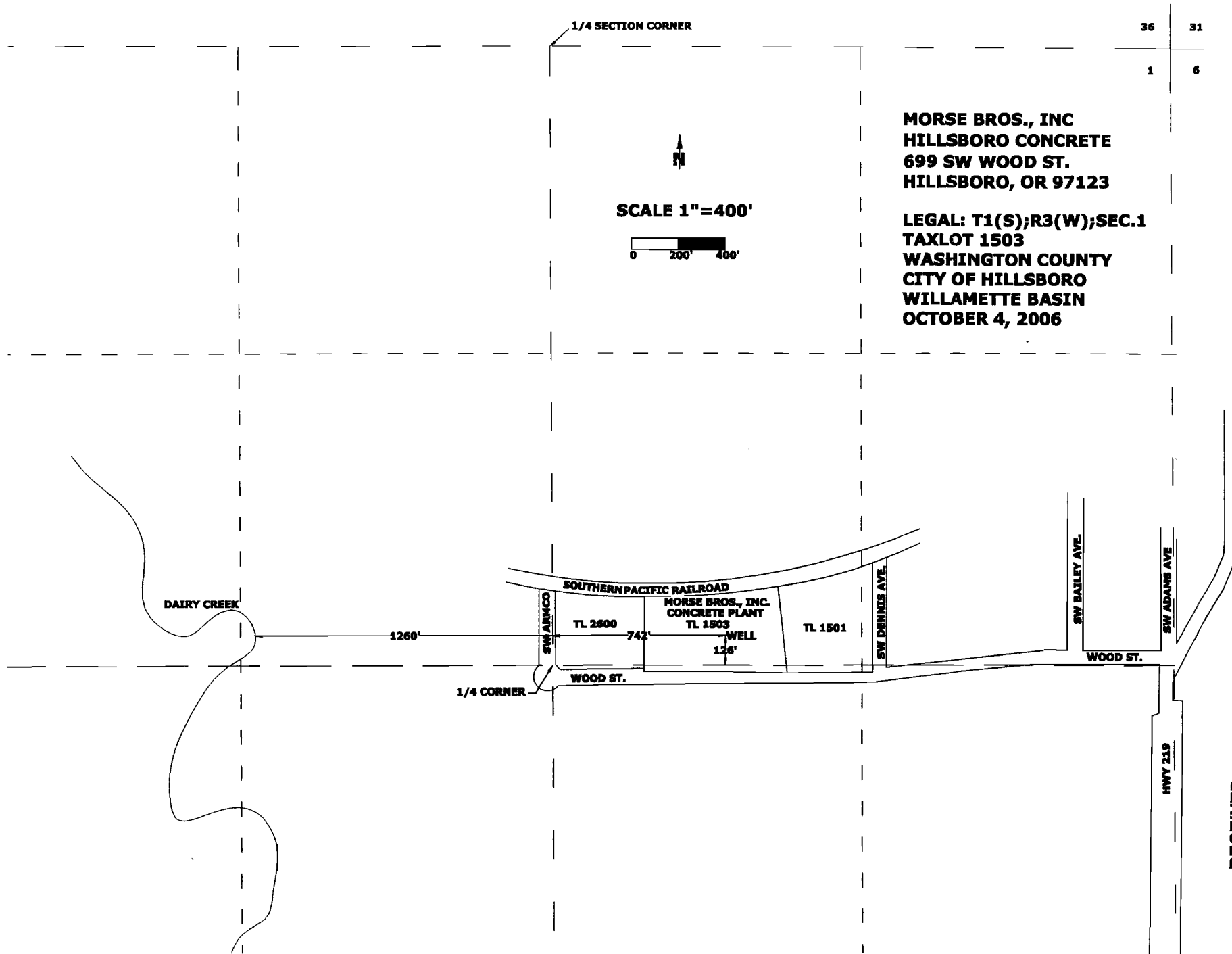
1 6

**MORSE BROS., INC  
HILLSBORO CONCRETE  
699 SW WOOD ST.  
HILLSBORO, OR 97123**

**LEGAL: T1(S);R3(W);SEC.1  
TAXLOT 1503  
WASHINGTON COUNTY  
CITY OF HILLSBORO  
WILLAMETTE BASIN  
OCTOBER 4, 2006**



**SCALE 1"=400'**



**RECEIVED**

OCT 12 2006

WATER RESOURCES DEPT  
SALEM, OREGON