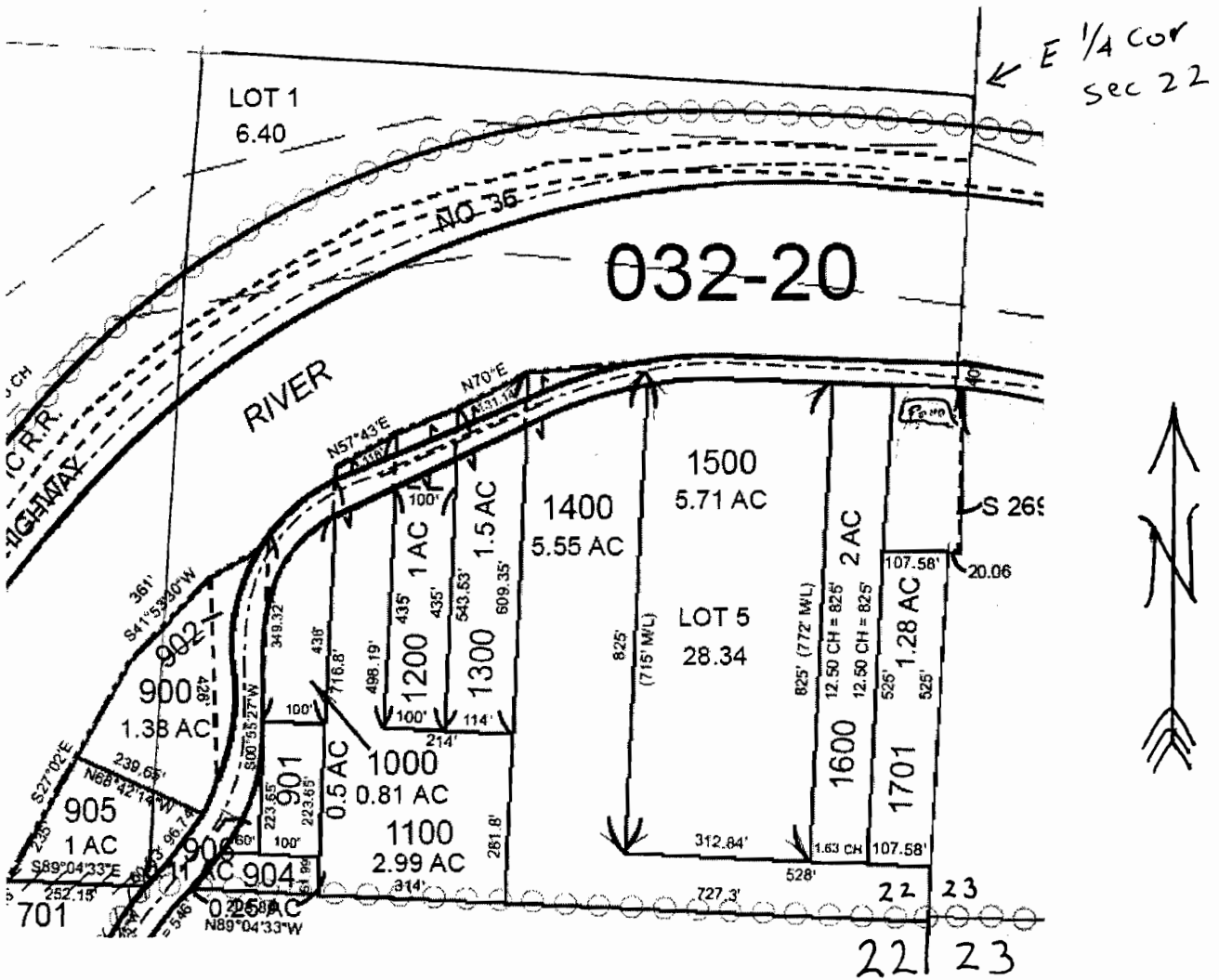


T 17 S, R 10 W Sec 22

Pond in NE, SE and very slightly in NW SW sec 23

scale 1" = 300'

TL 1700



Center of Pond 425 ft South,
 and 50 ft West of E 1/4 corner
 section 22

R87817

RECEIVED

JUN 1 2 2012

WATER RESOURCES DEPT
SALEM OREGON