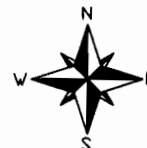


# WATER RIGHTS APPLICATION MAP

Section 8, T1S, R2W, WM  
WASHINGTON COUNTY, OREGON  
WILLAMETTE RIVER BASIN

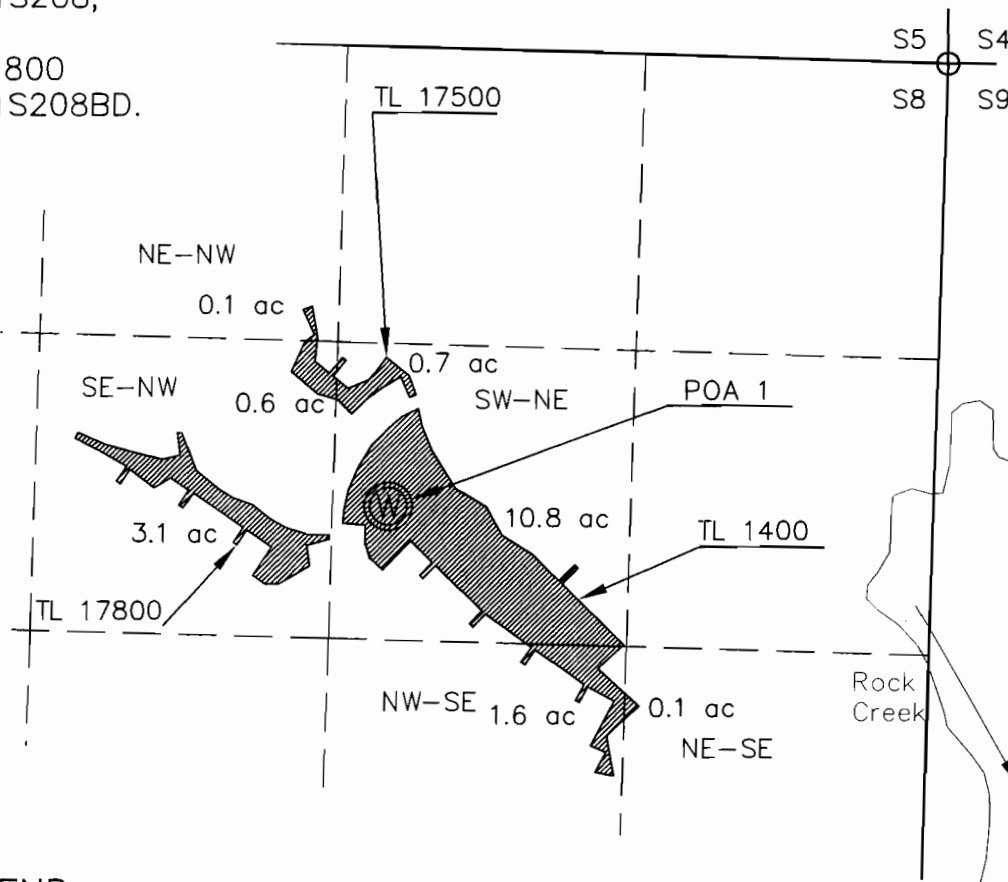
PREPARED FOR:  
Edwards Meadows HOA  
PO Box 33  
Hillsboro, OR 97123



### Tax Lots (TL):

1400  
of Tax Map 1S208;

17,500 & 17,800  
of Tax Map 1S208BD.



**RECEIVED**

JUL 09 2012

WATER RESOURCES DEPT  
SALEM, OREGON

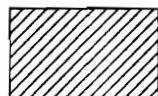
### LEGEND



DLC CORNER

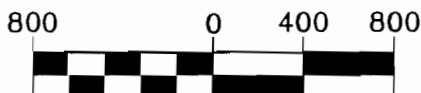


WELL LOCATED 1970' SOUTH AND 2450' WEST OF  
THE NW COR. OF SECTION 8.

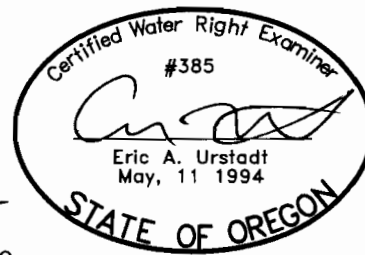


PROPOSED IRRIGATION AREA

*NE updated by WRS per direction from August. AC 7/10/2012*



1 inch = 800 ft.



EXPIRES 6/30/2012

### NOTE:

THE PIPELINES LOCATIONS ARE NOT KNOWN, BUT ARE WELL WITHIN THE EDWARDS MEADOWS SUBDIVISIONS THAT ARE SERVED BY THE EDWARDS MEADOWS HOA, THE FUTURE RIGHT HOLDER.

THIS MAP WAS PREPARED FOR THE PURPOSE OF IDENTIFYING THE LOCATION OF A WATER RIGHT ONLY AND IS NOT INTENDED TO PROVIDE LEGAL DIMENSIONS OR LOCATION OF PROPERTY OWNERSHIP LINES.

Project: 312-2-025  
Drawing: 312025E.dwg  
By: EAU  
Checked by: EAU  
Date: 20JUN2012

Z:\Support\Stunt1.tif