

SECTION 14 TOWNSHIP 3 SOUTH, RANGE 4 EAST of the

WILLAMETTE MERIDIAN.

JAN 20 1933  
WATER RESOUR. DIV. U.S. DEPT.  
SALEM, OREGON

83767

Permit # R12531

CLACKAMAS COUNTY  
TAX LOT 3-4E-14-1800

CLACKAMAS COUNTY  
TAX LOT 3-4E-14-2300

EAGLEFERN YOUTH GROUP  
CLACKAMAS COUNTY TAX LOT 3-4E-14-2501

CLACKAMAS COUNTY  
TAX LOT 3-4E-14-2400

CLACKAMAS COUNTY  
TAX LOT 3-4E-14-2500



Set witness  
iron pipe  
10' South of  
bank top

Set witness  
iron pipe

Center of Section line

1/16 m. Section line

1/16 m. Section line

Section 14  
Section 24

N 0° 14' 05" E

N 0° 14' 05" E

N 0° 28' 22" E

N 0° 42' 47" E

Found iron rod

S 89° 31' 40" E

1335.50

S 89° 31' 40" E

1335.50

450.00

1/16 m. Section line

1/16 m. Section line

1307.42

796.17

S 89° 50' 12" E

511.20

1302.65

132.01

2590.97

1295.48

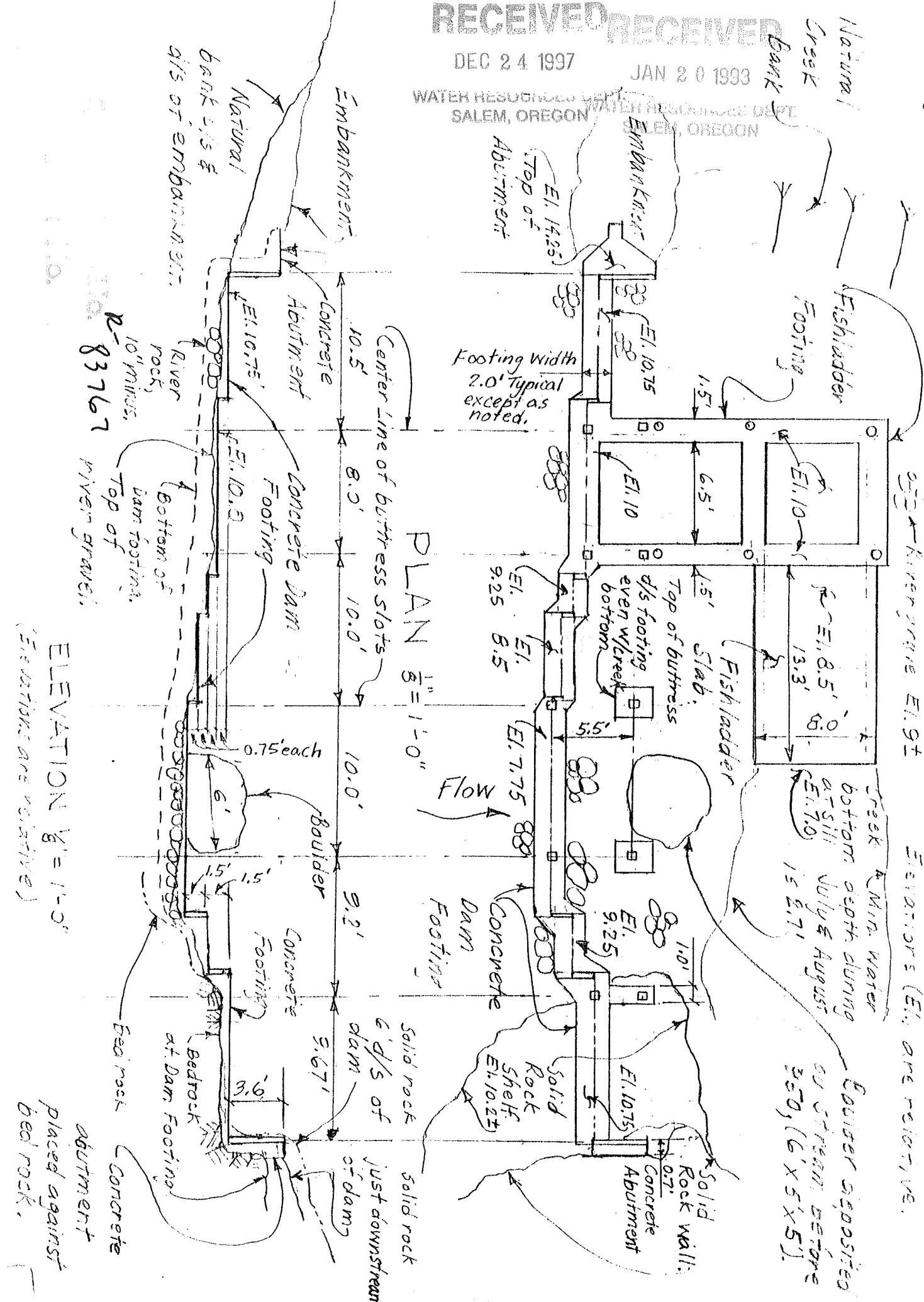
Found B.L.M. Bro



# EAGLE FERRIN YOUTH CAMP DAM & FISHLADDER - FOUNDATION

(WITH DAM & FISHLADDER WALLS REMOVED)

RECEIVED RECEIVED  
 DEC 24 1997 JAN 20 1993  
 WATER RESOURCES DEPT. WATER RESOURCES DEPT.  
 SALEM, OREGON SALEM, OREGON



83767

PLAN 1" = 1'-0"

ELEVATION 1/8" = 1'-0"  
 (ELEVATIONS ARE RELATIVE)

Kinnersup E.I. 9.1

Elevations (E.I.) are relative.

Creek & Min. water bottom depth during at 5:11 PM July & August (E.I. 7.0) 15.27'

Boulder deposited on stream before 3:50, (6' x 5' x 5').

Footing width 2.0' typical except as noted.

Flow

Solid rock just downstream of dam

Bedrock at Dam Footing

Concrete abutment placed against bed rock.

Concrete abutment placed against bed rock.

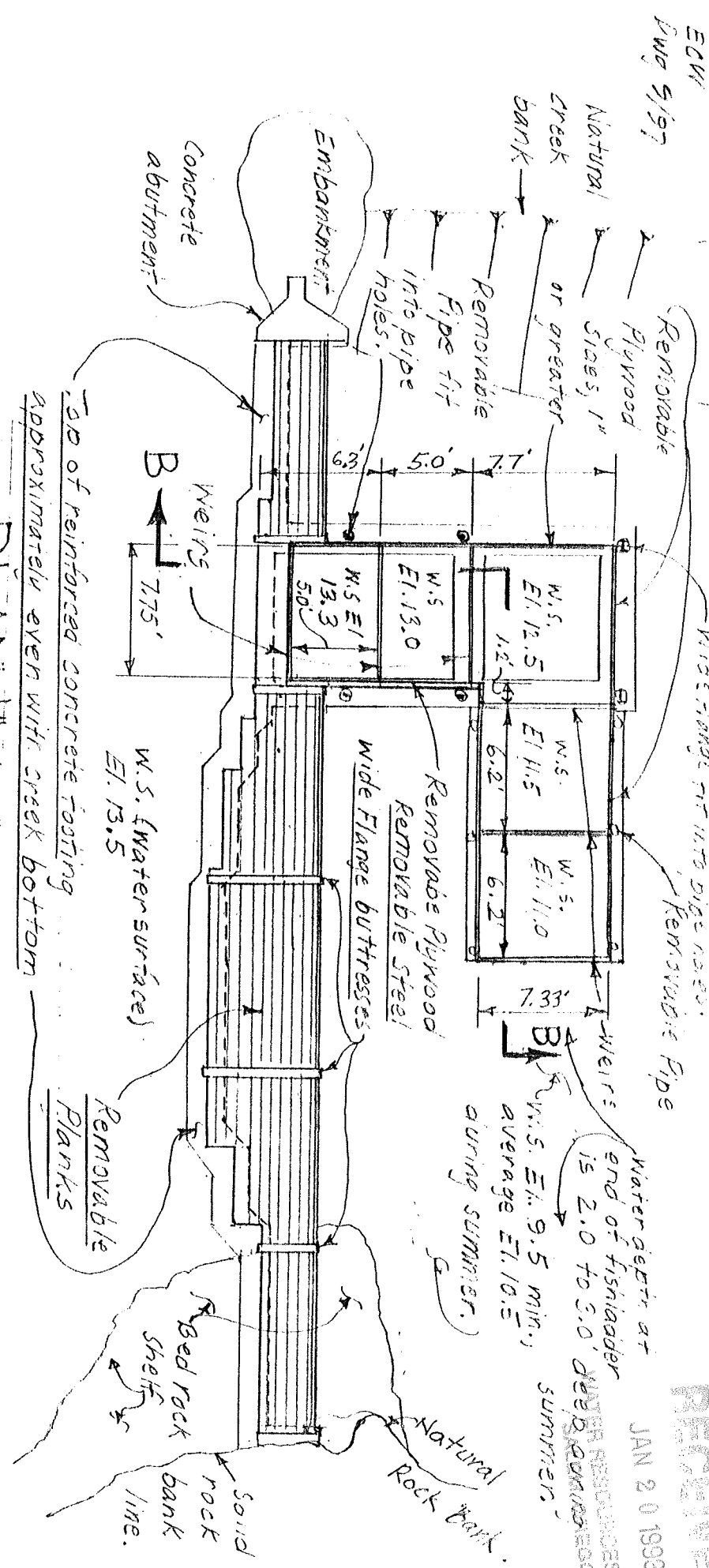
(ELEVATIONS ARE RELATIVE)

DAM & FISH LADDER

(With walls in place)  $\frac{1}{8}'' = 1'-0''$

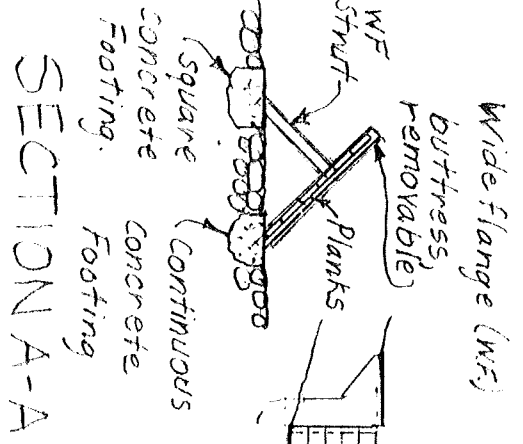
REMOVED  
JAN 20 1893

Dwg 5/97  
ECW



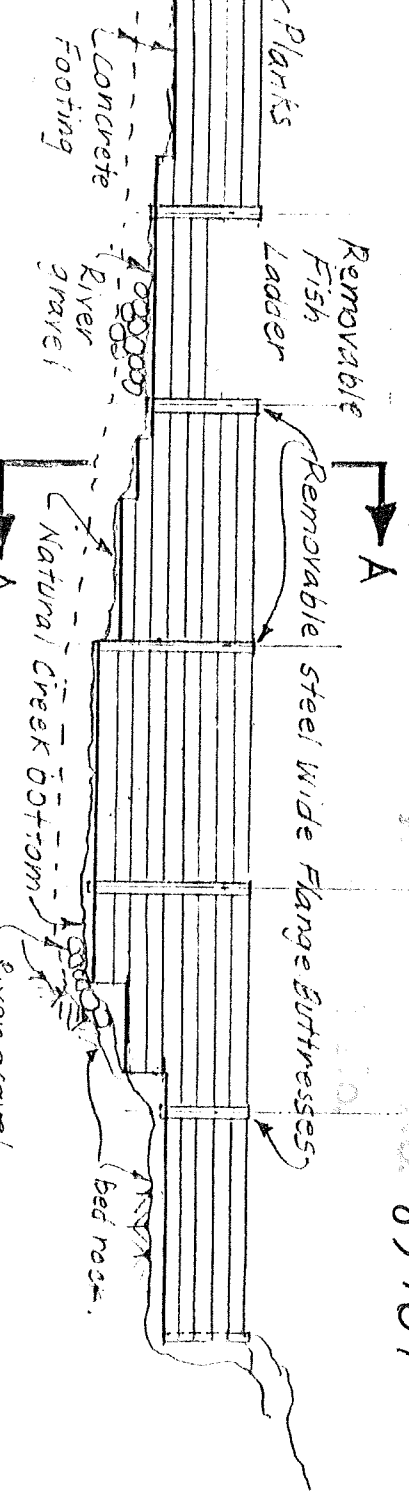
PLAN  $\frac{1}{8}'' = 1'-0''$

Kg3767



ELEVATION  $\frac{1}{8}'' = 1'-0''$

NOTE: All removable members to be placed & removed as recommended by ODFY (Looking Downstream)



Water gate at end of fish ladder 15 2.0 to 3.0' deep. Average El. 10.5 during summer.

WATER RESOURCES DEPT.  
BUREAU OF FISHERIES  
SUMMER

EAGLE FERN  
YOUTH CAMP  
ECN, DWG 9/97

# DAM & DOCK LOCATION

1" = 30' (Approx)

**RECEIVED**

DEC 24 1997

WATER RESOURCES DEPT.  
SALEM, OREGON

Original dam & Fishladder  
built in 1960. Fishladder  
was rebuilt to Oregon  
State Fish & Wildlife  
recommendations  
in 1985.



## SECTION D-D

1" = 30'

Natural  
Creek  
bank

FLOW ↑

Dam placement  
and removal to be  
timed according to  
Oregon State Dept.  
of Fish & Wildlife  
consultation.

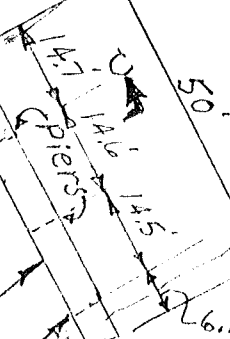
Boulder

Dam abutments

Natural  
solid rock  
creek bank

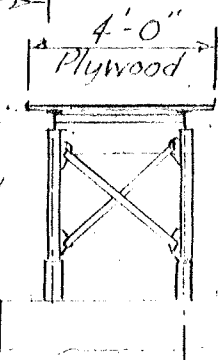
W.S. with  
dam in place

Approximately 70'



Dock placed  
at the last of  
June & removed  
at the last of  
August

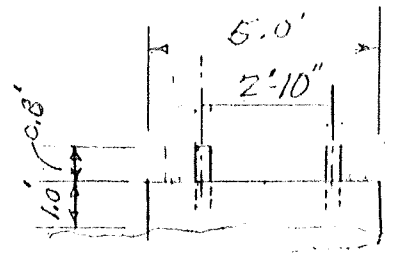
Stream edge  
during summer  
when dam is not  
in place.



Footings for  
this pier are removed  
after August.

FLOW ↑

## SECTION C-C (Dock in Place)



## SECTION C-C (Dock Removed)

1/4" = 1'-0"

**RECEIVED**

JAN 20 1998

WATER RESOURCES DEPT.  
SALEM, OREGON

# SITE PLAN

1" = 30' (Approx)