

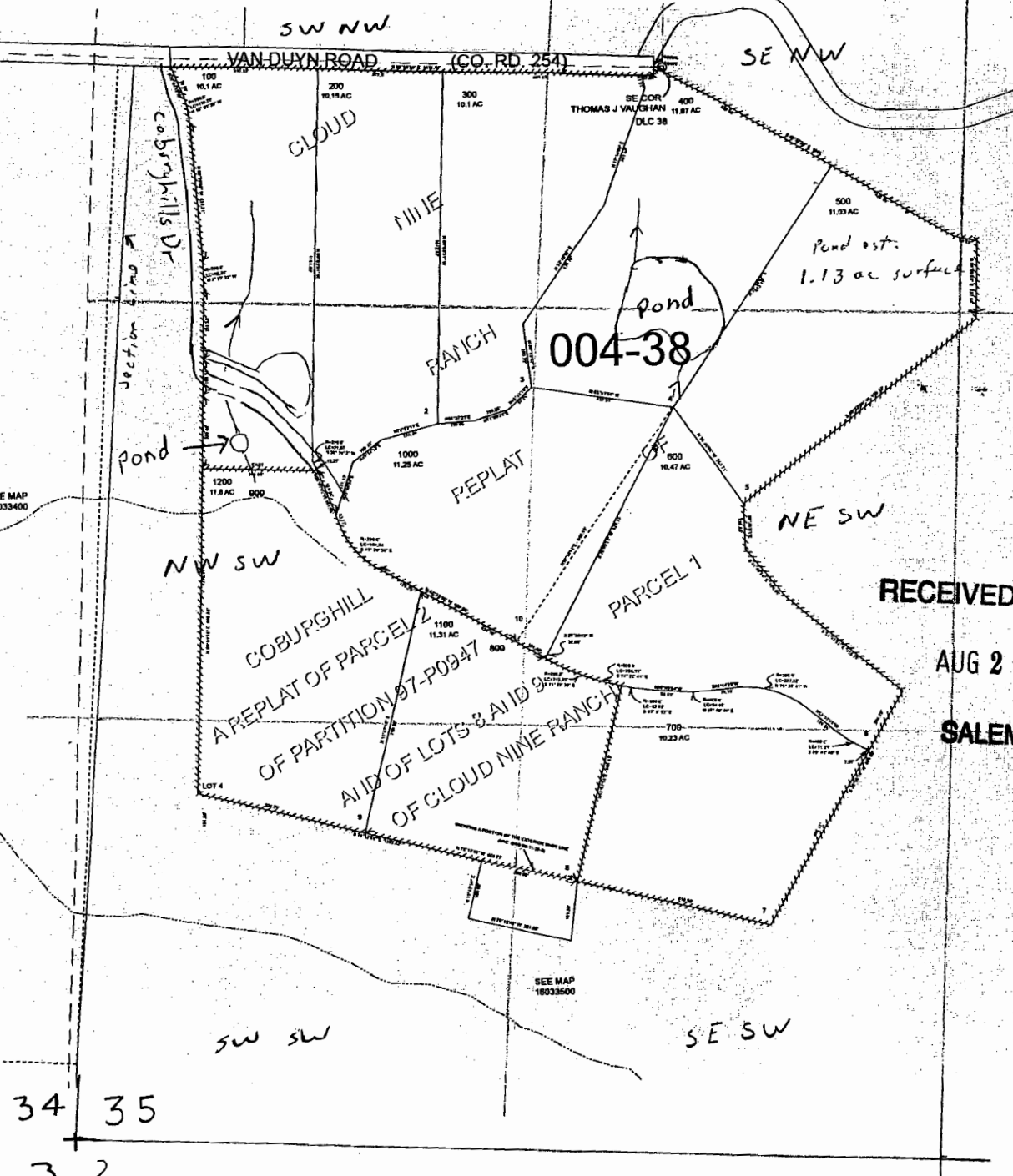
S.W.1/4 SEC.35 T.16S. R.3W. W.M.  
Lane County

Scale 1" = 500'

16033530

GIS DATA  
5/27/2008 2:39:48 PM: kwhg

CANCELLED:  
800  
800



Tucker App

pond in SE NW and  
NE SW sec 35

dam 625' south and  
80' East from  
SE corner DLC 38

1.13 ac surface

Lane County

RECEIVED BY OWRD

AUG 28 2012

SALEM, OR

Todd & Lisa Tucker  
33860 Blackberry Ln  
Eugene OR 97408

R-87836

16033530U

34 35

3 2