

Well #5

To be located 1,320 feet South and 1,315 feet East of the NW corner of Section 11

Well #1

To be located 1,320 feet North and 1,315 feet East of the SW corner of Section 11

Well #6

To be located 1,320 feet South and 1,315 feet West of the NE corner of Section 11

Well #2

To be located 1,320 feet North and 1,315 feet West of the SE corner of Section 11

In T23S R26E W.M.
Section 11: whole section
Tax Lot 102: 641.2 acres
1" = 880 feet

RECEIVED BY OWRD

AUG 31 2012

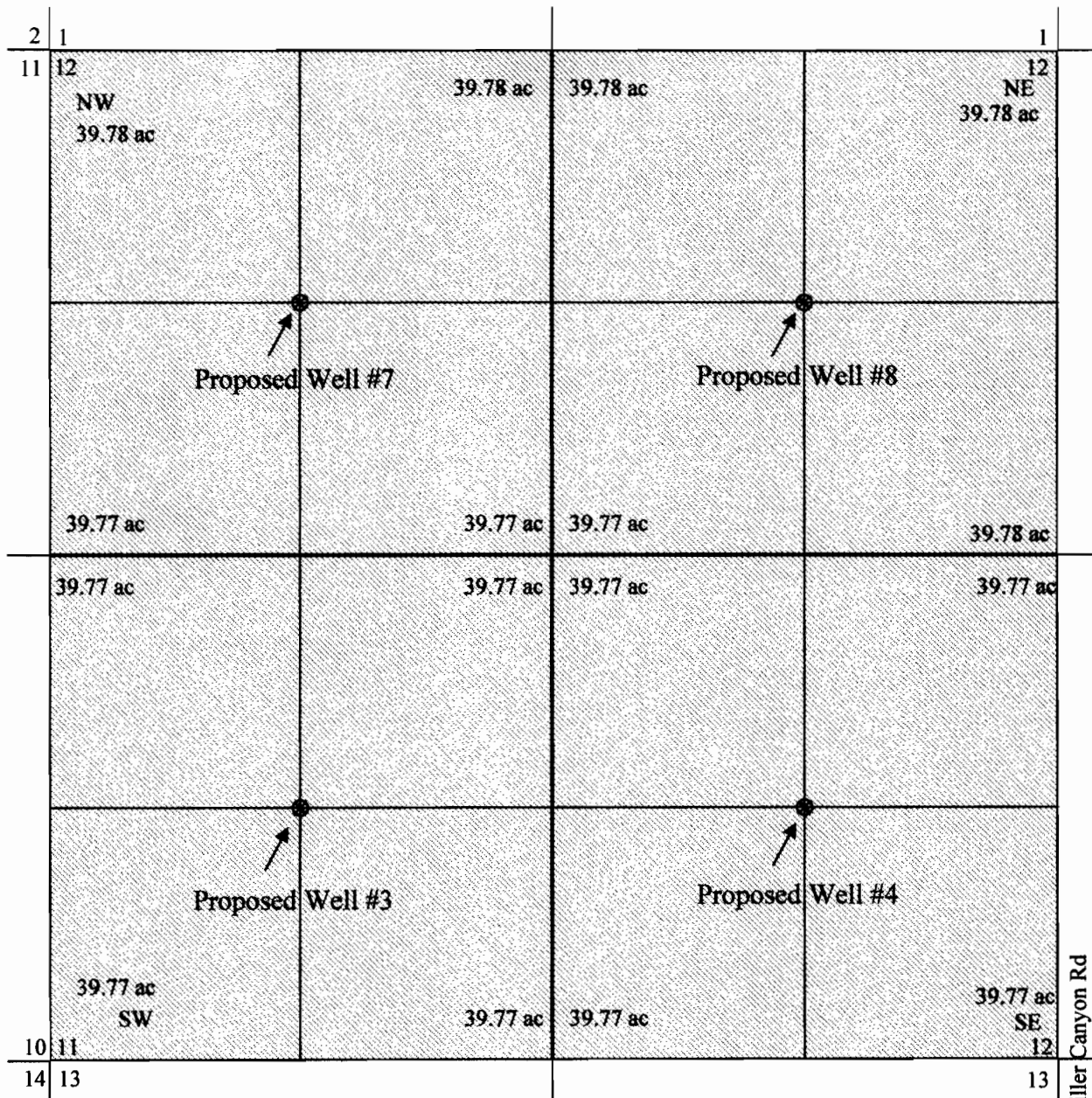
SALEM, OR

G-17581

RECEIVED BY OWRD

JUL 31 2012

SALEM, OR



Well #7

To be located 1,320 feet South and 1,315 feet East of the NW corner of Section 12

Well #3

To be located 1,320 feet North and 1,315 feet East of the SW corner of Section 12

Well #8

To be located 1,320 feet South and 1,315 feet West of the NE corner of Section 12

Well #4

To be located 1,320 feet North and 1,315 feet West of the SE corner of Section 12

RECEIVED BY OWRD

AUG 31 2012

SALEM, OR

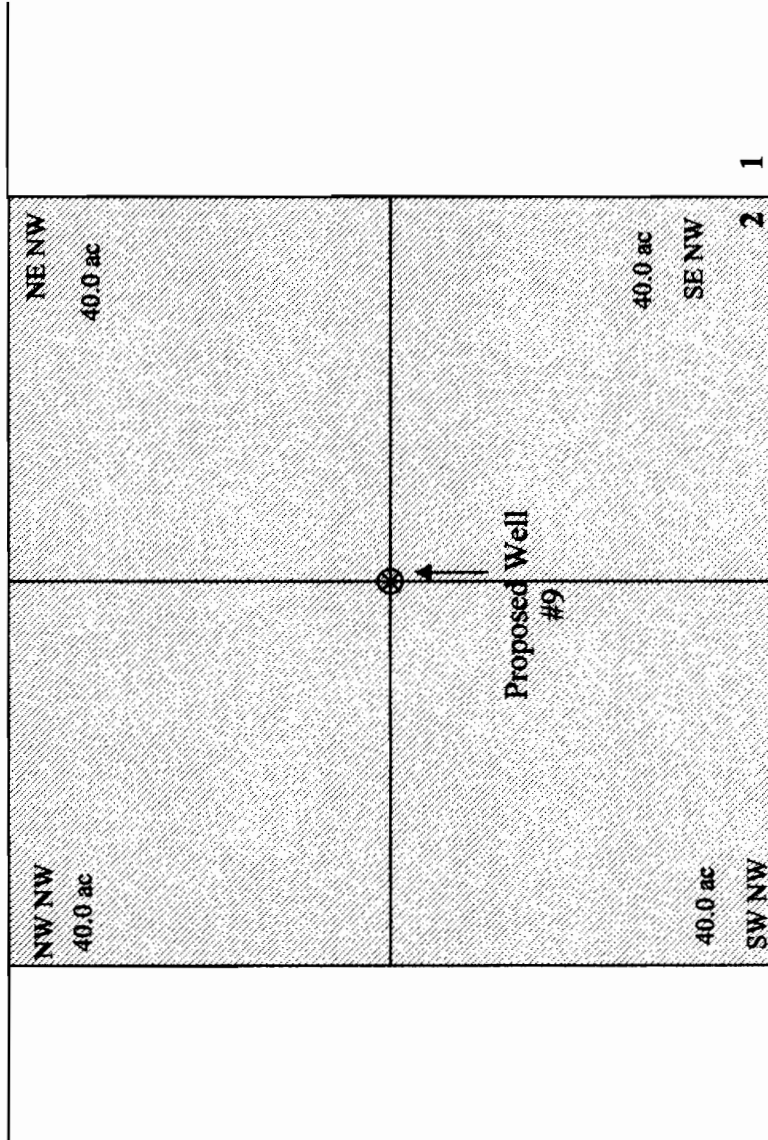
RECEIVED BY OWRD

JUL 31 2012

SALEM, OR

In T23S R26E W.M.
 Section 12: whole section (636.37 acres)
 Tax Lot 2100: 596.37 acres
 Tax Lot 2200: 40.0 acres
 1" = 880 feet

G-1758



Well #9
To be located 1,320 feet North and 1,315 feet West of
the SE corner of Section 2

RECEIVED BY OWRD

AUG 31 2012

SALEM, OR

6-17581

RECEIVED BY OWRD

JUL 31 2012

SALEM, OR

In T23S R26E W.M.
Section 2: SE1/4
Tax Lot 400: 160.0 acres
1" = 660 feet

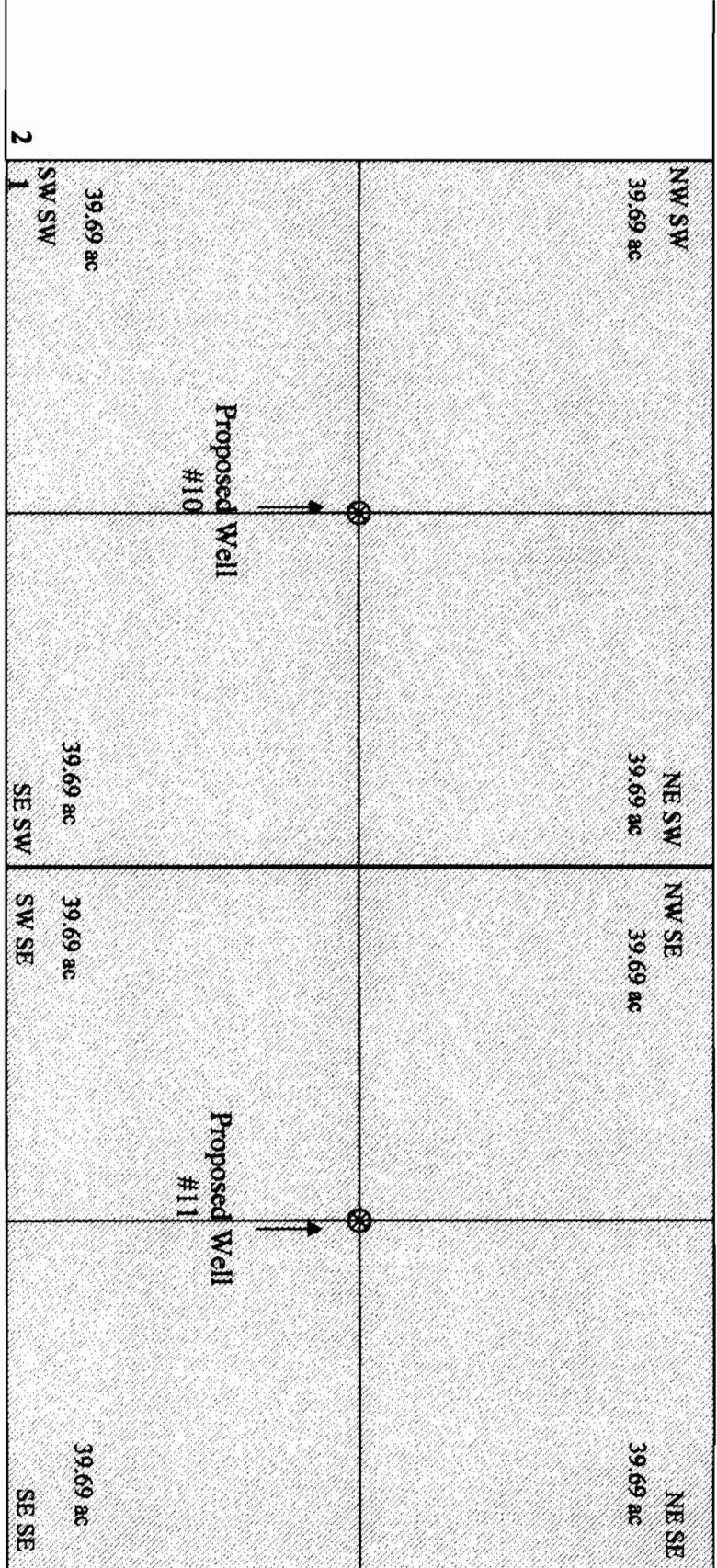
SALEM, OR

JUL 31 2012

RECEIVED BY OWRD
Info 023S R26E W.M.
Section 1: S1/2
Tax Lot 101: 317.58 acres
1" = 660 feet

Well #10
To be located 1,320 feet North and 1,315 feet East of
the SW corner of Section 1

Well #11
To be located 1,320 feet North and 1,315 feet West of
the SE corner of Section 1



Miller Canyon Rd

G-1758r



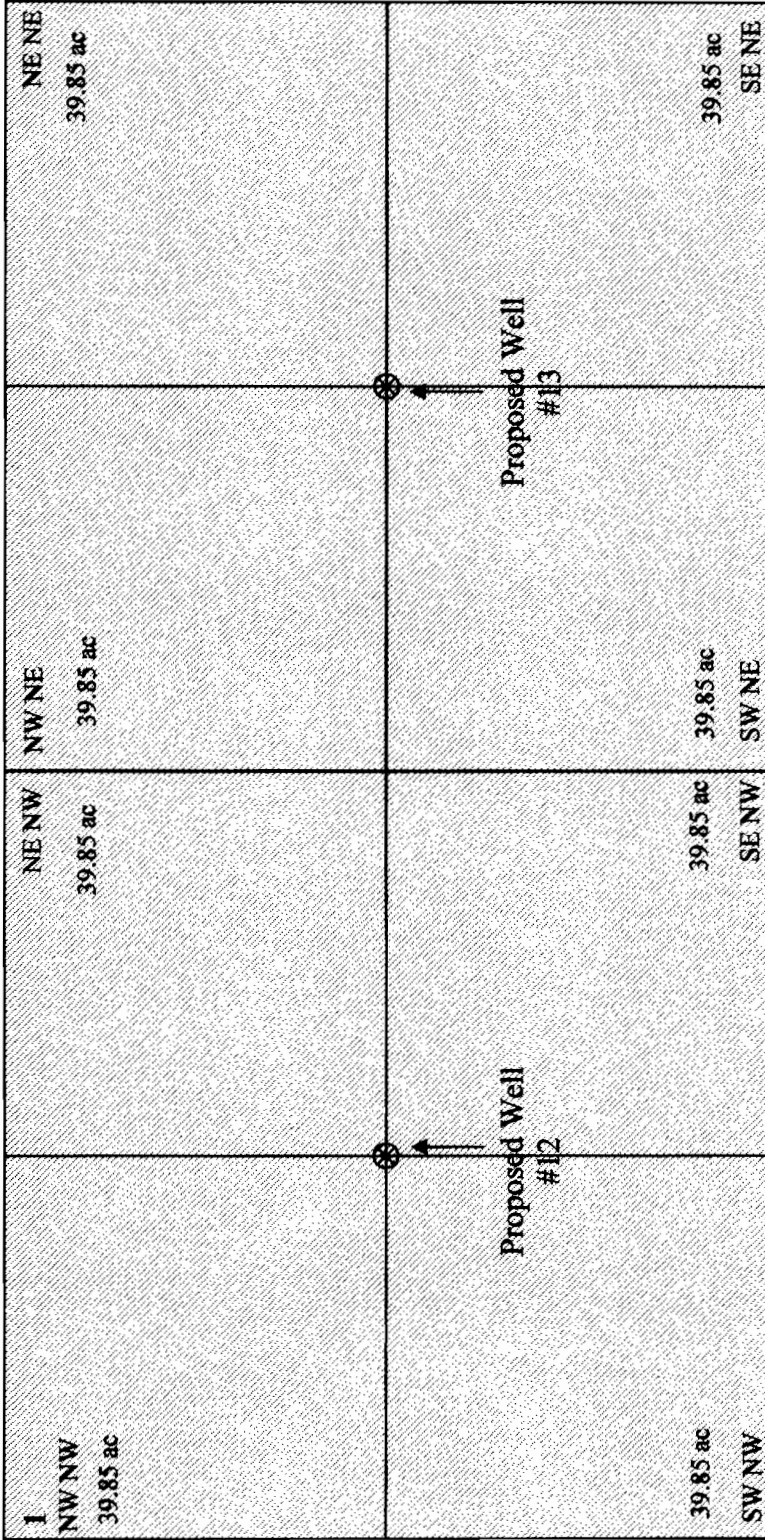
RECEIVED BY OWRD

AUG 31 2012

SALEM, OR



Miller Canyon Rd



Well #12
 To be located 1,320 feet South and 1,315 feet East of
 the NW corner of Section 1

Well #13
 To be located 1,320 feet South and 1,315 feet West of
 the NE corner of Section 1

RECEIVED BY OWRD

AUG 31 2012

SALEM, OR

In T23S R26E W.M.
 Section 1: N1/2
 Tax Lot 100: 318.8 acres
 1" = 660 feet

RECEIVED BY OWRD

JUL 31 2012

SALEM, OR

6-7581

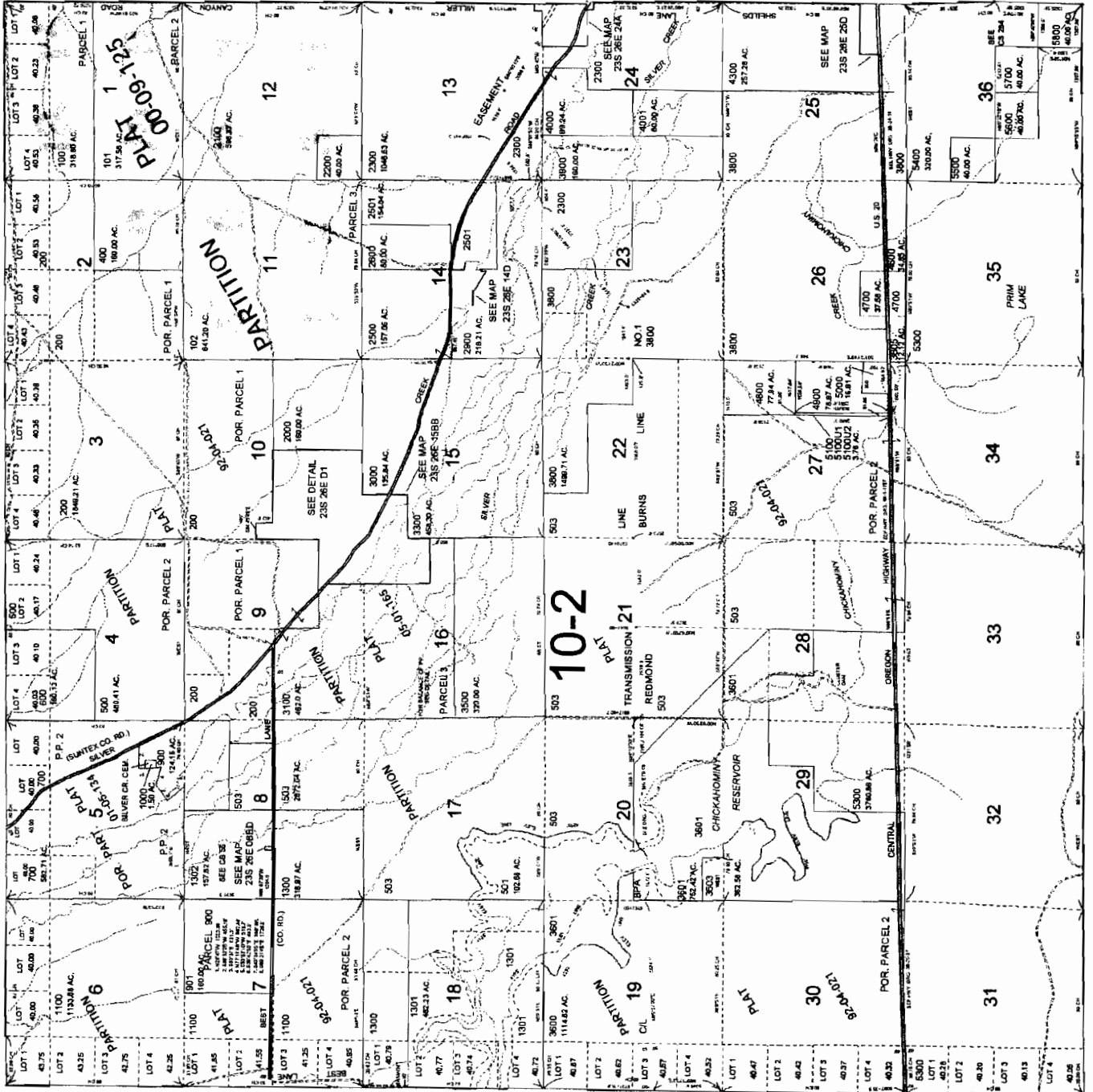
CANCELLED NO.
502
802
1200
1400
1600
2000M1
2400
2600M1
2700
2800
3000M1
3102
3200
3300M1
3602
3604
3800
4100
4200
4301
4400
4500
5200

SEE MAP 23S 27E

T.23S. R.26E. W.M.
HARNEY COUNTY

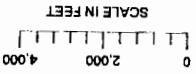
1" = 2000'

SEE MAP 23S 26E



SEE MAP 24S 26E

THIS MAP WAS PREPARED FOR
ASSESSMENT PURPOSE ONLY



RECEIVED BY OWRD

RECEIVED BY OWRD

AUG 31 2012

JUL 31 2012

SALEM, OR

SALEM, OR

G-17581