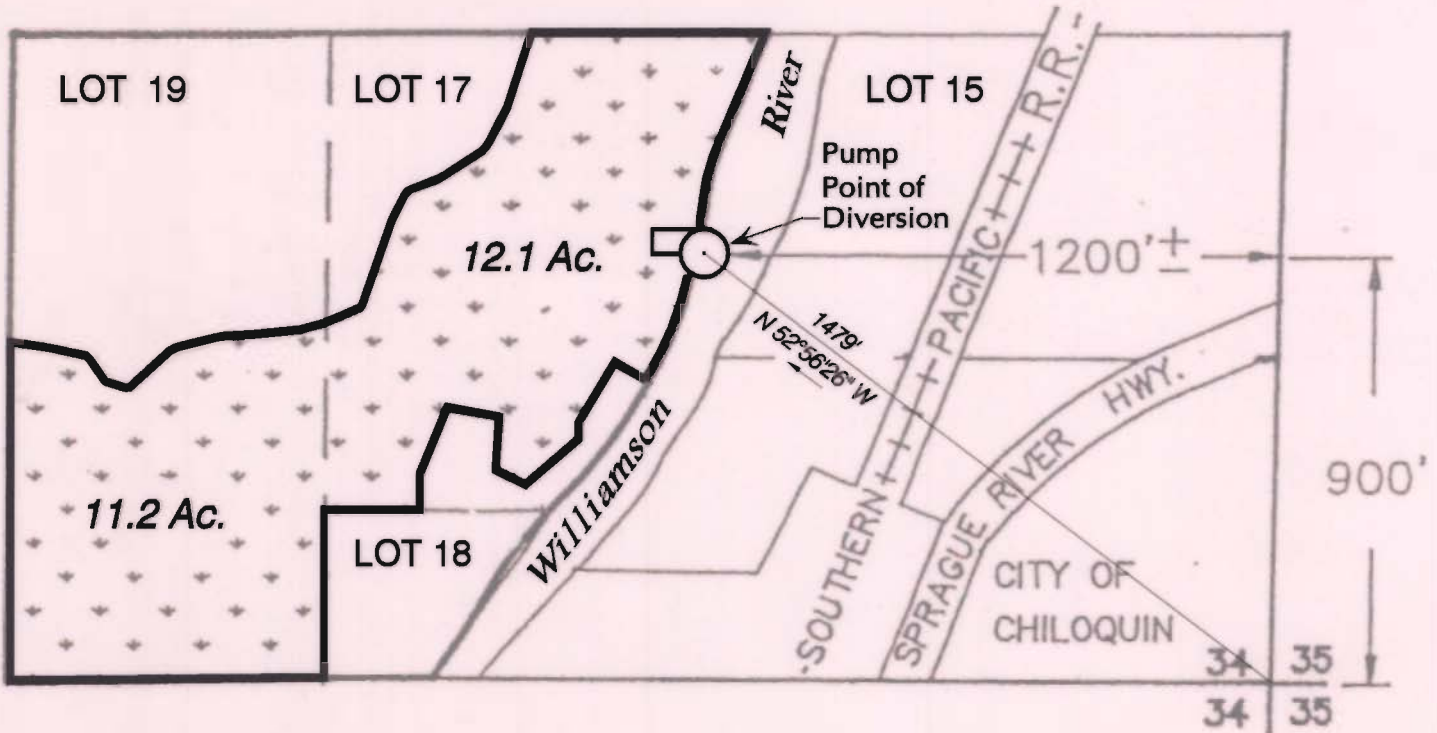


# ROBERT M. & ALICE M. WAMPLER

Located in SW 1/4 NE 1/4, SE 1/4 NE 1/4, Sec. 34, T.34 S., R.07 E., W. M.  
 KLAMATH COUNTY, OREGON



## LEGEND

- Settlement Place of Use
- Diversion Pump

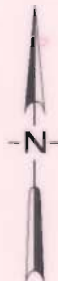
## PLACE OF USE

Lot 17 = 12.1 Acres  
 Lot 19 = 11.2 Acres  
**Total = 23.3 Acres**

## BASE MAP:

Prepared by:  
 ADKINS CONSULTING ENGINEERS INC.

Modified by:  
 HKM ENGINEERING INC.  
 to meet Settlement Map Standards



1 Inch : 400 Feet (approx.)

This map is not intended to provide legal dimensions or locations of property lines.

• HKM Project No. 3M137.222 100 • N:\Klamath\CLAIMS\CLAIM-56\Settlement\Claim56.dwg BJ • October 04, 2004