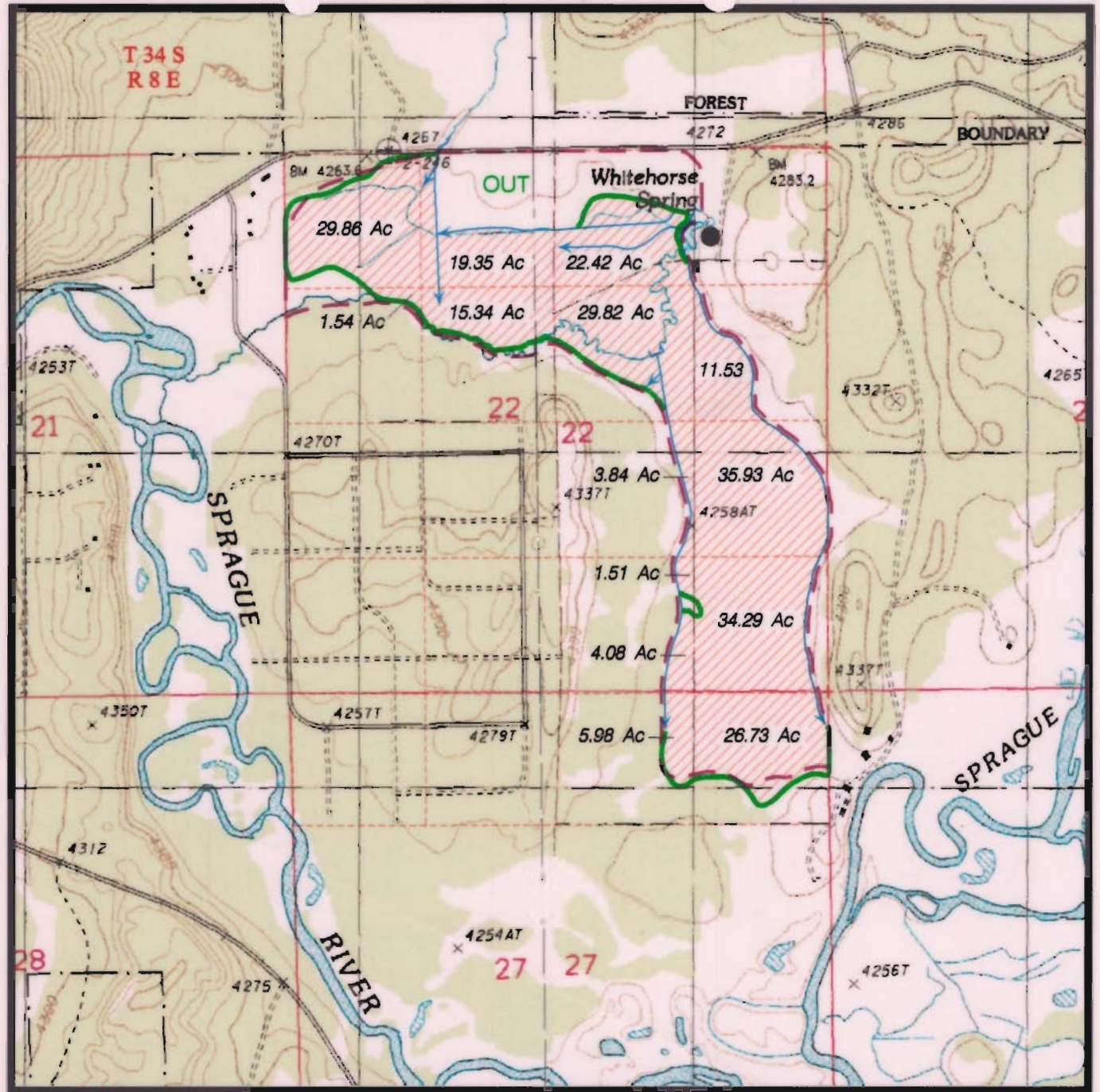

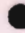

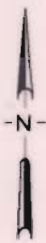


N:\Klamath\CLAIMS\CLAIM-68_1940Acres\Drawings\1055.dwg 12/17/2003 12:23:32 PM MST



LEGEND

-  Irrigated Acreage agreed to for Settlement of Claim No. 68 is 242.22 Acres
-  Domestic Use
-  Ditches



1 Inch : approx. 1500 feet



RECEIVED

JAN 20 2004

WATER RESOURCES DEPT
SALEM, OREGON

HKM Engineering Project No. 3V137.215

December 2003



HKM Engineering Inc.
Granite Tower Building
222 N. 32nd St., Suite 700
P.O. Box 31318
Billings, MT 59107-1318
(406) 656-6399, FAX (406) 656-6398

**KLAMATH CLAIMS
CLAIM NO. 68**
CHILQUIN and S'CHOLIS CANYON 7.5-Min. TOPO QUADS

**FIGURE
1**