

WRD map  
395 BE  
Insert Page 31C  
SW 1/4 Sec 31  
DC 3/24/98

Gov't Lot 2

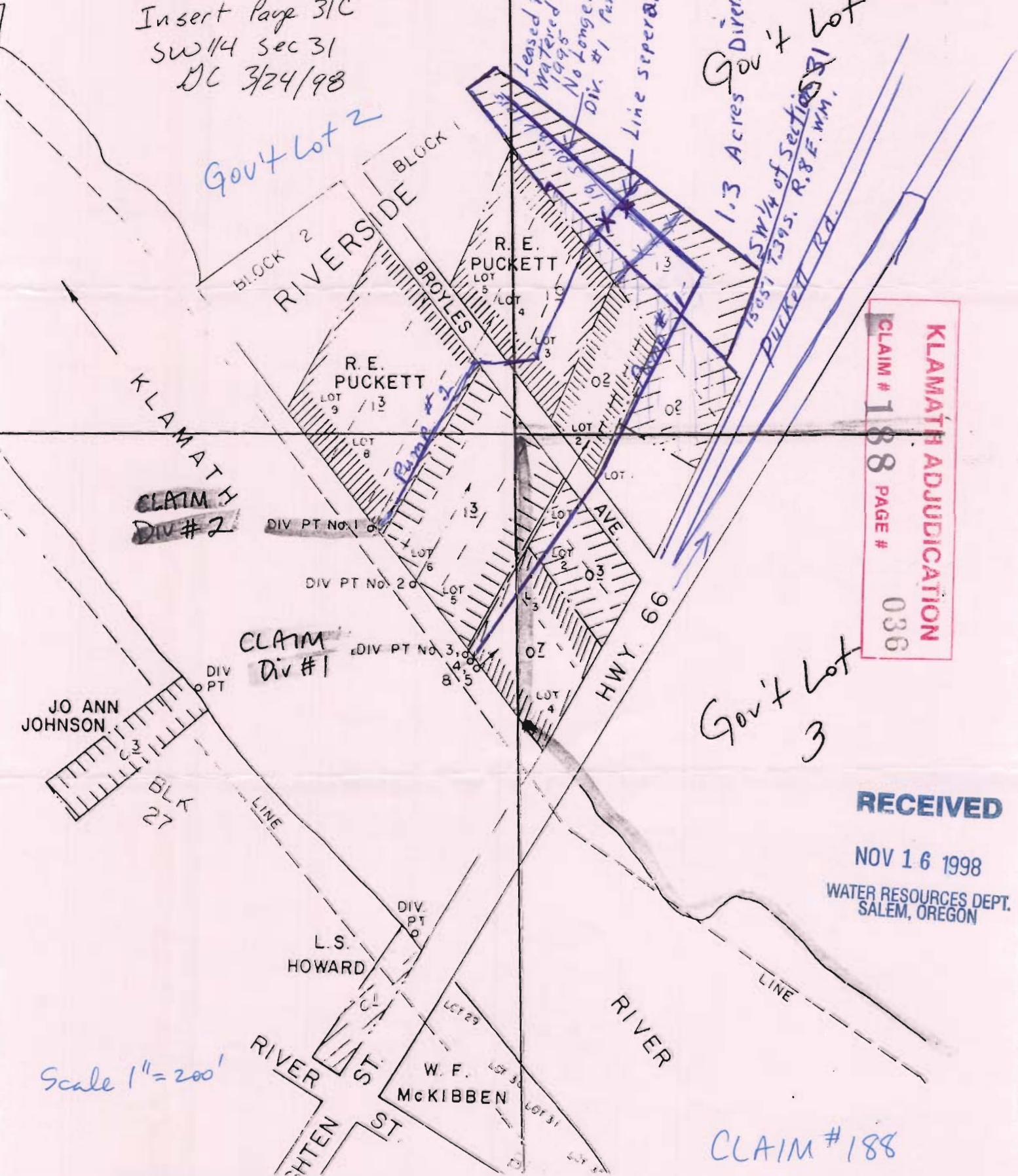
Leased to neighbor who watered from Div #1 until 1995. No longer exists from Div #1 pump #2.

Line separated at this line.

1.3 Acres Diversion #4

Gov't Lot

SW 1/4 of Section 31  
15051 7395. R.8.E.W.M.  
PUCKETT RA.



CLAIM #  
Div #2

CLAIM #  
Div #1

**KLAMATH ADJUDICATION**  
CLAIM # 188 PAGE # 036

Gov't Lot 3

**RECEIVED**

NOV 16 1998

WATER RESOURCES DEPT.  
SALEM, OREGON

Scale 1" = 200'

CLAIM #188