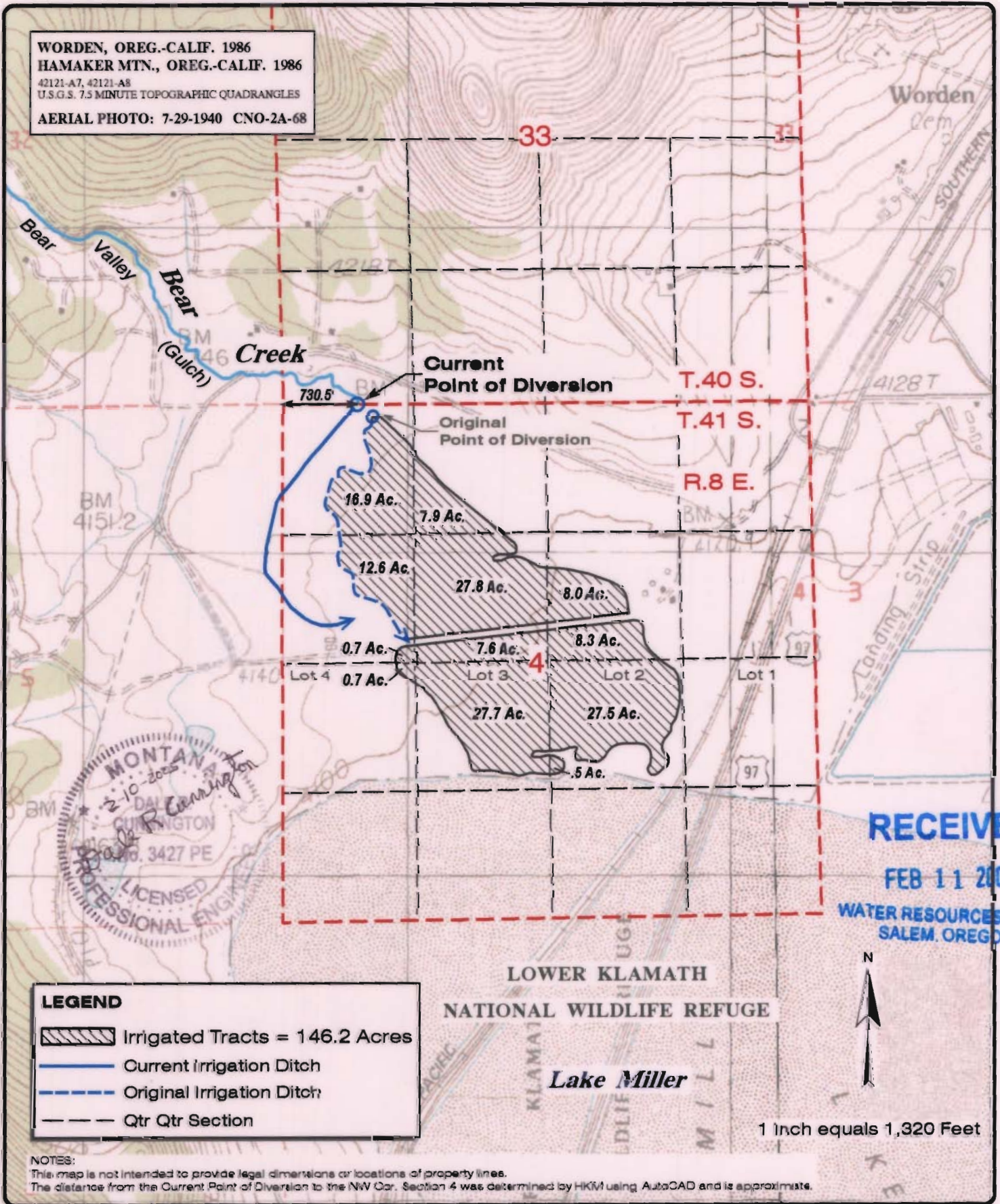
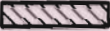





WORDEN, OREG.-CALIF. 1986  
 HAMAKER MTN., OREG.-CALIF. 1986  
 42121-A7, 42121-A8  
 U.S.G.S. 7.5 MINUTE TOPOGRAPHIC QUADRANGLES  
 AERIAL PHOTO: 7-29-1940 CNO-2A-68



**LEGEND**

-  Irrigated Tracts = 146.2 Acres
-  Current Irrigation Ditch
-  Original Irrigation Ditch
-  Qtr Qtr Section

**NOTES:**

This map is not intended to provide legal dimensions or locations of property lines.  
 The distance from the Current Point of Diversion to the NW Cor. Section 4 was determined by HKM using AutoCAD and is approximate.



HKM Engineering Inc.  
 Granite Tower Building  
 222 N. 32nd St., Suite 700  
 P.O. Box 31318  
 Billings, MT 59107-1318  
 (406) 656-6399, FAX (406) 656-6398

Copyright © 2005 HKM Engineering Inc., All Rights Reserved.  
 N:\Klamath\CLAIMS\CLAIM-224\Claim224\_HR1058.mxd  
 01/17/2002 February 14, 2005 BU

**KLAMATH BASIN WATER RIGHTS ADJUDICATION**  
**CLAIM NO. 224 - SETTLEMENT**  
**CLAIMANTS: WINSTON H. & LOUISE PATTERSON,**  
**JAMES C. & MARLYN J. ROSS**