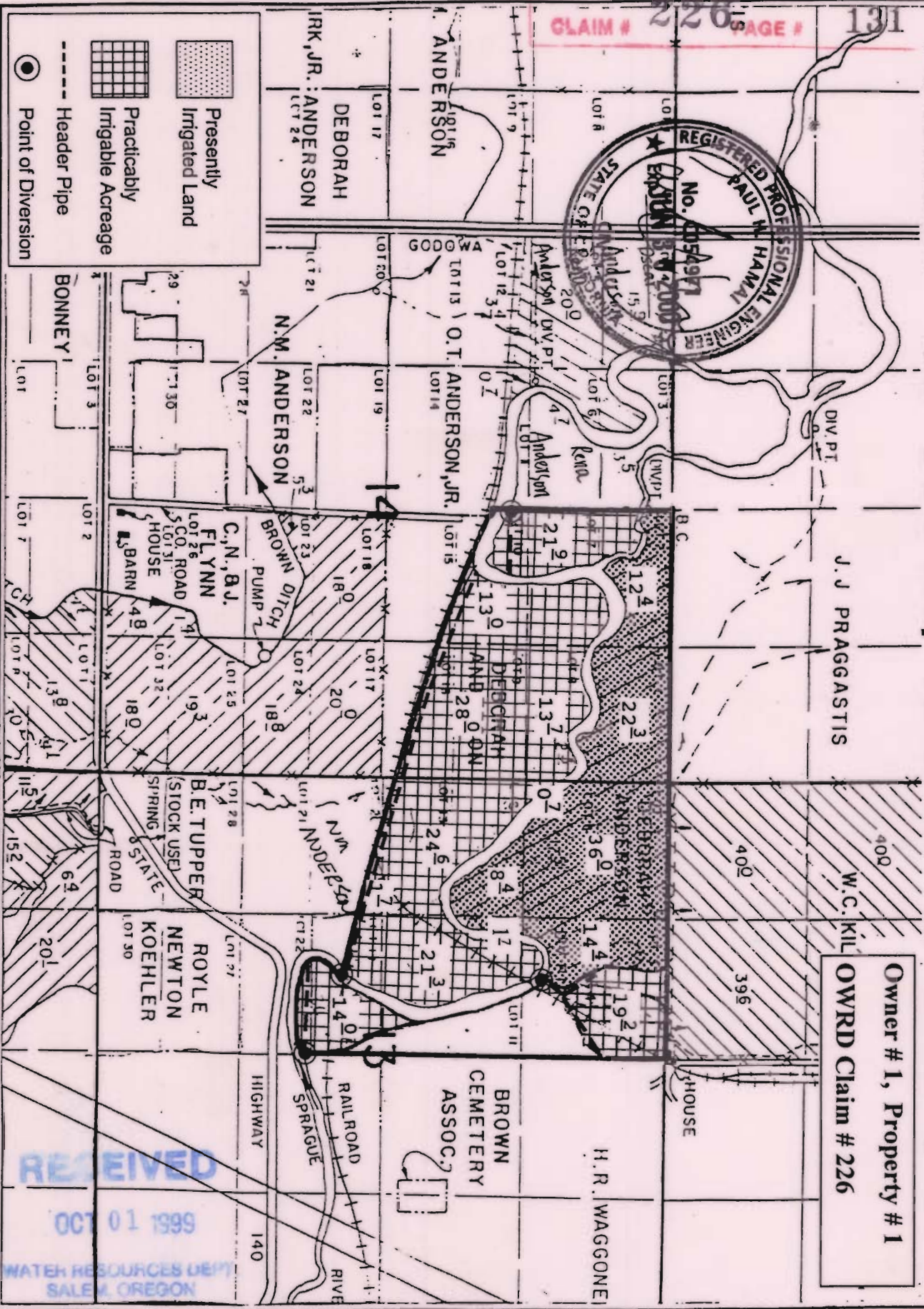


TOWNSHIP 36 SOUTH, RANGE 12 EAST, W. M



Owner # 1, Property # 1
 W.C. KIL
 OWRD Claim # 226

RECEIVED
 OCT 01 1999
 WATER RESOURCES DEPT
 SALEM OREGON

By: Natural Resources Consulting Engineers Inc.
 1250 Addison St., Suite 204
 Berkeley, Ca. 94702
 Berkeley (510)841-7814

